



9
oil/canvas
BELMORE BROWNE

THE FOREST RANGER, 1925
18x24 in./46x61 cm.
\$12,000/15,000

LEVIS

FINE ART AUCTIONS & APPRAISALS

A DIVISION OF ARTBANK INC.

FINE ART AUCTION

– BUYERS PREMIUM 15% UP TO & INCLUDING \$25,000, 10% THEREAFTER –

Including the property from local, national and international private and corporate collections and estates.

SPECIAL PREVIEW

Friday, May 4, 2001, 5:30 to 7:30
with lecture at 6:00

MEDIUM, WELL-DONE OR RARE Painting, Print or Reproduction?

(Artist's materials and their applications)

PREVIEW

Saturday, May 5, 2001, 10 a.m. to 5 p.m.
Sunday, May 6, 2001, 10 a.m. to 1 p.m.

FIRST SESSION LOTS 1-154

Sunday, May 6, 2001 at 1 p.m.

SECOND SESSION LOTS 201-347

Sunday, May, 2001 at 4:30 p.m.
at



ARTSPACE

2nd Level, Crossroads Market
1235 26 Ave S.E., Calgary, Alberta



Some or all of the lots offered are subject to a Reserve bid

For more information contact Doug Levis or Anna Gardner at

Levis Fine Art Auctions & Appraisals:

1711 10 Avenue S.W. #128, Calgary, Alberta T3C 0K1

TEL: (403) 541-9099 FAX: (403) 541-9097

Website www.levisauctions.com or e-mail: mail@levisauctions.com

CATALOGUE \$20 • \$22 BY MAIL (PLUS GST)

ISBN 1203-3081



214 MT. ASSINIBOINE
wood block/paper
BARLEIGH
11x14.75 in./28x37 cm.
\$300/400



4 RAINY DAY, GRAND RIVER, GALT, ONT.
oil/canvas
DONALD BESCO
24x36 in./61x91 cm.
\$2,400/2,800



2 SCENE D'AUTOMNE
oil on particle board
PIERRE BEDARD
14 x 18 in. / 36 x 46 cm.
\$300/400



6 AFTERNOON, EARLY SPRING
oil/canvas board
LORNE BOUCHARD
12x15.75 in./30x40 cm.
\$400/600



8 MOUNTAIN LAKE
watercolour/paper board
FREDERICK HENRY BRIGDEN
12x13.75 in./30x35 cm.
\$800/1,000



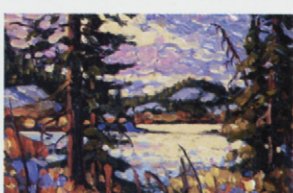
10 KANANASKIS VALLEE; ALBERTA
oil/canvas
SERGE BRUNONI
30x40 in./76x102 cm.
\$2,000/2,500



11 SPRING, 1965, MASHAM, QUE.
oil/panel
LORNE BOUCHARD
10.5x13 in./27x34 cm.
\$700/900



15 VISITOR FROM GREENLAND
pastel/paper
HORACE CHAMPAGNE
18x24 in./46x61 cm.
\$2,000/2,500



16 McCULLOCH CHAIN OF LAKES
oil/particle board
ROD CHARLESWORTH
8x10 in./20x25 cm.
\$300/400



18 RED DEER VALLEY NEAR DRUMHELLER
oil/canvas board
ALAN COLLIER
16x20 in./41x50 cm.
\$1,500/2,000



19 JOFFRE, ALBERTA, 1970
oil/canvas board
ALAN COLLIER
12x16 in./30x41 cm.
\$1,500/2,000



21 BLACK LAB WITH BLUE BILLED DECOY
etching/paper
JACK COWIN
5.25x11.5 in./13x29 cm.
\$300/400



215 TWO FIGURES
monoprint
MAXWELL BATES
11.5x9 in./29x23 cm.
\$900/1,200



227 RUNNING FREE
watercolour
JAMES BLOMFIELD
5.5x4.5 in./14x11 cm.
\$200/300



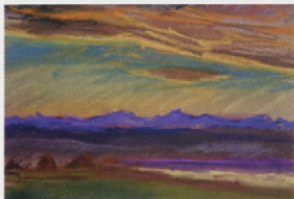
13 THREE AND BLUE LOOP, 1971
silkscreen/paper
JACK BUSH
30x22 in./76x56 cm.
\$1,500/2,000



5 IN THE LABRADOR SEA
etching
DAVID BLACKWOOD
35x24 in./90x60 cm.
\$4,000/5,000



22 VIEW FROM THE FRONT OF U.B.C.
oil/canvas 24x30 in./61x76 cm.
DUNCAN CROCKFORD \$2,000/3,000



26 CERULEAN BLUE
pastel/paper 4.75x6 in./12x15 cm.
ORESTES (RICK) DE GRANDMAISON \$400/500



31.1 GEESE OVER A MARSH
oil/canvas 23x34 in./58x86 cm.
ROLAND GISSING \$3,000/3,500



34 THAMES - BEYOND MARLOW, ENGLAND
oil/canvas board 10x12 in./25x30 cm.
HENRY GEORGE GLYDE \$1,500/1,700



233 BELL
wood block 19.5x13.5 in./50x34 cm.
RICHARD CALVER \$400/500



24 INDIAN CHILD
pastel/paper 13x10 in./33x25 cm.
N. DE GRANDMAISON \$7,000/9,000



31 HARVEST TIME, 1949
oil/canvas 28x40 in./71x102 cm.
ROLAND GISSING \$3,000/5,000



30 GREEN ISLET LIGHT
oil/canvas 20x24 in./50x61 cm.
ROBERT GENN \$900/1,200



28 FARM BUILDINGS
watercolour/paper 10x12 in./25x30 cm.
LEMOINE FITZGERALD \$3,000/3,500



37 TOREADORS
pastel/paper 12.25x10 in./31x25 cm.
ERIC GOLDBERG \$400/600



39 ALBERTA LANDSCAPE
watercolour 21x29 in./53x74 cm. Dated: 1994
COLIN D. GRAHAM \$700/900



41 STILL LIFE WITH ELEPHANT
oil/canvas 29x23.5 in./73x60 cm.
JULES A. GRUN \$2,000/2,500



49 FESTIVAL HEAD
gouache/paper 29x21.25 in./74x54 cm.
JACK HUMPHREY \$1,200/1,500



40 FARM IN WINTER IN ROCKIES
oil/canvas board 10x12 in./25x30 cm.
ELLEN (VAUGHAN) GRAYSON \$500/700



42 WINTER AFTERNOON
oil/particle board 13x16.75 in./33x43 cm.
JOSEPH SYDNEY HALLAM \$1,000/1,200



43 GLACIER FED MOUNTAIN LAKE
watercolour/paper 13x16.5 in./33x42 cm.
REGINALD HARVEY \$500/700



45 INDIANS RUNNING THE RAPIDS
watercolour/paper 13x19.5 in./33x50 cm.
ALFRED WORSLEY HOLDSTOCK \$1,500/2,000



46 LANDSCAPE OF BYGONE DAYS
oil/canvas 22x30 in./56x76 cm. Dated: 1976
GEORGE A. HORWATH \$1,000/1,200



48 IMPERIAL OIL WHARF SKIDGATE
graphite/paper 9x12 in./22x30 cm. Dated: 1953
EDWARD JOHN HUGHES \$2,000/2,500



280 WALRUS
soapstone sculpture 8x18.5x11 in./20x47x28 cm.
MOSES NAKOODEE \$1,250/1,500



51 OLD BOATS AT BATCHEWANA POINT
oil/canvas 10.5x13.5 in./27x34 cm. Dated: 1955
ALEXANDER YOUNG JACKSON \$8,000/10,000



64 AUTUMN REFLECTIONS
oil/paper board 12x18 in./30x46 cm.
AUGUSTUS KENDERDINE \$3,000/4,000



65 CANVAS BACKS
watercolour/paper 14.75x21.5 in./37x55 cm.
ILLINGWORTH KERR \$900/1,200



66 HORSES IN CAMP
oil/canvas 28x38 in./71x97 cm.
JAC KING \$4,000/6,000



67 GREEN TREES [FIREWEED] 1984
watercolour/paper 5.25x7 in./13x18 cm.
DOROTHY KNOWLES \$800/1,000



285 MAN SPIRIT
dark green soapstone sculpture 13x8x7.5 in.
RALPH PORTER 33x20x19 cm.
\$1,000/1,500



56 KUBUKI III
wood block/paper 13.5x9 in./34x23 cm.
TOYOHARA KUNICHKA \$400/500



58 BLUE RAIN
etching/paper 19.25x14 in./49x36 cm.
SHIGEKI KURODA \$300/400



60 WARRIOR AND WOMAN
wood block/paper 13x8.5 in./33x22 cm.
KUNISADA TOYOKUNI III \$500/700

LEVIS

FINE ART AUCTIONS & APPRAISALS

A DIVISION OF ARTBANK INC.

SPECIAL PREVIEW

Friday, May 4, 2001, 5:30 to 7:30
with lecture at 6:00

MEDIUM, WELL-DONE OR RARE Painting, Print or Reproduction?

(Artist's materials and their applications)

PREVIEW

Saturday, May 5, 2001, 10 a.m. to 5 p.m.
Sunday, May 6, 2001, 10 a.m. to 1 p.m.

FIRST SESSION LOTS 1-154

Sunday, May 6, 2001 at 1:00 p.m.

SECOND SESSION LOTS 201-347

Sunday, May 6, 2001 at 4:30 p.m.
at

ARTSPACE

2nd Level, Crossroads Market
1235 26 Ave S.E., Calgary, Alberta

AUCTIONEER'S NOTES

Welcome to Levis Auctions' annual spring sale. We are delighted to be in our new venue, ARTSPACE, on the 2nd level of the new Crossroads Market. After five years at the Victoria Community Association, we had outgrown the space. The ARTSPACE facility provides galleries, artists, and retailers with a place to network and do business. It is destined to become an important part of the landscape in the redevelopment of the Inglewood/Ramsay area, and we are pleased to be here in the hub of the activity.

It has already been a busy year for Levis Auctions. We had the privilege of holding a spectacularly successful auction of contemporary art on January 17th. The results were so encouraging that we are looking at doing another specialized contemporary auction in early 2002. Our thanks go out to all of you across the country who participated in person as well as via absentee bids. We set new records in that area as well! Due to the ever increasing numbers of absentee bids, we now require that all absentee bids be received by noon the day **before** the sale. We believe this change enables us to provide the highest level of service to each and every client. You may already have noticed the new "one day format" of the auction. We hope this arrangement allows more people to participate in the entire auction without the extra effort of going out on 2 consecutive days. We appreciate your support and are interested in your feedback. Let us know how the new format works for you.

Well, back to the matter at hand, Anna Gardner and I are very pleased with the upcoming auction! We have some exciting pieces of art to offer, among them: a stunning portrait by N. de Grandmaison in a great frame, a cheerful Robert Pilot, two very fine A.Y. Jackson oils [from the early 1930's and the mid 50's], and several excellent Morrisseaus. Did we mention the outstanding Belmore Browne? We'll let you be the judges on this old forest ranger. Worth mentioning is a large, painterly seascape by Panabaker and a charming George Pepper painted while traveling in Spain. In addition, we have a selection of Inuit works on paper and in stone, and a number of intriguing Oriental prints. Thanks to all our consignors and buyers, without whom we have no auction. We are looking forward to seeing you at ARTSPACE. Come out for the Special Preview and Doug Levis' talk on artist's materials MEDIUM, WELL DONE OR RARE - Friday at 6:00 p.m.

For more information contact: Doug Levis or Anna Gardner

LEVIS FINE ART AUCTIONS & APPRAISALS

#128, 1711 - 10 Avenue S.W.

Calgary, Alberta T3C 0K1

TEL: (403) 541-9099 FAX: (403) 541-9097

www.levisauctions.com or e-mail: mail@levisauctions.com

G.S.T. R121 033 252

CATALOGUE \$20 • \$22 BY MAIL (PLUS G.S.T.)

ISBN 1203-3081

FIRST SESSION
1:00 P.M.
LOTS 1 - 154

SECOND SESSION
4:30 P.M.
LOTS 201 - 347

STANDARD CONDITIONS OF SALE

1. LEVIS Fine Art Auctions & Appraisals, or LEVIS or "we" refer, for all purposes relating to this auction, to the corporation LEVIS Fine Art Auctions & Appraisals, a Division of Artbank Incorporated.
 2. A Buyer's Premium of 15% up to & including \$25,000, 10% thereafter of the Hammer Price shall be added thereto and is payable by the Purchaser as part of the total purchase price.
 3. Goods and Services Tax of 7% will be charged on the Hammer Price and Buyer's Premium on all lots.
 4. Although LEVIS Fine Art Auctions & Appraisals take care and diligence in their catalogue of the lots offered for auction, all Property is sold "as is" and neither we nor our agents, auctioneers or other personnel nor the Consignor make any warranties or representations as to the correctness of the catalogue or other descriptions contained therein, of the physical condition, size, authenticity, or quality. Prospective bidders should inspect the property before bidding to determine its condition, size and whether the purchaser acquires any reproduction rights in the property.
 5. Notwithstanding the preceding conditions, if within fourteen days of the sale of any lot, the Purchaser can provide us the written opinion of two acknowledged experts that the art, as outlined in the glossary, is in effect mis-described in substantial particular in the catalogue and within fourteen days after such notice the Purchaser returns the lot to us in the same condition as when sold, we as agent for the Consignor will rescind the sale and refund the Purchase Price received by them.
- Due to the time requirements, expense and sometimes changing scholarly opinion of some artist's work, LEVIS cannot guarantee authentication on paintings, drawings, graphic art or sculpture created before 1900.
6. We reserve the right to withdraw any property before the moment of sale.
 7. Unless otherwise announced by the auctioneer, all bids are per lot as numbered in the catalogue.
 8. We reserve the right to reject any bid. The highest bidder acknowledged by the auctioneer will be the purchaser. In the event of a dispute between bidders, or in the event of doubt on the part of us as to the validity of any bid, the auctioneer will have the final discretion either to determine the successful bidder or to reoffer and resell the article in dispute. If any dispute arises after the sale, our sale record is conclusive.
 9. If the auctioneer decides without regard to the printed estimated price that any opening bid is below the value of the lot offered, he may reject the bid and withdraw the lot from the sale, and if, having acknowledged an opening bid, he decides that any advance thereafter is insufficient, he may reject the advance.
 10. On the fall of the auctioneer's hammer or indication of being sold, title to the offered lot will pass to the highest bidder acknowledged by the auctioneer, subject to conditions set forth herein, and such bidder thereupon will pay the full purchase price therefor or such part as we may require. All property must be removed from our premises by the purchaser at their expense not later than one business day following its sale and if is not so removed, a handling charge of 5% of the purchase price per month until removal of the property will be payable by the purchaser.
 11. Payment in full must be made on the day of the sale by cash, certified cheque, travellers cheque, Visa, MasterCard or bank draft, unless other arrangements have been made with the auction house prior to the sale.

GUIDE FOR PROSPECTIVE BUYERS

A Buyer's premium of 15% up to & including \$25,000, 10% thereafter will be added to the hammer price of all Property sold. This premium is payable by all purchasers.

GOODS AND SERVICES TAX

G.S.T. of 7% will be charged on the Hammer Price and on the Buyer's Premium.

RESERVES

A reserve is the confidential minimum price agreed between the seller and the auction house, below which the art work will not ordinarily be sold. We do not accept reserve prices that would exceed the printed estimate. As agents for the consignor, we may place bids during the auction if the current bid is below the reserve on the lot being offered.

ESTIMATES

As a service to our clients, we provide an estimate which in our opinion the lot offered may sell for based upon previous auctions results by the artist or something similar. These are only estimates and are not appraised values. In addition, estimates are worked on well in advance of the publication of the catalogue. Please contact the office on any particular lot. In the case of a lot with a reserve price, we do not allow the reserve to exceed the printed estimate.

INFORMATION FOR CONSIGNORS

We are always looking for good art work to sell at auction. If you have something you think we may be interested in, please give us a call at our offices for a free confidential appointment.

Standard commission rates are as follows:

- 10% for lots selling for \$2,500 or more
- 20% for lots selling for under \$2,500

If there is a reserve price and the lot fails to sell, there is a reserve bid fee of 5% of the reserve price (minimum charge of \$100)

While the consignor is responsible for the reserve fee and shipping to and from the auction, the auction company is responsible for the following:

- advertising
- cataloguing and/or photography expenses
- insurance

REGISTRATION

You should arrive before the auction to register for the auction. You will receive a card to fill out with a number on it, your bidding number. Please ensure that you have established credit references before the auction.

BIDDING

If you are successful on a particular lot, you will be requested to show your bidder number.

ABSENTEE BIDS

If you are unable to attend the auction, you may use the enclosed Absentee Bid form at the end of the auction catalogue. We will act on your behalf to try and purchase the lot(s) of your choice for the lowest possible price up to the top amount you indicate.

PAYMENT

Payment may be made by cash, certified cheque, MasterCard, Visa, or bank draft. Payment must be made in full the day of the auction.

REMOVAL OF PROPERTY

Once payment has been made in full, you may pick up your art work. Art work left with the auction company are left at the purchasers risk and peril.

INFORMATION ON APPRAISALS

Written appraisals can be prepared for insurance, probate, family division or other purposes. Appraisal fees vary according to circumstance so please contact the office regarding particulars. A partial rebate of our fee will be made on appraised property subsequently accepted by us for sale.

CATALOGUE SUBSCRIPTIONS

Catalogue subscriptions receive the highest priority and automatically receive auction results after the auction. Subscription rates are available for one or two year periods. Please contact the office for more information.

**NEXT AUCTION:
NOVEMBER 4, 2001**

GLOSSARY

The following terms are used in the catalogue and description of the artists and lots:

Walter Joseph Phillips – artist

A.S.A., C.S.P.W.C., R.C.A. – associations – see below

[1884-1963] – date of birth and death of artist

Canadian – nationality

see – references for particular artist

While this is the highest category of authenticity and is in our opinion, a work by the artist, it is made without qualifications as to authorship.

PLEASE NOTE: Due to the time requirements, expense and sometimes changing scholarly opinion of some artist's work, LEVIS can not guarantee authentication on paintings, drawings, graphic art or sculpture created before 1900.



– illustrated colour

[b.1952] – date of birth of artist

ca. – circa

fl. – flourished in and around this time period

signed/dated/titled – in our opinion, the work has been signed/dated/titled by the artist unless otherwise noted

signed in plate/block – in our opinion the art work was signed/dated/titled by the artist in the plate before printing

bears signature/date/title – in our opinion the signature/date/title is by a hand other than the artist

verso – on the reverse side

archival mat – front mat is of archival material

archival material throughout – work has been examined out of the frame and in our opinion all framing is of archival material

Denglas – glazed with Denglas material

unframed – all work is framed unless noted as unframed

size – size is always height by width (by depth for sculpture) in inches rounded down to the nearest quarter of an inch and to the nearest whole centimetre

Ref – reference

Prov – provenance – indicates previous owners either by way of labels and/or other information. This is not necessarily an indication of present ownership.

LOT OF ?? – more than one item in lot

ESTIMATE – an estimate of what the art work may sell for but it is only intended as an estimate

The following abbreviations are used for professional associations and societies:

A.A.F. – Alberta Art Foundation/
Alberta Foundation for the Arts

A.C.A. – Alberta College of Art

A.F.A. – Alberta Foundation for the Arts/
Alberta Art Foundation

A.G.G.V. – Art Gallery of Greater Victoria

A.G.O. – Art Gallery of Ontario

A.R.C.A. – Associate Royal Canadian
Academy of Arts (1880)

A.R.E. – Associate Royal Society of
Painter-Etchers and Engravers

A.S.A. – Alberta Society of Artists (1931)

B.C.S.A. – British Columbia Society of Artists

C.G.P. – Canadian Group of Painters (1933-69)

C.P.E. – Society of Canadian Painter-Etchers
and Engravers (1916-76)

C.S.G.A. – Canadian Society of Graphic Art
(1923-76)

C.S.P.W.C. – Canadian Society of Painters in
Water Colours (1925)

Dict. – Dictionary

E.A.G. – Edmonton Art Gallery

F.C.A. – Federation of Canadian Painters (1941)

M.S.A. – Manitoba Society of Artists

N.G.C. – National Gallery of Canada

O.S.A. – Ontario Society of Artists (1872)

P.S.C. – Pastel Society of Canada

R.A. – Royal Academy (1768)

R.B.A. – Royal Society of British Artists

R.C.A. – Royal Canadian Academy of Arts (1880)

R.E. – Royal Society of Painter-Etchers & Engravers

R.S.A. – Royal Scottish Academy

R.M.S. – Royal Miniature Society

S.W.E. – Society of Wood Engravers (1919)

V.A.G. – Vancouver Art Gallery

SUNDAY MAY 6 AT 1:00 P.M.
FIRST SESSION, LOT #1 - 154

PLEASE NOTE

Buyer's Premium: a Premium of 15% up to & including \$25,000, 10% thereafter will be added to the Hammer Price of all property sold. The Premium is payable by all purchasers. Goods and Services Tax: G.S.T. of 7% will be charged on the total of the Hammer Price and on the Buyer's Premium.

Additional notes may be found at the front of the catalogue for prospective buyers.

SCHOOL OF HENRY ALKEN

18/19 century British
 Henry Alken [1774-1850] biography in *Dictionnaire des Peintres, Sculpteurs et Graveurs*, by E.Benezit, Tome.1, pg.104

- 1** UNTITLED — THE HUNT
 oil on canvas
 14 x 20 in. / 36 x 51 cm.
 bears signature lower left; some restorations noted
 ESTIMATE: \$1,200/1,500



PIERRE BEDARD

[b.1960] Canadian
 biography and another example in *Magazin Art Biennial Guide 1998-1999*, pg.215, pub. Editart International

- 2** SCENE D'AUTOMNE
 oil on particle board
 14 x 18 in. / 36 x 46 cm.
 signed lower left; signed and titled verso
 ESTIMATE: 300/400

- 3** DOUCE HIVER JOURNEE
 oil on particle board
 14 x 18 in. / 36 x 46 cm. Dated: 1996
 signed lower right; signed, titled and dated verso
 ESTIMATE: 300/400

DONALD BESCO
 20th century Canadian

- 4** RAINY DAY, GRAND RIVER, GALT, ONT.
 oil on canvas
 24 x 36 in. / 61 x 91 cm.
 signed lower left; titled verso
 ESTIMATE: 2,400/2,800

DAVID LLOYD BLACKWOOD

[b.1941] Canadian
 CPE, CSPWC, OSA, RCA
 see *David Blackwood Prints 1962-1984*, by P.Grattan, Art Gallery, Memorial University of Newfoundland; *The Art of David Blackwood*, by W.Gough, McGraw Hill Ryserson, 1988; biography and other examples in *N.G.C. Vol.1, A-F*, ed.C.Hill, pg.96; represented by Gallery One, Toronto, Heffel Gallery, Vancouver and New Zones Gallery, Calgary

- 5** WESLEYVILLE FLEET IN THE LABRADOR SEA #73/75
 colour etching on paper
 35.25 x 23.75 in. / 90 x 60 cm. Dated: 1995
 signed, titled, dated and numbered along bottom;
 archival mat
 Prov: West End Gallery, Edmonton, label verso
 ESTIMATE: 4,000/5,000

GEORGE LORNE HOLLAND BOUCHARD

[1913-1978] Canadian
 RCA
 see *N.G.C. Vol.1, A-F*, ed.C.Hill, pg.117; biography in *Dict. of Canadian Artists*, by C.MacDonald, Vol.1, pg.65; exhibition list; *R.C.A.A.*, pg.41 and *M.M.F.A.* by E.McMann, pg.39; see biography in www.lochmayberry.com

- 6** AFTERNOON, EARLY SPRING, HUBENDEAU P.QUE.
 oil on canvas board
 12 x 15.75 in. / 30 x 40 cm.
 signed lower right, titled verso; some surface dirt noted
 Prov: ex-collection R.A. Brown;
 Gainsborough Gallery, Calgary, label verso
 ESTIMATE: 400/600

- 7** STREAM NEAR LAC BEAUPORT, P.QUE.
 oil on canvas board
 12 x 16 in. / 30 x 41 cm.
 signed lower left, signed and titled verso;
 some surface dirt noted
 Prov: ex-collection R.A. Brown;
 Gainsborough Gallery, Calgary, label verso
 ESTIMATE: 400/600

FREDERICK HENRY BRIGDEN

[1871-1956] Canadian
CSPWC, OSA, RCA

see biography and other examples in *A.G.O.*, by the A.G.O., pg.42; see *N.G.C. Vol.1, A-F*, ed.C.Hill, pg.132; founding member of the C.S.P.W.C.; *Dict. of Canadian Artists*, by C.MacDonald, Vol.1 pg.85; *R.C.A.A.*, by E.McMann, pg.44

**8** UNTITLED — MOUNTAIN LAKE

watercolour on paper board

12 x 13.75 in. / 30 x 35 cm.

signed lower left; some foxing upper centre; unframed

ESTIMATE: 800/1,000

BELMORE BROWNE

[1880-1954] American
ANA; ASA

see *The Mountains and the Sky*, by L.Render, pg.171, Glenbow Museum, 1974 for the Glenbow's numerous holdings of this artist; author of *The Conquest of Mt. McKinley* in 1913; photograph of the artist in *Pete n' Catharine, Their Story*, by J.Whyte, pg.29, Whyte Foundation, 1980; biography in *Dict. of American Painters*, by M.Fielding, pg.46

**9** THE FOREST RANGER

oil on canvas

18 x 24 in. / 46 x 61 cm. Dated: 1925

signed lower right; some minor cracks in sky;

in painted period frame

Prov: purchased from William MacBeth Inc. NY;

by descent to private collection, Ontario

ESTIMATE: 12,000/15,000

SERGE BRUNONI

[b.1938] Canadian

biography in *Guide Vallee, III Edition*, by F.Vallee, pg.262, pub. Le Guide Vallee, 1992

**10** KANANASKIS VALLEE; ALBERTA

oil on canvas

30 x 40 in. / 76 x 102 cm.

signed lower right; signed and titled verso

ESTIMATE: 2,000/2,500

RALPH W. BURTON

[1905-1983] Canadian

biography *Dict. of Canadian Artists*, by C.MacDonald, Vol.1 pg.107

**11** SPRING, 1965, MASHAM, QUE.

oil on panel

10.5 x 13.25 in. / 27 x 34 cm. Dated: 1965

signed lower right; signed, titled and inscribed verso

Prov: D&E Lake Fine Arts, Toronto, label verso

ESTIMATE: 700/900

JOHN [JACK] HAMILTON BUSH

[1909-1977] Canadian

CGP, CSGA, CSPWC, ARCA

see *The Heritage of Jack Bush, a Tribute*, by K.Carpenter, Robert McLaughlin Gallery, 1971; *Jack Bush*, ed. K.Wilkin, McClelland and Stewart, 1984; *Jack Bush Serigraph*; pub. Woltjen/Udell Gallery; biography and another example in *A.G.O.*, by the A.G.O., pg.52; *1975-76 The Canadian Canvas*, by Time Canada Ltd., 1975; exhibition list in *R.C.A.A.*, by E.McMann, pg.59

12**12** STRIPES TO THE RIGHT #100/100

colour silkscreen on paper

25.5 x 20 in. / 65 x 51 cm. Dated: 1965

signed, dated and numbered lower right

Ref: catalogue #4 in *Jack Bush Serigraph*;

from Suite of Five in edition of 100

published by the David Mirvish Gallery, Toronto

ESTIMATE: 1,500/2,000

**13****13** THREE AND BLUE LOOP #13/100

colour silkscreen on paper

30 x 22 in. / 76 x 56 cm. Dated: 1971

signed, dated and numbered lower right

Ref: catalogue #12 in *Jack Bush Serigraph*;

from Suite of Five in edition of 100 published by

Waddington Graphics, London, England

ESTIMATE: 1,500/2,000

GERARD CASTONGUAY

[b.1933] Canadian
 biography and another example in *Guide
 Vallee, III Edition*, by F.Vallee, pg.296

- 14** EMPRISE DE L'ETE
 oil on paper
 12 x 24 in. / 30 x 61 cm.
 signed lower right; bears title on label verso; archival mat
 Prov: Collector's Gallery, Calgary, label verso
 ESTIMATE: 800/1,000

**HORACE CHAMPAGNE**

[b.1937] Canadian
 PSC
 see *Dict. of Canadian Artists — Vol.1*, by
 C.MacDonald, pg. addendum for biography;
Guide Vallee, III Edition, by F.Vallee, pg.301,
 pub. Le Guide Vallee, 1992

- 15** A 10,000 YEAR OLD VISITOR FROM GREENLAND
 pastel on paper
 18 x 24 in. / 46 x 61 cm. Dated: 2000
 signed and dated lower right; signed, titled and dated
 on artist's label verso; glazed with Denglas
 ESTIMATE: 2,000/2,500

ROD CHARLESWORTH

[b.1955] Canadian
 biography and another example in *Magazin
 Art 1998-1999*, pg.254; represented by Wallace
 Galleries, Alicit Gallery, Harrison Galleries,
 Loch Mayberry Fine Art, Bugera/Kmet
 Galleries, and Canada House

- 16** McCULLOCH CHAIN OF LAKES
 oil on particle board
 8 x 10 in. / 20 x 25 cm.
 signed lower left; signed and titled verso
 ESTIMATE: 300/400

- 17** DISTANT STRAIT [WEST COAST]
 oil on particle board
 8 x 10 in. / 20 x 25 cm.
 signed lower left; signed and titled verso
 ESTIMATE: 300/400

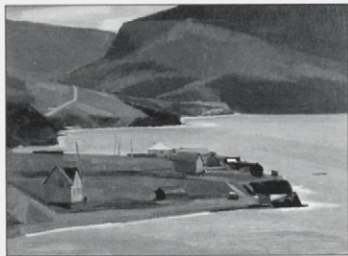
ALAN CASWELL COLLIER

[1911-1990] Canadian
 OSA, RCA
 see *Alan Caswell Collier, Of Man and Nature*,
 by Doren Martin, Ottawa Art Gallery, 1998; the
 R.C.A. presented an exhibition and catalogue
 of Alan's work *An Artist's Journey — Alan
 Collier, R.C.A.* in 1991; *N.G.C. Vol.1, A-F*, ed.C.Hill,
 pg.200 for paintings in the N.G.C.; *Dict. of
 Canadian Artists*, by C.MacDonald, Vol.1 pg.135

- 18** RED DEER VALLEY NEAR DRUMHELLER
 oil on canvas board
 16 x 19.75 in. / 41 x 50 cm. Dated: 1976 ca.
 signed lower right;
 signed, titled and artist's number 'G93-118' verso
 Prov: Kensington Art Gallery Calgary, number verso;
 private collection Edmonton
 ESTIMATE: 1,500/2,000

- 19** JOFFRE, ALBERTA
 oil on canvas board
 12 x 16 in. / 30 x 41 cm. Dated: 1970
 signed lower right; signed, titled, dated
 and inscribed with artist's number 'F5-78' verso
 ESTIMATE: 1,500/2,000

- 20** McIVERS, BAY OF ISLANDS, NEWFOUNDLAND
 oil on paper board
 12 x 16 in. / 30 x 41 cm. Dated: 1970 ca.
 signed lower right;
 signed, titled and artist's number 'E116-94' verso
 Prov: Kensington Art Gallery, Calgary, label verso;
 private collection, Edmonton
 ESTIMATE: 1,000/1,200



JACK LEE COWIN

[b.1947] Canadian

see *Country Pleasures, The Angling Art of Jack Cowin*, by A. Oko, Fifth House, 1984 and *N.G.C. Vol.1, A-F*, ed.C.Hill, pg.222; biography in *Biographical Dict. of Saskatchewan Artists — Men*, by M.Newman, pg.55, Fifth House Pub., 1994; represented by Susan Whitney Gallery, Regina, Masters Gallery, Calgary

21

UNTITLED — BLACK LAB WITH BLUE BILLED DECOY #AP
colour etching on paper
5.25 x 11.5 in. / 13 x 29 cm. Dated: 2000
signed, dated and numbered along bottom
ESTIMATE: 300/400

DUNCAN MACKINNON CROCKFORD

[1920-1991] Canadian

artist listed on C.H.I.N. web site

www.chin.gc.ca/Resources/e_resources

22

VIEW FROM THE FRONT OF U.B.C. VANCOUVER
oil on canvas
24 x 30 in. / 61 x 76 cm. Dated: 1962
signed and dated lower right; titled verso
Prov: purchased from the artist; private collection, Calgary
ESTIMATE: 2,000/3,000

NICHOLAS DE GRANDMAISON

[1892-1978] Canadian

ASA, ARCA

see *History in Their Blood; Indian Portraits of Nicholas de Grandmaison*, by H.Dempsey, Douglas and McIntyre, 1982 for many other examples; *Dict. of Canadian Artists*, by C.MacDonald, Vol.2 pg.305 for biography

23

TURNING ROBE
pastel on paper
27 x 21 in. / 69 x 53 cm.
signed lower right; bears note about subject verso;
in ornate period frame
Ref: This portrait is of a Blackfoot Indian from the Gleichen, Alberta, Indian Reservation. His name is Turning Robe and he was approximately 65 years of age when the portrait was made. The ornaments on his braids are special shells from the Gulf of Mexico and have been handed down for generations as family jewellery or a talisman.
Prov: ex-collection R.A. Brown
ESTIMATE: 9,000/12,000

24

UNTITLED — INDIAN CHILD
pastel on paper
13 x 10 in. / 33 x 25 cm.
signed lower right; in period frame
Prov: purchased from the artist and by descent
ESTIMATE: 7,000/9,000

ORESTES [RICK] DE GRANDMAISON

[1932-1985] Canadian

see *Spaces and Places — Eight Decades of Landscape Painting in Alberta*, by J.Ironside, pg.122 and *Dict. of Canadian Artists*, by C.MacDonald, Vol.2 pg.306 for biography; *Shell Canada Collection*, by B.Shammas, pg.20, Shell Canada, Calgary, 1977

25

UNTITLED — ROAD THROUGH THE FOREST
oil on canvas board
10 x 12 in. / 25 x 30 cm. Dated: 1956
signed and dated lower right; bears title on frame verso
Prov: private collection, Victoria
ESTIMATE: 500/700

26

UNTITLED — CERULEAN BLUE
pastel on paper
4.75 x 6 in. / 12 x 15 cm.
unsigned; archival mat
ESTIMATE: 400/500

27

UNTITLED — THE OLD CABIN — AUTUMN
pastel on paper
5.5 x 7 in. / 14 x 18 cm.
unsigned; archival mat
ESTIMATE: 400/500

**LIONEL LEMOINE FITZGERALD**

[1890-1956] Canadian

CGP, MSA

see *Lionel LeMoine FitzGerald — the Development of an Artist*, by P.Bovey and A.Davis, Winnipeg Art Gallery, 1978; *FitzGerald as Printmaker*, by H.Coy, U. of Man. Press, 1982; *N.G.C. Vol.1, A-F*, ed.C.Hill, pg.328; *A.G.O.*, by the A.G.O., pg.111; *Vistas of Promise, Manitoba 1874-1919*, by V.Berry, W.A.G., 1987; exhibition list *R.C.A.A.*, by E.McMann, pg.125; first exhibited with the Group of Seven in 1930; *Robson*, pg.185; *Colgate*, pg.179

28

FARM BUILDINGS #2278
watercolour on paper
10 x 12 in. / 25 x 30 cm.
signed with initials lower right; glazed with Denglas;
certification from Douglas M. Duncan estate verso
Prov: Canadian Fine Arts, Toronto, label verso
ESTIMATE: 3,000/3,500

ROBERT FORD GAGEN

[1847-1926] Canadian
CSFWC, OSA, RCA

see *E.P.E.C.*, by R.Harper, pg.123; *N.G.C. Vol.2, G-K*, by C.Hill, pg.3; *R.C.A.A.*, by E.McMann, pg.140; *Dict. of Canadian Artists*, by C.MacDonald, Vol.2 pg.242 for biography; included in *From Ocean to Ocean: Nineteenth Century Water Colour Painting in Canada*, by J.Adamson, pg.5, A.G.O., 1978

2
9 UNTITLED — ROAD ON ROCKY COAST

watercolour on paper
9.25 x 13 in. / 23 x 33 cm.
signed lower right
Prov: Collector's Gallery, Calgary, label verso
ESTIMATE: 700/90

**ROBERT GENN**

[b.1936] Canadian

see *Robert Genn: In Praise of Painting*, by R.Genn, Merritt Publishing, 1981; biography in *Dict. of Canadian Artists*, by C.MacDonald, Vol.2 addendum; see *Shell Canada Collection*, by B.Shammas, pg.18, Shell Canada, Calgary, 1977

3
0 GREEN ISLET LIGHT

oil on canvas
19.75 x 24 in. / 50 x 61 cm.
signed lower right; signed and titled verso;
some surface dirt noticed
Prov: private collection, Calgary
ESTIMATE: 900/1,200

**ROLAND GISSING**

[1895-1967] Canadian
ASA

see *Roland Gissing, The People's Painter*, by M.Foran, University of Calgary Press, 1988 for many examples of the artist's work; *Dict. of Canadian Artist's*, by C.MacDonald, Vol.2 pg.278 for biography; included in *The Alberta Society of Artists: Sixty Years*, by M.Joslin, E.A.G., 1992; *Colgate*, pg.184; included in *Jubilee Exhibition of Alberta Paintings*, by J.Nicoll, Calgary Allied Art Centre, 1955

3
1 HARVEST TIME

oil on canvas
28 x 40 in. / 71 x 102 cm. Dated: 1949
signed lower right; signed, titled and dated
on artist's label verso; some surface dirt noted
Prov: ex-collection R.A. Brown
ESTIMATE: 3,000/5,000



3
1 UNTITLED — GEESE OVER A MARSH

oil on canvas
23 x 34 in. / 58 x 86 cm.
signed lower right
ESTIMATE: 3,000/3,500



3
2 HARVEST NEAR COCHRANE

oil on particle board
20 x 24 in. / 51 x 61 cm.
signed lower right; titled on artist's label verso
ESTIMATE: 2,000/2,500



3
3 WATERTON LAKE

oil on particle board
12 x 16 in. / 30 x 41 cm.
signed lower right; titled on label verso
Prov: private collection, Lethbridge
ESTIMATE: 1,200/1,500

HENRY GEORGE GLYDE

[1906-1998] Canadian
ASA, CSGA, FCA, RCA

see *A Lifelong Journey, The Art and Teaching of H.G. Glyde*, by P.Ainslie, Glenbow Museum, 1987; *N.G.C. Vol.2, G-K*, ed.C.Hill, pg.35; *Founders of the A.C.A.*, by V.Greenfield, pg.82; *Dict. of Canadian Artists*, by C.MacDonald, Vol.2 pg.283 for biography

3
4

THAMES — BEYOND MARLOW, ENGLAND

oil on canvas board

10 x 12 in. / 25 x 30 cm. Dated: 1958

signed and dated lower left; signed, titled and dated verso

Prov: Wallack, Ottawa, label verso

ESTIMATE: 1,500/1,700

3
5

UNTITLED — HOUSES ON THE HILL

watercolour on paper

10.5 x 14.5 in. / 27 x 37 cm. Dated: 1986

signed and dated lower right; archival mat

ESTIMATE: 1,000/1,200

3
6

SWANSON CHANNEL, GULF ISLANDS

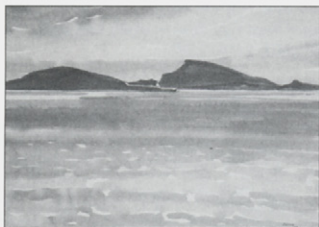
watercolour on paper

10.5 x 14.5 in. / 27 x 37 cm. Dated: 1989

signed and dated lower right; bears title on paper verso;

archival mat; glazed with Denglas

ESTIMATE: 1,000/1,200

**ERIC GOLDBERG**

[1890-1969] Canadian
FCA

biography and other examples in *N.G.C. Vol.2, G-K*, ed.P.Landry, pg.40; biography and other examples in *Jewish Painters and Modernity, Montreal 1930-1945*, by E.Trepanier, pg.137, Centre Saidye-Bronfman, 1987; biography in *Dict. of Canadian Artists*, by C.MacDonald, Vol.2, pg.287; exhibition list in *M.M.F.A.*, by E.McMann, pg.147

3
7

UNTITLED — TOREADORS

pastel on paper

12.25 x 10 in. / 31 x 25 cm.

signed lower left; archival mat

Prov: private collection, Montreal

ESTIMATE: 400/600

JOHN HOWARD GOULD

[b.1929] Canadian
RCA

biography and other examples in *N.G.C. Vol.2, G-K*, ed.C.Hill, pg.52; exhibition list in *R.C.A.A.* pg. 153 and *M.M.F.A.*, pg 150, by E.McMann; biography in *Dict. of Canadian Artists*, by C.MacDonald, Vol.2 pg.301

3
8

UNTITLED — PORTRAIT OF YOUNG GIRL

graphite on paper

10.75 x 9 in. / 27 x 23 cm.

signed lower right; glazed with Denglas

Prov: Master's Gallery, Calgary, label verso

ESTIMATE: 700/900

**COLIN D. GRAHAM**

[b.1915] Canadian
RCA

see *Art in Victoria 1960/1986*, by N.Tuele, A.G.G.V. for biography and another example of the artist's work

3
9

ALBERTA LANDSCAPE

watercolour on paper

21 x 29 in. / 53 x 74 cm. Dated: 1994

signed and dated lower right; bears title on backing;

archival mat

ESTIMATE: 700/900

ELLEN [VAUGHAN] KIRK GRAYSON[b.1894] Canadian
CPE

the artist lived in the Okanagan and taught at the U.B.C. as well as Saskatchewan University summer school and the Banff School of Fine Arts; her married name was 'Mrs. Mann'; biography in *Dict. of Canadian Artists*, by C.MacDonald, Vol.2 pg.311; artist listed on C.H.I.N. web site
www.chin.gc.ca/Resources/e_resources

40
**FARM IN WINTER IN ROCKIES [NEAR TAFT]**

oil on canvas board

10 x 12 in. / 25 x 30 cm.

signed lower right; titled verso

Prov: Petley Jones Gallery, Vancouver, label verso

ESTIMATE: 500/700

JULES ALEXANDER GRUN

[1868-1934] French

biography in *Dictionnaire des Peintres, Sculpteurs et Graveurs*, by E.Benezit, Tome.4, pg.458

41
**UNTITLED — STILL LIFE WITH ELEPHANT**

oil on canvas

28.75 x 23.5 in. / 73 x 60 cm.

signed lower left

ESTIMATE: 2,000/2,500

JOSEPH SYDNEY HALLAM

[1899-1953] Canadian

CSPWC, OSA, RCA

biography and other examples in *N.G.C. Vol.2, G-K*, ed.C.Hill, pg.78; *A.G.O.*, by the A.G.O., pg.152; exhibition list in *R.C.A.A.* pg.167 and *M.M.F.A.*, pg 158, by E.McMann

42
**WINTER AFTERNOON**

oil on particle board

13 x 16.75 in. / 33 x 43 cm.

signed lower right; signed and titled verso;
some surface dirt noted

Prov: private collection, Edmonton

ESTIMATE: 1,000/1,200

REGINALD LLEWELLYN HARVEY[1888-1973] Canadian
ASA

see *Dict. of Canadian Artists*, by C.MacDonald, Vol.2 pg.387 for biography; artist was founding member of the A.S.A. and included in the first A.S.A. show in 1931, see *Spaces & Places — Eight Decades of Landscape Painting in Alberta*, by J.Ironside, pg.13; included in *Jubilee Exhibition of Alberta Paintings*, by J.Nicoll, Calgary Allied Art Centre, 1955

43
**UNTITLED — GLACIER FED MOUNTAIN LAKE**

watercolour on paper

13 x 16.5 in. / 33 x 42 cm.

signed lower right; archival mat

Prov: Collector's Gallery, Calgary, label verso

ESTIMATE: 500/700

JAMES HOCH

[1827-1878] Canadian

OSA

see *E.P.E.C.*, by R.Harper, pg.159 for biography, founding member of the O.S.A.; biography in *A.G.O.*, by the A.G.O., pg.173 and included in *The Ontario Collection*, pg.42

44**UNTITLED — LOG BRIDGE WITH SHEEP ON HILLSIDE**

watercolour on paper

6.75 x 9.5 in. / 17 x 24 cm.

signed lower right

ESTIMATE: 700/900

**ALFRED WORSLEY HOLDSTOCK**

[1820-1901] Canadian

biography in *E.P.E.C.*, by R.Harper, pg.160 and biography and another example in *A.G.O.*, by the A.G.O., pg.175; numerous examples in *W.H. Cloverdale Collection of Canadiana*, pg.117 cat.#275-284

45
**UNTITLED — INDIANS RUNNING THE RAPIDS**

watercolour on paper

13 x 19.5 in. / 33 x 50 cm.

signed lower right

ESTIMATE: 1,500/2,000

GEORGE A. HORVATH

[b.1933] Canadian
 biography in *Shell Canada Collection*,
 by B.Shammas, pg.23

4


LANDSCAPE OF BYGONE DAYS

oil on canvas
 22 x 30 in. / 56 x 76 cm. Dated: 1976
 signed and dated lower left
 Prov: Gainsborough Galleries, Calgary,
 label verso; private collection, Lethbridge
 ESTIMATE: 1,000/1,200

4
7

UNTITLED — WOODLAND RIVER

oil on canvas
 18 x 24 in. / 46 x 61 cm.
 signed lower left
 Prov: private collection, Lethbridge
 ESTIMATE: 1,000/1,200

EDWARD JOHN HUGHES

[b.1913] Canadian
 RCA

see *E.J. Hughes 1931-1982. A Retrospective Exhibition*, by J.Young, Surrey Art Gallery, 1983; *E.J. Hughes: The Vast and Beautiful Interior*, by L.Dawn, Kamloops Art Gallery, 1994; biography and another example in *N.G.C. Vol.2, G-K*, by C.Hill, pg.155; *Dict. of Canadian Artists*, by C.MacDonald, Vol.2 pg.481 for biography; *R.C.A.A.*, by E.McMann, pg.198; *Images of the Land, 1919-1945*, by P.Ainslie, pg.97; *Printmaking in B.C. 1883-1983*, by N.Tuehl, A.G.G.V.; *Benezit*, Tome 5, pg.657

4
8


IMPERIAL OIL WHARF SKIDEGATE, Q.C. ISLAND

graphite on paper
 8.75 x 11.75 in. / 22 x 30 cm. Dated: 1953
 signed and dated left; titled lower right;
 inscribed with various colour notations
 Prov: private collection, Montreal
 ESTIMATE: 2,000/2,500

JACK WELDON HUMPHREY

[1909-1967] Canadian
 CGP, CSGA, CSPWC

see biography and another example in *N.G.C. Vol.2*, by C.Hill, 158 and *A.G.O.*, by the A.G.O., pg.119; exhibition lists in *R.C.A.A.*, pg.198 and *M.M.F.A.*, by E.McMann, pg.184; biography in *Dict. of Canadian Artists*, by C.MacDonald, Vol.2 pg.485

4
9


FESTIVAL HEAD

gouache on paper
 29 x 21.25 in. / 74 x 54 cm.
 signed lower right; archival mat
 Prov: Master's Gallery, Calgary
 ESTIMATE: 1,200/1,500

ALEXANDER YOUNG JACKSON

[1882-1974] Canadian
 CGP, OSA, RCA

see *A.Y. Jackson Paintings 1902-1953*, by A.Lismer, A.G.O., 1953; *A Painter's Country — the Autobiography of A.Y.Jackson*, Clarke, Irwin & Company, 1958; *A.Y.'S Canada, Drawings by A.Y. Jackson* ed. Naomi Jackson Groves, Clarke, Irwin and Company, 1968; *Alberta Rhythm*, by D.Reid, A.G.O., 1982; *Works by A.Y. Jackson from the 1930's*, by N.Groves, Carleton U., 1990; *The Other A.Y. Jackson*, by O.Firestone, McClelland and Stewart, 1979; *N.G.C. Vol.2, G-K*, ed.C.Hill, pg.177; *A.G.O.*, by the A.G.O., pg.205; *R.C.A.A.*, pg.204 and *M.M.F.A.*, pg.189 by E.McMann

5
0


ST. LAWRENCE NORTH SHORE, VILLAGE IN SPRING

oil on panel
 8.5 x 10.5 in. / 22 x 27 cm. Dated: 1935 ca.
 signed lower left; bears title on label verso; some cracking noted; restoration note from Mat Petley Jones, Vancouver included with lot; the original panel probably had paintings on either side and was split in two at some point Ref: see comparable painting 'The Bic Road' #6961 from 1935 in the National Gallery of Canada collection; the artist traveled across the South Shore of the St. Lawrence in the region of St. Fabien and Rimouski Country with Albert Cloutier in March of 1935; several sketches from this time period are also in the collection of the McMichael Canadian Collection.
 Prov: Walter Klinkoff Gallery, Montreal, label verso; private collection, Calgary; one half of the proceeds will be donated to the *Bee Fowlow Lectureship in Medical Genetics*, Faculty of Medicine, University of Calgary
 ESTIMATE: 15,000/20,000

5
1


OLD BOATS AT BATCHEWANA POINT

oil on panel
 10.5 x 13.5 in. / 27 x 34 cm. Dated: 1955
 signed lower right; signed, titled and dated verso;
 bears 'NJG 2432' verso
 Ref: 1955 was the year A.Y. Jackson moved from the Studio Building in Toronto after more than 40 years and settled in Manotick, outside of Ottawa
 Prov: private collection, Montreal
 ESTIMATE: 8,000/10,000

5
2

UNTITLED — ROCKY MOUNTAIN SKETCH

graphite on paper
 5.25 x 7.25 in. / 13 x 18 cm.
 signed lower right; archival mat
 Prov: Collector's Gallery, Calgary, label verso
 ESTIMATE: 1,200/1,400

JAPANESE

YOSHU CHIKANOBU

[1838-1912] Japanese

53 UNTITLED — TWO FIGURES ON A BALCONY
 colour wood block on paper
 12.75 x 8.75 in. / 32 x 22 cm.
 various Chinese characters upper right, side,
 and left margins and chop lower right;
 label bears 'Edo period, June 1, 1896'
 ESTIMATE: 400/500



TOYOHARA KUNICHIKA

[1835-1900] Japanese

54 UNTITLED — KUBUKI I
 colour wood block on paper
 13.5 x 9 in. / 34 x 23 cm.
 14 x 9.5 in. / 36 x 24 cm. — Paper Size
 bears various printed Japanese characters
 in plate and on margins; unframed
 Ref: according to owner, Kubuki theatre actors
 circa 1860-70
 ESTIMATE: 400/500

55 UNTITLED — KUBUKI II
 colour wood block on paper
 13.5 x 9 in. / 34 x 23 cm.
 14 x 9.5 in. / 36 x 24 cm. — Paper Size
 bears various printed Japanese characters
 in plate and on margins; unframed
 Ref: according to owner, Kubuki theatre actors
 circa 1860-70
 ESTIMATE: 400/500

56 UNTITLED — KUBUKI III
 colour wood block on paper
 13.5 x 9 in. / 34 x 23 cm.
 14 x 9.5 in. / 36 x 24 cm. — Paper Size
 bears various printed Japanese characters
 in plate and on margins; unframed
 Ref: according to owner, Kubuki theatre actors
 circa 1860-70
 ESTIMATE: 400/500

57 UNTITLED — KUBUKI IV
 colour wood block on paper
 13.5 x 9 in. / 34 x 23 cm.
 14 x 9.5 in. / 36 x 24 cm. — Paper Size
 bears various printed Japanese characters
 in plate and on margins; unframed
 Ref: according to owner, Kubuki theatre actors
 circa 1860-70
 ESTIMATE: 400/500

SHIGEKI KURODA

[b. 1953] Japanese

58 BLUE RAIN #13/50
 colour etching on paper
 19.25 x 14 in. / 49 x 36 cm.
 signed, titled and numbered along bottom
 ESTIMATE: 300/400

TANKEI

19th century Japanese

59 CHRYSANTHEMUMS
 colour wood block on paper
 9 x 11.75 in. / 23 x 30 cm.
 9.25 x 11.75 in. / 23 x 30 cm. — Paper Size
 Japanese characters and chops lower right;
 bears name and title on label verso;
 some fading and paper loss noted; fan shaped image
 Ref: label verso bears the following 'Publisher: Yamato
 Size: Oban Yokoye — Fan Print — Uchiwa Shape'
 Prov: Vincent Price Collection label verso;
 private collection, Toronto
 ESTIMATE: 100/150

KUNISADA TOYOKUNI III

[1786-1865] Japanese
 included in *Dict. des Peintres, Sculpteurs et Graveurs*, by E.Benezit, Tome.8, pg.364

60 UNTITLED — WARRIOR AND WOMAN
 colour wood block on paper
 13 x 8.5 in. / 33 x 22 cm.
 bears various Chinese writings along top; circa 1850-1860
 ESTIMATE: 500/700

TOMOE YOKOI

[b.1943] Japanese

61 CHERRIES # 79/100
 colour mezzotint on paper
 13.5 x 11.75 in. / 34 x 30 cm.
 signed, titled and numbered along bottom
 Ref: from *Nature Morte* portfolio
 ESTIMATE: 450/550

62 FLOWER #79/100
 colour mezzotint on paper
 11.75 x 11.75 in. / 30 x 30 cm.
 signed, titled and numbered along bottom
 Ref: from *Nature Morte* portfolio
 ESTIMATE: 450/550

FRANCES-ANNE JOHNSTON

[1910-1987] Canadian

OSA, RCA

biography in *Dict. of Canadian Artists*, by C.MacDonald, Vol.3 pg.566, daughter of Franz Johnston; see *R.C.A.A.*, pg.211 and *M.M.F.A.*, pg.193 by E.McMann, for exhibition list

63 WINTER GATHERING
 oil on canvas board
 18 x 14 in. / 46 x 36 cm.
 signed lower left; signed and titled verso
 Prov: Collector's Gallery, Calgary and Kastel Gallery,
 Montreal, labels verso
 ESTIMATE: 900/1,200

**AUGUSTUS FREDERICK LAFOSSE KENDERDINE**

[1870-1947] Canadian

see *Gus Kenderdine 1870-1947, Pioneer*, by J.Climer, Mendel Art Gallery; *Augustus Kenderdine*, by M.Spain, Glenbow Museum, 1986; author of *To the Youth of Saskatchewan*, Dept. of Education Saskatchewan, 1948; the Emma Lake workshop is held on land given by Kenderdine; *Dict. of Canadian Artists*, by C.MacDonald, Vol.3 pg.623; *Biographical Dict. of Saskatchewan Artists — Men*, by M.Newman, pg.133, Fifth House Pub., 1994; *N.G.C. Vol.2, G-K*, ed.C.Hill, pg.364

64 UNTITLED — AUTUMN REFLECTIONS
 oil on paper board
 12 x 18 in. / 30 x 46 cm.
 signed lower left
 ESTIMATE: 3,000/4,000

ILLINGWORTH HOLEY KERR

[1905-1988] Canadian

ASA, RCA

see *Harvest of the Spirit*, by M.Callahan, E.A.G., 1985 and *Paint and Circumstance*, by I.Kerr, Calgary, 1987; *N.G.C. Vol.2 G-K*, ed.C.Hill, pg.368; *Founders of the A.C.A.*, by V.Greenfield, pg.87; *Dict. of Canadian Artists*, by C.MacDonald, Vol.3 pg.633; biography in *Biographical Dict. of Saskatchewan Artists — Men*, by M.Newman, pg.137, Fifth House Pub., 1994

65 CANVAS BACKS
 watercolour on paper
 14.75 x 21.5 in. / 37 x 55 cm.
 signed with monogram lower left;
 mountain lake painting verso; some acid burns noted
 Prov: The estate of Francis M. Buchan; Canadian
 Art Galleries, Calgary [7th Avenue] label verso
 ESTIMATE: 900/1,200

JAC KING

[1920-1998] American

exhibited for many years at the Calgary Stampede Western Art Auction

66 UNTITLED — HORSES IN CAMP
 oil on canvas
 28 x 38 in. / 71 x 97 cm.
 signed lower left; cleaned by Cindy Lack,
 Edmonton, note verso
 Prov: ex-collection Jean Clarke, Conquest Art, Calgary
 ESTIMATE: 4,000/6,000

DOROTHY KNOWLES

[b.1927] Canadian
see *Dorothy Knowles Paintings 1964-1982*, by T.Fenton, E.A.G. and biography in *Biographical Dict. of Saskatchewan Artists — Women*, by M.Newman, pg.100, Fifth House Publishing; included in *Selected View: The Longstaffe Collection 1959-1984*, by L.Farrell-Ward, V.A.G., pg.75; biography and another example in 1975-76 *The Canadian Canvas*, by Time Canada Ltd., 1975; included in www.artcyclopediapedia.com; represented by ArtPlacement, Saskatoon

6
7


GREEN TREES (FIREWEED)
watercolour on paper
5.25 x 7 in. / 13 x 18 cm. Dated: 1984
signed and dated lower right
Prov: Collector's Gallery, Calgary,
and Waddington & Gorce Inc., Montreal, labels verso
ESTIMATE: 800/1,000

WANG KUI

[b.1958] Canadian
represented by Collector's Gallery, Calgary

6
8

UNTITLED — MOUNTAIN SUMMER DAY
gouache on paper
10.5 x 13.75 in. / 27 x 35 cm.
signed lower right; archival mat
Prov: Collector's Gallery, Calgary, label verso
ESTIMATE: 600/800

WILLIAM KURELEK

[1927-1977] Canadian
OSA, RCA
see *Someone With Me: the Autobiography of William Kurelek*, by W.Kurelek; *Kurelek's Canada*, by W.Kurelek, Pagurian Press, 1978; *William Kurelek: A Retrospective*, by A.Isaacs, E.A.G., 1979; *N.G.C. Vol.2, G-K*, ed.C.Hill, pg.390; *Dict. of Canadian Artists*, by C.MacDonald, Vol.3 pg.693 for biography; *A Memoir of William Kurelek*, by B.Dedora, Aya Press, 1989; illustrator and author of several books including *A Prairie Boy's Summer*, *A Prairie Boy's Winter*, *A Northern Nativity*, *They Sought a New World*, plus others

6
9

CAN IT MAKE ITSELF BECOME?
ink on paper
2.75 x 7 in. / 7 x 18 cm. Dated: 1970 ca.
titled with authentication note by Jean Kurelek verso
Ref: used as illustration in *Someone With Me, The Autobiography of William Kurelek*, published by J. Maas 1973
Prov: D&E Lake Fine Arts, Toronto, label verso
ESTIMATE: 600/800

STEVEN LAMB

20th century Canadian

7
0

CASSIUS
oil on particle board
20 x 16 in. / 51 x 41 cm. Dated: 1999
signed and dated lower right; signed and titled verso
ESTIMATE: 900/1,200

CLAUDE LANGEVIN

[b.1942] Canadian
see *Dict. of Canadian Artists*, by C.MacDonald, Vol.3 pg.730 for biography; *Guide Vallee, III Edition*, by F.Vallee, pg.678, pub. Le Guide Vallee, 1992

7
1


A LA SORTIE DU VILLAGE
oil on canvas
24 x 30 in. / 61 x 76 cm.
signed lower left; signed and titled verso
ESTIMATE: 1,800/2,400

7
2

LE MEDECIN
oil on canvas board
16 x 20 in. / 41 x 51 cm.
signed lower left; signed and titled verso
Prov: Master's Gallery, Calgary
ESTIMATE: 1,200/1,500

MICHAEL LONECHILD

[b.1955] Canadian
listed in *Artists in Canada — a Union List of Artists's Files*, by S.Hasbury, pg.433; artist listed on C.H.I.N. web site
www.chin.gc.ca/Resources/e_resources

7
3


NETTING AT ROUND LAKE (QU'APPELLE)
acrylic on canvas
24 x 36 in. / 61 x 91 cm.
signed lower right; signed and titled verso
Prov: private collection, Calgary
ESTIMATE: 1,500/2,000

7
4

THE WOLF SPIRITS WATCH OVER HER
acrylic on canvas
20 x 16 in. / 51 x 41 cm.
signed lower right; signed and titled verso
Prov: private collection, Calgary
ESTIMATE: 900/1,200

ERNEST LUTHI

[1906-1983] Canadian
 see *Ernest Luthi 1906-1983*, by C.Phillips, Mackenzie Art Gallery, 1984; biography in *Biographical Dict. of Saskatchewan Artists — Men*, by M.Newman, pg.160, Fifth House Pub., 1994

7 UNTITLED — SASKATCHEWAN GRAIN
 ELEVATORS IN WINTER

oil on canvas board
 16 x 20 in. / 41 x 51 cm.
 signed lower right
 Prov: private collection, Swift Current
 ESTIMATE: 700/900

JOHN GOODWIN LYMAN

[1886-1967] Canadian
 CGP
 see *John Lyman 1886-1967*, by L.Dompierre, Agnes Etherington Art Centre, 1986 for complete overview of the artist's career; *N.G.C. Vol.III*, by R.Hubbard, pg.185; *Dict. of Canadian Artists*, by C.MacDonald, Vol.4 pg.936 for biography

7 UNTITLED — LANDSCAPE

oil on canvas
 3.5 x 5.5 in. / 9 x 14 cm.
 signed verso
 Prov: private collection, Montreal
 ESTIMATE: 1,500/2,000

7 UNTITLED — RECLINING NUDE

graphite on paper
 9.5 x 13.75 in. / 24 x 35 cm.
 signed lower centre; archival mat
 Prov: private collection, Montreal
 ESTIMATE: 800/900

**JAMES EDWARD HERVEY MACDONALD**

[1873-1932] Canadian
 OSA, RCA
 see *J.E.H. MacDonald* by A.Robson, Ryerson Press, 1937; *J.E.H. MacDonald, R.C.A. 1873-1932*, by N.Robertson, A.G.O. 1965; *The Tangled Garden*, by P.Duval, Cerebus Pub., Toronto, 1978; *J.E.H. MacDonald Sketchbook, 1915-1922*, by J.E.H. Macdonald, Penumbra Press, 1979; biography in *N.G.C. Vol.III*, by R.Hubbard, pg.188; *A.G.O.*, by the A.G.O., pg.266; exhibition list in *R.C.A.A.*, by E.McMann, pg.252

7 LAKE O'HARA

colour pencil on paper
 2.5 x 3 in. / 6 x 8 cm. Dated: 1928
 signed with initials and dated lower right;
 various colour notations in margin; titled and inscribed
 by Thoreau MacDonald along bottom; archival mat
 Prov: D&E Lake Fine Arts, Toronto, label verso
 ESTIMATE: 700/900

PEGI NICOL MACLEOD

[1904-1949] Canadian
 CGP, CSPWC
 biography and another example in *N.G.C. Vol.III*, by R.Hubbard, pg.204 as well as *A.G.O.*, by the A.G.O., pg.293; *By a Lady: Celebrating Three Centuries of Art by Canadian Women*, by M.Tippett, pg. 110, Viking Penguin, 1992; *Visions and Victories: 10 Canadian Women Artists 1914-1945*, by N.Luckyj, pg.58, London Regional Art Gallery, 1983; exhibition list *R.C.A.A.*, by E.McMann, pg.304 and *M.M.F.A.*, by E.McMann, pg.283

7 AUTUMN

oil on board
 10.25 x 13.75 in. / 26 x 35 cm. Dated: 1930 ca.
 unsigned; label verso bears title, date and provenance
 Prov: Macleod estate;
 D&E Lake Fine Arts, Toronto, label verso
 ESTIMATE: 2,500/3,500

THOMAS MOWER MARTIN

[1838-1934] Canadian
OSA, RCA

see *N.G.C. Vol.III*, by R.Hubbard, pg.208; *A.G.O.*, by the A.G.O., pg.299; *R.O.M. Canadian Watercolours*, by M.Allodi; biography in *E.P.E.C.*, by R.Harper, pg.217, founding member of the O.S.A. and charter member of the R.C.A.; *Dict. of Canadian Artists*, by C.MacDonald, Vol.4 pg.1113; *R.C.A.A.*, pg.27 and *M.M.F.A.*, by E.McMann, pg.255; *Robson*, pg.42; *Colgate*, pg.24

80 UNTITLED — OLD MILL

oil on canvas
20.5 x 13.75 in. / 52 x 35 cm.
signed lower centre; some pigment loss
and varnish discolouration noted
Prov: private collection, Edmonton
ESTIMATE: 1,200/1,500

**ROBERT F.M. McINNIS**

[b.1942] Canadian

see *Spaces and Places — Eight Decades of Landscape Painting in Alberta*, by J.Ironside, pg.106 as well as *Dict. of Canadian Artists*, by C.MacDonald, Vol.4 addendum for biography; represented by Masters Gallery, Calgary and Roberts Gallery, Toronto

81 ELEVATORS, ALT.

oil on canvas
36 x 72 in. / 91 x 183 cm. Dated: 1982
signed and dated lower centre; signed, titled and dated
verso; two canvases [each 36x36] framed together
ESTIMATE: 1,500/2,000

82 CN REDLAND, ALTA.

oil on particle board
9 x 11.75 in. / 23 x 30 cm. Dated: 1978
signed lower left; signed, titled and dated verso
Prov: Collector's Gallery, Calgary, label verso
ESTIMATE: 600/800

83 GIRL WITH BLUE SLIP AND PLANT

oil on canvas
24 x 16 in. / 61 x 41 cm.
signed lower right; titled verso; small tear lower centre;
unframed
Prov: private collection, Calgary
ESTIMATE: 600/800

FRANCIS JOHN MILLER

[b.1929] Canadian

biography in *Dict. of Canadian Artists*, by C.MacDonald, Vol.4, pg.1219

84 UNTITLED — STILL LIFE

oil on particle board
18 x 48 in. / 46 x 122 cm. Dated: 1961
indistinctly signed and dated lower right
Prov: gift from the artist
and by descent to private collection, Regina
ESTIMATE: 900/1,200

NORVAL MORRISSEAU

[b.1931] Canadian

RCA

see *Norval Morriseau*, by N.Morriseau, Musee de Quebec, 1966; *The Art of Norval Morriseau*, by N.Morriseau, Methuen Pub., 1979; *Time for Dialogue*, by J.Cardinal-Schubert, pg.18, Calgary Aboriginal Awareness Society, 1992 as well as *Dict. of Canadian Artists*, by C.MacDonald, Vol.4 pg.1304 for biography

85 SHAMAN'S WORLD

acrylic on canvas
60 x 59.5 in. / 152 x 151 cm.
signed lower centre, titled upper right; professionally
stretched over board with edges showing
ESTIMATE: 9,000/12,000

MORRISSEAU continued

86 UNTITLED — WATERGOD
 acrylic on paper
 17.5 x 29 in. / 44 x 74 cm. Dated: 1965 ca.
 signed in syllabics lower right;
 some tape stains noted verso
 Prov: purchased from The Pollock Gallery, Toronto;
 private collection, Toronto
 ESTIMATE: 2,500/3,500

87 UNTITLED — SIX RAVENS
 acrylic on paper
 17.75 x 23 in. / 45 x 58 cm.
 signed in syllabics lower left
 Prov: Concourse Aboriginal Gallery, Winnipeg, stamp verso
 ESTIMATE: 2,500/3,500

RITA MOUNT

[1889-1967] Canadian
 ARCA

biography and other examples in *N.G.C. Vol.III*, ed.R.Hubbard, pg.230; biography in *Dict. of Canadian Artists*, by C.MacDonald, Vol.4,pg.1320; exhibition list in *R.C.A.A.*, pg.296 and *M.M.F.A.*, by E.McMann, pg.275

88 MARKET TIME
 oil on canvas board
 5 x 7 in. / 13 x 18 cm.
 signed and titled verso
 ESTIMATE: 600/800

LOUIS MUHLSTOCK

[b.1904] Canadian
 CGP, CSPWC, FCA

see *Louis Muhlstock: A Survey of Forty Five Years*, by C.Hill, Windsor Art Gallery, 1976; *Muhlstock*, by M.Nadeau-Saumier, Musee du Quebec, 1995; *N.G.C. Vol.III*, by R.Hubbard, pg.231 and *A.G.O.*, by the A.G.O., pg.326; see biography and other examples in *Jewish Painters and Modernity, Montreal 1930-1945*, by E.Trepanier, pg.153, Centre Saidye-Bronfman, 1987; biography in *Benezit*, Tome.7, pg.585

89 FLORA SERIES, THISTLE
 mixed media on paper
 11.25 x 8 in. / 29 x 20 cm. Dated: 1970
 signed and dated lower left;
 signed, titled, dated and inscribed on backing verso
 Ref: inscribed 'Exhibited Verdun Cultural Centre Sept.'72 #39'
 Prov: purchased directly from the artist;
 private collection, Victoria
 ESTIMATE: 400/500

90 UNTITLED — FLORA SERIES
 mixed media on paper
 19.5 x 11.5 in. / 50 x 29 cm. Dated: 1972
 signed lower centre; signed and dated on backing verso
 Prov: purchased directly from the artist; private collection, Victoria
 ESTIMATE: 400/500

91 UNTITLED — FLETCHER'S FIELD
 ink on paper
 6.75 x 9.25 in. / 17 x 23 cm. Dated: 1932
 signed and dated lower left; inscribed on paper verso
 Ref: inscription notes 'see page 90-91 in 'Bethune, the Montreal Years' [chapters by Libbie Park] Fletcher's Field'
 Prov: gift from the artist; private collection, Victoria
 ESTIMATE: 200/300

RONALD L. MYREN

[b.1937] Canadian
 biography in *Shell Canada Collection*, by B.Shammas, pg.37

92 NEAR THE CHICOTIN RIVER
 oil on particle board
 24 x 32 in. / 61 x 81 cm.
 signed lower right; signed and titled verso
 Prov: Horizon Galleries, Vancouver, stamp verso
 ESTIMATE: 400/600

93 HILL NEAR ALEXIS CREEK
 oil on particle board
 17.75 x 24 in. / 45 x 61 cm.
 signed lower right; signed and titled verso
 ESTIMATE: 300/500

GABOR L. NAGY

[b.1945] Canadian
 listed in *Guide Vallee, III Edition*, by F.Vallee, pg.835, pub. Le Guide Vallee, 1992

94 YOU MUST COUNT ALL THE ROSES
 oil on canvas
 30 x 40 in. / 76 x 102 cm. Dated: 2000
 signed lower right; titled and dated verso; unframed
 ESTIMATE: 1,800/2,200

DONALD FREDERICK PRICE NEDDEAU

[1913-1998] Canadian
RCA

biography in *Dict. of Canadian Artists*, by C.MacDonald, Vol.5, pg.1355; exhibition list in *R.C.A.A.*, pg.300 and *M.M.F.A.*, by E.McMann, pg.281

59 UNTITLED — FEMALE FIGURE STUDY

watercolour on paper
19.25 x 14 in. / 49 x 36 cm. Dated: 1937
signed and dated lower left; archival mat
Prov: purchased from the estate of the artist;
D&E Lake Fine Arts, Toronto, label verso
ESTIMATE: 1,200/1,500



69 UNTITLED — FISHING BOATS, GASPE

oil on particle board
16 x 19.75 in. / 41 x 50 cm. Dated: 1956 ca.
unsigned
Prov: purchased from the estate of the artist;
D&E Lake Fine Arts, Toronto, label verso
ESTIMATE: 600/800



DR. J. WILLIAMS OGDEN

19/20 century Canadian

97 WHERE QUIET WATERS GLIDE — MOUNT RUNDLE ...

oil on paper board
11.75 x 11.75 in. / 30 x 30 cm.
signed lower right; signed and titled verso
Prov: Petley Jones Gallery, Vancouver, label verso
ESTIMATE: 400/600



WILLIAM ABERNETHY OGILVIE

[1901-1989] Canadian

CGP, CSPWC, RCA

biography and other examples in *N.G.C., Vol.III*, by R.Hubbard, pg.239 and *A.G.O.*, by the A.G.O., pg.343; biography in *Dict. of Canadian Artists*, by C.MacDonald, Vol.5, pg.1423; exhibition list in *R.C.A.A.*, pg.310 and *M.M.F.A.*, by E.McMann, pg.289

98 OLD CITY HALL, STEWART B.C.

graphite on paper
11.5 x 17.25 in. / 29 x 44 cm. Dated: 1957
signed lower right; titled and dated verso; archival mat
Prov: D&E Lake Fine Arts, Toronto, label verso
ESTIMATE: 600/700

URSULA PAGENKOPF

20th century Canadian

represented by Artnest Gallery, Calgary

99 FEELIN' SOOO GOOD!

oil on canvas
14 x 18 in. / 36 x 46 cm.
signed lower left; signed and titled verso
ESTIMATE: 600/800



100 ONCE UPON A FAIRYTALE

oil on canvas
16 x 20 in. / 41 x 51 cm.
signed lower right; signed and titled verso
ESTIMATE: 600/800

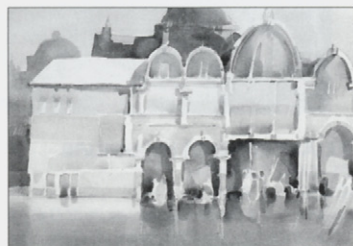
FRANKLIN [FRANK] PALMER

[1921-1990] Canadian
ASA, CSPWC, RCA

see *Founders of the A.C.A.*, by L.Greenfield, pg.96, for biography and another example of the artist's work as well as *Dict. of Canadian Artists*, by C.MacDonald, Vol.5, pg.1471 for biography; included in *Jubilee Exhibition of Alberta Paintings*, by J.Nicoll, pg.25, Calgary Allied Art Centre, 1955; *A.G.O.*, by the A.G.O., pg.348

101 VENICE

watercolour on paper
17.75 x 23.75 in. / 45 x 60 cm. Dated: 1972
signed lower right; archival mat
Prov: Master's Gallery, Calgary, label verso
ESTIMATE: 500/700

**FRANK SHIRLEY PANABAKER**

[1904-1992] Canadian

author of *Reflected Lights*, by F.Panabaker, Ryerson Press, 1957; biography in *Dict. of Canadian Artists*, by C.MacDonald, Vol.5 pg.1478; exhibition list in *R.C.A.A.*, by E.McMann, pg.313

102 UNTITLED — EVENING SURF

oil on canvas
35.25 x 45 in. / 90 x 114 cm. Dated: 1933
signed and dated lower left; in period frame;
surface dirt and some abrasions noted
Ref: A seascape of Panabaker's was purchased by the mother of the President of the United States while visiting an exhibition at the Birks Building, Hamilton in 1934. It was subsequently hung by FDR in the White House
Prov: private collection, Edmonton
ESTIMATE: 3,000/4,000

103 UNTITLED — SUMMER SKY

oil on canvas board
16 x 17.75 in. / 41 x 45 cm.
signed lower left; in period frame
Prov: private collection, Edmonton
ESTIMATE: 1,200/1,500

JAMES STANFORD [STAN] PERROTT

[b.1917] Canadian
ASA

biography and another example in *Founders of the A.C.A.*, by L.Greenfield, pg.97; *Artists of Alberta*, by S.Baker, pg.86, U. of A. Press, 1980; included in *Jubilee Exhibition of Alberta Paintings*, by J.Nicoll, pg.26, Calgary Allied Art Centre, 1955; *Dict. of Canadian Artists*, by C.MacDonald, Vol.6, pg.1612 for biography;

104 EARLY MORNING

watercolour on paper
21.5 x 29 in. / 55 x 74 cm. Dated: 1998
signed and dated lower right; archival mat;
glazed with Denglas
Prov: Master's Gallery, Calgary
ESTIMATE: 1,200/1,500

GEORGE DOUGLAS PEPPER

[1903-1962] Canadian
CGP, CSPWC, OSA, RCA

biography and other examples in *N.G.C. Vol.III*, by R.Hubbard, pg.245; *A.G.O.*, by the A.G.O., pg.363; biography in *Dict. of Canadian Artists*, by C.MacDonald, Vol.5, pg.1590; exhibition list in *R.C.A.A.*, pg.322 and *M.M.F.A.*, by E.McMann, pg.300

105 FAST WATER AT KANANS[K]IS

oil on canvas board
15 x 18 in. / 38 x 46 cm. Dated: 1940 's
signed lower right; titled on artist's label verso;
two small pencil sketches verso
Ref: *Art Gallery of Toronto, Women's Committee Exhibition* label verso [no date]; the artist had a studio in the Studio Building from 1932 to 49; he was in the Banff region several times; he taught at the Banff School of Fine Art in 1942 and several years thereafter
ESTIMATE: 3,000/3,500

106 ANDALUSIAN VILLAGE 2

oil on canvas board
14 x 18 in. / 36 x 46 cm. Dated: 1950 's
signed lower left; bears title on exhibition label verso
Ref: #116 *Art Gallery of Toronto* label verso
Prov: purchased by grandmother and by descent to Calgary collection
ESTIMATE: 1,800/2,200

GERTRUDE F. PERCIVAL

20th century Canadian
exhibition list in *R.C.A.A.*, pg.322 and *M.M.F.A.*, by E.McMann, pg.300

107 UNTITLED — PORTRAIT OF A DARK-HAIRED WOMAN

oil on paper board
23.5 x 19.25 in. / 60 x 49 cm.
unsigned; graphite sketch verso
Prov: certified to be by the artist on label from D&E Lake Fine Arts, Toronto, verso
ESTIMATE: 800/1,200

WALTER JOSEPH PHILLIPS

[1884-1963] Canadian
 ASA, CPE, CSPWC, MSA, RCA
 see *Walter J. Phillips*, by D.Scott, Ryerson Press, 1947; *Walter J. Phillips, A Selection of His Works and Thoughts*, by M.Gribbon, N.G.C., 1978; *The Tranquillity and the Turbulence: The Life and Works of Walter J. Phillips*, by R.Boulet, Loates Publishing, 1981; *Phillips in Print*, ed. M.Tippett, Manitoba Records Soc., 1982; web site can be found at www.sharecom.ca/phillips/

108

ESSAYS IN WOOD PORTFOLIO

- DUGOUT
- THE HOH-HOK HOUSE POSTS AT KARLUKWEES
- HOUSE OF THE GULLS, KARLUKWEES
- ZUNUK, KARLUKWEES
- SHACKS ON THE BEACH, KARLUKWEES
- RUIN, TSATSISNUKOMI
- THUNDERBIRD, ALERT BAY
- THE CLOTHES LINE, MAMALILICOOLA
- THE FLOATING DOCK, MAMALILICOOLA
- COMMUNITY HOUSES, MAMALILICOOLA

wood engraving on paper; drymounted

various sizes Dated: 1930

signed along bottom; drymounted

Ref: *Scott WE#2-11*; *MBL #137-146* ed:120;

from *Essays in Wood* portfolio

Prov: private collection, Winnipeg

LOT OF TEN — ESTIMATE: 4,000/6,000

109

HOUSE OF THE GULLS, KARLUKWEES #20/120

wood engraving on paper

4.5 x 5 in. / 11 x 13 cm. Dated: 1930

signed and numbered along bottom; archival mat; glazed with Denglax

Ref: *Scott WE#4*; *MBL #139* ed:120;

from *Essays in Wood* portfolio

Prov: Master's Gallery Framing, Calgary,

label verso

ESTIMATE: 400/600

110

STOCKTON, MANITOBA

wood engraving on paper

3.5 x 6.75 in. / 9 x 17 cm. Dated: 1932

signed and titled along bottom

Ref: *Scott WE#44*; *MBL #186* first ed:50;

second ed:300 in 1956

ESTIMATE: 400/600

111

THE SOURCE OF THE BOW

wood engraving on paper

6.5 x 4 in. / 17 x 10 cm. Dated: 1936

signed along bottom

Ref: *Scott WE#66*; *MBL #217* ed: unknown

ESTIMATE: 400/600

ROGER H. BOULET

20th century Canadian

web site at 199.185.138.2/boulet/resume.html

112

WALTER J. PHILLIPS

— THE COMPLETE GRAPHIC WORKS #110/150

book

14.5 x 18.5 x 4 in. / 37 x 47 x 10 cm. Dated: 1981

signed and numbered by author on frontispiece;

lacking posthumous print; leather bound book in case; some handling marks

Ref: published by M.B.Loates Publishing Limited;

the definitive reference book on Phillips graphic work

Prov: published by M.B. Loates Publishing, Markham

ESTIMATE: 1,000/1,500

ROBERT WAKEHAM PILOT

[1898-1967] Canadian

RCA

see *A.G.O.*, by the A.G.O., pg.378; *N.G.C. Vol.III*, by R.Hubbard, pg. 249; *Dict. of Canadian Artists*, by C.MacDonald, Vol.6, pg.1702 for biography; *Printmaking in Quebec, 1900-1950*, by D.Martin, pg.118, Musee du Quebec, 1988

113

SUMMER

oil on canvas

22 x 28 in. / 56 x 71 cm. Dated: 1939

signed and dated lower right; some surface dirt noted

Prov: private collection, Edmonton

ESTIMATE: 12,000/15,000

Ref: the artist became a professor of Engraving at the Ecole des Beaux-Arts, replacing Edwin Holgate; he exhibited a painting titled 'Early Spring, St. Sauveur' with the RCA in 1941, the same year he re-joined the Canadian Army and was later made a Member of the Order of the British Empire because of his activities in the Italian campaign.

JANE ASH POITRAS

[b.1951] Canadian

see *Who Discovered the Americas, Recent Work* by *Jane Ash Poitras*, by J.Clark, Thunder Bay Art Gallery, 1992; biography and another example in *Survey Alberta 88*, by A.MacKay, pg.49, A.C.A., 1988; included in *Indigena: Contemporary Native Perspectives*, by G.McMaster, pg.164, Canadian Museum of Civilization, 1992; included in the Alberta Biennial of Contemporary Art, 1996

114

BALD HEADED EAGLE; BIRD OF MYSTERY, BIRD OF BEAUTY

mixed media collage on canvas

24 x 24 in. / 61 x 61 cm.

signed lower right, titled centre; unframed

Prov: Collector's Gallery, Calgary, label verso

ESTIMATE: 2,000/2,500

GASTON REBRY

[b.1933] Canadian
see *Dict. of Canadian Artists*, by C.MacDonald, Vol.7 pg.1959 for biography; *Guide Vallee, III Edition*, by F.Vallee, pg.923, pub. Le Guide Vallee, 1992

115 HORIZON EN AUTOMNE

oil on canvas
16 x 20 in. / 41 x 51 cm. Dated: 1984
signed lower right; titled, inscribed and dated verso
Prov: private collection, Calgary
ESTIMATE: 900/1,200

116 WINTER SILENCE

oil on canvas
16 x 12 in. / 41 x 30 cm.
signed lower right; signed, titled and artist's stamp verso
ESTIMATE: 750/1,000

ISOBELLE CHESTNUT REID

[b.1903] Canadian
biography in *Dict. of Canadian Artists*, by C.MacDonald, Vol. 7, pg.2000; exhibition list in *R.C.A.A.*, pg.341 and *M.M.F.A.*, pg.319 by E.McMann

117 UNTITLED — FAMILY IN THE PARK

watercolour on paper
9.5 x 11.5 in. / 24 x 29 cm. Dated: 1978
signed lower right; archival mat
Prov: ex-collection Norman S.C. Reid, Toronto;
Collector's Gallery, Calgary, label verso
ESTIMATE: 400/500

WILLIAM GOODRIDGE ROBERTS

[1904-1974] Canadian
CSPWC, OSA, RCA
see *Goodridge Roberts, A Retrospective Exhibition*, by J.Borcoman, NGC, 1969; *William Goodridge Roberts 1904-1974, Drawings*, Agnes Etherington Art Centre, 1976; *Goodridge Roberts 1904-1974*, by S.Paikowsky, McMichael Canadian Collection, 1998; *NGC Vol.III*, by R.Hubbard, pg.260; *AGO*, by the A.G.O., pg.395; *Dict. of Canadian Artists*, by C.MacDonald, Vol.7 pg.2168; *M.M.F.A.*, by E.McMann, pg.325; *Benezit*, Tome.9, pg.11

118 UNTITLED — LAURENTIAN LANDSCAPE

watercolour on paper
13.25 x 19.5 in. / 34 x 50 cm.
signed lower right; archival mat
Prov: Dominion Galleries, Montreal, label verso;
private collection, Montreal
ESTIMATE: 3,000/3,500

CLIFFORD FOARD ROBINSON

[1917-1992] Canadian
ASA, CSGA, FCA
see *Printmaking in Alberta 1945-1985*, by B.Cochran, pg.119; *Images of the Land, 1919-1945*, by P.Ainslie, pg.93; *The Society of Canadian Painter-Etchers and Engravers in Retrospect*, by A.Oko, pg.76, Art Gallery of Hamilton, 1981; included in *Jubilee Exhibition of Alberta Paintings*, by J.Nicoll, pg.27, Calgary Allied Art Centre, 1955; see *Printmaking in B.C. 1883-1983*, by N.Tuele, A.G.G.V. for another example of this artist's work; a relative informed us that the artist's middle name is 'Foard' not 'Feard', as previously catalogued

119 UNTITLED — PORTRAIT OF A WOMAN, MEXICO

oil on paper
26.75 x 20.25 in. / 68 x 51 cm. Dated: 1946
signed, titled and inscribed 'Mexico' lower right
Prov: private collection, Alberta
ESTIMATE: 800/1,000

120 LONDON UNDERGROUND

chalk on paper
12 x 15.5 in. / 30 x 39 cm. Dated: 1950
signed with initials lower left; signed, dated and titled verso; archival mat front and back
Prov: purchased from the artist; private collection, Alberta
ESTIMATE: 350/450

121 OLD FIREHALL, BANFF, ALTA. #37/75

wood block on paper
5.25 x 8 in. / 13 x 20 cm.
signed with monogram in block lower left; signed, titled and numbered along bottom; archival mat
Prov: Webster Galleries, Calgary, label verso;
private collection, Calgary
ESTIMATE: 250/350

122 EGYPTIAN MASK

linoblock on paper
7.5 x 6 in. / 19 x 15 cm.
signed and titled along bottom; archival mat
ESTIMATE: 150/250

CARL FELLMAN SCHAEFER

[1903-1995] Canadian

CGP, CSGA, CSPWC, RCA

see *Carl Schaefer Retrospective Exhibition*, by G.Johnston, Sir George Williams University, 1969; *Carl Schaefer*, by M.Gray, Gage Pub. Canadian Artists #3, 1977; *Painter of the Soil, Carl Schaefer, Works on Paper*, by R.Tovell, N.G.C.1999; *A.G.O.*, by the A.G.O., pg.410; and *N.G.C. Vol.III*, by R.Hubbard, pg. 275; *Canadian Art Magazine*, Vol.XVII, No.2, March 1960, by R.Bloore, pg.66

1
2
3**LATE NIGHT ON RAVEN LAKE**

watercolour on paper

10.75 x 14.75 in. / 27 x 37 cm. Dated: 1964

signed and dated lower right; titled and dated verso; archival mat

Prov: Collector's Gallery, Calgary, label verso

ESTIMATE: 2,500/3,000

1
2
4**FARM, HANOVER**

ink on paper

5.25 x 6.25 in. / 13 x 16 cm. Dated: 1926

signed, titled and dated along bottom; archival mat

Prov: Collector's Gallery, Calgary, label verso

ESTIMATE: 1,000/1,200

**NORTH AMERICAN SCHOOL**

19th century

1
2
5**UNTITLED — WATERFALL WITH VILLAGE IN BACKGROUND****together with****UNTITLED — WINTER VILLAGE SCENE**

oil on canvas

14 x 20 in. / 36 x 51 cm.

unsigned; some restoration noted

Prov: Collector's Gallery, Calgary, label verso

LOT OF TWO — ESTIMATE: 3,500/4,500**ADAM SHERRIFF SCOTT**

[1887-1980] Canadian

RCA

biography and another example in *N.G.C., Vol.III*, by R.Hubbard, pg.277; exhibition list in *R.C.A.A.*, pg.367 and *M.M.F.A.*, by E.McMann, pg.343

1
2
6**SPRING FLOODS, ISLE PERROT, 1963**

oil on particle board

16 x 20 in. / 40 x 50 cm. Dated: 1963

unsigned; bears inscription 'Studio Painting

by Adam Sherriff Scott from Sketch by

Rosamond Whitson Tiedemann' verso; unframed

Ref: Rosamond Tiedemann [b.1909]

listed in Union List page 682

ESTIMATE: 500/700

MARGARET SHELTON

[1915-1984] Canadian

ASA

see *Margaret Shelton: Block Prints 1936-1984*, by P.Ainslie, Glenbow Museum; and *Print-making in Alberta 1945-1985*, by B.Cochran, pg.132; and *Images of the Land, 1919-1945*, by P.Ainslie, pg.90, for biography and other examples of the artist's work; included in *Jubilee Exhibition of Alberta Paintings*, by J.Nicoll, pg.28, Calgary Allied Art Centre, 1955

1
2
7**HAY BARN FAIRMONT**

oil on canvas board

18 x 24 in. / 46 x 61 cm. Dated: 1978

signed and dated lower right; titled verso

ESTIMATE: 900/1,200

1
2
8**UNTITLED — WATER WHEEL**

watercolour on paper

10 x 14.5 in. / 25 x 37 cm. Dated: 1937

signed and dated lower right

Prov: private collection, Alberta

ESTIMATE: 500/700

1
2
9**PILOT MOUNTAIN**

watercolour on paper

15 x 10.25 in. / 38 x 26 cm.

signed lower right; titled verso; unframed

Prov: private collection, Alberta

ESTIMATE: 500/700

1
3
0**UNTITLED — PRAIRIE SENTINELS**

watercolour on paper

10.25 x 14 in. / 26 x 36 cm. Dated: 1980

signed and dated lower left; unframed

Prov: private collection, Alberta

ESTIMATE: 500/700

1
3
1**BOW FALLS AT BANFF**

linoblock in eight colours on paper

8.75 x 11.75 in. / 22 x 30 cm. Dated: 1972

10 x 13 in. / 25 x 33 cm. — Paper Size

unsigned; letter of authenticity enclosed with lot;

unframed

Ref: *MSBP #147* first ed:200, second ed:100;illustrated *MSBP*, by P.Ainslie, pg.32

Prov: private collection, Alberta

ESTIMATE: 600/800

SHELTON continued

**1
2
3** SAINT GEORGES, BANFF #91/100
linoblock in six colours on paper
4.5 x 5.75 in. / 11 x 15 cm. Dated: 1944
6 x 7.25 in. / 15 x 18 cm. — Paper Size
signed, titled, dated 1974,
and edition # along bottom unframed
Ref: *MSBP #87* ed:300
Prov: private collection, Alberta
ESTIMATE: 400/600

**1
3
3** BARN AT LOMOND #8/50
linoblock on paper
5 x 7.25 in. / 13 x 18 cm. Dated: 1941
signed in block lower right; signed, titled and numbered
along bottom; archival mat; glazed with Denglas
Ref: *MSBP #52*, ed:50;
reproduced *The New Trail*, U of A, 1944
Prov: Master's Gallery Framing, Calgary, label verso
ESTIMATE: 250/350

**1
3
4** FIRST PUBLIC LIBRARY, CALGARY #136/200
linoblock on paper
3.75 x 5.25 in. / 10 x 13 cm. Dated: 1941
signed, titled, dated 1975 and numbered along bottom;
archival mat; glazed with Denglas
Ref: *MSBP #47*, ed:200; also titled
'Calgary Public Library', 'The Old Library, Calgary' and
'First Public Library, Calgary'
Prov: Master's Gallery Framing, Calgary, label verso
ESTIMATE: 200/250

CLAUDE A. SIMARD

[b.1943] Canadian
biography and another example in *Guide
Vallee, III Edition*, by F.Vallee, pg.990, pub. Le
Guide Vallee, 1992; artist listed on C.H.I.N. web
site www.chin.gc.ca/Resources/e_resources

**1
3
5** GERANIUM SUR FOND BLEU
watercolour on paper
13.75 x 15.25 in. / 35 x 39 cm. Dated: 1996
signed and dated lower right; bears title on label verso;
archival mat
Prov: West End Gallery, Edmonton, label verso
ESTIMATE: 600/800

HENRY JOHN SIMPKINS

[b.1906] Canadian
ARCA
exhibition list in *R.C.A.A.*, pg.376 and *M.M.F.A.*,
pg.353 by E.McMann

**1
3
6** UNTITLED — FOOTHILLS RANCH
watercolour on paper
19.75 x 27.7 in. / 50 x 70 cm.
signed lower left; archival mat
Prov: D&E Lake Fine Arts, Toronto, label verso
ESTIMATE: 1,200/1,500

CHARLES WALTER SIMPSON

[1878-1942] Canadian
RCA
biography and other examples in *N.G.C. Vol.III*,
by R.Hubbard, pg.282; see other graphic exam-
ples in *Printmaking in Quebec, 1900-1950*, by
D.Martin, pg.130; exhibition list in *R.C.A.A.*,
pg.376 and *M.M.F.A.*, pg.353 by E.McMann;
Robson, pg.130; *Colgate*, pg.127

**1
3
7** THREE STATELY SISTERS AT CANMORE
oil on canvas
13 x 16.25 in. / 33 x 41 cm. Dated: 1925 ca.
signed lower right; relined with some touch-ups noted
Ref: illustrated in *Among the Mountains* by M. Hargadon,
Southam Press, 1925; pamphlet included with lot
ESTIMATE: 600/800

**1
3
8** UNTITLED — HOTEL WITH LOMBARDY POPLARS
oil on canvas
12.75 x 16 in. / 32 x 41 cm.
signed lower left
ESTIMATE: 500/600



GORDON APPELBY SMITH


[b.1919] Canadian
BCSA, CGP, CPE, RCA
see *Gordon Smith Recent Work* by K.Wallace, V.A.G., 1988; *A.G.O.*, by the A.G.O., pg.423 as well as *N.G.C. Vol.III*, by R.Hubbard, pg. 283 for biography and other examples; biography and another example in *1975-76 The Canadian Canvas*, by Time Canada Ltd., 1975; included in *7 West Coast Painters*, by I.McNairn, Fine Arts Gallery, U.B.C., 1959

1
3
9


UNTITLED — ABSTRACT
acrylic on paper
20.5 x 16 in. / 52 x 41 cm.
signed lower right; archival mat
Prov: Mira Goddard, Toronto, label verso
ESTIMATE: 1,200/1,500

JOHN HAROLD THOMAS SNOW

[b.1911] Canadian
ASA, CSGA, RCA
see *John Snow: Four Decades*, by M.Joslin, E.A.G., 1990; *Founders of the A.C.A.*, by V.Greenfield, pg.101 and pg.65; *Printmaking in Alberta 1945-1985*, by B.Cochran, pg.137 and *A.G.O.*, by the A.G.O., pg.425; included in *Jubilee Exhibition of Alberta Paintings*, by J.Nicoll, pg.28, Calgary Allied Art Centre, 1955; recent exhibition held at Collector's Gallery, Calgary for this important artist

1
4
0


BIRCH TREES
oil on canvas
29.75 x 36 in. / 76 x 91 cm. Dated: 1981
signed and dated lower right;
signed, titled and dated verso
Prov: purchased from Kathleen Laverty Gallery, Edmonton
ESTIMATE: 1,200/1,500

WILLIAM J. STAPLETON

[b.1916] Canadian
see *People in Struggle, the Life and Art of Bill Stapleton*, by C.Gervais, Penumbra Press, 1992

1
4
1

UNTITLED — PROTEST
oil on particle board
19 x 39 in. / 48 x 99 cm.
signed lower right; signed verso
Ref: included with lot *People in Struggle, the Life and Art of Bill Stapleton*, by C.Gervais
ESTIMATE: 1,000/1,200

**LIONEL MACDONALD STEPHENSON**


[1854-1907] Canadian
biography in *E.P.E.C.*, by R.Harper, pg.298 'executed numerous ... [views of] Winnipeg for troops during the Riel Rebellion'; biography and other examples in *150 Years of Art in Manitoba*, by FEckhardt, pg.100, W.A.G.1970; *Vistas of Promise, Manitoba 1874-1919*, by V.Berry, pg.28, W.A.G., 1987

1
4
2

FORT GARRY 1869
oil on Academy Board
12.5 x 18.25 in. / 32 x 46 cm.
signed with initials lower left; titled lower right;
some restoration noted
ESTIMATE: 1,500/2,000

WILLIAM LEWY LEROY STEVENSON

[1905-1966] Canadian
ASA
see *W.L.Stevenson, 1926-1966: Painter of Light/Painter of Darkness*, by M.Joslin, E.A.G., 1995; see *Founders of the A.C.A.*, by V.Greenfield, pg.103 for biography and another example of the artist's work pg.10; included in *Jubilee Exhibition of Alberta Paintings*, by J.Nicoll, pg.29, Calgary Allied Art Centre, 1955

1
4
3


FLORAL ON RED BACKGROUND
oil on canvas board
16 x 12 in. / 41 x 30 cm.
signed lower right; canvas laid down on canvas board;
some paint chips missing lower left
Ref: Edmonton Art Gallery
W.L. Stevenson exhibition label verso
Prov: Canadian Art Galleries, Calgary, label verso;
private collection, Southern Alberta
ESTIMATE: 900/1,200

SHARON THIRKETTLE

20th century Canadian
represented by Collector's Gallery, Calgary

1
4
4

IN THE PORCUPINES
acrylic on canvas
17.75 x 23.75 in. / 45 x 60 cm.
signed lower left; signed and dated verso
Prov: Collector's Gallery, Calgary, label verso
ESTIMATE: 800/1,000

TERRY TOMALTY

[b.1935] Canadian
listed in *Guide Vallee, III Edition*, by F.Vallee,
pub. Le Guide Vallee, pg.1060; artist listed
in *Artists in Canada — a Union List of Artist's
Files*, by S.Hasbury, pg.707

145 UNTITLED — TOWNSHIP VILLAGE

oil on canvas board
12 x 16 in. / 30 x 41 cm.
signed lower left
Prov: Kastel Gallery, West Mount, label verso
ESTIMATE: 400/600

CLAUDE TREMBLAY

20th century Canadian

146 CHARME FLERIQUE

oil on canvas
48 x 36 in. / 122 x 91 cm.
signed lower right; signed and titled verso; unframed
ESTIMATE: 800/1,000

A.C. VALENTINE

20th century

147 MORRAINE LAKE

oil on canvas board
8 x 10 in. / 20 x 25 cm. Dated: 1930 's
indistinctly signed lower right; bears name and title verso
Prov: Collector's Gallery, Calgary, label verso
ESTIMATE: 800/1,000

**DELL WARNER**

[b.1952] Canadian

148 AERIE

steatite sculpture
17 x 18.5 x 10. in. / 43 x 47 x 25 cm. Dated: 1988
signed and dated on bottom of sculpture;
sculpture done in two pieces
Prov: Bearclaw Gallery, Edmonton
ESTIMATE: 2,000/2,500

EMILY MARY BIBBENS WARREN

[1869-1956] Canadian
exhibition list in *M.M.F.A.*, pg.391 by E.McMann

149 UNTITLED — EARLY MORNING PADDLE

watercolour on paper
10.5 x 15.5 in. / 27 x 39 cm.
signed lower left
Prov: Collector's Gallery, Calgary, label verso
ESTIMATE: 800/1,000

**THOMAS HARRISON WILKINSON**

[1847-1929] Canadian
OSA
see *E.P.E.C.*, by R.Harper, pg.331 for biography

150 CANADIAN WEST

watercolour on paper
6.75 x 10 in. / 17 x 25 cm.
signed lower right; bears title on frame verso
Prov: Roberts and Son Artistic Framing, Toronto,
and Collector's Gallery, Calgary, labels verso
ESTIMATE: 600/800

KARL E. WOOD

[1944-1990] Canadian
feature artist, 1988 Calgary Stampede Art Show

151 WINTER SILENCE — WELLS GRAY PROV. PARK

oil on canvas
23.75 x 36 in. / 60 x 91 cm.
signed lower left; titled on stretcher verso
ESTIMATE: 1,400/1,800

152 CHURCHILL MOUNTAINS

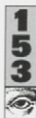
oil on canvas
18 x 23.75 in. / 46 x 60 cm.
signed lower left; titled on stretcher verso
ESTIMATE: 1,000/1,500

MARY EVELYN WRINCH

[1877-1969] Canadian

CPE, OSA, RCA

see *The Prints of Mary Wrinch*, by C.Dickman, Durham Art Gallery, 1980; *N.G.C. Vol.III*, by R.Hubbard, pg.336; *The Society of Canadian Painter-Etchers and Engravers in Retrospect*, by A.Oko, pg.78, Art Gallery of Hamilton, 1981; exhibition list in *R.C.A.A.*, pg.436 and *M.M.F.A.*, by E.McMann, pg.408

**INQUISITIVE PANSIES**

colour wood block on paper

7.25 x 7.25 in. / 18 x 18 cm. Dated: 1935

signed and titled along bottom; archival mat

Ref: *Canadian National Exhibition, Toronto ...* label verso;catalogue #23 in *The Prints of Mary Wrinch*

ESTIMATE: 700/900

LUCIENNE BOUCHER ZEGRAY

20th century Canadian

biography in *Guide Vallee, III Edition*, by

F.Vallee, pg.1104, pub. Le Guide Vallee, 1992;

artist listed on C.H.I.N. web site

www.chin.gc.ca/Resources/e_resources**THE FLAGS ON RUE STE. ANNE, QUEBEC**

pastel on paper

15 x 12 in. / 38 x 30 cm. Dated: 1998

signed lower left;

signed, titled and dated on artist's label verso

Prov: Collector's Gallery, Calgary, label verso

ESTIMATE: 700/900

Thank you for attending.

*Clients are reminded that the NEXT AUCTION is scheduled for **November 4, 2001**. Please contact the office early regarding consignments or if there are particular artists you are looking for.*



**SUNDAY MAY 6 AT 4:30 PM
(OR 15 min. after end of First Session)
SECOND SESSION, LOT 201 - 347**

Clients are invited to bid on the sheets up to 4:30 P.M. on Sunday, May 6. At this time, LEVIS will accept any verbal bids higher than what has been offered. The highest bidder will be deemed the purchaser of the lot.

PLEASE NOTE

Buyer's Premium: a Premium of 15% up to & including \$25,000, 10% thereafter will be added to the Hammer Price of all property sold. The Premium is payable by all purchasers.
Goods and Services Tax: G.S.T. of 7% will be charged on the total of the Hammer Price and on the Buyer's Premium.

Additional notes may be found at the front of the catalogue for prospective buyers.

CANADIAN SCHOOL

20th century Canadian

201

ART GALLERY OF ONTARIO — THE CANADIAN COLLECTION

10.25 x 8.5 in. / 26 x 22 cm. Dated: 1970
with dust jacket

Ref: one of the more important Canadian art collections and an important reference material in the field; published by McGraw-Hill, Toronto

together with

**NATIONAL GALLERY OF CANADA CATALOGUE;
VOLUME I: OLDER SCHOOLS**

book

10.25 x 8.25 in. / 26 x 21 cm. Dated: 1961
edited by RH. Hubbard; with dust jacket;
inscription on fly leaf

together with

**NATIONAL GALLERY OF CANADA CATALOGUE;
VOLUME II: MODERN EUROPEAN SCHOOLS**

book

10.25 x 8.25 in. / 26 x 21 cm. Dated: 1959
edited by RH. Hubbard; with dust jacket;
inscription on fly leaf

together with

**NATIONAL GALLERY OF CANADA CATALOGUE;
VOLUME III: CANADIAN SCHOOL**

book

10.25 x 8.25 in. / 26 x 21 cm. Dated: 1960
edited by RH. Hubbard; with dust jacket;
inscription on fly leaf

Ref: the last complete [A-Z] catalogue of the NGC collection and important reference material on the subject; published by the University of Toronto Press, Toronto

LOT OF FOUR — ESTIMATE: 300/400

WILFRED ROY ROLOFF BENY

[1924-1984] Canadian

CGP, CSPWC, RCA

see *N.G.C. Vol.1, A-F*, ed.C.Hill, pg.79; *A.G.O.*, by the A.G.O., pg.21 for biography and other examples; author and publisher of *An Aegean Note-book*, 1950

202

AN AEGEAN NOTE-BOOK #117/300
book

10.5 x 11.25 in. / 27 x 29 cm. Dated: 1950
signed and numbered by artist;

includes twenty lithographs; in portfolio case

Ref: includes invitation from

Eaton's Fine Art Gallery dated 1950

ESTIMATE: 250/350

GERARD BRENDER A BRANDIS

[b.1942] Canadian

biography in *The White Line — Wood Engravings in Canada since 1945*, by G. Brender a Brandis, pg.73, *The Porcupine Quill*, 1990

203

FLORA #9/75

book of wood engraving on paper

13.25 x 10.75 in. / 34 x 27 cm. Dated: 1980

signed and numbered;

in handmade portfolio case with 35 engravings

Ref: published by Branstead Press, Carlisle, ON

ESTIMATE: 350/450

WALTER JOSEPH PHILLIPS

[see biography Lot #108]

— ROGER H. BOULET

[see biography Lot #112]

204

**THE TRANQUILITY AND THE TURBULENCE —
THE LIFE AND WORK OF WALTER J. PHILLIPS**
book

13.5 x 16 in. / 34 x 41 cm. Dated: 1981

with dust cover; some handling marks

Ref: the trade edition of the larger catalogue raisonne of the artist's work; includes the expanded list of all of WJ Phillips' prints

Prov: published by M.B. Loates Publishing, Markham

ESTIMATE: 150/250

**MARINO ALT**

20th century Canadian

205 LE FORET BRULEE/RAVAGED BY FOREST FIRE,
PARK GASPE/SIE

oil on particle board

10 x 11.75 in. / 25 x 30 cm. Dated: 1972

signed and dated lower left; titled on artist's label verso

ESTIMATE: 200/300

206 CREPUSCLE/DUSK

oil on particle board

10 x 11.75 in. / 25 x 30 cm. Dated: 1972

signed and dated lower right; titled on artist's label verso

ESTIMATE: 200/300

SUNOL MUNOZ RAMOS ALVAR

[b.1935] Spanish

207 UNTITLED — THE VIOLINIST #11/200

colour lithograph on paper

19.25 x 15.25 in. / 49 x 39 cm.

signed and numbered along bottom

Ref: gift from the artist's instructor in Vancouver, Art Corey

Prov: private collection, Edmonton

ESTIMATE: 400/600

**CAROLINE ARMINGTON**

[1875-1939] Canadian

see *Caroline and Frank Armington — Canadian Painter-Etchers in Paris*, by N.Parke-Taylor, Art Gallery of Peel, 1990; *N.G.C. Vol.1, A-F*, ed.C.Hill, pg.17; *A.G.O.*, by the A.G.O., pg.7; biography in *Dictionnaire des Peintres, Sculpteurs et Graveurs*, by E.Benezit, Tome.1, pg.265

208 LA CHAPELLE NOTRE-DAME-DE-GRACE
A HONFLEUR #56/100

etching on paper

10.75 x 7 in. / 27 x 18 cm. Dated: 1922

13 x 9.75 in. / 33 x 25 cm. — Paper Size

signed with initials, dated and titled in plate;

signed and numbered along bottom; lot includes copy

of book *Caroline and Frank Armington*, by M.Parke-TaylorRef: catalogue *CA#286* in *Caroline and Frank Armington*,

by N.Parke-Taylor, ed:114, three states

Prov: purchased from the estate of the artist

ESTIMATE: 150/250

209 PENICHES ET PONT NEUF, PARIS [NO.2] #57/100

etching on paper

5 x 6.75 in. / 13 x 17 cm. Dated: 1934

7 x 9.25 in. / 18 x 23 cm. — Paper Size

signed, dated and titled in plate; signed and numbered

along bottom; lot includes copy of book

Caroline and Frank Armington, by M.Parke-TaylorRef: catalogue *CA#514* in *Caroline and Frank Armington*,

by N.Parke-Taylor, ed:102, one state

Prov: purchased from the estate of the artist

ESTIMATE: 150/250

**WILLIAM WALTON ARMSTRONG**

[b.1916] Canadian

biography and another example in *N.G.C., Vol.III*, by R.Hubbard, pg.4; exhibition list in *M.M.F.A.*, by E.McMann, pg.11; biography in *Dict. of Canadian Artists*, by C.MacDonald, Vol.1, pg.16

210 UNTITLED — PORTRAIT OF A LADY

oil on canvas

30 x 24 in. / 76 x 61 cm.

signed lower right; unframed

Prov: private collection, Calgary

ESTIMATE: 300/400



**CAVEN ATKINS**

[b.1907] Canadian
CGP, CSGA, CSPWC, FCA
see *Caven Atkins, The Winnipeg Years*, by T.Fraser, Art Gallery of Windsor, 1987; biography and other examples in *A.G.O.*, by the A.G.O., pg.9; *Images of the Land, 1919-1945*, by P.Ainslie, pg.78; exhibition list in *M.M.F.A.*, by E.McMann, pg.12; biography in *Dict. of Canadian Artists*, by C.MacDonald, Vol.1, pg.18

- 2**
1
1
MOUNTAIN VISTA
wood block on paper
6.5 x 4.75 in. / 17 x 12 cm. Dated: 1941 ca.
unsigned; archival mat
Ref: included in magazine *Maritime Art*, 1941;
illustrated in *Images of the Land*, pg.114
Prov: private collection, Calgary
ESTIMATE: 100/150

WALTER JAMES BABER

[1856-1924] Canadian

- 2**
1
2
UNTITLED — THE MINING CAMP
watercolour on paper
6 x 11 in. / 15 x 28 cm.
signed with initials lower right
Prov: Collector's Gallery, Calgary, label verso
ESTIMATE: 400/500

K.M. BALLANTYNE

20th century

- 2**
1
3
UNTITLED — WOOD NYMPHS
linoblock on paper
7 x 8 in. / 18 x 20 cm. Dated: 1930 ca.
unsigned; archival mat
Prov: private collection, Calgary
ESTIMATE: 100/150

ALFRED C. & BARBARA LEIGHTON - BARLEIGH

Canadian

see *Printmaking in Alberta 1945-1985*, by B.Cochran, pg.100 as well as *Images of the Land, 1919-1945*, by P.Ainslie, pg.93, under Barbara Leighton, for biography and other examples of the collaborative work of these two artists

- 2**
1
4
MT. ASSINIBOINE
colour wood block on paper
11 x 14.75 in. / 28 x 37 cm.
unsigned; with certificate of authenticity
from the Leighton Foundation; archival mat
Prov: private collection, Alberta
ESTIMATE: 300/400

MAXWELL BENNETT BATES

[1906-1980] Canadian
ASA, CGP, CSPWC, RCA
see *Maxwell Bates, A Retrospective*, by I.Thom, A.G.G.V.; *Maxwell Bates: Landscapes 1948-1978*, by N.Townshend, Medicine Hat Art Gallery 1982; *Maxwell Bates, Biography of an Artist*, by K.Snow, U. of Calgary Press; wrote and illustrated *A Wilderness of Days*, by Maxwell Bates, Sono Nis Press, 1978; ; *N.G.C. Vol.1, A-F*, ed.C.Hill, pg.62; biography in *Benezit*, Tome.1, pg.506

- 2**
1
5
UNTITLED — TWO FIGURES
monoprint on paper
11.5 x 9 in. / 29 x 23 cm. Dated: 1976
signed and dated lower right; archival mat
Prov: Kathleen Laverty Gallery, Edmonton,
stamp on backing
ESTIMATE: 900/1,200

- 2**
1
6
FIGURES #2/9
colour lithograph on paper
18 x 8 in. / 46 x 20 cm.
signed, titled and numbered along bottom; archival mat
Prov: D&E Lake Fine Arts, Toronto, label verso
ESTIMATE: 600/700





BATES continued

217 TWO BOYS #1ST STATE 1/2
lithograph on paper
11.75 x 15.25 in. / 30 x 39 cm. Dated: 1956
signed, titled, dated and numbered along bottom;
archival mat
Prov: Kathleen Laverty Gallery, Edmonton,
stamp on backing
ESTIMATE: 300/500

218 UNTITLED — FEMALE FIGURE STUDY,
ARM OUTSTRETCHED
graphite on paper
15 x 8 in. / 38 x 20 cm. Dated: 1953
signed and dated lower left; unframed
Prov: private collection, Manitoba
ESTIMATE: 250/350

219 UNTITLED — FEMALE FIGURE STUDY, ARM ON HIP
graphite on paper
15.5 x 8.25 in. / 39 x 21 cm. Dated: 1953
signed and dated lower right; unframed
Prov: private collection, Manitoba
ESTIMATE: 250/350

220 UNTITLED — MAN SEATED
ink on paper
16 x 8 in. / 41 x 20 cm.
signed lower centre; archival mat; unframed
Prov: private collection, Manitoba
ESTIMATE: 200/300



221 AUG. 26
graphite on paper
7 x 11 in. / 18 x 28 cm.
titled upper left; various colour notations;
sketch of boat verso; oil stain upper left corner; unframed
together with
FERMAIN BAY, AUG. 20
graphite on paper
4.5 x 9.5 in. / 11 x 24 cm.
titled lower right; small sketch verso; oil stains in upper
right and left corner; unframed
Prov: private collection, Manitoba
LOT OF TWO — ESTIMATE: 200/300

HENRY ERIC BERGMAN

[1893-1958] Canadian
CPE, CSPWC, MSA, RCA
see *Transformation of Visions, The Works of
H. Eric Bergman*, by N. Dillow, Winnipeg Art
Gallery, 1983; *Images of the Land, 1919-1945*,
by P. Ainslie, pg. 79; *N.G.C. Vol. 1, A-F*, ed. C. Hill,
pg. 84

222 THE OLD GATE
wood block on paper
4 x 5.5 in. / 10 x 14 cm.
signed with initials in block lower right; signed and titled
along bottom; tipped on in upper corners; unframed
ESTIMATE: 400/500

223 UNTITLED — WILD ROSE
wood block on paper
4 x 3 in. / 10 x 8 cm.
signed with initials in block lower right;
signed below image; archival mat; glazed with Denglas
ESTIMATE: 400/500



JOYCE BETTS

20th century

224 BUFFALO SHIELD # 31/150
mixed media on papercast
19 x 19 in. / 48 x 48 cm. Dated: 1985
signed and numbered along bottom; in plexiglass box
ESTIMATE: 600/800

**JAMES JERRIS BLOMFIELD**

[1872-1951] Canadian biography in *Dict. of Canadian Artist*, by C.MacDonald, Vol.1pg.51; biography and another example in *Printmaking in British Columbia 1889-1983*, by N.Tuele, 1984, A.G.G.V.

225 THE LIONS OF CAPILANO, VANCOUVER, BC
oil on canvas board
7 x 9 in. / 18 x 23 cm.
signed lower centre, titled on paper attached to verso;
unframed

together with

UNTITLED — THE LIONS OF CAPILANO

oil on canvas board
7 x 9 in. / 18 x 23 cm.
unsigned; unframed

together with

UNTITLED — THE LIONS OF CAPILANO

oil on canvas board
7 x 9 in. / 18 x 23 cm.
unsigned; unframed

LOT OF THREE — ESTIMATE: 600/800

226 THE LIONS OF CAPILANO VANCOUVER B.C.
monoprint and etching on paper
3.25 x 5.5 in. / 8 x 14 cm.
signed, titled and indistinctly inscribed along bottom
Ref: see oil painting of same subject in auction
Prov: Collector's Gallery, Calgary, label verso
ESTIMATE: 200/300



227 RUNNING FREE FOR HOME
watercolour on paper
5.5 x 4.5 in. / 14 x 11 cm.
signed lower left; titled verso; unframed
ESTIMATE: 200/300

228 RUNNING FREE
watercolour on paper
4.75 x 3.75 in. / 12 x 10 cm.
signed lower left; titled on mat; unframed
ESTIMATE: 200/300

JORDI BONET

[1932-1979] Canadian
ARCA

see *Hommage a Jordi Bonet*, by Musee du Quebec, 1980; for biography and other example see *Guide Vallee, III Edition*, by F.Vallee, pub. Le Guide Vallee, pg.218; biography in *Dict. of Canadian Artists*, by C.MacDonald, Vol.1pg.addendum; exhibition list in *R.C.A.A.* pg.40 and *M.M.F.A.*, pg.37, by E.McMann;

229 UNTITLED — TWO FACES #11/50
colour relief print on paper
10.5 x 10 in. / 27 x 25 cm.
12 x 11 in. / 30 x 28 cm. — Paper Size
signed and numbered along bottom; unframed
Prov: private collection, Montreal
ESTIMATE: 200/300

F.W. BRANDER

20th century N.American

230 SOUTH INGONISH CAPE BRETON IS. N.S.
watercolour on paper
9.5 x 15.5 in. / 24 x 39 cm.
titled on mat; signed on paper attached verso
Prov: Collector's Gallery, Calgary, label verso
ESTIMATE: 300/400

ERROL BRIMACOMBE

[b.1947] Canadian
lives in Chilliwack, British Columbia

231 UNTITLED — CONTEMPLATION
watercolour on paper
13 x 19.75 in. / 33 x 50 cm.
signed lower right
ESTIMATE: 350/450

232 UNTITLED — POPPIES
watercolour on paper
13 x 20 in. / 33 x 51 cm.
signed lower right
ESTIMATE: 350/450

RICHARD CALVER

20th century Canadian

233 BELL #19/50
colour wood block on paper
19.5 x 13.5 in. / 50 x 34 cm.
signed, titled and numbered upper right; archival mat
ESTIMATE: 400/500



ALFRED JOSEPH CASSON

[1898-1992] Canadian
CSPWC, CGP, OSA, RCA

see *A.J. Casson*, by P.Duval, Roberts Gallery, 1975; *A.J. Casson*, by J.Murray, Art Gallery of Windsor, 1978; *A.J. Casson: His Life and Works / A Tribute*, by P.Duval, Cerebus, 1980; *A.J. Casson, My Favourite Watercolours 1919 to 1957*, by P.Duval, Cerebus, 1982; *A.J. Casson: Early Works*, by I.Thom, McMichael Collection, 1984; *N.G.C. Vol.1, A-F*, ed.C.Hill, pg.180; *A.G.O.*, by the A.G.O., pg.63; exhibition list in *R.C.A.A.*, by E.McMann, pg.65

234 UNTITLED — AUTUMN DAY
colour silkscreen on paper
10 x 8.25 in. / 25 x 21 cm.
signed in screen lower right; archival mat
Prov: Collector's Gallery, Calgary, label verso
ESTIMATE: 500/600



56N UNTITLED — RED HEADED DUCKS
colour silkscreen on paper
8.5 x 10.25 in. / 22 x 26 cm.
signed below image; archival mat
Prov: Collector's Gallery, Calgary, label verso
ESTIMATE: 500/600

MARC CHAGALL

[1887-1985] Rus/French
catalogues raisonnés include *Chagall Lithographie* by Fernand Mourlot and Mourlot, Monte Carlo, 1960-86; biography in *Dictionnaire des Peintres, Sculpteurs et Graveurs*, by E.Benezit, Vol.2, pg.638

63N UNTITLED — FIGURE AND DONKEY
colour lithograph on paper
12.25 x 9.5 in. / 31 x 24 cm. Dated: 1970 ca.
unsigned
Ref: bear note verso 'Lithographie originale pour XXe Siecle n.34 [Mourlot, imprimeur, Paris] 1970'

EDITH GRACE [LAWSON] COOMBS

[1890-1986] Canadian
OSA

see *E.Grace Coombs Artist*, by L.Pierce, Ryerson Press, 1949; included in the Hart House Collection, University of Toronto; exhibition list in *R.C.A.A.*, by E.McMann, pg.81; see *A Dict. of Canadian Artists*, by C.MacDonald, Vol.1 pg.143 for biography; *M.M.F.A.*, by E.McMann, pg.79

237 UNTITLED — DAFFODILS
watercolour on paper
7.75 x 7 in. / 20 x 18 cm.
unsigned; archival mat; glazed with Denglas
Prov: Master's Gallery, Calgary
ESTIMATE: 300/400

E. CUMMINGS

20th century

238 UNTITLED — ALPINE LAKE
oil on paper board
8 x 10 in. / 20 x 25 cm. Dated: 1953 ca.
signed lower left; bears inscription
'Delphine, gift from Post Office Staff, Xmas 1953' verso
ESTIMATE: 350/450



RODOLPHE DUGUAY

[1891-1973] Canadian
see *N.G.C. Vol.1, A-F*, ed.C.Hill, pg.280; *Print-making in Quebec, 1900-1950*, by D.Martin, pg.70, Musée du Québec, 1988; *Images of the Land, 1919-1945*, by P.Ainslie, pg.67

239 L'ANNONCE DU PRINTEMPS #28/100
colour relief print on paper
7.75 x 9 in. / 20 x 23 cm.
signed with initials in block lower left;
signed, titled and numbered along bottom
ESTIMATE: 250/350

240 L'ETE
colour relief print on paper
4.75 x 6 in. / 12 x 15 cm.
signed with initials in block lower left;
signed and titled along bottom
ESTIMATE: 250/350

**DUGUAY continued**

- 2** CHRIST'S VIGIL
4 wood block on paper
1 3.25 x 3.5 in. / 8 x 9 cm. Dated: 1935 ca.
 signed with initials in block lower right;
 signed along bottom; archival mat
 Ref: illustrated in *Images of the Land*, page 127
 ESTIMATE: 250/350

HOWARD S. EDWARDS

[b.1886] Canadian
 exhibition list in *R.C.A.A.*, by E.McMann, pg.116

- 2** UNTITLED — WINTER BIRCHES
4 oil on canvas
2 21 x 25 in. / 53 x 64 cm.
 signed lower right
 Prov: purchased from the artist's wife
 ESTIMATE: 900/1,200



- 2** UNTITLED — SANDY BEACH
4 oil on canvas
3 20 x 26 in. / 51 x 66 cm.
 signed lower right; some restoration noted
 Prov: purchased from the artist's wife
 ESTIMATE: 900/1,200

JOHN KENNETH ESLER

[b.1933] Canadian
 ASA, CSGA, CPE, MSA, RCA
 see *35 Years and 15 Minutes*, prints by John
 Kenneth Esler, by S.Ford, Nickle Arts Museum,
 1994; *Founders of the A.C.A.*, by V.Greenfield,
 pg.80 and *Printmaking in Alberta 1945-1985*,
 by B.Cochran, pg.66 as well as *N.G.C. Vol.1, A-F*,
 ed.C.Hill, pg.300; *Dict. of Canadian Artists*,
 by C.MacDonald, Vol.1 pg.192

- 2** THE LAST FLIGHT #31/50
4 colour etching on paper
4 23.75 x 17.5 in. / 60 x 44 cm. Dated: 1976
 signed, titled, dated and numbered along bottom
 ESTIMATE: 250/350

- 2** FATIMA #8/50
4 colour etching on paper
5 16 x 16.5 in. / 41 x 42 cm. Dated: 1979
 signed, titled, dated and numbered along bottom
 ESTIMATE: 250/350

- 2** SIDE ROAD #48/50
4 colour etching on paper
6 15 x 13.5 in. / 38 x 34 cm. Dated: 1977
 signed, titled, dated and numbered along bottom;
 minor water damage on mat
 ESTIMATE: 250/350

BARKER FAIRLEY

[1887-1986] Canadian
 RCA

see *Barker Fairley*, by P.Duval, Marianne
 Friedland Gallery, 1980; *A.G.O.*, by the A.G.O.,
 pg.109 for biography; in the famous photo-
 graph of the Group of Seven at the Arts
 and Letters Club, Barker Fairley is seated at
 the end of the table; *Barker Fairley Portraits*,
 by B.Fairley, pub. Methuen, 1980

- 2** UNTITLED — WAUPOOS #189/300
4 lithograph on paper
7 3.75 x 9.75 in. / 10 x 25 cm. Dated: 1980 ca.
 11.25 x 11 in. / 29 x 28 cm. — Paper Size
 signed and numbered along bottom; unframed
 Ref: included as part of *Barker Fairley*, by P.Duval, limited
 edition book published by Marianne Friedland Gallery;
 oil painting of the same subject reproduced pg.131
 ESTIMATE: 200/250

- 2** UNTITLED — RISING ROAD #189/300
4 lithograph on paper
8 7.75 x 9.75 in. / 20 x 25 cm. Dated: 1980 ca.
 11.25 x 11 in. / 29 x 28 cm. — Paper Size
 signed and numbered along bottom; unframed
 Ref: included as part of *Barker Fairley*, by P.Duval, limited
 edition book published by Marianne Friedland Gallery;
 oil painting of the same subject reproduced pg.132
 ESTIMATE: 200/250

RICHARD FLOETHE

[b.1901] American
 biography available at
www.lib.usm.edu/~degrum/newreg.htm#

- 2** UNTITLED — BLUE DRESS
4 colour linoblock on paper
9 9.5 x 7.25 in. / 24 x 18 cm. Dated: 1934 ca.
 signed with initial in block upper right; archival mat
 Prov: private collection, Calgary
 ESTIMATE: 200/300



**ALEC JOHN GARNER**

[1897-1995] Canadian
ASA

biography in *Dict. of Canadian Artists*, by C.MacDonald, Vol.2 pg.253; exhibition list in *R.C.A.A.*, by E.McMann, pg.144

250 KOOTENAY LAKE FROM PROCTER BEACH

oil on paper board
12 x 16 in. / 30 x 41 cm. Dated: 1963
signed lower left;
signed, titled and dated on artist's label verso
Prov: private collection, Swift Current
ESTIMATE: 150/250

HENRY GEORGE GLYDE

[see biography Lot #34]

251 UNTITLED — NATIVITY SCENE

linoblock on paper
4.75 x 3.5 in. / 12 x 9 cm.
unsigned; archival mat
ESTIMATE: 200/300

252 UNTITLED — THE HOLY FAMILY

linoblock on paper
4 x 3 in. / 10 x 8 cm.
unsigned; unframed
ESTIMATE: 150/200

WILLIAM FREDERICK GEORGE GODFREY

[1884-1971] Canadian
CPE

biography and other examples in *N.G.C. Vol.2, G-K*, ed.C.Hill, pg.36; *A.G.O.*, by the A.G.O., pg.139; *A Dict. of Canadian Artists*, by C.MacDonald, Vol.2, pg.284 for biography; exhibition list in *R.C.A.A.*, pg.150 and *M.M.F.A.*, by E.McMann, pg.146

352 THE VALLEY FARM

wood block on paper
10 x 11.75 in. / 25 x 30 cm.
signed, titled and inscribed 'No. 10' along bottom;
archival mat
ESTIMATE: 350/450

254 THE RUSTIC BRIDGE, MT. HAMILTON

wood block on paper
7.75 x 8.5 in. / 20 x 22 cm.
signed and titled along bottom; archival mat
ESTIMATE: 350/450

THOMAS GARLAND GREENE

[1875-1955] Canadian

CPE, CSGA, CSPWC, OSA
biography and other examples in *N.G.C. Vol.2, G-K*, ed.C.Hill, pg.56 and *A.G.O.*, by the A.G.O., pg.144; exhibition list in *R.C.A.A.*, by E.McMann, pg.157; founding member of the C.S.P.W.C.; *Robson*, pg.126; *Colgate*, pg.66

552 UNTITLED — SUMMER FOREST LANDSCAPE

oil on canvas board
10 x 14 in. / 25 x 36 cm.
signed lower right
ESTIMATE: 400/500

652 UNTITLED — SKIER

colour pencil on paper
13.75 x 8.5 in. / 35 x 22 cm.
unsigned; archival mat
Prov: purchased from the estate of the artist;
D&E Lake Fine Arts, Toronto, label verso
ESTIMATE: 350/450

752 UNTITLED — TWO FIGURE STUDIES

graphite on paper
6 x 4 in. / 15 x 10 cm.
signed with initials lower right
ESTIMATE: 100/150

LAWREN STEWART HARRIS

[1885-1970] Canadian
CGP, FCA, OSA

see *Lawren Harris, Paintings 1910-1948*, by S.Key, A.G.T., 1948; *Lawren Harris Retrospective Exhibition*, by I.McNairn, N.G.C., 1963; *Lawren Harris*, by B.Harris, MacMillan Co. 1969; *Lawren S. Harris: Urban Scenes and Wilderness Landscapes*, by J.Adamason, A.G.O. 1978; *Atma Buddhi Manas, The Later Work of Lawren S. Harris*, by D.Reid, A.G.O., 1985; *Lawren Harris: North by West*, by C.Jackson, Glenbow, 1991; *Light for a Cold Land*, by P.Larisey, Dundurn Press, 1993; *N.G.C. Vol.2, G-K*, ed.C.Hill, pg.89; *A.G.O.*, by the A.G.O., pg.154

652 MALIGNE LAKE, JASPER PARK, ALBERTA

relief print on paper
5.5 x 7 in. / 14 x 18 cm. Dated: 1924 ca.
signed lower right; archival mat
Ref: included in a portfolio of the Group of Seven images published by Rous and Mann; ink drawing from the NGC collection illustrated *The Group of Seven* pg.168
ESTIMATE: 600/800



**TED HARRISON**

[b.1926] Canadian

see *The Last Horizon* by T.Harrison, Merritt Publishing, 1980; biography and another example in *The Yukon Permanent Collection*, by the Friends of the Gallery, pg.10, Yukon Tourism; *Dict. of Canadian Artists*, by C.MacDonald, Vol.2 addendum for biography

952 FLOATING GULLS #29/220

colour silkscreen on paper

24 x 17.75 in. / 61 x 45 cm. Dated: 1994

signed, titled, dated and numbered along bottom; archival mat

Prov: West End Gallery, Edmonton, label verso

ESTIMATE: 300/400

962 BALL GAME #179/200

colour silkscreen on paper

16.25 x 24 in. / 41 x 61 cm. Dated: 1991

signed, titled, dated and numbered along bottom; archival mat

Prov: West End Gallery, Edmonton, label verso

ESTIMATE: 300/400

**162** BALLOONING #30/200

colour silkscreen on paper

18.25 x 14 in. / 46 x 36 cm. Dated: 1993

27.5 x 22.25 in. / 70 x 57 cm. — Paper Size

signed, titled, dated and numbered along bottom; unframed

ESTIMATE: 250/350

ANNE SMITH HOOK

[1900-1978] Canadian

CPE, FCA

see *A Dict. of Canadian Artists*, by C.MacDonald, Vol.2 pg.463 for biography and *The Society of Canadian Painter-Etchers and Engravers in Retrospect*, by A.Oko, pg.75, [C.P.E. president 1967-68]

262 COMMAND PERFORMANCE

etching on paper

10.75 x 5.25 in. / 27 x 13 cm.

signed with initials in plate lower right;

signed and titled along bottom; archival mat

together with

SILVERSEED GOURD #1/40

colour wood block on paper

16.5 x 7.25 in. / 42 x 18 cm.

signed, titled and numbered along bottom; archival mat

Prov: private collection, Calgary

LOT OF TWO — ESTIMATE: 150/200**NICHOLAS HORNYANSKY**

[1898-1965] Canadian

CPE, CSGA, OSA, ARCA

biography and other examples in *N.G.C. Vol.2, G-K*, ed.C.Hill, pg.149; *A.G.O.*, by the A.G.O., pg.195; *A Dict. of Canadian Artists*, by C.MacDonald, Vol.2, pg.470; exhibition list in *R.C.A.A.*, pg.194 and *M.M.F.A.*, by E.McMann, pg.180;

263 SAINT JAMES CHURCH, VANCOUVER B.C.

colour etching on paper

7.25 x 6.25 in. / 18 x 16 cm.

signed and titled along bottom; printed description verso;

archival mat

ESTIMATE: 300/400

**264** LIBRARY TOWER, PARLIAMENT, OTTAWA

colour etching on paper

5.5 x 4.5 in. / 14 x 11 cm.

signed and titled along bottom

Prov: private collection, Winnipeg

ESTIMATE: 200/300

**VICTORIA HUTSON HUNTLEY**

[1900-1971] American
biography available at
<http://www.stcharles.lib.il.us/low/artjul99.htm>

- 265** UNTITLED — GARDENIA
lithograph on paper
7.25 x 6.75 in. / 18 x 17 cm. Dated: 1931
signed and dated lower right; archival mat
Prov: private collection, Calgary
ESTIMATE: 150/200

ROBERT NEWTON HURLEY

[1894-1980] Canadian
see *Robert Newton Hurley, A Notebook*, by G.Moppett, Mendel Art Gallery, 1986; *Sky Painter; the Story of Robert Newton Hurley* by J.Swanson, Western Producer Book Service, 1973; *Dict. of Canadian Artists*, by C.MacDonald, Vol.2 pg.493; biography in *Biographical Dict. of Saskatchewan Artists — Men*, by M.Newman, pg.123, Fifth House Pub., 1994

- 266** UNTITLED — PRAIRIE SKY
watercolour on paper board
8.5 x 9.5 in. / 22 x 24 cm.
signed lower left; archival mat
Prov: Collector's Gallery, Calgary, label verso
ESTIMATE: 450/550

E. HUTCHINS

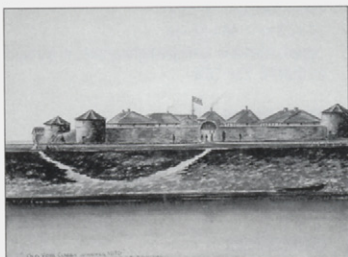
20th century Canadian
most of E. Hutchins' work seems to be from the 1920's and appears to be B.C. subject matter; this is probably a different artist than Ernest John Hutchins who lived in Winnipeg and died in 1912

- 267** UNTITLED — MOUNTAIN STREAM
watercolour on paper
4.5 x 8.5 in. / 11 x 22 cm.
signed lower right
Prov: Collector's Gallery, Calgary, label verso
ESTIMATE: 200/250

ERNEST JOHN HUTCHINS

[? - 1912] Canadian
biography and other examples in *Canadian Watercolours and Drawings in the R.O.M.*, by M.Allodi, Vol.1, R.O.M., 1974; listed in *150 Years of Art in Manitoba* by F.Eckhardt, W.A.G. 1970; see *Vistas of Promise, Manitoba 1874-1919*, by V.Berry, W.A.G., 1987, author notes artist died in a street car accident in April of 1912; some paintings of mountains possibly done from photographs — see *R.O.M.*; some signed 'E.Hutchins' and some dating from the early 1920's — possibly another artist by the same name and initial

- 268** OLD FORT GARRY, WINNIPEG, 1870
[DEMOLISHED 1882]
watercolour on paper
9.75 x 12.75 in. / 25 x 32 cm.
signed and titled lower left; laid down on backing
Prov: Collector's Gallery, Calgary, label verso
ESTIMATE: 400/600

**INUIT****AKENESIE / NOVALINGA**

[1910-1987] Canadian
Akensie Novalinga listed in *Inuit Artist Index — January 1990*, pg.134, pub. by Indian and Northern Affairs Canada; the artist lived in Povungnituk

- 269** CHASING GEESE #49/50
colour stencil print on paper
11 x 15.75 in. / 28 x 40 cm. Dated: 1986
dated, numbered and inscribed in syllabics along bottom;
embossed chop lower left
ESTIMATE: 300/400

ALIKNAK / KLENGENBERG

20th century Canadian

- 270** IMAOTILIK #AP
colour stencil print on paper
13 x 14 in. / 33 x 36 cm. Dated: 1988
signed, titled, dated and numbered along bottom;
Holman embossed chop lower right, archival mat
ESTIMATE: 200/300

ALIKNAK / NIGIYOK

20th century Canadian

- 271** TOKOYOT TOPINGMI #AP
colour relief print on paper
15.75 x 17.25 in. / 40 x 44 cm. Dated: 1988
signed, titled, dated and numbered along bottom;
Holman embossed chop lower right; archival mat
ESTIMATE: 350/450

**ABRAHAM ANGHIK**

[b.1951] Canadian
artist listed in *Inuit Artist Index — January 1990*, pg.19, pub. by Indian and Northern Affairs Canada; the artist lives on Salt Spring Island

- 2** ANGATKRO MANIFEST OF INUIT SOUL #87/300
7 colour silkscreen on paper
2 18 x 23 in. / 46 x 58 cm.
 signed, titled and numbered along bottom; archival mat
 ESTIMATE: 250/350

GEORGE AUKSAQ

[b.1963] Canadian
artist listed in *Inuit Artist Index — January 1990*, pg.39, pub. by Indian and Northern Affairs Canada; the artist lives in Igoolik

- 2** DRUM DANCER
7 light green soapstone sculpture with bone
3 12.75 x 7.5 x 4. in. / 32 x 19 x 10 cm. Dated: 1990
 signed with syllabics and dated on bottom of sculpture
 ESTIMATE: 600/800

TOM BOURKE

20th century Canadian

- 2** A SUCCESSFUL HUNT
7 soapstone and bone sculpture
4 11 x 16 x 13.5 in. / 28 x 41 x 34 cm. Dated: 1995
 signed with initials, dated and inscribed 'Fort Smith, NWT'
 on bottom of sculpture; nine pieces total
 ESTIMATE: 600/800

ISHLUKTAK ELIZAPEE

[b.1925] Canadian
artist listed in *Inuit Artist Index — January 1990*, pg.71, pub. by Indian and Northern Affairs Canada; the artist lives in Pangnirtung

- 2** DREAM BIRD #11/50
7 colour silkscreen on paper
5 15.5 x 18.25 in. / 39 x 46 cm. Dated: 1982
 signed with syllabics, titled, dated and numbered along
 bottom; archival mat
 ESTIMATE: 400/500

BART HANNA

[b.1948] Canadian
artist listed in *Inuit Artist Index — January 1990*, pg.56, pub. by Indian and Northern Affairs Canada; the artist lives in Igoolik

- 2** SHAMAN
7 dark green soapstone with white stone mask
6 6 x 15.25 x 2.25 in. / 15 x 39 x 6 cm. Dated: 1997
 signed and dated on base; bears certificate of authenticity
 ESTIMATE: 400/500

MINA IQALUG

[b.1929] Canadian
artist listed in *Inuit Artist Index — January 1990*, pg.67, pub. by Indian and Northern Affairs Canada; the artist lives in Sanikiluaq

- 2** HUNTER
7 light green soapstone with horn harpoon
7 13 x 5.5 x 4.75 in. / 33 x 14 x 12 cm.
 with Government of Canada certificate
 ESTIMATE: 600/800

JOSEPH KITEKUDLAK

[b.1945] Canadian
biography in *Biographies of Inuit Artists, Vol.2*,
by Canadian Arctic Producers

- 2** TWO BEARS FIGHTING
7 grey soapstone sculpture
8 8 x 13 x 10. in. / 20 x 33 x 25 cm.
 signed and inscribed 'Holman, NWT'
 on bottom of sculpture
 ESTIMATE: 1,000/1,200

**MOSES KOONARK**

20th century Canadian

- 2** COUPLE
7 light green soapstone sculpture
2 10 x 9 x 6.5 in. / 25 x 23 x 17 cm. Dated: 1982
 with Government of Canada certificate; from Pond Inlet
 ESTIMATE: 600/800

MOSES NAKOQEE

20th century Canadian



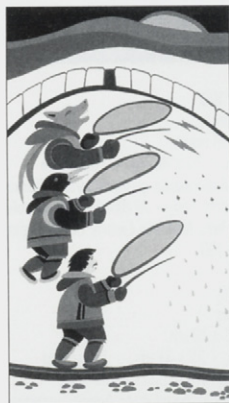
- UNTITLED — WALRUS
 soapstone sculpture
 8 x 18.5 x 11. in. / 20 x 47 x 28 cm. Dated: 1997
 signed, dated and inscribed 'James Bay'
 on bottom of sculpture
 Prov: Bearclaw Gallery, Edmonton
 ESTIMATE: 1,250/1,500

**DAVID RUBEN PIQTOUKUN**

[b.1950] Canadian
artist listed in *Inuit Artist Index — January 1990*, pg.160, pub. by Indian and Northern Affairs Canada; the artist lives in Toronto and is represented by Galerie Vincent, Ottawa

281

AS THE SUN SETS #56/200 [A]
colour silkscreen on paper
24.75 x 14.25 in. / 63 x 36 cm.
signed, titled and numbered along bottom;
embossed chop lower left; archival mat
Ref: from *Symbols of Survival* portfolio of three prints
published by Paulatuk Fine Art;
18 colours in edition of 200 plus 25 APs
ESTIMATE: 750/1,000



282

A BOUNTIFUL SUPPLY #56/200 [B]
colour silkscreen on paper
25 x 14.5 in. / 64 x 37 cm.
signed, titled and numbered along bottom;
embossed chop lower left; archival mat
Ref: from *Symbols of Survival* portfolio of three prints
published by Paulatuk Fine Art;
18 colours in edition of 200 plus 25 APs
ESTIMATE: 750/1,000

283

THE SHAMAN'S DREAM #56/200 [C]
colour silkscreen on paper
24.75 x 14.5 in. / 63 x 37 cm.
signed, titled and numbered along bottom;
embossed chop lower left; archival mat
Ref: from *Symbols of Survival* portfolio of three prints
published by Paulatuk Fine Art;
18 colours in edition of 200 plus 25 APs
ESTIMATE: 750/1,000

LIPA PITSIULAK

[b.1943] Canadian
the artist resides in Pangnirtung; biography in
Biographies of Inuit Artists, Vol.2, by Canadian
Arctic Producers; listed *Union List*, pg.560

284

ANIMALS OF OUR LAND #II/XXV
colour lithograph on paper
16.5 x 21 in. / 42 x 53 cm. Dated: 1979
signed, titled, dated and numbered along bottom;
unframed
Ref: part of *Twentieth Anniversary 1959/1979*
Gallery Moos Limited portfolio
ESTIMATE: 300/500

RALPH PORTER

[b.1942] Canadian
artist resides in Gjoa Haven

285

MAN SPIRIT
dark green soapstone sculpture
13 x 8 x 7.5 in. / 33 x 20 x 19 cm. Dated: 1990
with Government of Canada certificate; from Gjoa Haven
ESTIMATE: 1,000/1,500

INUIT SCHOOL

20th century Canadian

286

UNTITLED — INUIT LIFE
whale bone on stone base
5.5 x 2.5 x 2.5 in. / 14 x 6 x 6 cm.
with Government of Canada certificate
ESTIMATE: 400/500

287

UNTITLED — ELEMENTS OF THE ARCTIC
whale bone on stone base
6 x 3 x 1.75 in. / 15 x 8 x 4 cm.
with Government of Canada certificate
ESTIMATE: 400/500

ARNOLD ISBISTER

[b.1950] Canadian
born northwest of Prince Albert, the artist now
lives in Saskatoon

288

LISTEN TO US
acrylic on paper
20.5 x 28.5 in. / 52 x 72 cm. Dated: 1996
signed and dated lower right; archival mat
Prov: Bearclaw Gallery, Calgary
ESTIMATE: 400/600

**ALEX JANVIER**

[b.1935] Canadian
RCA

see *The Art of Alex Janvier: His First Thirty Years, 1960-1990*, by L.Martin, Thunder Bay Art Gallery, 1993; as well *Founders of the A.C.A.*, by V.Greenfield, pg.24 and 86; *Time for Dialogue*, by J.Cardinal-Schubert, pg.17, Calgary Aboriginal Awareness Society, 1992; *Dict. of Canadian Artists*, by C.MacDonald, Vol.3 pg.540 for biography; *Artists of Alberta*, by S.Baker, pg.30, U. of A. Press, 1980; represented by Wallace Galleries, Calgary

989N GOOD SOIL ROAD #11/XXV

colour silkscreen on paper
15.5 x 22 in. / 39 x 56 cm.
signed, titled and numbered along bottom; unframed
Ref: part of *Twentieth Anniversary 1959/1979*
Gallery Moos Limited portfolio
ESTIMATE: 200/300

JEAN JUHLIN

20th century American

09N PRIDE #14/150

papercast
24 x 18 in. / 61 x 46 cm. Dated: 1985
signed, titled, dated and numbered along bottom;
in plexiglass box
ESTIMATE: 600/800

19N SUMMER RAIN CLOUD WOMAN #9/125

papercast
15.25 x 21.25 in. / 39 x 54 cm.
signed, titled and indistinctly numbered along bottom
ESTIMATE: 600/800

ILLINGWORTH HOLEY KERR

[see biography Lot #65]

69N BIGHORN SHEEP #91/100

linoblock on paper
8.5 x 5.25 in. / 22 x 13 cm.
10.25 x 14.25 in. / 26 x 36 cm. — Paper Size
signed with monogram in block lower centre;
signed, titled and numbered along bottom; unframed
Ref: from *Illingworth Kerr — 10 Block Prints* portfolio
Prov: purchased from Kathleen Laverty Gallery, Edmonton
ESTIMATE: 100/150

69N SPIKER #91/100

linoblock on paper
9 x 5 in. / 23 x 13 cm.
10.25 x 14.25 in. / 26 x 36 cm. — Paper Size
signed, titled and numbered along bottom; unframed
Ref: from *Illingworth Kerr — 10 Block Prints* portfolio
Prov: purchased from Kathleen Laverty Gallery, Edmonton
ESTIMATE: 100/150

294 SLEEPING HOUND #91/100

linoblock on paper
5.5 x 9 in. / 14 x 23 cm.
10.25 x 14.25 in. / 26 x 36 cm. — Paper Size
signed with monogram in block lower right;
signed, titled and numbered along bottom; unframed
Ref: from *Illingworth Kerr — 10 Block Prints* portfolio
Prov: purchased from Kathleen Laverty Gallery, Edmonton
ESTIMATE: 100/150

**295N** COSI CAT #91/100

linoblock on paper
6 x 7 in. / 15 x 18 cm.
10.25 x 14.25 in. / 26 x 36 cm. — Paper Size
signed, titled and numbered along bottom; unframed
Ref: from *Illingworth Kerr — 10 Block Prints* portfolio
Prov: purchased from Kathleen Laverty Gallery, Edmonton
ESTIMATE: 100/150

296N GOATS #91/100

linoblock on paper
9 x 4.75 in. / 23 x 12 cm.
10.25 x 14.25 in. / 26 x 36 cm. — Paper Size
signed with monogram in block lower right;
signed, titled and numbered along bottom; unframed
Ref: from *Illingworth Kerr — 10 Block Prints* portfolio
Prov: purchased from Kathleen Laverty Gallery, Edmonton
ESTIMATE: 100/150

KATHERINE LAKEMAN

[b.1954] Canadian

ASA

biography and more examples at
<http://www.katherinelakeman.com/>

297 GLACIER

oil on particle board
8.75 x 11.75 in. / 22 x 30 cm.
signed lower right; titled verso
ESTIMATE: 200/300

298 PAST CREMONA

oil on particle board
6 x 12 in. / 15 x 30 cm. Dated: 1999
signed lower right; signed, titled and dated verso
ESTIMATE: 200/300

**FREDERICK WALTER LEE**

[1863-1941] Canadian biography in *E.P.E.C.*, by R.Harper, pg.193 and *Dict. of Canadian Artists*, by C.MacDonald, Vol.3, pg.783; exhibition list in *R.C.A.A.*, by E.McMann, pg.236 — according to Harper, the artist was born in England and moved to Chilliwack, B.C.; in 1900 his address was listed as Montreal when he exhibited watercolour of Qu'Appelle Lakes

**UNTITLED — CHILLIWACK**

watercolour on paper
7.75 x 5.75 in. / 20 x 15 cm. Dated: 1927
signed and dated lower right; in period frame
Prov: The Gainsborough Art Studio, Calgary,
and Collector's Gallery, Calgary, labels verso
ESTIMATE: 250/350

**UNTITLED — MOUNTAIN AT CHILLIWACK**

watercolour on paper
7.75 x 5.75 in. / 20 x 15 cm. Dated: 1931
signed and dated lower left; in period frame
Prov: The Gainsborough Art Studio, Calgary,
and Collector's Gallery, Calgary, labels verso
ESTIMATE: 250/350

GRANT LEIER

[b.1956] Canadian

see *Artists of British Columbia*, by D.Morys-Edge, pg.71, Chartwell Pub., 1986 for artist's statement and another example

**READY FOR ROMANCE**

mixed media on paper board
2.5 x 3.25 in. / 6 x 8 cm. Dated: 1993
bears name, title and date on label verso
Prov: Barton Leier Gallery, Victoria, label verso
ESTIMATE: 200/300

ROBERT LENARD

[1879-1936] Hungarian

biography in *Allgemeines Lexikon der Bildenden Künstler*, by H.Vollmer and *Dictionnaire des Peintres, Sculpteurs et Graveurs*, by E.Benezit, Tome.6, pg.576

**UNTITLED — EUROPEAN VILLAGE**

graphite on paper
8 x 11.5 in. / 20 x 29 cm. Dated: 1928
signed and dated lower right; archival mat
Prov: Collector's Gallery, Calgary, label verso
ESTIMATE: 300/400

ROSE LEONARD

20th century Canadian

biography in *Dict. of Canadian Artists*, by C.MacDonald, Vol.3, pg.812; listed in *Artists in Canada — A Union List*, N.G.C., 1999, pg.426

**BOW LAKE**

oil on canvas board
12 x 16 in. / 30 x 41 cm. Dated: 1970
signed lower right; signed, titled and dated verso
Prov: private collection, Lethbridge
ESTIMATE: 200/300

MURRAY WILLIAM MACDONALD

[1898-1991] Canadian

ASA

see *The Changing Picture, 65 Years of the Edmonton Art Club*, pg.18 for another example of the artist's work in the collection of the A.A.F. as well as *Dict. of Canadian Artists*, by C.MacDonald, Vol.4 pg.1001 for biography

**FOOTHILLS IN AUTUMN**

watercolour on paper
18.5 x 25.25 in. / 47 x 64 cm.
signed lower left; titled on label attached verso;
drymounted to paper board
Prov: private collection, Lethbridge
ESTIMATE: 300/500

RAFAL MALCZEWSKI

[1892-1965] Canadian

see *Dict. of Canadian Artists*, by C.MacDonald, Vol.4 pg.1092 for biography; artist listed on C.H.I.N. web site
www.chin.gc.ca/Resources/e_resources

**MONT. CATHEDRAL**

watercolour on paper
21 x 15 in. / 53 x 38 cm.
signed lower left; bears title on label verso
Prov: Dominion Galleries, Montreal, label verso;
private collection, Montreal
ESTIMATE: 500/700

WILLIAM MALTMAN

[1901-1971] Canadian

CSPWC

biography and another example in *150 Years of Art in Manitoba*, by FEckhardt, pg.92; included in *The Winnipeg School of Art*, by M.Baker, pg.105, University of Manitoba, 1984

**UNTITLED — HOME BY RIVER'S EDGE**

watercolour on paper
8.5 x 9.5 in. / 22 x 24 cm.
signed with estate stamp lower left; archival mat
ESTIMATE: 250/350

**SHARON MARK**

[b.1955] Canadian
 biography and another example in *Guide Vallee*, by F.Vallee, pg.779; *Magazin Art*, 11 annee No.2, 1998/99, pg.94

307 VICTORIAN COTTAGE
 acrylic on canvas
 12 x 16 in. / 30 x 41 cm. Dated: 1999
 signed lower left; signed, titled and dated verso
 Prov: Collector's Gallery, Calgary, label verso
 ESTIMATE: 450/500

IRENE E. McCAUGHERTY

[1914-1996] Canadian
 see *Yesterday's Memories*, by I.McCaugherty, pub. by the artist, 1988; *The Ladder's We Climb*, by I.McCaugherty, pub. by the artist, 1994; *By a Lady, Celebrating Three Centuries of Art by Canadian Women*, by M.Tippett, Penguin Group, 1992

308 UNTITLED — SKATING
 oil on particle board
 16 x 30 in. / 41 x 76 cm.
 signed lower right; some surface dirt noted
 ESTIMATE: 700/900

309 JOHN NO CHIEF
 watercolour on paper
 16.75 x 13 in. / 43 x 33 cm. Dated: 1977
 signed, titled and dated lower right; drawing verso
 ESTIMATE: 500/700

JOAN MIRO

[1938-1983] Spanish
 see *Miro Engraver, 2 vol.*, by Jacques Dupin, Dupin#, Rizolli, 1989; *Joan Miro Lithographs, 1930-1972, 4 vol.*, by F.Mourlot, Mourlot #, 1981; *Joan Miro: Les Affiches Originales*, by Corredor-Matheos, Paris, 1981; biography in *Dictionnaire des Peintres, Sculpteurs et Graveurs*, by E.Benezit, Tome.7, pg.435; artist listed on Getty web site
 //shiva.pub.getty.edu/ulan_browser/

310 GALLERIE MAEGHT — MIRO — SOBRETEIXIMS
 colour lithograph on paper
 31.5 x 22 in. / 80 x 56 cm. Dated: 1973
 unsigned
 Ref: printed by Arte, Paris, for Miro exhibition in 1973
 Prov: private collection, Edmonton
 ESTIMATE: 300/400

311 GALLERIE ADRIEN MAEGHT — OEUVRES GRAPHIQUES
 colour lithograph on paper
 23.5 x 18 in. / 60 x 46 cm. Dated: 1965
 unsigned
 Ref: printed by Arte, Paris, for Miro exhibition in 1965
 Prov: private collection, Edmonton
 ESTIMATE: 300/400

312 UNTITLED — COLOURFUL ABSTRACT
 colour lithograph on paper
 12.5 x 9.5 in. / 32 x 24 cm. Dated: 1972 ca.
 unsigned
 Ref: bears note verso 'from *Joan Miro Lithographs Vol.1* published by Imprimerie Mourlot, 1972 in edition of 5000'
 ESTIMATE: 200/300

GRAHAM NOBLE NORWELL

[1901-1967] Canadian
 OSA
 biography in *N.G.C. Vol.III*, by R.Hubbard, pg.236; *A.G.O.*, by the A.G.O., pg.339; *A Dict. of Canadian Artists*, by C.MacDonald, Vol.5, pg.1403; exhibition list in *R.C.A.A.*, pg.306 and *M.M.F.A.*, by E.McMann, pg.286

313 UNTITLED — LAURENTIAN LAKE WITH
 NORTHERN LIGHTS
 watercolour on paper board
 12.75 x 19.25 in. / 32 x 49 cm.
 signed lower right
 ESTIMATE: 400/500

314 UNTITLED — FALL IN THE LAURENTIANS
 watercolour on paper board
 12.5 x 16.25 in. / 32 x 41 cm.
 signed lower right
 ESTIMATE: 400/500

DAPHNE ODJIG

[b.1919] Canadian
 RCA
 see *Daphne Odjig — A Retrospective 1946-1985* by E.McLuhan, Thunder Bay National Exhibition Centre, 1985; *Time for Dialogue*, by J.Cardinal-Schubert, pg.18, Calgary Aboriginal Awareness Society, 1992; *Dict. of Canadian Artists*, by C.MacDonald, Vol.5, pg.1419 for biography

315 NEW LOVE #26/100
 colour silkscreen on paper
 20 x 16 in. / 51 x 41 cm. Dated: 1992
 signed, titled, dated and numbered along the bottom;
 archival mat
 Prov: Bearclaw Gallery, Calgary
 ESTIMATE: 300/400



**CHARLES Z. OFFIN**

20th century American

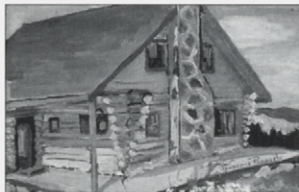
- 316** UNTITLED — PLANTERS, MAJORICA
etching on paper
7.75 x 5.75 in. / 20 x 15 cm. Dated: 1932 ca.
signed in plate lower right; archival mat
Prov: private collection, Calgary
ESTIMATE: 200/300

FRANCOIS PAGNUELO

[1918-1957] Canadian

biography in *Dict. of Canadian Artists*, by C.MacDonald, Vol.5 pg.1465; exhibition list in *M.M.F.A.*, pg.291 by E.McMann; artist listed on C.H.I.N. web site
www.chin.gc.ca/Resource/e_resources

- 317** UNTITLED — LOG CABIN
oil on canvas board
8 x 10 in. / 20 x 25 cm.
signed lower right; graphite sketch verso
ESTIMATE: 300/400

**PERCY [TWO GUN] PLAIN WOMAN**

[1895-1961] Canadian

according to the Calgary Herald, the artist started painting in 1935. In later years he attended the Banff School of Fine Art. His nephew was well-known Alberta artist, Gerald Tailfeathers

- 318** UNTITLED — INDIAN CHIEF
oil on canvas
15.75 x 14 in. / 40 x 36 cm.
signed Two Gun lower left
Prov: private collection, Red Deer
ESTIMATE: 100/150

IVY ROBERTS

20th century Canadian

- 319** UNTITLED — ABSTRACT
watercolour on paper
12.5 x 12.5 in. / 32 x 32 cm.
signed and indistinctly dated lower right
together with
UNTITLED — ABSTRACT
watercolour on paper
9.25 x 13.25 in. / 23 x 34 cm. Dated: 1980
signed and dated lower centre
Prov: private collection, Calgary

LOT OF TWO — ESTIMATE: 200/300

NOBORU SAWAI

[b.1931] Canadian

see *A Garden of Delights: 25 Years of Prints by Noboru Sawai*, K.Ylitalo, Nickle Arts Museum, 1994; *Printmaking in Alberta 1945-1985*, by B.Cochran, pg.127 and *Songs of Spring — Noboru Sawai 1972-1984*, by L.Dompierre, Agnes Etherington Art Centre, 1984, for biography and other examples; included in *Printmaking in B.C. 1883-1983*, by N.Tuele, A.G.G.V.; biography available on web site www.ccca.ca/english/artist/saw.html

- 320** GREAT CONCERT #AP
colour etching and block print on paper
17.75 x 23.75 in. / 45 x 60 cm.
20.25 x 26 in. / 51 x 66 cm. — Paper Size
signed, titled and numbered lower right; unframed
ESTIMATE: 300/500



- 321** ANTIQUE BIRD CAGE #II/XXV
colour etching and woodblock on paper
20.75 x 14.75 in. / 53 x 37 cm.
signed, titled and numbered along bottom; unframed
Ref: part of *Twentieth Anniversary 1959/1979*
Gallery Moas Limited portfolio
ESTIMATE: 300/500

SCHOOL**BRITISH SCHOOL**

- 322** VIEW OF RAMSGATE WITH VESSELS IN A STRONG GALE, MAKING FOR THE HARBOUR
hand coloured engraving on paper
14.5 x 22 in. / 37 x 56 cm. Dated: 1826 ca.
printed title and inscription along bottom;
some paper discolouration noted
Ref: engraved by E.Duncan and published by the artist W. J. Huggins [1781-1845]
Prov: private collection, Edmonton
ESTIMATE: 150/200

- 323** UNTITLED — THREE ENGLISH VIEWS
various media and sizes
lot of two etchings and lithograph framed together
Prov: private collection, Edmonton
ESTIMATE: 100/150

**CANADIAN SCHOOL**

20th century Canadian

324 UNTITLED — BOW VALLEY CORRIDOR
gouache on paper
4.5 x 5.5 in. / 11 x 14 cm.
signed with initials "M.W.M." lower right
Prov: Collector's Gallery, Calgary, label verso
ESTIMATE: 150/250

325 UNTITLED — ROCKY MOUNTAIN STREAM
gouache on paper
5.5 x 7.5 in. / 14 x 19 cm.
signed with initials "M.W.M." lower right
Prov: Collector's Gallery, Calgary, label verso
ESTIMATE: 150/250

326 UNTITLED — SUNSET MOUNTAIN LAKE
watercolour on paper
10.25 x 7.25 in. / 26 x 18 cm. Dated: 1940 ca.
signed with initials "J.B." lower right
Prov: The Art Shop, Calgary, ca. 1935 - 1945, label verso
ESTIMATE: 100/150

DON SCOTT

[b.1933] Canadian

artist listed in *Artists in Canada: a union list of artists' files*, by S.Hasbun, pg.639

327 UNTITLED — SANDY COVE N.S.
oil on particle board
12 x 16 in. / 30 x 41 cm.
signed lower right
Prov: private collection, Swift Current
ESTIMATE: 250/350

328 UNTITLED — WINTER BARN, NOVA SCOTIA
oil on particle board
12 x 16 in. / 30 x 41 cm.
signed lower right
Prov: private collection, Swift Current
ESTIMATE: 250/350

STUART CLIFFORD SHAW

20th century Canadian

329 GOLD MINE COUNTRY
oil on canvas board
10.5 x 8.5 in. / 27 x 22 cm.
signed lower left; titled verso
ESTIMATE: 350/450

CLAUDE A. SIMARD

[see biography Lot #135]

330 UNTITLED — FLORAL STUDY
ink on paper
10.5 x 7.5 in. / 27 x 19 cm.
unsigned; archival mat
Prov: Master's Gallery, Calgary, label verso
ESTIMATE: 200/300

JOHN GORDON SINCLAIR

[1889-1980] Canadian

ASA

charter member of the A.S.A., see *Alberta Society of Artists — the First Seventy Years*, by K.Zimon, pg.16, U.of C. Press

331 MILE 44, JASPER — BANFF HIGHWAY
oil on particle board
16 x 20 in. / 41 x 51 cm.
signed lower left
Ref: Federation of Canadian Artists, Coste House,
Calgary exhibition label verso
Prov: ex-collection R.A. Brown;
Gainsborough Gallery, Calgary, label verso
ESTIMATE: 200/300

332 BIRCHES AT ELK ISLAND
oil on canvas
18 x 13 in. / 46 x 33 cm.
signed lower right; signed, titled and inscribed verso
Prov: ex-collection R.A. Brown;
Gainsborough Gallery, Calgary, label verso
ESTIMATE: 200/300

DONALD APELLEBE SMITH

[b.1917] Canadian

exhibition list *M.M.F.A.*, by E.McMann, pg.356,
U of Toronto Press, 1988

333 ROCK TAPESTRY
oil on canvas board
19.75 x 23.75 in. / 50 x 60 cm. Dated: 1974
signed lower right; signed, titled and dated verso
Prov: Art Emporium, Vancouver, label verso;
private collection, Edmonton
ESTIMATE: 300/400

JOHN HAROLD THOMAS SNOW

[see biography Lot #140]

334 PRIDDIS LANDSCAPE #78/100
colour lithograph on paper
24 x 18 in. / 61 x 46 cm.
30.25 x 22.5 in. / 77 x 57 cm. — Paper Size
signed, titled and numbered along bottom; unframed
ESTIMATE: 350/450

335 NIDO #10/25
colour lithograph on paper
20 x 16 in. / 51 x 41 cm.
signed, titled and numbered along bottom;
small acid stain in margin; unframed
Prov: Galerie Agnes LeFort, Montreal, label verso
ESTIMATE: 250/350

336 ATTHIS #4/24
colour lithograph on paper
17.7 x 14 in. / 45 x 36 cm.
signed, titled and numbered along bottom;
drymounted to paper board; unframed
ESTIMATE: 250/350

**ALEX R. STAVENITZ**

20th century American

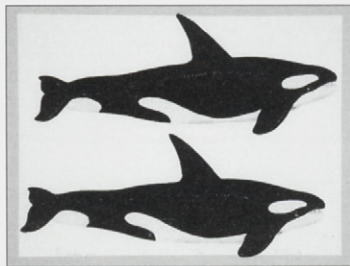
- 337** UNTITLED — CHARTREUSE
relief print on paper
4.75 x 3.75 in. / 12 x 10 cm. Dated: 1930 ca.
signed in plate upper right; archival mat
Prov: private collection, Calgary
ESTIMATE: 100/150

DAVID THAUBERGER

[b.1948] Canadian

see *David Thauberger Paintings 1978-1988*, by P.White, Mackenzie Art Gallery, 1988; included in *Contemporary Canadian Art*, by D.Burnett/M.Schiff, pg.283, Hurtig Pub., 1983; included in *Visions: Contemporary Art in Canada*, ed.R.Bringhurst et al, pg.58, Douglas and McIntyre, 1983; work included on Mackenzie Art Gallery web site; represented by Susan Whitney Gallery, Regina and Masters Gallery, Calgary

- 338** WHALE PRINT #113/150
colour silkscreen on paper
16 x 20 in. / 41 x 51 cm. Dated: 1979
signed, titled, dated and numbered along bottom;
archival mat
ESTIMATE: 300/400

**MILDRED VALLEY THORNTON**

[1890-1967] Canadian

see *Mildred Valley Thornton, 1890-1967*, by Butler Galleries and Westbridge Fine Arts; biography in *Biographical Dict. of Saskatchewan Artists — Women*, by M.Newman, pg.252; listed in *British Columbia Women Artists 1885-1985*, by N.Tuele, A.G.G.V.

- 339** UNTITLED — INTERIOR B.C.
watercolour on paper
6.5 x 9.5 in. / 17 x 24 cm.
signed lower right; archival mat
Prov: Collector's Gallery, Calgary, label verso
ESTIMATE: 600/800

**J.[JESSIE?] THORSETH**

20th century Canadian

listed in *Artists in Canada — A Union List*, N.G.C., 1999, pg.681

- 340** UNTITLED — INDIAN CHIEF
oil on canvas board
20 x 16 in. / 51 x 41 cm.
signed lower left
Prov: private collection, Red Deer
ESTIMATE: 100/150

TONY URQUHART

[b.1934] Canadian

CSGA, CSPWC, OSA, ARCA

see *Worlds Apart: the Symbolic Landscapes of Tony Urquhart*, by J.Vastokas, Art Gallery of Windsor, 1988; *N.G.C. Vol.III*, by R.Hubbard, pg. 318 and *A.G.O.*, by the A.G.O., pg.483 for biography and other examples; *The Work of Six Artists*, by R.Schrager, pg.32, A.G.O., 1978; biography in *Dictionnaire des Peintres, Sculpteurs et Graveurs*, by E.Benezit, Tome.10, pg.348

- 341** JEU DE CARTES
ink on paper
9.25 x 6.75 in. / 23 x 17 cm.
signed and titled on paper attached verso; archival mat
Prov: D&E Lake Fine Arts, Toronto, label verso
ESTIMATE: 300/400

**GEORGE HARLOW WHITE**

[1817-1887] Canadian
OSA, RCA

biography in *A.G.O.*, by the A.G.O., pg.506 and
E.P.E.C., by R.Harper, pg.329; exhibition list in
R.C.A.A., by E.McMann, pg.426

- 3** DONATIS' COMET, ACOMB, YORK, OCT. 2, 1858
watercolour on paper
3 x 5.5 in. / 8 x 14 cm. Dated: 1858
signed with initials lower left; titled and inscribed verso;
unframed
ESTIMATE: 250/350

JACK WINN

20th century Canadian

- 3** FLOWERS FOR SARAH
oil on particle board
8 x 10 in. / 20 x 25 cm. Dated: 1995
signed lower centre; titled and dated verso
ESTIMATE: 400/500

GRAHAM WRAGG

20th century Canadian

- 3** WESTLAND LYSANDER IIIA, 161 SQUADRON,
ENGLAND, 1943
acrylic on illustration board
18 x 24 in. / 46 x 61 cm. Dated: 1975
signed and dated lower right;
signed, titled and dated verso
Prov: private collection, Calgary
ESTIMATE: 300/500

**OSSIP ZADKINE**

[1890-1967] French

biography in *Dictionnaire des Peintres, Sculpteurs et Graveurs*, by E.Benezit, Tome.8, pg.832

- 3** DIE SAULEN DES HERAKLES #104/350
lithograph on paper
17.7 x 24 in. / 45 x 61 cm.
signed and numbered along bottom; archival mat
Ref: from portfolio *Labours of Hercules* portfolio,
printed in Frankfurt on Main, Germany;
information printed in German verso
ESTIMATE: 200/300

MARY MARGUERITE PORTER ZWICKER

[b.1904] Canadian

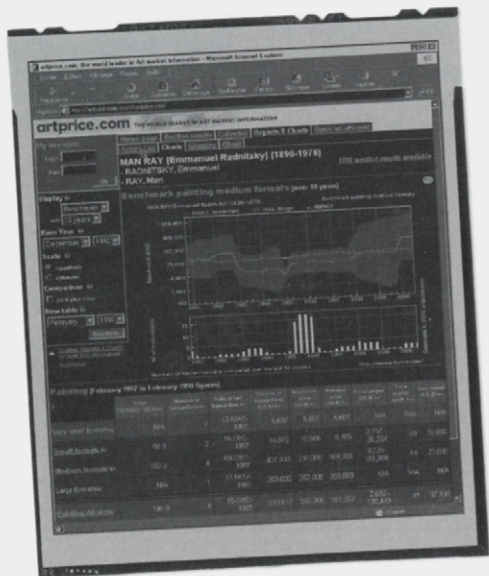
exhibition list in *R.C.A.A.*, by E.McMann, pg.440

- 3** THE MERRY-GO-ROUND
wood block on paper
4 x 5 in. / 10 x 13 cm. Dated: 1942 ca.
unsigned; archival mat
Ref: included in magazine *Maritime Art*, 1942
Prov: private collection, Calgary
ESTIMATE: 100/150

Thank you for attending.

*Clients are reminded that the NEXT AUCTION is scheduled for **November 4, 2001**. Please contact the office early regarding consignments or if there are particular artists you are looking for.*

Art can be a safe investment when you're in the know



The largest international data bank of art auction results:

- Sourced from 2,900 auction houses worldwide
- 2,200 to 2,500 new results added everyday
- 2,500,000 results on more than 192,000 artists from the 4th C. to the present.

In 2001, artprice.com will offer a unique artist data bank of over one million biographies.

Artprice.com also publishes world-renowned art reference books.

Art for more than art's sake-by investing part of your savings in the art market, you can

achieve your financial goals, enjoy art and build a tax-free estate. Artprice.com offers the world's only comprehensive information bank on art auction results.

This, together with the site's econometric and financial data, adds major value for art investors and collectors who are buying, selling or appraising a work of art. And the information we provide to financial planners, banks and insurers serves to smooth out price discrepancies and enhance market transparency.

As the world's leading source of information on the art market, every day artprice.com identifies market trends for leading news agencies and financial publications.

artprice.com

the world leader in art market information

The institutional partner of the 2001 and 2003 Lyon Contemporary Art Biennials

listed on the French Stock Exchange (NM7478) |  **server group** S.A.S. capital FRF598,539,000
A stake of the Bernard Arnault group (Agafin)

ABSENTEE BID FORM

I wish to place the following confidential bid(s) with LEVIS Fine Art Auctions & Appraisals for their sale. I agree that LEVIS Fine Art Auctions & Appraisals will, to the best of their ability, attempt to purchase for me the following lots up to the maximum amount specified below, or where indicated plus one incremental bid.

NOTE TO ABSENTEE BIDDERS: All bids are accepted subject to the 'Standard Conditions of Sale' printed in the catalogue. The Amount listed is for hammer price – the Buyer's Premium of 15% up to & including \$25,000, 10% thereafter and G.S.T. of 7% are in addition to the amounts listed below

LEVIS Fine Art Auctions & Appraisals
A Division of Artbank Incorporated
#128, 1711 – 10 Avenue S.W.
Calgary, Alberta T3C 0K1

Tel: (403) 541-9099

Fax: (403) 541-9097

NEW POLICY: In order to serve all our clients fairly, ALL Absentee bids must be received at the office by NOON the day before the auction. PLEASE, NO EXCEPTIONS. Thank you for your cooperation.

SALE DATE:

SUNDAY MAY 6, 2001

LOT NUMBER	ARTIST/ITEM	TOP HAMMER PRICE	PLUS ONE BID
------------	-------------	------------------	--------------

Payment may be made by cash, certified cheque, MasterCard, Visa or bank draft. Payment must be made in full the day of the auction.

Bank Reference:

MasterCard

ACCOUNT NO.

EXPIRY DATE

Visa

ACCOUNT NO.

EXPIRY DATE

DATE

NAME

ADDRESS

CITY

POSTAL CODE

RES

BUS

FAX

E-MAIL

I have read your Conditions of Sale printed in the catalogue and I am bidding in accordance with them.

SIGNATURE



94 YOU MUST COUNT ALL THE ROSES
oil/canvas
GABOR L. NAGY
30x40 in./76x102 cm.
\$1,800/2,200



99 FEELIN' SOOO GOOD!
oil/canvas
URSULA PAGENKOPF
14x18 in./36x46 cm.
\$600/800



96 FISHING BOATS, GASPE
oil/board
DONALD NEDDEAU
16x20 in./41x51 cm. Dated: 1956 ca.
\$600/800



103 SUMMER SKY
oil/canvas board
FRANK PANABAKER
16x17.75 in./41x45 cm.
\$1,200/1,500



148 AERIE, 1988
steatite sculpture
DELL WARNER
17x18.5x10 in./43x47x25 cm.
\$2,000/2,500



115 HORIZON EN AUTOMNE
oil/canvas
GASTON REBRY
16x20 in./41x51 cm. Dated: 1984
\$900/1,200



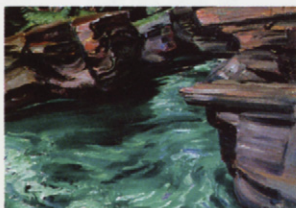
106 ANDALUSIAN VILLAGE 2
oil/canvas board
GEORGE PEPPER
14x18 in./36x46 cm.
\$1,800/2,200



108 ESSAYS IN WOOD PORTFOLIO [10]
wood engraving
W.J. PHILLIPS
(various sizes) Dated: 1930
\$4,000/6,000



114 BIRD OF MYSTERY, BIRD OF BEAUTY
mixed media/canvas
JANE ASH POITRAS
24x24 in./61x61 cm.
\$2,000/2,500



105 FAST WATER AT KANANS[K]IS
oil/board
GEORGE PEPPER
15x18 in./38x46 cm.
\$3,000/3,500



118 LAURENTIAN LANDSCAPE
watercolour/paper
GOODRIDGE ROBERTS
13.25x19.5 in./34x50 cm.
\$3,000/3,500



104 EARLY MORNING
watercolour
STAN PERROTT
21.5x29 in./55x74 cm. Dated: 1998
\$1,200/1,500



107 DARK HAired WOMAN
oil/board
GERTRUDE F. PERCIVAL
23.5x19.25 in./60x49 cm.
\$800/1,200



332 BIRCHES AT ELK ISLAND
oil/canvas
GORDON SINCLAIR
18x13 in./46x33 cm.
\$200/300



119 WOMAN, MEXICO, 1946
oil/paper
CLIFFORD ROBINSON
27x20.25 in./68x51 cm.
\$800/1,000



139 ABSTRACT
acrylic/paper
GORDON SMITH
20.5x16 in./52x41 cm.
\$1,200/1,500



125 WINTER VILLAGE SCENE
oil/canvas
19TH CENTURY
NORTH AMERICAN SCHOOL
14x20 in./36x51 cm.
[LOT OF TWO]
\$3,500/4,500



123 LATE NIGHT ON RAVEN LAKE
watercolour
CARL SCHAEFER
11x15 in./27x37 cm. Dated: 1964
\$2,500/3,000



135 GERANIUM SUR FOND BLEU
watercolour
CLAUDE A. SIMARD
14x15 in./35x39 cm.
\$600/800



128 WATER WHEEL, 1937
watercolour/paper
MARGARET SHELTON
10x14.5 in./25x37 cm.
\$500/700



136 FOOTHILLS RANCH
watercolour/paper
HENRY JOHN SIMPKINS
20x28 in./50x70 cm.
\$1,200/1,500



137 THREE STATELY SISTERS AT CANMORE
oil/canvas
CHARLES WALTER SIMPSON
13x16 in./33x41 cm.
\$600/800



131 BOW FALLS AT BANFF
linoblock/paper
MARGARET SHELTON
9x12 in./22x30 cm.
\$600/800



145 TOWNSHIP VILLAGE
oil/canvas board
TERRY TOMALTY
12x16 in./30x41 cm.
\$400/600



153 INQUISITIVE PANSIES, 1935
wood block/paper
MARY WRINCH
7x7 in./18x18 cm.
\$700/900



140 BIRCH TREES, 1981
oil/canvas
JOHN SNOW
30x36 in./76x91 cm.
\$1,200/1,500



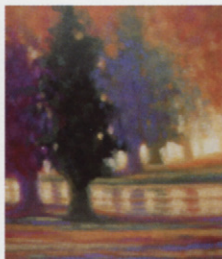
152 CHURCHILL MOUNTAINS
oil/canvas
KARL E. WOOD
18x24 in./46x60 cm.
\$1,000/1,500



335 NIDO
lithograph
JOHN SNOW
20x16 in./51x41 cm.
\$250/350



143 FLORAL
oil/board
WL. STEVENSON
16x12 in./41x30 cm.
\$900/1,200



146 CHARME FLERIQUE
oil/canvas
CLAUDE TREMBLAY
48x36 in./122x91 cm.
\$800/1,000



154 RUE STE. ANNE, QUEBEC
pastel/paper
LUCIENNE ZEGRAY
15x12 in./38x30 cm.
\$700/900



50
oil/panel
ALEXANDER YOUNG JACKSON

ST. LAWRENCE NORTH SHORE, VILLAGE IN SPRING
8.5x10.5 in./22x27 cm. Dated: 1935 ca.
\$15,000/20,000



113
oil/canvas
ROBERT WAKEHAM PILOT

SUMMER
22x28 in./56x71 cm. Dated: 1939
\$12,000/15,000



297 GLACIER
oil/particle board 9x12 in./22x30 cm.
KATHERINE LAKEMAN \$200/300



71 A LA SORTIE DU VILLAGE
oil/canvas 24x30 in./61x76 cm.
CLAUDE LANGEVIN \$1,800/2,400



299 CHILLIWACK 1927
watercolour/paper 8x6 in./20x15 cm.
FREDERICK LEE \$250/350



301 READY FOR ROMANCE
mixed media/paper board 2.5x3 in./6x8 cm.
GRANT LEIER \$200/300



73 NETTING AT ROUND LAKE (DU'APPELLE)
acrylic/canvas 24x36 in./61x91 cm.
MICHAEL LONECHILD \$1,500/2,000



76 LANDSCAPE
oil/canvas 3.5x5.5 in./9x14 cm.
JOHN LYMAN \$1,500/2,000



86 WATERGOD, 1965 ca.
acrylic/paper 17.5x29 in./44x74 cm.
NORVAL MORRISSEAU \$2,500/3,500



75 SASKATCHEWAN GRAIN ELEVATORS
oil/canvas board 16x20 in./41x51 cm.
ERNEST LUTHI \$700/900



79 AUTUMN
oil/board 10x14 in./26x35 cm. Dated: 1930 ca.
PEGI NICOL MACLEOD \$2,500/3,500



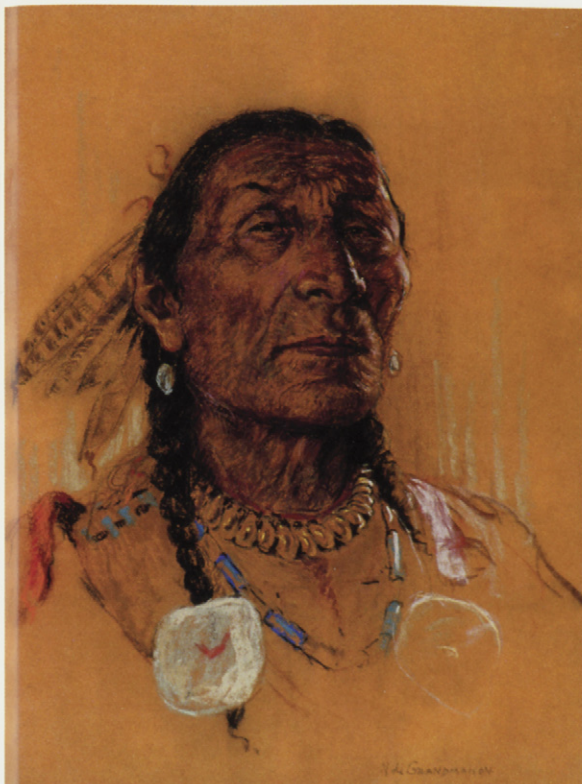
81 ELEVATORS, ALT.
oil/canvas 36x72 in./91x183 cm. Dated: 1930 ca.
ROBERT F.M. MCINNIS \$1,500/2,000



84 STILL LIFE, 1961
oil/particle board 18x48 in./46x122 cm.
FRANCIS JOHN MILLER \$900/1,200



85 SHAMAN'S ... WORLD
acrylic/canvas 60x59.5 in./152x151 cm.
NORVAL MORRISSEAU \$9,000/12,000



23
pastel/paper
NICHOLAS DE GRANDMAISON

TURNING ROBE
27x21 in./69x53 cm.
\$9,000/12,000



102
oil/canvas
FRANK PANABAKER

EVENING SURF
35.25x45 in./90x114 cm. Dated: 1933
\$3,000/4,000

**FIRST SESSION Sunday, 11
SECOND SESSION Sunday,**

- 1 Aiken; School of Henry
205-206 Alt; Marino
207 Alvar; Sunol Munoz Ramos
269 Akenesie/Novalinga
270 Aliknak/Klengenberg
271 Aliknak/Nigiyok
272 Anghik/Abraham
208-209 Armington; Caroline
210 Armstrong; William Walton
211 Atkins; Caven
273 Auksaq; George
- 212 **B**aber; Walter James
213 Ballantyne; K.M.
214 Barleigh; Alfred C. & Barbara Leighton -
215-221 Bates; Maxwell Bennett
2-3 Bedard; Pierre
202 Beny; Wilfred Roy Roloff
222-223 Bergman; Henry Eric
4 Besco; Donald
224 Betts; Joyce
5 Blackwood; David Lloyd
225-228 Blomfield; James Jervis
229 Bonet; Jordi
201-204 Books; various
6-7 Bouchard; George Lorne Holland
112, 204 Boulet; Roger H.
230 Brander; F.W.
230 Brender a Brandis; Gerard
8 Brigen; Frederick Henry
231-232 Brimacombe; Errol
9 Browne; Belmore
10 Brunoni; Serge
11 Burton; Ralph W.
12-13 Bush; John [Jack] Hamilton
- 233 **C**alver; Richard
234-235 Casson; Alfred Joseph
14 Castonguay; Gerard
236 Chagall; Marc
15 Champagne; Horace
16-17 Charlesworth; Rod
53 Chikanobu; Yoshu
18-20 Collier; Alan Caswell
237 Coombs; Edith Grace [Lawson]
21 Cowin; Jack Lee
22 Crockford; Duncan MacKinnon
238 Cummings; E.
- 23-24 **D**e Grandmaison; Nicholas
25-27 de Grandmaison; Orestes [Rick]
239-241 Duguay; Rodolphe

**WHAT THE HECK IS
GOING ON**

Never been to an auction before?
Please join us at the Preview for a
brief talk by Doug Levis on bidding
and buying at auctions.

Saturday, May 5 at 1:00 p.m.

Our spring auction
will be held at
ARTSPACE

2nd Level, Crossroads Market
1235 26 Ave S.E.,
Calgary, Alberta

ay 6, 2001 Lots#1 - 154 starting at 1:00 pm

May 6, 2001 Lots#201 - 347 starting at 4:30 pm or 15 min. after first session

- 242-243 **E**dwards; Howard S.
 275 Elizapee; Ishuluklak
 244-246 Esler; John Kenneth
- 247-248 **F**airley; Barker
 28 FitzGerald; Lionel LeMoine
 249 Floethe; Richard
- 29 **G**agen; Robert Ford
 250 Garner; Alec John
 30 Genn; Robert
 31-33 Gissing; Roland
 34-36, 251-252 Glyde; Henry George
 253-254 Godfrey; William Frederick George
 37 Goldberg; Eric
 38 Gould; John Howard
 39 Graham; Colin D.
 40 Grayson; Ellen [Vaughan] Kirk
 255-257 Greene; Thomas Garland
 41 Grun; Jules Alexander
- 42 **H**allam; Joseph Sydney
 276 Hanna; Bart
 258 Harris; Lawren Stewart
 259-261 Harrison; Ted
 43 Harvey; Reginald Llewellyn
 44 Hoch; James
 45 Holdstock; Alfred Worsley
 262 Hook; Anne Smith
 263-264 Hornyansky; Nicholas
 46-47 Horvath; George A.
 48 Hughes; Edward John
 49 Humphrey; Jack Weldon
 265 Huntley; Victoria Hutson
 266 Hurley; Robert Newton
 267 Hutchins; E.
 268 Hutchins; Ernest John
- 269-287 **I**nuit; various
 277 Iqalug; Mina
 288 Isbister; Arnold
- 50-52 **J**ackson; Alexander Young
 289 Janvier; Alex
 63 Johnston; Frances-Anne
 290-291 Juhlin; Jean
- 64 **K**enderdine; Augustus
 Frederick Lafosse
 65, 292-296 Kerr; Illingworth Holey
 66 King; Jac
 278 Kitekudlak; J.
 67 Knowles; Dorothy
 279 Koonark; Moses
 68 Kui; Wang

- 54-57 Kunichika; Toyohara
 69 Kurelek; William
 58 Kuroda; Shigeki
- 297-298 **L**akeman; Katherine
 70 Lamb; Steven
 71-72 Langevin; Claude
 299-300 Lee; Frederick Walter
 301 Leier; Grant
 302 Lenard; Robert
 303 Leonard; Rose
 73-74 Lonechild; Michael
 75 Luthi; Ernest
 76-77 Lyman; John Goodwin
- 78 **M**acDonald; James
 Edward Hervey
 304 MacDonald; Murray William
 79 Macleod; Pegi Nicol
 305 Malczewski; Rafal
 306 Maltman; William
 307 Mark; Sharon
 80 Martin; Thomas Mower
 308-309 McCaugherty; Irene E.
 81-83 McInnis; Robert F.M.
 84 Miller; Francis John
 310-312 Miro; Joan
 85-87 Morrisseau; Norval
 88 Mount; Rita
 89-91 Muhlstock; Louis
 92-93 Myren; Ronald L.
- 94 **N**agy; Gabor L.
 280 Nakoqee; Moses
 95-96 Neddeau; Donald Frederick Price
 313-314 Norwell; Graham Noble
- 315 **O**djig; Daphne
 316 Offin; Charles Z.
 97 Ogden; Dr. J. Williams
 98 Ogilvie; William Abernethy
- 99-100 **P**agenkopf; Ursula
 317 Pagnuelo; Francois
 101 Palmer; Franklin [Frank]
 102-103 Panabaker; Frank Shirley
 105-106 Pepper; George Douglas
 107 Percival; Gertrude F.
 104 Perrott; James Stanford [Stan]
 108-111 Phillips; Walter Joseph
 113 Pilot; Robert Wakeham
 281-283 Piquoukun; David Ruben
 284 Pitsiulak; Lipa
 318 Plain Woman; Percy [Two Gun]
 114 Poitras; Jane Ash
 285 Porter; Ralph

- 115-116 **R**ebry; Gaston
 117 Reid; Isabelle Chestnut
 319 Roberts; Ivy
 118 Roberts; William Goodridge
 119-122 Robinson; Clifford Foard
- 320-321 **S**awai; Noboru
 123-124 Schaefer; Carl Fellman
 125, 201, School; various
 322-326
- 126 Scott; Adam Sherriff
 327-328 Scott; Don
 329 Shaw; Stuart Clifford
 127-134 Shelton; Margaret
 135, 330 Simard; Claude A.
 136 Simpkins; Henry John
 137-138 Simpson; Charles Walter
 331-332 Sinclair; John Gordon
 133 Smith; Donald Appellebe
 139 Smith; Gordon Appely
 140, 334-336 Snow; John Harold Thomas
 141 Stapleton; William J.
 337 Stavenitz; Alex R.
 142 Stephenson; Lionel MacDonald
 143 Stevenson; William Lewy Leroy
- 59 **T**ankei
 338 Thauberger; David
 144 Thirkettle; Sharon
 339 Thornton; Mildred Valley
 340 Thorsh; J.[Jessie?]
 145 Tomalty; Terry
 60 Toyokuni III; Kunisada
 146 Tremblay; Claude
- 341 **U**rquhart; Tony
- 147 **V**alentine; A.C.
- 148 **W**arner; Dell
 149 Warren; Emily Mary Bibbns
 342 White; George Harlow
 150 Wilkinson; Thomas Harrison
 343 Winn; Jack
 151-152 Wood; Karl E.
 344 Wragg; Graham
 153 Winch; Mary Evelyn
- 61-62 **Y**okoi; Tomoe
- 345 **Z**adkine; Ossip
 154 Zegray; Lucienne Boucher
 346 Zwicker; Mary Marguerite Porter

