



119
oil on particle board
MARY PRATT

UNTITLED - PLUM TOMATOES, 1982
14.75 x 20 in. / 37 x 51 cm.
\$4,000/6,000

LEVIS

FINE ART AUCTIONS & APPRAISALS

A DIVISION OF ARTBANK INC.

UNRESERVED FINE ART AUCTION

— BUYERS PREMIUM 15% UP TO & INCLUDING \$25,000, 10% THEREAFTER —

Property of the Petro-Canada Corporate Art Collection
with proceeds to the Calgary Children's Initiative.

PREVIEW

Tuesday, January 16, 2001

from noon. to 5 p.m.

& 7 to 10 p.m.

Wednesday, January 17, 2001

from 10 a.m. to 5 p.m

AUCTION LOTS 1-180

Wednesday, January 17, 2001

at 7:00 p.m.

The Hyatt Regency Calgary

700 Centre Street SE,
Calgary, Alberta

LOCATION

For more information contact Doug Levis or Anna Gardner at
Levis Fine Art Auctions & Appraisals:

1711 10 Avenue S.W. #128, Calgary, Alberta T3C 0K1

TEL: (403) 541-9099 FAX: (403) 541-9097

Website www.levisauctions.com or e-mail: mail@levisauctions.com

CATALOGUE \$20 • \$22 BY MAIL (PLUS GST)

ISBN 1203-3081

A message from Ron Brenneman



In November 2000, we announced a multi-step plan to distribute a significant portion of our corporate art collection to make the collection more widely accessible to Canadians and, at the same time, to use these artworks to assist the charitable sector.

The creation of this corporate collection over the years has provided support for a number of great Canadian artists. In taking their works beyond our office walls, we have the opportunity to unlock the value of the collection for the entire community and create new interest in these works of art.

We're delighted that more Canadians will be able to view and enjoy this collection and we're gratified that we're also able to offer a significant benefit to a number of Canadian charitable organizations.

The January 17, 2001 public auction offers an opportunity to art buyers across the country to bid on some outstanding pieces from our collection and, at the same time, benefit an important new movement in this city — the Calgary Children's Initiative. This recently launched program, promoting the well-being of "every kid in Calgary", has the potential to be a powerful force in our community. Through the United Way and its many community, government, private and individual partners, we have a unique opportunity to draw together to support the children of Calgary.

We're delighted to be able to partner with the visual arts community and the Calgary Children's Initiative to make this auction a resounding success for both buyers and this important cause.

Ron Brenneman,
President and CEO
Petro-Canada



The Art of
Caring

An Auction for the Benefit
of Calgary's Children



42
watercolour on paper
ALEXANDRA [SANDRA] HAESEKER

BULL'S EYE, 1981
20.5 x 28.25 in. / 52 x 72 cm.
\$1,200/1,500



48
mixed media on canvas
JOHN HARTMAN

THE ARTIST'S HOME IN WINTER
41 x 57.5 in. / 104 x 146 cm.
\$4,000/5,000



41
watercolour
JULIUS GRIFFITH

SHIPS WAITING, 1984
21.25 x 29.25 in. / 54 x 74 cm.
\$500/600



45
oil on canvas
DAVID HAIGH

SUNDECK
32.5 x 35.75 in. / 83 x 91 cm.
\$1,500/2,000



46
acrylic on fabric
ANN HARBUZ

BAKING BREAD, 1980
22 x 28 in. / 56 x 71 cm.
\$400/600



50
mixed media on paper
TOM HOPKINS

SUNDAY
21.75 x 29 in. / 55 x 74 cm.
\$1,200/1,500



56
relief print on paper
TIMOTHY KUANANA

COUPLE HUNTING, 1964
23.75 x 31 in. / 60 x 79 cm.
\$200/300



60
colour pencil on paper
BROCK IRWIN

PORTRAIT OF TWO SISTERS, 1981
23.75 x 29.75 in. / 60 x 76 cm.
\$400/600



30
mixed media
CHRISTIAN ECKART

UNTITLED
59 x 22 in. / 150 x 56 cm.
\$2,000/2,500



59
relief print
JESSIE OONARK

TWO BIRDS, 1981
30.25 x 20.75 in. / 77 x 53 cm.
\$200/300



62
acrylic
ALEX JANVIER

FRONTLINE WATER WALKER
48 x 36 in. / 122 x 91 cm.
\$2,000/2,500



71
mixed media
HAROLD KLUNDER

STUDY: SCHOENBERG 5, 1980
31.5 x 22.5 in. / 81 x 58 cm.
\$1,200/1,500



61
watercolour on paper
GERSHON ISKOWITZ



69
oil on canvas
ILLINGWORTH KERR

69
EVENING LIGHT, SPRING
22 x 27.75 in. / 56 x 70 cm.
\$2,000/2,500



73
oil on canvas 24x29 in./61x74 cm. Dated: 1984 S#S
DOROTHY KNOWLES

73
HEADING NORTH
oil on canvas 24x29 in./61x74 cm. Dated: 1984 S#S
\$2,000/2,500



80
watercolour on paper
KENNETH LOCHHEAD

80
#21 REGULAR POSITION, 1979
19.25 x 25 in. / 49 x 64 cm.
\$900/1,200



82
oil on particle board
HENRI MASSON

82
THE HUNTER
10 x 12 in. / 25 x 30 cm.
\$1,500/2,000



32
oil on canvas
DULCIE FOO FAT

32
DRUMHELLER RED STONE
56.5 x 38 in. / 144 x 97 cm.
\$2,000/3,000



99
gouache on paper
NORVAL MORRISSEAU

99
DEMIGOD OF MEDICINE, 1965 ca.
30 x 22 in. / 76 x 56 cm.
\$2,000/3,000

LEVIS

FINE ART AUCTIONS & APPRAISALS

A DIVISION OF ARTBANK INC.

PREVIEW

Tuesday, January 16, 2001
from noon. to 5 p.m.
& 7 to 10 p.m.

Wednesday, January 17, 2001
from 10 a.m. to 5 p.m

AUCTION LOTS 1-180

Wednesday, January 17, 2001
at 7:00 p.m.

The Hyatt Regency Calgary

700 Centre Street SE,
Calgary, Alberta

AUCTIONEER'S NOTES

I would like to thank Petro-Canada and the Calgary Children's Initiative for asking me to sell this very impressive collection of Canadian contemporary art. Petro-Canada began its collection some 20 years ago in a clear demonstration of support to the visual arts in Canada. The collection has a breadth and scope that shows the company's commitment to that ideal. For many artists in the auction, it will be their first appearance on the auction market.

I commend Petro-Canada's process of de-accessioning their collection. The company first set aside 180 paintings, prints and sculpture for this benefit auction. Of the remainder, they retained a certain number for their continued collection. They also donated other works to cultural institutes such as the Royal BC Museum, the Glenbow Museum, the Nickle Arts Museum and others. In a very unique initiative, a number of works of art were sold to employees through an on-line auction. The \$160,000 in proceeds from this auction will launch a new fine arts scholarship program at the Alberta College of Art & Design.

In addition, I would like to thank Anna Gardner who has agreed to help me with this auction. I trust you will extend her the same help and courtesy that you have shown me over the last nine years. She has been a great help in trying to maintain some semblance of order in the office as we completed the last auction while starting this project - thank you Anna. And as it is that time of year, both Anna and I wish you the best for the holiday season and a very prosperous, healthy and safe New Year.

I hope you will join us in this celebration of Canadian art from the latter half of the twentieth century made possible by the generosity for which Petro-Canada is so well known.

For more information contact: Doug Levis or Anna Gardner

LEVIS FINE ART AUCTIONS & APPRAISALS

1711 - 10 Avenue S.W. #128
Calgary, Alberta T3C 0K1

TEL: (403) 541-9099 FAX: (403) 541-9097

www.levisauctions.com or e-mail: mail@levisauctions.com

CATALOGUE \$20 • \$22 BY MAIL (PLUS G.S.T.)
ISBN 1203-3081

STANDARD CONDITIONS OF SALE

1. LEVIS Fine Art Auctions & Appraisals, or LEVIS or "we" refer, for all purposes relating to this auction, to the corporation LEVIS Fine Art Auctions & Appraisals, a Division of Artbank Incorporated.
 2. A Buyer's Premium of 15% up to & including \$25,000, 10% thereafter of the Hammer Price shall be added thereto and is payable by the Purchaser as part of the total purchase price.
 3. Goods and Services Tax of 7% will be charged on the Hammer Price and Buyer's Premium on all lots.
 4. Although LEVIS Fine Art Auctions & Appraisals take care and diligence in their catalogue of the lots offered for auction, all Property is sold "as is" and neither we nor our agents, auctioneers or other personnel nor the Consignor make any warranties or representations as to the correctness of the catalogue or other descriptions contained therein, of the physical condition, size, authenticity, or quality. Prospective bidders should inspect the property before bidding to determine its condition, size and whether the purchaser acquires any reproduction rights in the property.
 5. Notwithstanding the preceding conditions, if within fourteen days of the sale of any lot, the Purchaser can provide us the written opinion of two acknowledged experts that the art, as outlined in the glossary, is in effect mis-described in substantial particular in the catalogue and within fourteen days after such notice the Purchaser returns the lot to us in the same condition as when sold, we as agent for the Consignor will rescind the sale and refund the Purchase Price received by them.
- Due to the time requirements, expense and sometimes changing scholarly opinion of some artist's work, LEVIS cannot guarantee authentication on paintings, drawings, graphic art or sculpture created before 1900.
6. We reserve the right to withdraw any property before the moment of sale.
 7. Unless otherwise announced by the auctioneer, all bids are per lot as numbered in the catalogue.
 8. We reserve the right to reject any bid. The highest bidder acknowledged by the auctioneer will be the purchaser. In the event of a dispute between bidders, or in the event of doubt on the part of us as to the validity of any bid, the auctioneer will have the final discretion either to determine the successful bidder or to reoffer and resell the article in dispute. If any dispute arises after the sale, our sale record is conclusive.
 9. If the auctioneer decides without regard to the printed estimated price that any opening bid is below the value of the lot offered, he may reject the bid and withdraw the lot from the sale, and if, having acknowledged an opening bid, he decides that any advance thereafter is insufficient, he may reject the advance.
 10. On the fall of the auctioneer's hammer or indication of being sold, title to the offered lot will pass to the highest bidder acknowledged by the auctioneer, subject to conditions set forth herein, and such bidder thereupon will pay the full purchase price therefor or such part as we may require. All property must be removed from our premises by the purchaser at their expense not later than one business day following its sale and if is not so removed, a handling charge of 5% of the purchase price per month until removal of the property will be payable by the purchaser.
 11. Payment in full must be made on the day of the sale by cash, certified cheque, travellers cheque, Visa, MasterCard or bank draft, unless other arrangements have been made with the auction house prior to the sale.

GUIDE FOR PROSPECTIVE BUYERS

A Buyer's premium of 15% up to & including \$25,000, 10% thereafter will be added to the hammer price of all Property sold. This premium is payable by all purchasers.

GOODS AND SERVICES TAX

G.S.T. of 7% will be charged on the Hammer Price and on the Buyer's Premium.

RESERVES

A reserve is the confidential minimum price agreed between the seller and the auction house, below which the art work will not ordinarily be sold. We do not accept reserve prices that would exceed the printed estimate. As agents for the consignor, we may place bids during the auction if the current bid is below the reserve on the lot being offered.

ESTIMATES

As a service to our clients, we provide an estimate which in our opinion the lot offered may sell for based upon previous auctions results by the artist or something similar. These are only estimates and are not appraised values. In addition, estimates are worked on well in advance of the publication of the catalogue. Please contact the office on any particular lot. In the case of a lot with a reserve price, we do not allow the reserve to exceed the printed estimate.

INFORMATION FOR CONSIGNORS

We are always looking for good art work to sell at auction. If you have something you think we may be interested in, please give us a call at our offices for a free confidential appointment.

Standard commission rates are as follows:

- 10% for lots selling for \$2,500 or more
- 20% for lots selling for under \$2,500

If there is a reserve price and the lot fails to sell, there is a reserve bid fee of 5% of the reserve price (minimum charge of \$100)

While the consignor is responsible for the reserve fee and shipping to and from the auction, the auction company is responsible for the following:

- advertising
- cataloguing and/or photography expenses
- insurance

REGISTRATION

You should arrive before the auction to register for the auction. You will receive a card to fill out with a number on it, your bidding number. Please ensure that you have established credit references before the auction.

BIDDING

If you are successful on a particular lot, you will be requested to show your bidder number.

ABSENTEE BIDS

If you are unable to attend the auction, you may use the enclosed Absentee Bid form at the end of the auction catalogue. We will act on your behalf to try and purchase the lot(s) of your choice for the lowest possible price up to the top amount you indicate.

PAYMENT

Payment may be made by cash, certified cheque, MasterCard, Visa, or bank draft. Payment must be made in full the day of the auction.

REMOVAL OF PROPERTY

Once payment has been made in full, you may pick up your art work. Art work left with the auction company are left at the purchasers risk and peril.

INFORMATION ON APPRAISALS

Written appraisals can be prepared for insurance, probate, family division or other purposes. Appraisal fees vary according to circumstance so please contact the office regarding particulars. A partial rebate of our fee will be made on appraised property subsequently accepted by us for sale.

CATALOGUE SUBSCRIPTIONS

Catalogue subscriptions receive the highest priority and automatically receive auction results after the auction. Subscription rates are available for one or two year periods. Please contact the office for more information.

**NEXT AUCTION:
MAY 6&7, 2001**

GLOSSARY

The following terms are used in the catalogue and description of the artists and lots:

Walter Joseph Phillips – artist

A.S.A., C.S.P.W.C., R.C.A. – associations – see below

[1884-1963] – date of birth and death of artist

Canadian – nationality

see – references for particular artist

While this is the highest category of authenticity and is in our opinion, a work by the artist, it is made without qualifications as to authorship.

PLEASE NOTE: Due to the time requirements, expense and sometimes changing scholarly opinion of some artist's work, LEVIS can not guarantee authentication on paintings, drawings, graphic art or sculpture created before 1900.



– illustrated colour

[b.1952] – date of birth of artist

ca. – circa

fl. – flourished in and around this time period

signed/dated/titled – in our opinion, the work has been signed/dated/titled by the artist unless otherwise noted

signed in plate/block – in our opinion the art work was signed/dated/titled by the artist in the plate before printing

bears signature/date/title – in our opinion the signature/date/title is by a hand other than the artist

verso – on the reverse side

archival mat – front mat is of archival material

archival material throughout – work has been examined out of the frame and in our opinion all framing is of archival material

Denglas – glazed with Denglas material

unframed – all work is framed unless noted as unframed

size – size is always height by width (by depth for sculpture) in inches rounded down to the nearest quarter of an inch and to the nearest whole centimetre

Ref – reference

Prov – provenance – indicates previous owners either by way of labels and/or other information. This is not necessarily an indication of present ownership.

LOT OF ?? – more than one item in lot

ESTIMATE – an estimate of what the art work may sell for but it is only intended as an estimate

The following abbreviations are used for professional associations and societies:

A.A.F. – Alberta Art Foundation/
Alberta Foundation for the Arts

A.C.A. – Alberta College of Art

A.F.A. – Alberta Foundation for the Arts/
Alberta Art Foundation

A.G.G.V. – Art Gallery of Greater Victoria

A.G.O. – Art Gallery of Ontario

A.R.C.A. – Associate Royal Canadian
Academy of Arts (1880)

A.R.E. – Associate Royal Society of
Painter-Etchers and Engravers

A.S.A. – Alberta Society of Artists (1931)

B.C.S.A. – British Columbia Society of Artists

C.G.P. – Canadian Group of Painters (1933-69)

C.P.E. – Society of Canadian Painter-Etchers
and Engravers (1916-76)

C.S.G.A. – Canadian Society of Graphic Art
(1923-76)

C.S.P.W.C. – Canadian Society of Painters in
Water Colours (1925)

Dict. – Dictionary

E.A.G. – Edmonton Art Gallery

F.C.A. – Federation of Canadian Painters (1941)

M.S.A. – Manitoba Society of Artists

N.G.C. – National Gallery of Canada

O.S.A. – Ontario Society of Artists (1872)

P.S.C. – Pastel Society of Canada

R.A. – Royal Academy (1768)

R.B.A. – Royal Society of British Artists

R.C.A. – Royal Canadian Academy of Arts (1880)

R.E. – Royal Society of Painter-Etchers & Engravers

R.S.A. – Royal Scottish Academy

R.M.S. – Royal Miniature Society

S.W.E. – Society of Wood Engravers (1919)

V.A.G. – Vancouver Art Gallery

WEDNESDAY, JANUARY 17 AT 7 P.M.
LIVE AUCTION, LOT #1 - 180

PLEASE NOTE

Buyer's Premium: a Premium of 15% up to & including \$25,000, 10% thereafter will be added to the Hammer Price of all property sold. The Premium is payable by all purchasers.
Goods and Services Tax: G.S.T. of 7% will be charged on the total of the Hammer Price and on the Buyer's Premium.

Additional notes may be found at the front of the catalogue for prospective buyers.

ALEXIS ARTS

[b.1940] Canadian
listed in *Guide Vallee, III Edition*, by F.Vallee,
pub. Le Guide Vallee, pg.145

- 1** COMME DE NACRE, CHEMIN,
FERTILE CREEK, ST. PIERRE, P.Q.
oil on canvas
16 x 20 in. / 41 x 51 cm. Dated: 1981
signed and dated lower left; signed, titled and dated verso
Prov: Galerie Bernard Desroches, Montreal, label verso
ESTIMATE: \$400/600



- 2** AUPRES ST. URBAIN, P.Q.
oil on canvas
14 x 18 in. / 36 x 46 cm. Dated: 1981
signed and dated lower right; signed,
titled and dated verso
Prov: Galerie Bernard Desroches, Montreal, label verso
ESTIMATE: 300/500



ANNE MEREDITH BARRY

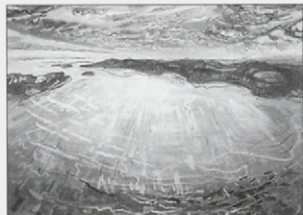
[b.1932] Canadian
RCA

see *Anne Meredith Barry: Newfoundland Work*, by C.Koch, Art Gallery, Memorial University, 1991; biography in *Yukon Permanent Art Collection*, by the Friends of the Gallery, pg.3, 1993 and *The Ontario Collection*, by F.Bayer, pg.298, Ontario Heritage Foundation; see *Shell Canada Collection*, by B.Shammas, pg.4, Shell Canada, Calgary, 1977; represented by Gallery One, Toronto and Masters Gallery, Calgary

- 3** UNTITLED - EARLY SNOW
mixed media on paper
29.75 x 22 in. / 76 x 56 cm.
signed lower right
ESTIMATE: 900/1,200



- 4** UNTITLED - FROZEN ISLANDS NUMBER 1
mixed media on paper
22 x 29.75 in. / 56 x 76 cm.
signed lower right; archival mat
ESTIMATE: 900/1,200



JOSEPH IAIN WILSON BAXTER

[b.1936] Canadian

biography and other examples in *N.G.C. Vol.1, A-F*, ed.C.Hill, pg.63; biography in *Dict. of Canadian Artists - Vol.1*, by C.MacDonald, Vol.1, addendum; co-founder of N.E. Thing Co. [1966-1978]; included in *La Collection Tableau Inaugural*, by P.Gagnon, M. d'art Contemporain, 1992; *Contemporary Canadian Art*, by D.Burnett/M.Schiff, pg. 183, Hurtig Pub., 1983; *Visions: Contemporary Art in Canada*, ed.R.Bringhurst et al, pg. 194, Douglas and McIntyre, 1983; represented by Catriana Jefferies Gallery, Vancouver

5 STILL LIFE WITH BURN #3/25

mixed media with lithograph on paper
30 x 22 in. / 76 x 56 cm.

signed, titled and numbered along bottom; embossed chop lower left; with Polaroid photographs attached; archival mat

Ref: comparative example in

Contemporary Canadian Art, pg.80

ESTIMATE: 200/300

**DEREK MICHAEL BESANT**

[b.1950] Canadian

ASA, CSPWC, RCA

see *Derek Michael Besant / Diagrams*, by R.Graburn, Nickle Arts Museum, 1985; *Alberta Art, Works from the A.A.F.*, by L.Schmidt; *Printmaking in Alberta 1945-1985*, by B.Cochran, pg.59; *Artists of Alberta*, by S.Baker, pg.51, U. of A. Press, 1980; *Survey Alberta 88*, by A.MacKay, pg.9, Alberta College of Art, 1988; included in *Contemporary Canadian Art*, by D.Burnett/M.Schiff, pg. 276, Hurtig Pub., 1983

6 UNTITLED - INTERSECTION #3

watercolour on paper

32.5 x 32.75 in. / 83 x 83 cm. Dated: 1984

signed and dated lower centre

ESTIMATE: 500/700

**DAVID LLOYD BLACKWOOD**

[b.1941] Canadian

CPE, CSPWC, OSA, RCA

see *David Blackwood Prints 1962-1984*, by P.Grattan, Art Gallery, Memorial University of Newfoundland; *The Art of David Blackwood*, by W.Gough, McGraw Hill Ryserson, 1988; biography and other examples in *N.G.C. Vol.1, A-F*, ed.C.Hill, pg.96; represented by Gallery One, Toronto, Heffel Gallery, Vancouver and New Zones Gallery, Calgary

**7 CAPTAIN LLEW KEAN, PASSING #42/50**

colour etching on paper

21.75 x 27.5 in. / 55 x 70 cm. Dated: 1979

signed, titled, dated and numbered along bottom; archival mat

Ref: illustrated in *Gough*, plate 6 and included in *Grattan 1962-1984*, cat. #40

ESTIMATE: 2,000



- 8** WESLEYVILLE: MARCH ICE RAFT #6/50
 colour etching on paper
 19.75 x 31.75 in. / 50 x 81 cm. Dated: 1981
 signed, titled, dated and numbered along bottom;
 archival mat
 Ref: illustrated *Gough*, plate 34 in chapter Home in
 Wesleyville; and included in *Gratton 1962-1984*, cat. #48
 ESTIMATE: 2,000/2,500



- 9** RESETTLEMENT #6/50
 colour etching on paper
 14.75 x 35.5 in. / 37 x 90 cm. Dated: 1982
 signed, titled, dated and numbered along bottom;
 archival mat
 Ref: included in *Gratton 1962-1984*, cat. #55
 ESTIMATE: 2,500/3,500



DAVID BOLDOC

[b.1945] Canadian
 see *David Bolduc, Recent Work*, S.Paikowsky,
 Sir George Williams Art Galleries, Concordia
 University, 1979; biography and other
 examples in *N.G.C. Vol.1, A-F*, ed.C.Hill, pg.105;
 represented by Paul Kuhn Fine Arts, Calgary
 and Thielsen Galleries, London

- 10** NIGHT JULY
 acrylic on canvas
 36 x 48 in. / 91 x 122 cm. Dated: 1982
 signed, titled and dated verso;
 diptych [28 inches wide per panel] framed together
 ESTIMATE: 1,500/2,000



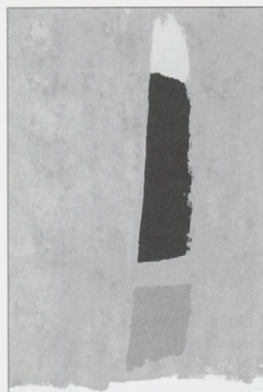
- 11** SUMMER, 1979
 watercolour on paper
 29.5 x 21.75 in. / 75 x 55 cm. Dated: 1979
 signed, titled and dated along bottom
 Prov: Klonaridis, Inc. label verso
 ESTIMATE: 1,000/1,200



JOHN [JACK] HAMILTON BUSH

[1909-1977] Canadian
 CGP, CSGA, CSPWC, ARCA
 see *Jack Bush*, ed. K.Wilkin, McClelland and
 Stewart, 1984; *The Heritage of Jack Bush, a
 Tribute*, by K.Carpenter, Robert McLaughlin
 Gallery, 1971; biography and another example
 in *A.G.O.*, by the A.G.O., pg.52; 1975-76 *The
 Canadian Canvas*, by Time Canada Ltd., 1975;
 exhibition list in *R.C.A.A.*, by E.McMann, pg.59

- 12** PURPLE THRUST #65/100
 colour silkscreen on paper
 29.25 x 21.5 in. / 74 x 55 cm. Dated: 1974
 signed, titled and numbered along bottom; archival mat
 Ref: *catalogue #15* in *Woltjen/Udell catalogue*
 from a suite of 5 in edition of 100 [+15 AP + 4 HC],
 published by Waddington Graphics, London, England
 ESTIMATE: 1,000/1,500



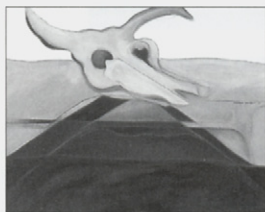
JOANE CARDINAL-SCHUBERT

[b.1942] Canadian

ASA, RCA

see *A Measure of Success: Graduates of the A.C.A 1963-1984*, by L.Greenwood, pg.110; *Time for Dialogue*, by J.Cardinal-Schubert, pg.49, Calgary Aboriginal Awareness Society, 1992; *Indigena, Contemporary Native Perspectives*, ed.G.McMaster, pg.130, Can. Museum of Civilization, 1992; *Alberta Biennial of Contemporary Art 1998*, by C.Mastin C.Rowston, pg.13, E.A.G. Glenbow Museum, 1998; *A Journey - Twenty Year Retrospective*, Masters Gallery, Calgary, 1999

- 1** UNTITLED - CEREMONIAL MOUND
oil on canvas
30 x 36 in. / 76 x 91 cm. Dated: 1981
signed and dated centre right side
ESTIMATE: 700/900

**QUENTIN CARON**

[fl.1978] Canadian

biography and another example in *A Measure of Success: Graduates of the A.C.A 1963-1984*, by L.Greenwood, pg.16

- 1** UNTITLED - RED DOOR
watercolour on paper
27 x 19.25 in. / 69 x 49 cm. Dated: 1981
signed and dated lower right; archival mat
ESTIMATE: 300/400

**CLIFTON ROY [C.R.] CHEEK**

[b.1937] American

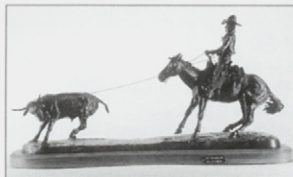
represented by Gainsborough Galleries, Calgary; has exhibited for many years with the Calgary Stampede



- 15** EIGHT SECONDS UP #7/25
bronze sculpture on wood base
27 x 18 x 17.5 in. / 69 x 46 x 44 cm.
signed and numbered on base
ESTIMATE: 2,500/3,500



- 16** THE WRANGLER #6/25
bronze sculpture on wood base
18 x 32 x 7 in. / 46 x 81 x 18 cm.
signed and numbered on base; on wooden pedestal
ESTIMATE: 2,500/3,500

**JACK LEE COWIN**

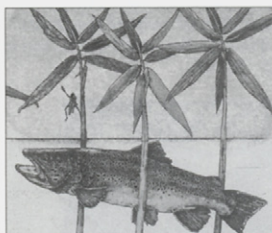
[b.1947] Canadian

see *Country Pleasures, The Angling Art of Jack Cowin*, by A.Oko, Fifth House, 1984 and *N.G.C. Vol.1, A-F*, ed.C.Hill, pg.222; biography in *Biographical Dict. of Saskatchewan Artists - Men*, by M.Newman, pg.55, Fifth House Pub., 1994; represented by Susan Whitney Gallery, Regina, Masters Gallery, Calgary

- 17** SOMEWHERE OVER THE RAINBOW
[WESTERN CANADA TROUT SERIES] #42/50
hand coloured etching on paper
17.5 x 23.5 in. / 44 x 60 cm. Dated: 1980
signed, titled, dated and edition number along bottom;
archival mat
ESTIMATE: 500/600



- 18** FOOTHILLS BROWN
[WESTERN CANADA TROUT SERIES] #38/75
hand coloured etching on paper
16.75 x 18.5 in. / 43 x 47 cm. Dated: 1981
signed, titled, dated and edition number along bottom;
archival mat
ESTIMATE: 500/600



- LYNNE CROUCH**
[b.1944] Canadian
included in *Site Specific* exhibition curated by
Mary-Beth Laviolette at the Art Gallery of the
South Okanagan and Whyte Museum, Banff

- 19** STEPHENS AVENUE MALL #1
oil on canvas
33.5 x 59 in. / 85 x 150 cm. Dated: 1983
signed, titled and dated verso
Prov: Nolan Drysdale Fine Art Framers, Calgary,
label verso
ESTIMATE: 1500/2000

**GREG CURNOE**

[1936-1992] Canadian
see *Greg Curnoe, Retrospective*, by
P.Theberge, N.G.C., 1982; biography and other
examples in *A.G.O.*, by the A.G.O., pg.95; *N.G.C.*
Vol.1, A-F, ed.C.Hill, pg.238; *Landmarks of*
Canadian Art, by P.Mellon, pg.244; included
in www.artcyclopedia.com; represented by
Thiesen Galleries, London

- 20** APPIN AUG.30/78
watercolour on paper
6 x 9 in. / 15 x 23 cm. Dated: 1979
signed upper right, titled and dated lower centre;
sketch book perforations left margin; archival mat
Ref: the artist visited Halifax as well as Ottawa and in the
summer traveled by train to Moosonee in 1979; see *Greg*
Curnoe, pg.62-63 for information on this time period
ESTIMATE: 900/1200

**NORMAN HUGH DALLIN**

[b.1948] Canadian
biography in *Biographical Dict. of Sask-*
atchewan Artists - Men, by M.Newman, pg.61,
Fifth House Pub., 1994; represented by Virginia
Christopher Galleries, Calgary

- 21** MAIN CHANNEL
oil on canvas
44 x 68 in. / 112 x 173 cm. Dated: 1983
signed, titled and dated verso
ESTIMATE: 1,500/2,000



RICHARD THOMAS DAVIS

[b.1947] Canadian biography at www.rtdavis.com; included in www.artcyclopedia.com; represented by Atelier Gallery, Vancouver, Zwicker's Gallery, Halifax

- 2** **2** OUTCROP #A.P.
silkscreen on paper
23 x 31 in. / 58 x 79 cm. Dated: 1978
signed, titled, dated and numbered along bottom
ESTIMATE: 400/500

**GERTRUDE ELIZABETH [BETTY] MARY DAVISON**

[b.1909] Canadian biography and other examples in *N.G.C. Vol.1, A-F*, ed.C.Hill, pg.261

- 2** **3** WHITE WEDDING CIRCA 1928 #35/35
painted paper cast
11 x 14 in. / 28 x 36 cm. Dated: 1979
signed, titled, dated and numbered along bottom
ESTIMATE: 300/400

**DAVID DENYSE**

[b.1952] Canadian biography and another example in *Alberta College of Art Staff Exhibition*, by K.Sturdy, 1979 and *Selected Prints: Aspects of Canadian Printmaking*, by J.Noakes, Mira Godard Gallery, Toronto, 1979

- 2** **4** FIVE DAYS LATER #T.P.
colour lithograph on paper
27.5 x 20 in. / 70 x 51 cm. Dated: 1978
signed, titled, dated and numbered along bottom
ESTIMATE: 200/300



- 2** **5** RAIN FOREST #4/40
colour lithograph on paper
29 x 21.5 in. / 74 x 55 cm. Dated: 1981
signed, titled, dated and numbered along bottom
Prov: Mira Godard Gallery, Toronto/Calgary, label verso
ESTIMATE: 200/300

**WALTER DROHAN**

[b.1932] Canadian ASA, RCA
see *Founders of the A.C.A.*, by V.Greenfield, pg.78, for biography and *Artists of Alberta*, by S.Baker, pg.2, for another example; *Spaces and Places - Eight Decades of Landscape Painting in Alberta*, by J.Ironside, pg.98; included in *Jubilee Exhibition of Alberta Paintings*, by J.Nicoll, pg.12, Calgary Allied Art Centre, 1955; represented by Wallace Galleries, Calgary

26

DE HAVILLAND 'TIGERMOTH' [UK]
SOUTH AFRICAN AIR FORCE, 1943
oil on canvas
28 x 36 in. / 71 x 91 cm. Dated: 1978
signed lower right; titled verso
Prov: Canadian Art Galleries, Calgary, label verso
ESTIMATE: 2,000/2,500



27

BETWEEN CASTS
oil on canvas
37.5 x 48 in. / 95 x 122 cm. Dated: 1983
signed lower left; titled and dated verso
ESTIMATE: 2,000/2,500



PAT DURIE
20th century Canadian

28 UNTITLED - WINDY PINES
oil on particle board
24 x 30 in. / 61 x 76 cm.
signed lower right
ESTIMATE: 300/400

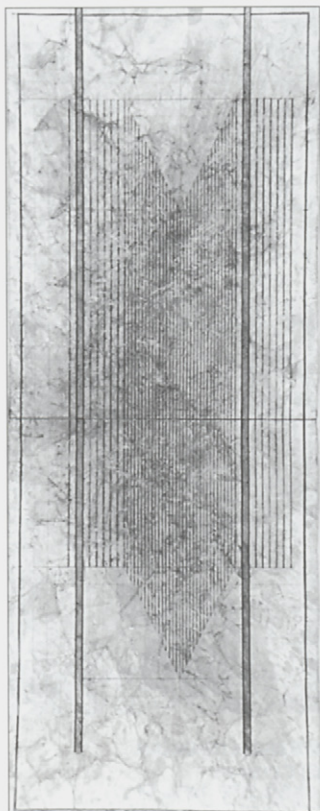


CHRISTIAN ECKART

[b.1959] Canadian
included in www.artcyclopedia.com; represented by Trepanier Baer Gallery, Calgary, Janis Gallery, NY, Rhona Hoffman Gallery, Chicago, Galerie Thaddaeus Ropac, Paris

29

UNTITLED
mixed media on paper
59.5 x 22 in. / 151 x 56 cm. Dated: 1984 ca.
unsigned; on two sheets of paper each 29.75 x 22
Ref: probably from his student days at the
Alberta College of Art
ESTIMATE: 2,000/2,500

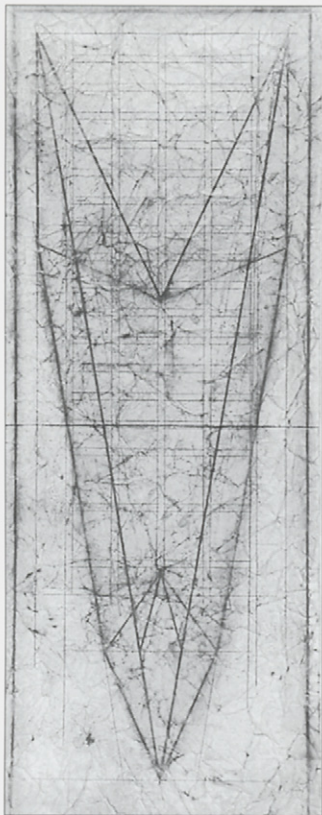


ECKKART cont.



UNTITLED

mixed media on paper
59 x 22 in. / 150 x 56 cm. Dated: 1984 ca.
unsigned; on two sheets of paper each 29.75 x 22
Ref: probably from his student days at the
Alberta College of Art
ESTIMATE: 2,000/2,500



31

UNTITLED

colour pencil on paper
23.75 x 17.75 in. / 60 x 45 cm. Dated: 1980
signed and dated lower left; archival mat
ESTIMATE: 200/300



DULCIE FOO FAT

[b.1946] Canadian
ASA

exhibition *Dance With Minutiae: The Painting of Dulcie Foo Fat*, at the Nickle Arts Museum, 1989; see *Spaces and Places – Eight Decades of Landscape Painting in Alberta*, by J.Ironside, pg.118 for another example of the artist's work in the collection of the A.F.A.; see *Shell Canada Collection*, by B.Shammas, pg.16, Shell Canada, Calgary, 1977; represented by Wallace Galleries, Calgary



DRUMHELLER RED STONE

oil on canvas
56.5 x 38 in. / 144 x 97 cm.
signed lower centre
Prov: Aggregation Gallery, Toronto, label verso
ESTIMATE: 2,000/3,000



JOHN KENNETH ESLER

[b.1933] Canadian
ASA, CSGA, CPE, MSA, RCA
see *35 Years and 15 Minutes*, prints by John Kenneth Esler, by S.Ford, Nickle Arts Museum, 1994; *Founders of the A.C.A.*, by V.Greenfield, pg.80 and *Printmaking in Alberta 1945-1985*, by B.Cochran, pg.66 as well as *N.G.C. Vol.1, A-F*, ed.C.Hill, pg.300; *Dict. of Canadian Artists – Vol.1*, by C.MacDonald, pg.192

SUSAN FORD

[b.1944] Canadian
ASA

biography and other examples of the artist's work in *Printmaking in Alberta 1945-1985*, by B.Cochran, pg.70; see *Shell Canada Collection*, by B.Shammas, pg.16, Shell Canada, Calgary, 1977



BOUQUET #13/25
colour etching on paper
13.5 x 17.5 in. / 34 x 44 cm.
signed, titled and numbered along bottom; archival mat
ESTIMATE: 100/150



THOMAS [TOM] DEVANY FORRESTALL

[b.1936] Canadian
ARCA

included in *Artists of Atlantic Canada*, D.Andrus, N.G.C., 1966; *Brown, Danby, Forrestall, Pratt*, P.Duval, Centre Culturel Canadien, Paris, 1974; *Aspects of Realism*, by P.Duval et al, Rothmans, 1976; biography in *Dict. of Canadian Artists*, by C.MacDonald, Vol.1, pg.218; exhibition list in *R.C.A.A.*, pg.130 and *M.M.F.A.*, by E.McMann, pg.129; represented by Kinsman Robinson Gallery, Toronto



CATCHING #43/145
colour lithograph on paper
18 x 26 in. / 46 x 66 cm. Dated: 1980
signed, titled, dated and numbered along bottom;
archival mat
ESTIMATE: 200/300



EDWARD WILLIAM [TED] GODWIN

[b.1933] Canadian
ASA, RCA

see *Ted Godwin, the Tartan Years 1967-1976*, by A.Davis, Nickle Arts Museum, 1999; *Lower Bow, A Celebration of Wilderness, Art and Fishing*, by T.Godwin, MacKenzie Art Gallery exhibition, 1991; *N.G.C. Vol.2, G-K*, ed.C.Hill, pg.37; *Founders of the A.C.A.*, by V.Greenfield, pg.83; work included in Mackenzie Art Gallery, www.mackenzieartgallery.sk.ca/



SPRING BELANGER CREEK
oil on particle board
18 x 23.75 in. / 46 x 60 cm.
signed and titled verso
ESTIMATE: 1,500/2,000



BLUE WATER
oil on plywood
18 x 24 in. / 46 x 61 cm.
titled verso and artist's stamp with inscription
'Western Summer'
Prov: Glenmore Gallery, Toronto, stamp verso
ESTIMATE: 1,500/2,000



GODWIN cont.

37

FALL ON THE LITTLE BOW
watercolour on paper
28.25 x 20.75 in. / 72 x 53 cm. Dated: 1979
signed lower right; archival mat
Prov: Bau-Xi Gallery, Vancouver/Toronto label verso
ESTIMATE: 800/1,200



38

BEAVER POND
watercolour on paper
28.5 x 21 in. / 72 x 53 cm.
unsigned
Prov: Canadian Art Galleries, Calgary, label verso
ESTIMATE: 800/1,200

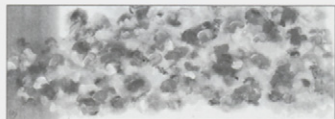
KATHLEEN MARGARET
HOWITT GRAHAM

[b.1913] Canadian
RCA

biography and other examples in *The Heritage of Jack Bush, a Tribute*, by K.Carpenter, Robert McLaughlin Gallery, 1971; biography and another example in *1975-76 The Canadian Canvas*, by Time Canada Ltd., 1975; biography and another example in *Selections from the Westburne Collection*, by K.Wilkin, pg.32, Edmonton Art Gallery, 1982; included in *Contemporary Canadian Art*, by D.Burnett/M.Schiff, pg. 266, Hurtig Pub., 1983; represented by Douglas Udell Gallery, Edmonton / Vancouver

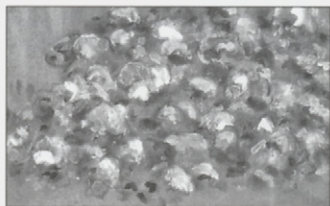
39

BEGINNING WITH WINE
11 x 29.5 in. / 28 x 75 cm. Dated: 1981
signed and dated lower right; paper manufacturer chop
lower left; signed, titled and dated on backing;
archival mat
ESTIMATE: 700/900



40

MILLEFIORI [SUMMER #8]
acrylic on paper
12.75 x 17.75 in. / 32 x 45 cm. Dated: 1981
signed, titled and dated on backing; archival mat
ESTIMATE: 700/900



JULIUS EDWARD LINDSAY GRIFFITH

[b.1912] Canadian
CSGA, CSPWC, FCA, OSA, RCA
see *A.G.O.*, by the A.G.O., pg.145 and *Images of the Land, 1919-1945*, by P.Ainslie, pg.99;
biography in *Dict. of Canadian Artists*, by C.MacDonald, Vol.2, pg.323; exhibition list in *R.C.A.A.*, by E.McMann, pg.160

- 41** UNTITLED – SHIPS WAITING
watercolour on paper
21.25 x 29.25 in. / 54 x 74 cm. Dated: 1984
signed and dated lower right; archival mat
ESTIMATE: 500/600



ALEXANDRA [SANDRA] HAESEKER

[b.1945] Canadian
ASA, CSPWC

see *A Measure of Success: Graduates of the A.C.A.*, by V.Greenfield, pg.83, A.C.A., 1985; *Artists of Alberta*, by S.Baker, pg.57, U. of Alberta Press, 1980; *Selected View: The Longstaffe Collection 1959-1984*, by L.Farrell-Ward, V.A.G., pg.60; *Western Untitled*, by T.Heath, 1976; represented by Douglas Udell Gallery, Edmonton / Vancouver

- 42** UNTITLED – BULL'S EYE
watercolour on paper
20.5 x 28.25 in. / 52 x 72 cm. Dated: 1981
signed and dated lower right
ESTIMATE: 1,200/1,500



- 43** BELOW ZERO #4/28
colour lithograph on paper
22.25 x 29.75 in. / 57 x 76 cm. Dated: 1982
signed, titled, dated and numbered along bottom;
embossed chop lower right; archival mat
ESTIMATE: 200/300



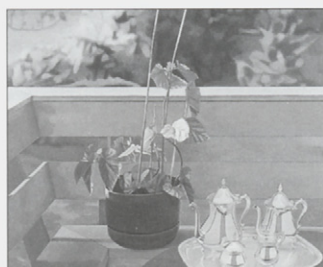
- 44** LAST SUMMER #8/43
colour lithograph on paper
22 x 27.75 in. / 56 x 70 cm. Dated: 1983
signed, titled, dated and numbered along bottom;
archival mat
ESTIMATE: 200/300



DAVID HAIGH

[b.1936] Canadian
represented by Zwicker's Gallery, Halifax;
studied with David Hockney at art school

- 45** SUNDECK
oil on canvas
32.5 x 35.75 in. / 83 x 91 cm. Dated: 1985 ca.
signed lower right; bears title on label verso
Prov: Zwicker's Gallery, Halifax, label verso
ESTIMATE: 1,500/2,000



ANN HARBUZ

[b.1908] Canadian
biography in *Biographical Dictionary of Saskatchewan Artists, Women Artists*, by M.Newman, pg.71, Fifth House Pub., 1990; see other examples in *Grassroots Saskatchewan*, by D.Thauberger, Norman MacKenzie Art Gallery, 1976; work included in Mackenzie Art Gallery, www.mackenzieartgallery.sk.ca/

HARBUZ cont.

4
6


UKRAINIAN LADY BAKING BREAD
acrylic on fabric over particle board
22 x 28 in. / 56 x 71 cm. Dated: 1980
signed and dated lower right; bears title on paper
attached verso
ESTIMATE: 400/600

4
7

SLACKING LIME
acrylic on canvas
16.5 x 24 in. / 42 x 61 cm. Dated: 1980
signed and dated lower right; bears title on label verso
ESTIMATE: 300/500



JOHN HARTMAN

[b.1950] Canadian
recent exhibition *Big North The Paintings of John Hartman*, by B.Meehan, London Regional Art Museum, 1999 and traveled to the Nickle Arts Museum, Calgary; represented by Mira Godard, Toronto and Paul Kuhn Fine Arts, Calgary

4
8


THE ARTIST'S HOME IN WINTER
mixed media on canvas
41 x 57.5 in. / 104 x 146 cm. Dated: 1983
signed with initial lower right; signed,
titled and dated verso
ESTIMATE: 4,000/5,000

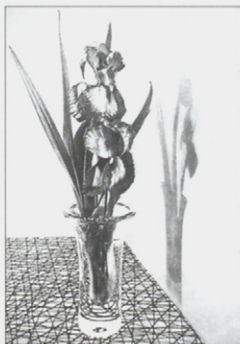


JOHN CARL HEYWOOD

[b.1941] Canadian
CPE, OSA, RCA
biography and another example in *N.G.C. Vol.2, G-K*, ed.P.Landry, pg.128; biography and another example in *Selected Prints: Aspects of Canadian Printmaking*, by J.Noakes, Mira Godard Gallery, Toronto, 1979; included in *La Collection Tableau Inaugural*, by P.Gagnon, M. d'art Contemporain, 1992; included in www.artcyclopedia.com

4
9

UNTITLED ETCHING KV102 #1/50
etching on paper
16.75 x 10.75 in. / 43 x 27 cm. Dated: 1981
signed, titled, dated and numbered along bottom;
archival mat
ESTIMATE: 200/300

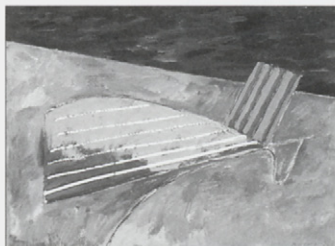


TOM HOPKINS

[b.1944] Canadian
represented by Mira Godard, Toronto and Equinox Gallery, Vancouver

5
0


UNTITLED - SUNDAY
mixed media on paper
21.75 x 29 in. / 55 x 74 cm.
signed lower right; archival mat
ESTIMATE: 1,200/1,500



51 UNTITLED – NOVA SCOTIA SERIES #6
mixed media on paper
27.5 x 26.25 in. / 70 x 67 cm.
signed lower right; archival mat
ESTIMATE: 1,200/1,500



INUIT
– **AGNES ALEEKUK**
[b.1955] Canadian
listed in *Inuit Artist Index, January 1990* published by Indian and Northern Affairs Canada

52 INUKSHUIT #34/50
colour stencil on paper
15.25 x 19.25 in. / 39 x 49 cm. Dated: 1982
signed, titled, dated, numbered and inscribed 'Holman'
along bottom; embossed chops lower right
ESTIMATE: 200/300



– **KENOJUAK ASHEVAK**
[b.1927] Canadian
RCA
see *Kenojuak, Graphic Masterworks of the Inuit*, by J.Blodgett, Mintmark Press, Toronto; biography and other examples in *N.G.C. Vol.2, G-K*, ed.P.Landry, pg.366; biography in *Biographies of Inuit Artists, Vol.1*, by Canadian Arctic Producers

53 DAYS ON THE COAST #15/50
colour lithograph on paper
17.5 x 24.5 in. / 44 x 62 cm. Dated: 1980
signed, titled, dated, numbered and inscribed 'Dorset'
along bottom; archival mat
Ref: catalogue #159 in *Kenojuak* by J.Blodgett
ESTIMATE: 200/300



– **KINGMEATA ETIDLUI**
[1915-1989] Canadian
see *Biographies of Inuit Artists, Vol.1*, by Canadian Arctic Producers for biography and *Inuit Artist Index*, by Indian and Northern Affairs Canada, pg.50

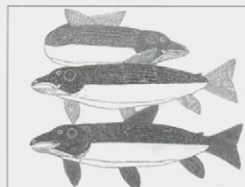
54 BIRD SENTINEL #7/50
colour relief and stencil on paper
15.5 x 22 in. / 39 x 56 cm. Dated: 1981
signed, titled, dated, numbered and inscribed 'Dorset'
along bottom; archival mat
ESTIMATE: 200/300



– **JANET KIGUSIUQ**
[b.1926] Canadian
biography in *Biographies of Inuit Artists, Vol.1*, by Canadian Arctic Producers; included in *Landmarks of Canadian Art*, by P.Mellon, pg.79, McClelland and Stewart, 1978

INUIT cont.

- 55** IRKALUK #14/50
colour stencil and relief print on paper
22 x 26 in. / 56 x 66 cm. Dated: 1981
signed, titled, dated and edition number along bottom;
archival mat
ESTIMATE: 200/300



– TIMOTHY KUANANA

[1938-1984] Canadian
listed in *Inuit Artist Index, January 1990* published by Indian and Northern Affairs Canada

- 56** UNTITLED – COUPLE HUNTING #8/25
relief print on paper
23.75 x 31 in. / 60 x 79 cm. Dated: 1964
24.75 x 35.75 in. / 63 x 91 cm. – Paper Size
signed with syllabics in block lower centre; inscribed in
syllabics and edition number lower left; embossed chop
lower left; archival material throughout
ESTIMATE: 200/300



– VICTORIA MAMNGUQSUALUK

[b.1930] Canadian
biography in *Biographies of Inuit Artists, Vol.2*,
by Canadian Arctic Producers; included in
Sculpture of the Inuit, by G.Swinton, pg.221,
McClelland and Stewart, 1982

- 57** DREAMING OF A MUSKOX HUNT #11/30
colour relief and stencil on paper
22 x 27.75 in. / 56 x 70 cm. Dated: 1987
signed, titled, dated and numbered along bottom;
archival mat
ESTIMATE: 200/300



– AGNES NANOGAK

[b.1925] Canadian
see *Inuit Artist Index*, by Indian and Northern
Affairs Canada, pg.124; biography in *Bio-
graphies of Inuit Artists, Vol.2*, by Canadian
Arctic Producers; illustrated by the artist, *Tales
from the Igloos* by M.Metayer, St. Martin's
Press, 1972

- 58** BRACE OF CANADA GEESE #43/50
colour stencil and relief print on paper
16.5 x 21.5 in. / 42 x 55 cm. Dated: 1982
signed, titled, dated, numbered and inscribed 'Holman'
along bottom; embossed chops lower right
ESTIMATE: 200/300



– JESSIE OONARK

[1906-1985] Canadian
see *Arts of the Eskimo: Prints*, by E.Roch, pg.24;
Landmarks of Canadian Art, by P.Mellen, pg.76,
McClelland and Stewart, 1978; biography in
Biographies of Inuit Artists, Vol.2, by Canadian
Arctic Producers

- 59** TWO BIRDS GUARD SLEEPING KIVIUK #44/50
colour stencil and relief print on paper
30.25 x 20.75 in. / 77 x 53 cm. Dated: 1981
signed, titled, dated and numbered along bottom;
archival mat
ESTIMATE: 200/300



BROCK IRWIN

20th century Canadian

60
**UNTITLED – PORTRAIT OF TWO SISTERS**

colour pencil on paper
23.75 x 29.75 in. / 60 x 76 cm. Dated: 1981
signed and dated lower right; mounted on particle board
ESTIMATE: 400/600

**GERSHON ISKOWITZ**

[1921-1988] Canadian

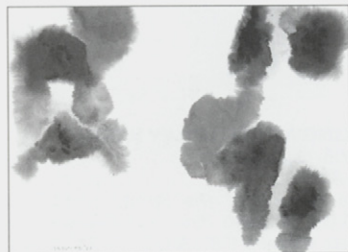
CSGA, RCA

biography and other examples in *N.G.C. Vol.2, G-K*, ed.P.Landry, pg.175; biography and example in *A.G.O.*, by the A.G.O., pg.204; biography in *Dict. of Canadian Artists*, by C.MacDonald, Vol.2, pg.515; included in *Contemporary Canadian Painters*, Canada Council Art Bank, by G.James, n.d.; included in *Landmarks of Canadian Art*, by P.Mellon, pg.240, McClelland and Stewart, 1978; included in *La Collection Tableau Inaugural*, by P.Gagnon, M. d'art Contemporain, 1992; included in www.artcyclopedia.com

61


A L

watercolour on paper
16 x 21 in. / 41 x 53 cm. Dated: 1977
signed, titled and dated lower left
ESTIMATE: 1,000/1,500

**ALEX JANVIER**

[b.1935] Canadian

RCA

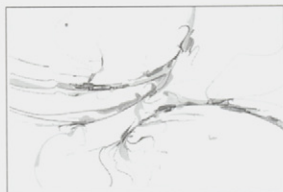
see *The Art of Alex Janvier: His First Thirty Years, 1960-1990*, by L.Martin, Thunder Bay Art Gallery, 1993; as well *Founders of the A.C.A.*, by V.Greenfield, pg.24 and 86; represented by Wallace Galleries, Calgary

62
**FRONTLINE WATER WALKER**

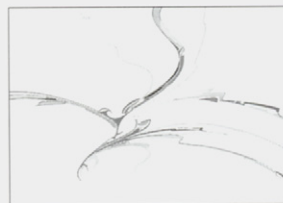
acrylic on canvas
48 x 36 in. / 122 x 91 cm. Dated: 1990 ca.
signed lower right; titled verso
ESTIMATE: 2,000/2,500

**63****UNTITLED – END OF LINE FOR HOCKEY**

gouache on paper board
20 x 29.75 in. / 51 x 76 cm.
signed lower right; archival mat
ESTIMATE: 700/900

**64****HAND GAMES**

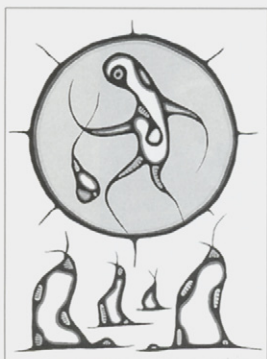
gouache on paper
17.25 x 23.5 in. / 44 x 60 cm. Dated: 1980
signed upper left; archival mat
Prov: Gallery Moos, Toronto/Calgary and Wallack Galleries, Ottawa labels verso
ESTIMATE: 700/900



GOYCE KAKEGAMIC

[b.1948] Canadian
see *The Permanent Collection – Thunder Bay Art Gallery*, by C.Podedworny, pg.27, Thunder Bay Art Gallery, 1986 for biography and other examples

- 56** BOY IN THE MOON #8/46
colour silkscreen on paper
25.75 x 18.5 in. / 65 x 47 cm. Dated: 1979
signed, titled, dated and numbered along bottom;
archival mat
ESTIMATE: 200/300

**JOSHIM KAKEGAMIC**

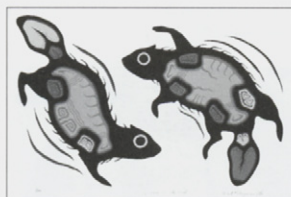
[1952-1993] Canadian
see *The Permanent Collection – Thunder Bay Art Gallery*, by C.Podedworny, pg.30, Thunder Bay Art Gallery, 1986 for biography and another example

- 6** LOON'S FLIGHT #70/70
colour silkscreen on paper
18.25 x 19.25 in. / 46 x 49 cm. Dated: 1976
signed, titled, dated and numbered along bottom;
archival mat
ESTIMATE: 200/300

**ROBERT KAKEGAMIC**

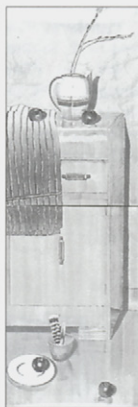
[b.1944] Canadian
see *The Permanent Collection – Thunder Bay Art Gallery*, by C.Podedworny, pg.30, Thunder Bay Art Gallery, 1986 for biography

- 67** BEAVERS IN THE POND #7/39
colour silkscreen on paper
17.25 x 26 in. / 44 x 66 cm. Dated: 1979
signed, titled, dated and numbered along bottom
ESTIMATE: 200/300

**BRIAN KELLEY**

[b.1946] Canadian
biography and another example in *Open Studio: Ten Years*, by R.Sinclair, pg.65, AGO 1980

- 68** STILL LIFE DIPTYCH #5/15
colour lithograph on paper
29.5 x 21.25 in. / 75 x 54 cm.
signed, titled and numbered along bottom;
two pieces framed together, 59 inches high
ESTIMATE: 300/400

**ILLINGWORTH HOLEY KERR**

[1905-1988] Canadian
ASA, RCA
see *Harvest of the Spirit*, by M.Callahan, E.A.G., 1985 and *Paint and Circumstance*, by I.Kerr, Calgary, 1987; *N.G.C. Vol.2 G-K*, ed.C.Hill, pg.368; *Founders of the A.C.A.*, by V.Greenfield, pg.87; *Dict. of Canadian Artists – Vol.3*, by C.MacDonald, pg.633; biography in *Biographical Dict. of Saskatchewan Artists – Men*, by M.Newman, pg.137, Fifth House Pub., 1994

69

EVENING LIGHT, SPRING, TENTH STREET BRIDGE
oil on canvas
22 x 27.75 in. / 56 x 70 cm. Dated: 1985
signed with monogram lower left; signed,
titled and dated verso
ESTIMATE: 2,000/2,500



BRIAN MARK KIPPING

[b.1953] Canadian
included in www.artcyclopedia.com; represented by Bau-Xi Gallery, Vancouver/Toronto

70

TRAINYARDS AT NIGHT
oil on plywood
11.5 x 15.5 in. / 29 x 39 cm. Dated: 1980
signed, titled and dated verso; stain on frame noted
ESTIMATE: 300/500



HAROLD KLUNDER

[b.1943] Canadian
RCA
biography and other examples in *N.G.C. Vol.2, G-K*, ed.P.Landry, pg.379; biography and another example in *Open Studio: Ten Years*, by R.Sinclair, pg.65, AGO 1980; exhibition list in *R.C.A.A.*, by E.McMann, pg.224; included in *Contemporary Canadian Art*, by D.Burnett / M.Schiff, pg. 270, Hurtig Pub., 1983

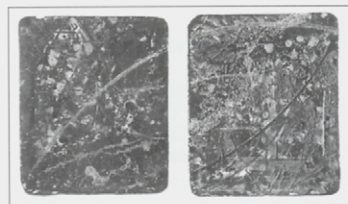
71

STUDY: SCHOENBERG 5(B)
mixed media on paper
31.75 x 22.75 in. / 81 x 58 cm. Dated: 1980
signed and dated lower centre;
bears title on gallery label verso
Ref: *Harold Klunder*, Art Gallery of Hamilton [1988?],
exhibition label verso
Prov: Sable-Castelli Gallery, label verso
ESTIMATE: 1,200/1,500



72

PERRY'S CORNER'S #7/20
colour lithograph on paper
12 x 21 in. / 30 x 53 cm. Dated: 1981
signed, titled, dated and numbered along bottom;
two lithographs [each image 10 inches wide]
on one sheet
ESTIMATE: 200/300



DOROTHY KNOWLES

[b.1927] Canadian
see *Dorothy Knowles Paintings 1964-1982*, by T.Fenton, E.A.G. and biography in *Biographical Dict. of Saskatchewan Artists - Women*, by M.Newman, pg.100, Fifth House Publishing; included in *Selected View: The Longstaffe Collection 1959-1984*, by L.Farrell-Ward, V.A.G., pg.75; biography and another example in *1975-76 The Canadian Canvas*, by Time Canada Ltd., 1975; included in www.artcyclopedia.com; represented by ArtPlacement, Saskatoon

KNOWLES cont

7
3


HEADING NORTH

oil on canvas
24 x 29 in. / 61 x 74 cm. Dated: 1984
signed, titled and dated verso
ESTIMATE: 2,000/2,500

7
4

UNTITLED - DAY'S END

watercolour on paper
22 x 29.75 in. / 56 x 76 cm. Dated: 1976
signed and dated lower right; archival mat
Prov: Waddington Galleries, label verso
ESTIMATE: 900/1,200



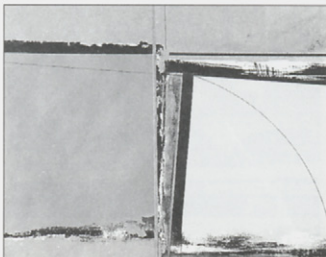
NIELS CHRISTIAN KNUDSEN

[b.1945] Canadian
biography and another example in *Selected Prints: Aspects of Canadian Printmaking*, by J.Noakes, Mira Godard Gallery, Toronto, 1979; biography in *Contemporary '88 Calgary*, Olympic Arts Festival; included in *Contemporary Canadian Art*, by D.Burnett/ M.Schiff, pg.251, Hurtig Pub., 1983; included in *La Collection Tableau Inaugural*, by P.Gagnon, M. d'art Contemporain, 1992; represented by Paul Kuhn Fine Arts, Calgary

7
5

UNTITLED [SILVER AND YELLOW ABSTRACT] #2/60

colour silkscreen on paper
14.5 x 17.25 in. / 37 x 44 cm.
signed, stamped and numbered along bottom;
archival mat
ESTIMATE: 200/300



WILLIAM [BILL] JOHN HOUSTON LAING

[b.1944] Canadian
see *William Laing, A Journey*, by A.Davis, Nickle Arts Museum, Calgary, 1997, exhibition held at the Nickle February through April, 1997; *Artists of Alberta*, by S.Baker, pg.54, U. of A. Press, 1980

7
6

VIEW FROM A TEA ROOM #1 #A.P.

etching and relief print on paper
9.5 x 10.25 in. / 24 x 26 cm.
signed, titled and numbered along bottom; archival mat
ESTIMATE: 250/350

7
7

BETWEEN SEASONS #A.P.

colour etching on paper
4.25 x 23.5 in. / 11 x 60 cm. Dated: 1981
signed, titled, dated and numbered along bottom;
archival mat
ESTIMATE: 250/350



BRENT R. LAYCOCK

[b.1947] Canadian
 ASA, CSPWC
 included in *The Alberta Society of Artists – Sixty Years*, by M.Joslin, E.A.G.; see *Shell Canada Collection*, by B.Shammas, pg.30, Shell Canada, Calgary, 1977; represented by Wallace Galleries, Calgary

- 7** SPRING THAW
 watercolour on paper
 17.5 x 25.25 in. / 44 x 64 cm. Dated: 1980
 signed and dated lower right; titled on artist's label verso;
 archival mat
 ESTIMATE: 400/600



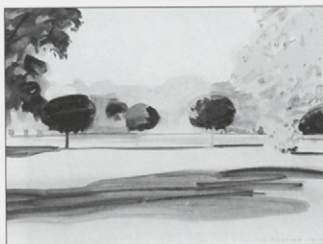
- 7** CARMANGAY, 1980
 pastel on paper
 23 x 32.75 in. / 58 x 83 cm. Dated: 1980
 signed and dated lower right; titled on artist's label verso;
 archival mat
 ESTIMATE: 400/600

**KENNETH CAMPBELL LOCHHEAD**

[b.1926] Canadian
 ASA, RCA
 see *Dict. of Canadian Artists – Vol.4*, by C.MacDonald, pg.876, and exhibition list *M.M.F.A.*, by E.McMann, pg.228; biography in *Biographical Dict. of Saskatchewan Artists – Men*, by M.Newman, pg.153, Fifth House Pub., 1994; *The Flat Side of the Landscape*, by J.O'Brian, Mendel Art Gallery, 1989

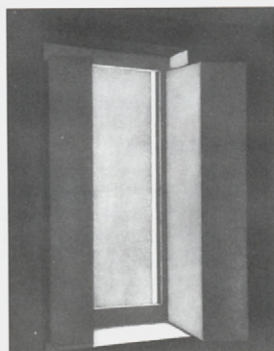
8
0

- #21 REGULAR POSITION
 watercolour on paper
 19.25 x 25 in. / 49 x 64 cm. Dated: 1979
 signed, dated and inscribed '#12' lower right;
 archival mat
 Prov: Marlborough-Godard Toronto/Montreal label verso
 ESTIMATE: 900/1,200

**MEDRIE MACPHEE**

[b.1953] Canadian
 instructor at Cooper's Union School of Art

- 8**
1 SOPHICA'S WINDOW #10/35
 colour etching on paper
 23.5 x 17.5 in. / 60 x 44 cm.
 signed, titled and numbered along bottom; archival mat
 ESTIMATE: 300/500

**HENRI LEOPOLD MASSON**

[1907-1996] Canadian
 CGP, CSPWC, FCA, OSA
 see *Henri Masson, La Vision d'un Peintre*, by C.Bouchard, Les Editions Lecha, 1979; *Henri Masson*, by M.Gingras, Collection Signatures, 1981; *Dict. of Canadian Artists – Vol.4*, by C.MacDonald, pg.1141 for biography; *R.C.A.A.*, by E.McMann, pg.275 and *M.M.F.A.*, by E.McMann, pg.257 for exhibition list

MASSON cont.**82**


THE HUNTER
oil on particle board
10 x 12 in. / 25 x 30 cm.
signed lower right
ESTIMATE: 1,500/2,000

**MICHAEL MATTHEWS**

[b.1954] Canadian
biography in *Contemporary '88 Calgary*,
Olympic Arts Festival; represented by Virginia
Christopher, Calgary

83

FLAT PANORAMA, THE PRAIRIE
acrylic on canvas
18 x 53 in. / 46 x 135 cm. Dated: 1982
signed lower right; titled and dated verso
ESTIMATE: 1,000/1,200

**WILLIAM C. MCCARGAR**

[1906-1980] Canadian
see *Grassroots Saskatchewan*, by D.Thauberger,
Norman MacKenzie Art Gallery, 1976; *Saskatchewan Arts Board Collection*, N.Dillow,
pg.60, Norman MacKenzie Art Gallery, 1978;
biography in *Biographical Dict. of Saskatchewan Artists - Men*, by M.Newman, pg.161,
Fifth House Pub., 1994

84

UNTITLED - PRAIRIE HARVEST
mixed media on paper
13.5 x 15.25 in. / 34 x 39 cm.
signed lower right; archival mat
ESTIMATE: 250/350

**58**

CHURCH IN VALLEY
mixed media on paper
11 x 21.25 in. / 28 x 54 cm.
signed lower right
ESTIMATE: 250/350

**DORIS JEAN MCCARTHY**

[b.1910] Canadian
CSPWC, OSA, RCA
see *Doris McCarthy Feast of Incarnation Paintings 1929-1989*, by W.Moore, the Gallery / Stratford, 1991; *Celebrating Life, the Art of Doris McCarthy*, by W.Moore, McMichael Collection, 1999; biography and other examples in *A.G.O.*, by the A.G.O., pg.264; exhibition list in *R.C.A.A.*, pg. 249 and *M.M.F.A.*, pg.234 by E.McMann; *A Fool in Paradise*, 1990 and *The Good Wine*, by D.McCarthy, MacFarlane, Walter and Ross, 1991 for autobiography

86


UNTITLED - BOATS ON THE BEACH
oil on canvas
24 x 27 in. / 61 x 69 cm.
signed lower left
ESTIMATE: 3,000/4,000

**ROBERT F.M. MCINNIS**

[b.1942] Canadian
see *Spaces and Places - Eight Decades of Landscape Painting in Alberta*, by J.Ironside, pg.106 as well as *Dict. of Canadian Artists - Vol.4*, by C.MacDonald, addendum for biography; represented by Masters Gallery, Calgary and Roberts Gallery, Toronto

87

**ROAD NORTH FROM LANGDON**

oil on canvas

30 x 36 in. / 76 x 91 cm. Dated: 1979
signed and dated lower centre; indistinctly inscribed
lower left; signed, titled and dated on paper verso;
small paint chip missing upper centre
ESTIMATE: 700/900



88

DOG CLOUDS AND SUN, SYLVAN LAKE

oil on canvas

16 x 20 in. / 41 x 51 cm. Dated: 1980
signed and dated lower; signed, titled and dated verso
Prov: Masters Gallery, Calgary, label verso
ESTIMATE: 500/700

**DON MCVEIGH**

[b.1951] Canadian

exhibitions include the Southern Alberta Art
Gallery, Lethbridge and the Glenbow Museum;
listed in *Artists in Canada – Union List*, N.G.C.,
1988

89

UNTITLED – GREEK VASE

watercolour on paper

22.5 x 30 in. / 57 x 76 cm. Dated: 1981
signed and dated left centre; archival mat
Prov: *Don McVeigh*, Glenbow Museum, Calgary, 1982,
exhibition label verso
ESTIMATE: 500/700

**ANNE MEGGIT**

[b.1930] Canadian

biography in *Biographical Dict. of Sask-
atchewan Artists – Women*, by M.Newman,
pg.156, Fifth House Publishing; represented by
Assiniboia Gallery, Regina

90

**PHEASANT CREEK**

oil on canvas

37.5 x 48 in. / 95 x 122 cm. Dated: 1984
signed lower left
ESTIMATE: 900/1,200

**JOHN MEREDITH**

[1933-2000] Canadian

RCA

see *Toronto Painting 1953-65*, by D.Reid, N.G.C.
1972; *John Meredith: Drawings 1957-80*, by
I.Thom, A.G.G.V. 1980; *John Meredith: Fifteen
Years*, by M.Fleming, A.G.O. 1974; *A.G.O.*, by
the A.G.O., pg.303; *Dict. of Canadian Artists –
Vol.4*, by C.MacDonald, pg.1189; included in
Landmarks of Canadian Art, by P.Mellon,
pg.222, McClelland and Stewart, 1978; includ-
ed in *Contemporary Canadian Art*, by
D.Burnett/M.Schiff, pg.89, Hurtig Pub., 1983;
included in *Visions: Contemporary Art in
Canada*, ed.R.Bringhurst et al, pg.116, Douglas
and McIntyre, 1983; included in
www.artcyclopedia.com

91

**UNTITLED**

mixed media and collage on paper

13.75 x 16.75 in. / 35 x 43 cm. Dated: 1980
signed and dated lower left
ESTIMATE: 700/900



BARBARA MILNE

[b.1956] Canadian
biography and another example in *Contemporary '88 Calgary*, by M.Lavolette, pg.64, Olympic Arts Festival; represented by Atelier Gallery, Vancouver and Paul Kuhn Fine Arts, Calgary

92

SHORELINE

oil on canvas
16 x 21.75 in. / 41 x 55 cm. Dated: 1984
bears name, title and dated on paper attached verso
ESTIMATE: 900/1,200



93

GREEN SEA

acrylic on canvas
24 x 24 in. / 61 x 61 cm. Dated: 1984
signed, titled and dated verso
Prov: Paul Kuhn Fine Arts, Calgary, stamp verso
ESTIMATE: 900/1,200

**JANET MITCHELL**

[1912-1998] Canadian
ASA, CSPWC, RCA
see *Janet Mitchell, Life and Art*, by P.Armstrong, Hyperion Press, 1990 and *Janet Mitchell, a Retrospective Exhibition*, by A.Oko, Glenbow-Alberta Institute, 1977; *N.G.C. Vol.III*, by R.Hubbard, pg.219, for biography and painting in the N.G.C.; *Dict. of Canadian Artists - Vol.4*, by C.MacDonald, pg.1240 for biography; included in *Jubilee Exhibition of Alberta Paintings*, by J.Nicoll, pg.23, Calgary Allied Art Centre, 1955

94

GOING TO THE BAKERY

watercolour on paper
20.75 x 28.5 in. / 53 x 72 cm. Dated: 1980
signed and dated lower right
Prov: Masters Gallery, Calgary, label verso
ESTIMATE: 1,500/2,000

**GUIDO MOLINARI**

[b.1933] Canadian
RCA
biography and another example in *A.G.O.*, by the A.G.O., pg.312; exhibition list in *R.C.A.A.*, by E.McMann, pg.289 and *M.M.F.A.*, by E.McMann, pg.269; included in *La Collection Tableau Inaugural*, by P.Gagnon, M. d'art Contemporain, 1992; included in www.artcyclopedie.com

95

UNTITLED - CALLIGRAPHY #5/20

silkscreen on paper
33 x 25.5 in. / 84 x 65 cm. Dated: 1958 / 80
signed, dated and numbered along bottom
ESTIMATE: 900/1,200

**DAVID JOHN MORE**

[b.1947] Canadian
biography and another example in *Measure of Success: Graduates of the A.C.A. 1963-1984*, by L.Greenwood, pg 98; *Spaces and Places, Eight Decades of Landscape Painting in Alberta*, by J.Ironside, pg.60; represented by Paul Kuhn Fine Arts, Calgary

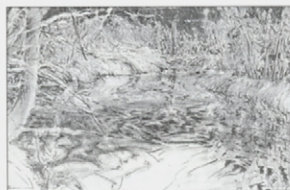
9
6


THE HERB GARDEN – AUGUST HEAT
oil on particle board
24 x 24 in. / 61 x 61 cm. Dated: 1983
signed lower centre; signed, titled,
dated and inscribed verso
ESTIMATE: 800/1,200



9
7

CALM POOL REVISITED – EVENING
pastel on paper
23.75 x 35.5 in. / 60 x 90 cm. Dated: 1981
signed, titled and dated along bottom
ESTIMATE: 400/600



MADELEINE MORIN
[b.1938] Canadian

8
9
UNTITLED – L'AVIATEUR
pastel and graphite on paper
18.75 x 23.75 in. / 48 x 60 cm. Dated: 1977
signed and dated lower right; archival mat
ESTIMATE: 300/500



NORVAL MORRISSEAU

[b.1931] Canadian
RCA
see *Norval Morriseau*, by N.Morriseau,
Musee de Quebec, 1966; *The Art of Norval
Morriseau*, by N.Morriseau, Methuen Pub.,
1979

9
9


UNTITLED – DEMIGOD OF MEDICINE
gouache on paper
30 x 22 in. / 76 x 56 cm. Dated: 1965 ca.
signed in syllabics lower centre; bears note verso
'This is an Indian dressed in full regalia, an idea that
represents no tribe, but my idea of a human form,
Demigod of Medicine'
ESTIMATE: 2,000/3,000



JOE NORRIS

[1924-1996] Canadian
current exhibition of his work *Joe Norris:
Painted Visions of Nova Scotia* curated by the
Art Gallery of Nova Scotia until January 28,
2001; included in *Folk Art of Nova Scotia*, by
M.Ellwood, 1976; *From the Heart – Folk Art in
Canada*, by J.Blanchette et al, pg.66, National
Museum of Man, 1983

1
0
0


THE COVE
enamel on plywood
14 x 18 in. / 36 x 46 cm. Dated: 1981
signed 'Joe Norris' and dated lower left;
signed and titled verso; in frame painted by the artist,
measuring 22.5 x 26.5 inches
Prov: Zwicker's Gallery, Halifax, label verso
ESTIMATE: 900/1,200



NORRIS cont.

- 101** MOOSE WITH WOODPECKERS
oil on plywood
20.5 x 30.25 in. / 52 x 77 cm.
signed lower right
Prov: Zwicker's Gallery, Halifax, label verso
ESTIMATE: 900/1,200



- 102** MOOSE AND SUNSET
oil on canvas
16 x 20 in. / 41 x 51 cm.
signed lower right
Prov: Zwicker's Gallery, Halifax, label verso
ESTIMATE: 900/1,200



- 103** BIRDS ON ROCKS
oil on canvas
20 x 23.75 in. / 51 x 60 cm.
signed lower right
Prov: Zwicker's Gallery, Halifax, label verso
ESTIMATE: 900/1,200



NORTH WEST COAST

– ROBERT CHARLES DAVIDSON

[b.1946] Canadian

RCA

see *Printmaking in B.C. 1883-1983*, by N.Tueh, A.G.G.V. for another example of this artist's work; see www.douglasreynoldsgallery.com and www.artcyclopedia.com; included in *Contemporary Canadian Art*, by D.Burnett/M.Schiff, pg. 275, Hurtig Pub., 1983; included in *Visions: Contemporary Art in Canada*, ed.R.Bringhurst et al, pg.155, Douglas and McIntyre, 1983

- 104** UNTITLED – T-SILLI-AA-LIS, RAVENA, #27/99
colour silkscreen on paper
28 x 39.25 in. / 71 x 100 cm. Dated: 1983
signed, dated and numbered along bottom; archival mat
ESTIMATE: 700/900



- 105** UNTITLED – EVERY YEAR THE SALMON
COME BACK #27/99
colour silkscreen on paper
29.5 x 41.5 in. / 75 x 105 cm. Dated: 1983
signed, dated and numbered along bottom; archival mat
ESTIMATE: 700/900



– WALTER HARRIS

[b.1931] Canadian

- 106** CHILDREN PULLING THE JAW OFF THE TRANSFORMED WEGET #39/100
 colour silkscreen on paper
 13.75 x 9.5 in. / 35 x 24 cm. Dated: 1981
 signed, titled, dated and numbered along bottom;
 archival mat
 ESTIMATE: 200/300



– KEN MOWATT

[b.1944] Canadian

- 107** MILLUXW #40/50
 colour silkscreen on paper
 15.5 x 12.75 in. / 39 x 32 cm. Dated: 1950
 signed, titled, dated [?] and numbered along bottom;
 archival mat
 ESTIMATE: 200/300



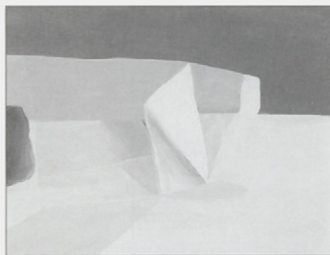
- 108** FROG RAVEN #40/100
 colour silkscreen on paper
 12 x 8.5 in. / 30 x 22 cm. Dated: 1980
 signed, titled, dated and numbered along bottom;
 archival mat
 ESTIMATE: 200/300



TONI ONLEY

[b.1928] Canadian
 BCSA, CSPWC, ARCA
 see *Toni Onley: A Retrospective Exhibition*, by T.Lindberg, 1978, V.A.G.; *Toni Onley: A Silent Thunder*, by R.Boulet, Prentice Hall, 1981; *Onley's Arctic*, by T.Onley, Douglas and McIntyre, 1989; *Dict. of Canadian Artists - Vol.5*, by C.MacDonald, pg.1435 for biography; biography and another example in *1975-76 The Canadian Canvas*, by Time Canada Ltd., 1975; exhibition list in *R.C.A.A.*, pg.311 and *M.M.F.A.*, by E.McMann, pg.290

- 109** SPIRIT LAND
 oil on plywood
 20 x 25.75 in. / 51 x 65 cm. Dated: 1969
 signed lower left; signed, titled and dated verso
 Prov: Galerie Agnes Lefort, Montreal, label verso
 ESTIMATE: 1,500/2,000



ONLEY cont.

- 110** EAST POINT, SATURNA ISLAND, B.C.
watercolour on paper
10.75 x 14.5 in. / 27 x 37 cm. Dated: 1977
signed, titled and dated along bottom; archival mat
ESTIMATE: 800/1,000



- 111** MOUNT GARIBALDI
watercolour on paper
10.5 x 14.25 in. / 27 x 36 cm. Dated: 1975
signed, titled and dated along bottom; archival mat
ESTIMATE: 800/1,000



BRUCE PASHAK

[b.1951] Canadian
represented by Lejniaks Fine Art, San Francisco

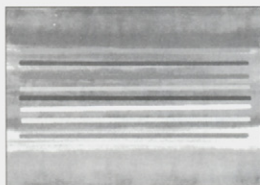
- 112** UNTITLED - WOMAN IN YELLOW SHIRT
mixed media on paper
30.5 x 19.25 in. / 77 x 49 cm. Dated: 1984
signed and dated upper right
ESTIMATE: 300/500



WILLIAM PEREHUDOFF

[b.1919] Canadian
RCA
see *William Perekudoff*, by R.Christie, Glenbow-Alberta Institute, 1977; *William Perekudoff*, by N.Tousley, Mendel Art Gallery, 1993; *Saskatchewan Art and Artists*, by N.Dillow, pg.41, Norman Mackenzie Gallery, 1971; *Dict. of Canadian Artists - Vol.5*, by C.MacDonald, pg.1596; *Biographical Dict. of Saskatchewan Artists - Men*, by M.Newman, pg.194, Fifth House Pub., 1994

- 113** LA PLONGE #9 #18/75
colour silkscreen on paper
21 x 29.75 in. / 53 x 76 cm. Dated: 1979
signed, titled and numbered along bottom; archival mat
Prov: Waddington Galleries, label verso;
according to note verso 'from a portfolio of 5 prints'
ESTIMATE: 300/400



JOSEPH PLASKETT

[b.1918] Canadian
BCSA, CGP, RCA
see *Joe Plaskett and His Paris, In Search of Time Past*, by Fine Arts Gallery, University of B.C., 1971; *Joseph Plaskett, Reflections and Shadows*, by R.Boulet, Art Gallery of South Okanagan, 1996; *N.G.C. Vol.III*, by R.Hubbard, pg.251 and *A.G.O.*, by the A.G.O., pg.380 for other examples; biography in *Dict. of Canadian Artists*, by C.MacDonald, Vol.6, pg.1732; represented by Paul Kuhn Fine Arts, Calgary

- 114** UNTITLED [FOOTHILLS WITH RIVER VALLEY]
pastel on paper
17 x 23 in. / 43 x 58 cm. Dated: 1968
signed and dated lower left
ESTIMATE: 500/700



- 115** UNTITLED [FOOTHILLS ROAD WITH MOUNTAINS]
 pastel on paper
 17 x 23 in. / 43 x 58 cm. Dated: 1968
 signed and dated lower right
 ESTIMATE: 500/700



LESLIE DONALD POOLE

[b.1942] Canadian
 see *Through the Looking Glass, Self-Portraits of Leslie Poole*, by R.Laurence, Kamloops Art Gallery, 1992 for biography and other examples; biography in *Dict. of Canadian Artists*, by C.MacDonald, Vol.6, pg.1771; represented by Virginia Christopher Gallery, Calgary

- 116** CACTUS ...
 acrylic on paperboard
 31 x 31.25 in. / 79 x 79 cm. Dated: 1980
 signed and dated lower right
 Prov: Susan Whitney Gallery, Regina, label verso
 ESTIMATE: 1,200/1,500



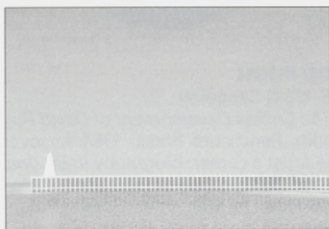
- 117** HYDRANGEA FLIGHT
 acrylic on canvas
 24 x 24 in. / 61 x 61 cm. Dated: 1980
 signed lower right; signed, titled and dated verso
 ESTIMATE: 1,000/1,200



JOHN CHRISTOPHER PRATT

[b.1935] Canadian
 RCA
 see *Christopher Pratt*, by D.Silcox, Prentice Hall, 1982; *The Prints of Christopher Pratt 1958-1991, Catalogue Raisonne*, by J.Scott, Breakwater Press and Mira Godard Gallery, 1991; biography in *Dict. of Canadian Artists*, by C.MacDonald, Vol.6, pg.1813; represented by Paul Kuhn Fine Arts, Calgary and Mira Godard, Toronto

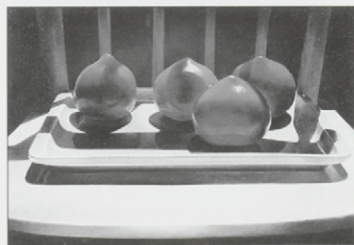
- 118** BREAKWATER #12/55
 colour silkscreen on paper
 19.75 x 27.75 in. / 50 x 70 cm. Dated: 1976
 signed, titled, dated and numbered along bottom;
 archival mat
 Ref: illustrated in *Christopher Pratt*, by D.Silcox, pg.139
 ESTIMATE: 1,500/2,000



MARY FRANCES WEST PRATT

[b.1935] Canadian
 RCA
 biography in *Dict. of Can. Artists*, by C.MacDonald, Vol.6, pg.1819; *Enjoying Canadian Painting*, by P.Godsell, pg.236; *By a Lady, Celebrating Three Centuries of Art by Canadian Women*, by M.Tippett, pg.154; biography in *Dict. of Canadian Artists*, by C.MacDonald, Vol.6, pg.1818; represented by Mira Godard, Toronto

- 119** UNTITLED - PLUM TOMATOES
 oil on particle board
 14.75 x 20 in. / 37 x 51 cm. Dated: 1982
 signed and dated lower right
 ESTIMATE: 4,000/6,000



PRATT cont.

- 1**
2
0
- TIED BOAT #8/60
colour lithograph on paper
13.75 x 13.75 in. / 35 x 35 cm. Dated: 1980
signed, titled, dated and numbered along bottom;
circle format; embossed chop lower right
ESTIMATE: 600/800



DAVID PUGH

[1946-1994] Canadian
see *The Critical Development of David Pugh*, by D.Godin, Penumbra Press, 1984 for overview of the artist's career; biography in *Biographical Dict. of Saskatchewan Artists - Men*, by M.Newman, pg.209, Fifth House Pub., 1994; represented by Masters Gallery, Calgary

- 1**
2
1
- WINCHELL SWAMP #2
acrylic on canvas
36 x 48 in. / 91 x 122 cm. Dated: 1981
signed and dated lower right
Prov: Mira Godard Toronto/Calgary label verso
ESTIMATE: 1,000/1,500



WILLIAM [BILL] BRENT RITCHIE

[b.1954] Canadian
biography in *Dict. of Canadian Artists*, by C.MacDonald, Vol.7, pg.2138; biography included on the Art Gallery of Newfoundland and Labrador web site; included in www.artcyclopedia.com

- 1**
2
2
- BLUEBERRY #1/10
lithograph on paper
28 x 35 in. / 71 x 89 cm. Dated: 1981
signed, titled, dated and numbered along bottom;
archival mat
ESTIMATE: 300/400



WILLIAM GRIFFITH ROBERTS

[b.1921] Canadian
RCA
biography in *Dict. of Canadian Artists*, by C.MacDonald, Vol.7, pg.2181; exhibition list in *R.C.A.A.*, pg.350 and *M.M.F.A.*, by E.McMann, pg.325; represented by Wallace Galleries, Calgary and Thielsen Galleries, London

- 1**
2
3
- SUMMER REFLECTION
acrylic on canvas
56 x 60 in. / 142 x 152 cm. Dated: 1984
lower centre
Prov: Nancy Poole Studio, Toronto, label verso
ESTIMATE: 3,000/4,000



CLIFFORD FOARD ROBINSON

[1917-1992] Canadian
ASA, CSGA, FCA
see *Printmaking in Alberta 1945-1985*, by B.Cochran, pg.119; *Images of the Land, 1919-1945*, by P.Ainslie, pg.93; *The Society of Canadian Painter-Etchers and Engravers in Retrospect*, by A.Oko, pg.76, Art Gallery of Hamilton, 1981; included in *Jubilee Exhibition of Alberta Paintings*, by J.Nicoll, pg.27, Calgary Allied Art Centre, 1955; see *Printmaking in B.C. 1883-1983*, by N.Tuele, A.G.G.V. for another example of this artist's work; a relative informed us that the artist's middle name is 'Foard' not 'Feard', as previously catalogued

- 1**
2
4 MAN MAKING HAY, VERMILLION, ALTA.
watercolour on paper
9.5 x 13.25 in. / 24 x 34 cm. Dated: 1942
signed with initials lower left;
signed, titled and dated on paper verso; archival mat
ESTIMATE: 300/400



ADELINE ROCKETT

[b.1929] Canadian
see *Shell Canada Collection*, by B.Shammas, pg.46, Shell Canada, Calgary, 1977; biography in *Dict. of Canadian Artists - Vol.7*, by C.MacDonald, pg.2230; *Biographical Dictionary of Saskatchewan Artists, Women Artists*, by M.Newman, pg.211, Fifth House Pub., 1990

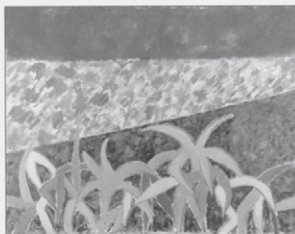
- 1**
2
5 UNTITLED - BATTLE RIVER SERIES #23
watercolour on paper
21.25 x 28.75 in. / 54 x 73 cm. Dated: 1978
signed and dated lower left; archival mat
ESTIMATE: 300/500



LUPE RODRIGUEZ

[b.1953] Canadian
biography in *Dict. of Canadian Artists*, by C.MacDonald, Vol.7, pg.2240; represented by Drabinsky Gallery, Toronto and Virginia Christopher, Calgary

- 1**
2
6 VISTA DE ORO
acrylic on canvas
48 x 60 in. / 122 x 152 cm. Dated: 1981
signed and dated verso
ESTIMATE: 1,500/2,000



- 1**
2
7 UNTITLED - ANDROS
mixed media on paper
23.25 x 32.25 in. / 59 x 82 cm. Dated: 1982
signed and dated lower right; archival mat
ESTIMATE: 700/900



OTTO DONALD ROGERS

[b.1935] Canadian
ARCA
see *New Paintings by Otto Rogers*, R.Shuebrook, Glenbow Museum, 1973; *Otto Rogers*, by K.Bell, Norman MacKenzie Art Gallery, 1977; and *Otto Rogers: New Paintings and Sculpture 1977-78*, by the Mendel Art Gallery, 1978; ; biography in *Biographical Dict. of Saskatchewan Artists, Men Artists*, by M.Newman, pg.214, Fifth House Pub., 1994; *Dict. of Canadian Artists - Vol.7*, by C.MacDonald, pg.2251; *M.M.F.A.*, by E.McMann, pg.328 for exhibition list; biography and another example in *1975-76 The Canadian Canvas*, by Time Canada Ltd., 1975; represented by Paul Kuhn Fine Arts, Calgary

ROGERS cont.

1
2
1

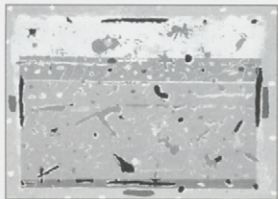
MOVEMENT ABOVE LAND

acrylic on canvas
48 x 48 in. / 122 x 122 cm. Dated: 1974
signed, dated and inscribed '2' verso
Prov: Marlborough Godard, Toronto/Montreal,
label and Espace 5, Montreal stamp verso
ESTIMATE: 2,500/3,500

1
2
1

UNTITLED #23/40

colour silkscreen on paper
21.5 x 28.75 in. / 55 x 73 cm. Dated: 1975
signed, dated and numbered along bottom; archival mat
ESTIMATE: 300/400



BRYAN RYLEY

[b.1952] Canadian
biography in *Dict. of Canadian Artists*, by
C.MacDonald, Vol.7, pg.2401; represented
by Paul Kuhn Fine Arts, Calgary

1
2
1

IX - 85 XIV

mixed media on paper
22 x 14.25 in. / 56 x 36 cm. Dated: 1985
signed with initials, titled and dated lower right;
archival mat
ESTIMATE: 400/500

1
3
1

IX - 85 VI

mixed media on paper
22 x 14 in. / 56 x 36 cm. Dated: 1985
signed with initials, titled and dated lower right;
archival mat
ESTIMATE: 400/500

1
2
1

IX - 85 VII

mixed media on paper
22 x 14 in. / 56 x 36 cm. Dated: 1985
signed with initials, titled and dated lower right;
archival mat
ESTIMATE: 400/500

1
2
1

IX - 85 II

mixed media on paper
21.75 x 14.25 in. / 55 x 36 cm. Dated: 1985
signed with initials, titled and dated lower right;
archival mat
ESTIMATE: 400/500



ALLEN SAPP

[b.1929] Canadian

RCA

see *Cree Life – the Art of Allen Sapp*, by J.Warner, Douglas Ltd., 1977; *Two Spirits Soar – The Art of Allen Sapp, The Inspiration of Allan Honor*, by W.Kinsella, Stoddart Publishing, 1990; *Kiskayetum – Allen Sapp: - Retrospective*, by B.Boyer, MacKenzie Art Gallery, 1994; *Time for Dialogue*, by J.Cardinal-Schubert, pg.19, Calgary Aboriginal Awareness Society, 1992; biography in *Biographical Dict. of Saskatchewan Artists – Men*, by M.Newman, pg.223, Fifth House Pub., 1994

134 HOUSE NEEDS FIXING

acrylic on canvas

18 x 23.75 in. / 46 x 60 cm. Dated: 1980

signed lower right;

bears title and date on artist's label verso

Prov: Downstairs Gallery, Edmonton, label verso

ESTIMATE: 2,500/3,500

**TONY SCHERMAN**

[b.1950] Canadian

another example in *Contemporary Canadian Art*, by D.Burnett and M.Schiff, pg.280, Hurtig Pub., 1983; numerous web site listings in Dallas, Montreal, Toronto and Berlin; represented by Paul Kuhn Fines Arts, Calgary and Heffel Gallery, Toronto

135 RECLINING PARASOL

mixed media on paper

13 x 23.5 in. / 33 x 60 cm. Dated: 1981

signed and dated lower centre; archival mat

Prov: Waddington Galleries, Toronto, label verso

ESTIMATE: 1,500/2,000

**136** EXCHANGING GLANCES #3/10

etching on paper

18.5 x 17.5 in. / 47 x 44 cm. Dated: 1982

signed, titled, dated and numbered along bottom

ESTIMATE: 500/700

**JANICE [JAN] JOY SERR**

[b.1943] Canadian

biography and another example in *Selected Prints: Aspects of Canadian Printmaking*, by J.Noakes, Mira Godard Gallery, Toronto, 1979

137 #19 SKY OVER BLUE HILLS

pastel on paper

22 x 30 in. / 56 x 76 cm. Dated: 1981

signed and dated lower right; archival mat

Prov: Mira Godard, Toronto/Calgary, label verso

ESTIMATE: 400/600


**JACK LEONARD SHADBOLT**

[1909-1998] Canadian

BCSA, CGP, CSGA, CSPWC, RCA

see *In Search of Form*, by J.Shadbolt, McClelland, 1968; *Jack Shadbolt*, by S.Watson, Douglas and McIntyre, 1990; *Correspondences – Jack Shadbolt*, by P.Ainslie, Glenbow Museum, 1991; *Counterpoint: The Prints of Jack Shadbolt*, by K.Henry, Burnaby Art Gallery, 1996; *A.G.O.*, by the A.G.O., pg.417 and *N.G.C. Vol.III*, by R.Hubbard, pg.279

SHADBOLT cont.

1
3
8


UNTITLED – HOMAGE TO MABALCOS
collage on paper
60 x 40 in. / 152 x 102 cm. Dated: 1982
signed and dated lower right
Prov: Bau-Xi Gallery, Vancouver, label verso
ESTIMATE: 9,000/12,000

1
3
9

UNTITLED – ABSTRACTED LANDSCAPE
watercolour and ink on paper
22.5 x 30.25 in. / 57 x 77 cm. Dated: 1958 -70
signed and dated lower left; archival mat
ESTIMATE: 2,500/3,500

1
4
0


UNTITLED (HOUSE AND TREES)
graphite on paper
12.5 x 16.5 in. / 32 x 42 cm. Dated: 1938 -39
signed lower left; dated lower right; archival mat
Prov: Downstairs Gallery, Edmonton, label verso
ESTIMATE: 2,000/3,000

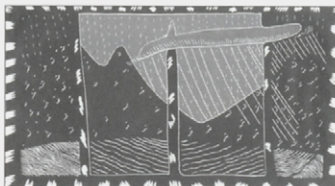


ARNOLD SHIVES

[b.1943] Canadian
biography and another example in *Print-making in British Columbia 1889-1983*, by N.Tuele, A.G.G.V.; *Carmanah – Artistic Visions of an Ancient Rainforest*, ed. A.Hansen, pg.138; *Western Canadian Wilderness Society*, 1989; *Vancouver: Art and Artists 1931-1983*, V.A.G., 1983; represented by Paul Kuhn Fine Arts, Calgary and Atelier Gallery, Vancouver

1
4
1

HARBOUR VIEW #34/39
colour linoblock on paper
22 x 39 in. / 56 x 99 cm. Dated: 1981
signed, titled, dated and numbered along bottom;
archival mat
ESTIMATE: 300/500



PETER SHOSTAK

[b.1943] Canadian
see *When Nights Were Long*, by P.Shostak, Yalenka Books, 1982; *Saturday Came but Once a Week*, by P.Shostak, Yalenka Books, 1984; *For Our Children*, by P.Shostak, Yalenka Books, 1991

1
4
2

THESE WERE HARD BUT HAPPY TIMES #45/100
colour silkscreen on paper
14.5 x 21.75 in. / 37 x 55 cm. Dated: 1981
signed, titled, dated and numbered along bottom;
archival mat
ESTIMATE: 250/350



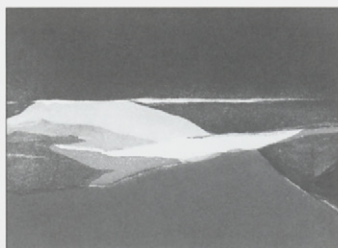
GORDON APPELBY SMITH

[b.1919] Canadian
BCSA, CGP, CPE, RCA
see *Gordon Smith Recent Work* by K.Wallace, V.A.G., 1988; *A.G.O.*, by the A.G.O., pg.423 as well as *N.G.C. Vol.III*, by R.Hubbard, pg. 283 for biography and other examples; biography and another example in *1975-76 The Canadian Canvas*, by Time Canada Ltd., 1975; included in *7 West Coast Painters*, by I.McNairn, Fine Arts Gallery, U.B.C., 1959

- 1** ROCKIES #4
4 graphite on paper
3 7.75 x 11.75 in. / 20 x 30 cm. Dated: 1976
signed and dated lower right
Prov: Marlborough-Godard Toronto/Montreal, label verso
ESTIMATE: 700/900



- 1** TOFIND NIGHT #3/50
4 colour etching on paper
4 17.75 x 23.75 in. / 45 x 60 cm. Dated: 1982
signed, titled, dated and numbered along bottom
ESTIMATE: 200/300

**JOHN HAROLD THOMAS SNOW**

[b.1911] Canadian
ASA, CSGA, RCA
see *John Snow: Four Decades*, by M.Joslin, E.A.G., 1990; *Founders of the A.C.A.*, by V.Greenfield, pg.101 and pg.65; *Printmaking in Alberta 1945-1985*, by B.Cochran, pg.137 and *A.G.O.*, by the A.G.O., pg.425; included in *Jubilee Exhibition of Alberta Paintings*, by J.Nicoll, pg.28, Calgary Allied Art Centre, 1955; recent exhibition held at Collector's Gallery, Calgary for this important artist

1
4
5


- EVORA #21/50
colour lithograph on paper
14 x 18 in. / 36 x 46 cm.
signed, titled and numbered along bottom; archival mat
ESTIMATE: 300/500



1
4
6

- AUTUMN #20/50
colour lithograph on paper
15 x 18.75 in. / 38 x 48 cm.
signed, titled and numbered along bottom
ESTIMATE: 300/500



1
4
7

- BOWL OF YELLOW FLOWERS #15/50
colour lithograph on paper
11.75 x 15.5 in. / 30 x 39 cm.
signed, titled and numbered along bottom; archival mat
ESTIMATE: 300/500



SNOW cont.

- 148** STILL LIFE BLUE FLOWERS #9/50
 colour lithograph on paper
 17 x 23 in. / 43 x 58 cm.
 signed, titled and numbered along bottom; archival mat
 ESTIMATE: 300/500



- 149** NEAR BRAGG CREEK #5/50
 colour lithograph on paper
 11.75 x 15.75 in. / 30 x 40 cm.
 signed, titled and numbered along bottom; archival mat
 Prov. Sundance Gallery, Calgary, stamp verso
 ESTIMATE: 300/500



- 150** SEDA #29/45
 colour lithograph on paper
 13.75 x 15.75 in. / 35 x 40 cm.
 signed, titled and numbered along bottom; archival mat
 ESTIMATE: 300/500



THOMAS ALBERT STONE

[1894-1978] Canadian
 OSA
 biography in *A.G.O.*, by the A.G.O., pg.433;
 exhibition list in *R.C.A.A.*, by E.McMann, pg.390

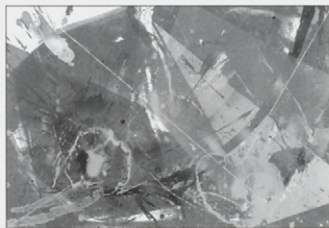
- 151** LOGGING TEAM, HALIBURTON
 oil on particle board
 24 x 36 in. / 61 x 91 cm.
 signed lower right; signed and titled on label verso
 ESTIMATE: 400/600



OTIS TAMASAUSKAS

[b.1947] Canadian
 biography and another example in *Selected Prints: Aspects of Canadian Printmaking*, by J.Noakes, Mira Godard Gallery, Toronto, 1979;
Open Space: Ten Years, R.Sewell, AGO, 1980

- 152** JUMPING TROUT #1/4
 colour lithograph on paper
 23.75 x 33.75 in. / 60 x 86 cm. Dated: 1981
 signed, titled, dated and numbered along bottom;
 archival mat
 ESTIMATE: 300/400



TAKAO TANABE

[b.1926] Canadian
 ARCA
 see *Takao Tanabe 1972-1976 The Land* by J.Rule, MacKenzie Art Gallery, 1976; *Takao Tanabe New Prints*, I.Thom, Periwinkle Press, 1994; *N.G.C. Vol.III*, by R.Hubbard, pg.289; *A.G.O.*, by the A.G.O., pg.438; *R.C.A.A.*, by E.McMann, pg.396; *Artists of Alberta*, by S.Baker, pg.82, U. of A. Press, 1980; included in *7 West Coast Painters*, by I.McNairn, Fine Arts Gallery, U.B.C., 1959; included in www.artcyclopedia.com

153



THE LAND

acrylic on canvas

26 x 32 in. / 66 x 81 cm. Dated: 1977

signed, titled and dated verso

Prov: Downstairs Gallery, Edmonton, label verso

ESTIMATE: 1,200/1,500



154

PRAIRIE HILL WITH CLOUD #20/75

lithograph on paper

14 x 26 in. / 36 x 66 cm. Dated: 1980

signed, titled, dated and numbered along bottom;

archival mat

ESTIMATE: 300/400



ARMAND TATOSSIAN

[b.1948] Canadian

RCA

listed in *Guide Vallee, III Edition*, by F.Vallee, pg.1059, pub. Le Guide Vallee, 1992

155

LA FORET

oil on canvas

30 x 24 in. / 76 x 61 cm.

signed lower right; signed and titled verso

Prov: Marcel Art Frames, Montreal, label verso

ESTIMATE: 700/900



DAVID THAUBERGER

[b.1948] Canadian

see *David Thauberger Paintings 1978-1988*, by P.White, Mackenzie Art Gallery, 1988; included in *Contemporary Canadian Art*, by D.Burnett/M.Schiff, pg.283, Hurtig Pub., 1983; included in *Visions: Contemporary Art in Canada*, ed.R.Bringhurst et al, pg.58, Douglas and McIntyre, 1983

156



RAINBOW BRIDGE

acrylic on canvas

45 x 68 in. / 114 x 173 cm. Dated: 1981

signed, titled and dated verso

ESTIMATE: 3,000/5,000



157

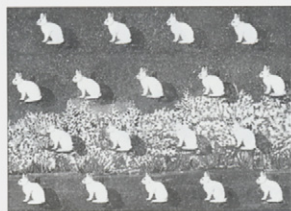
VARYING HARES

acrylic on paper

21.5 x 28.75 in. / 55 x 73 cm. Dated: 1979

signed, titled and dated on paper attached verso; ornate mat

ESTIMATE: 500/700



158



ICON #44/50

colour flocked silkscreen on paper

21 x 34 in. / 53 x 86 cm. Dated: 1981

signed, titled, dated and numbered along bottom;

Great Western Canadian Screen Shop chop lower left; archival mat

ESTIMATE: 300/400



THAUBERGER cont.

- 1**
5
9 VELVET DANCELAND #27/50
colour flocked silkscreen on paper
19 x 25 in. / 48 x 64 cm. Dated: 1980
signed, titled, dated and numbered along bottom;
Great Western Canadian Screen Shop chop lower left;
archival mat
ESTIMATE: 300/400



- 1**
6
0 FLOCKED BUNNIES #19/40
colour flocked silkscreen on paper
20.25 x 26.5 in. / 51 x 67 cm. Dated: 1977
signed, titled, dated and numbered along bottom;
Great Western Canadian Screen Shop chop lower left;
archival mat
ESTIMATE: 300/400



KEITH THOMSON

[b.1934] Canadian
ASA

biography and another example in *Founders of the A.C.A.*, by V.Greenfield, pg.102; see *Shell Canada Collection*, by B.Shammas, pg.55, Shell Canada, Calgary, 1977; biography in *Biographical Dict. of Saskatchewan Artists – Men*, by M.Newman, pg.258, Fifth House Pub., 1994

- 1**
6
1 UNTITLED – ALBERTA COLOR
watercolour on paper
19 x 26.25 in. / 48 x 67 cm.
signed lower right
ESTIMATE: 300/500



NANCY TICE

[b.1949] Canadian

- 1**
6
2 BARKING DOGS
mixed media on paper
24.5 x 29 in. / 62 x 74 cm.
titled lower centre; archival mat
Prov: Paul Kuhn Fine Arts, Calgary, stamp on backing
ESTIMATE: 400/500

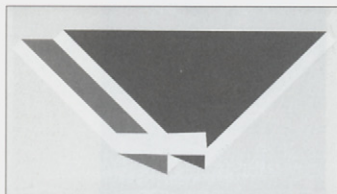


SERGE TOUSIGNANT

[b.1942] Canadian

included in *Contemporary Canadian Art*, by D.Burnett/M.Schiff, pg.202, Hurtig Pub., 1983; included in *La Collection Tableau Inaugural*, by P.Gagnon, M. d'art Contemporain, 1992; the artist teaches art and photography at the University of Montreal and is represented by le Galerie Graff, Montreal

- 1**
6
3 CIRCUIT DOUBLE #6/40
coloursilkscreen collage on cutout paper
13 x 29 in. / 33 x 74 cm. Dated: 1967
signed, titled, dated and numbered along right edge;
irregular edge
ESTIMATE: 300/400



- 164** CIRCUIT TOTEM #4/25
coloursilkscreen collage on cutout paper
22 x 25 in. / 56 x 64 cm. Dated: 1967
signed, titled, dated and numbered along bottom;
archival mat
Prov: Yajima / Galerie, Montreal, label verso
ESTIMATE: 300/400



ANGUS TRUDEAU

[1908-1984] Canadian
included in recent donation and exhibition at
the Hart House, Toronto of the Helen E. Band
collection; artist listed in *Artists in Canada –
a Union List of Artist's Files*, by S.Hasbury,
pg.714; Getty web site
http://shiva.pub.getty.edu/ulan_browser/

- 165** SULKY RACING
mixed media on paper board
22 x 28 in. / 56 x 71 cm.
signed on paper attached lower right; bears title on
gallery label verso
Prov: Isaacs Gallery, Toronto, label verso
ESTIMATE: 1,500/2,000



FRANK VERVOORT

[1930-1983] Canadian
see *Founders of the Alberta College of Art*, by
V.Greenfield, Alberta College of Art, illustration
pg.70, biography pg.104; *Spaces and Places:
Eight Decades of Landscape Painting in
Alberta*, by J.Ironside, pg.112

- 166** UNTITLED C
oil on canvas
26 x 30 in. / 66 x 76 cm.
signed and titled verso
ESTIMATE: 1,000/1,500



JANE WATANABE

20th century Canadian

- 167** UNTITLED – CYCLAMEN
watercolour on paper
29.75 x 21.75 in. / 76 x 55 cm.
signed lower right
ESTIMATE: 500/700



JOHN BARNEY WEAVER

[b.1920] Canadian

- 168** UNTITLED – HIGH LINEMAN #3/25
bronze sculpture
21 x 15 x 15 in. / 53 x 38 x 38 cm. Dated: 1986 ca
signed and numbered on base
Prov: 'British Columbia Pavilion, Expo '86' label verso;
Studio West Foundry, Cochrane stamp verso
ESTIMATE: 800/1,000



WEAVER cont.

1
7
6
9

UNTITLED – GEOLOGIST #3/25
bronze sculpture
19 x 8 x 6 in. / 48 x 20 x 15 cm. Dated: 1986 ca
signed and numbered on base
Prov: 'British Columbia Pavilion, Expo '86' label verso;
Studio West Foundry, Cochrane stamp verso
ESTIMATE: 800/1,000

1
7
0

UNTITLED – FISH CULTURIST #3/25
bronze sculpture
16 x 6 x 9 in. / 41 x 15 x 23 cm. Dated: 1986 ca
signed and numbered on base
Prov: 'British Columbia Pavilion, Expo '86' label verso;
Studio West Foundry, Cochrane stamp verso
ESTIMATE: 800/1,000

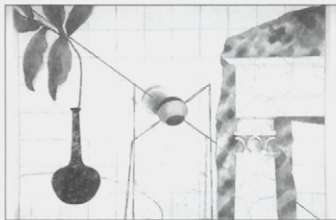


KENNETH WEBB

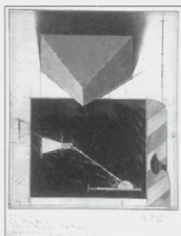
[b.1950] Canadian
Calgary artist has taught for many years at the
Alberta College of Art and Design

1
7
1

UNTITLED #12/20
hand coloured etching on paper
17.5 x 23.75 in. / 44 x 60 cm.
signed, titled and numbered along bottom
ESTIMATE: 300/400

1
7
2

COLOUR PROOF #UNIQUE
hand coloured etching on paper
17.75 x 14.75 in. / 45 x 37 cm. Dated: 1984
signed, dated and extensive inscription along bottom;
archival mat
ESTIMATE: 300/400

1
7
3

FLIGHT PATH #25/25
hand coloured etching on paper
15 x 23.5 in. / 38 x 60 cm.
signed, titled and numbered along bottom
ESTIMATE: 300/400



JAMES SIDNEY HAROLD WILLER

[b.1921] Canadian
exhibition list in *M.M.F.A.*, by E.McMann, pg.400

1
7
4

UNTITLED – PLASKETT IN AND OUT OF FOCUS
watercolour on paper
40 x 24 in. / 102 x 61 cm. Dated: 1981
signed and dated lower right; two sheets [20 inches high]
framed together
ESTIMATE: 600/800

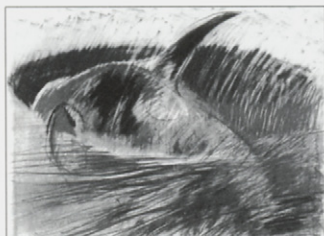


DON WRIGHT

[b.1931] Canadian

included in www.artcyclopedia.com

- 175** UNTITLED – KILLER AT ADMIRALS III
mixed media on paper
22.75 x 30.5 in. / 58 x 77 cm. Dated: 1982
signed and dated lower left; archival mat
ESTIMATE: 400/500

**TAN YIN**

20th century Canadian

- 176** UNTITLED – SCILLA
watercolour on paper
9.5 x 30 in. / 24 x 76 cm. Dated: 1980
signed and dated lower right; archival mat
ESTIMATE: 400/600

**VILLEM ZACH**

20th century Canadian

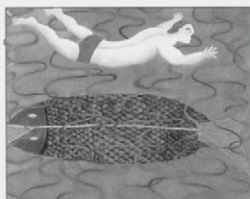
- 177** SHARE THE FLAME #37/50
bronze sculpture on wood base
16 x 13 x 9 in. / 41 x 33 x 23 cm. Dated: 1988
signed, dated and numbered on base; on wooden pedestal
ESTIMATE: 800/1,000

**JANE ZEDNIK**

[b.1953] Canadian

biography and another example in *Alberta Now*, by T.Fenton, EAG, 1980; represented by Russell Gallery of Fine Art and Susan Whitney Gallery, Regina

- 178** BELLY FLOP
oil on canvas
24 x 30 in. / 61 x 76 cm. Dated: 1981
signed, titled and dated verso
Prov: Susan Whitney Gallery, Regina, label verso
ESTIMATE: 400/500



- 179** SUNRISE SHEEP
oil on canvas
20 x 21.75 in. / 51 x 55 cm. Dated: 1980
signed, titled and dated verso
ESTIMATE: 300/400



- 180** UNTITLED – INDIGESTION
acrylic on paper
10.75 x 14.5 in. / 27 x 37 cm.
signed lower right; archival mat
ESTIMATE: 200/300

**Thank you for attending.**

Clients are reminded that the **NEXT AUCTION** is scheduled for May 6 & 7, 2001.

Please contact the office early regarding consignments or if there are particular artists you are looking for.

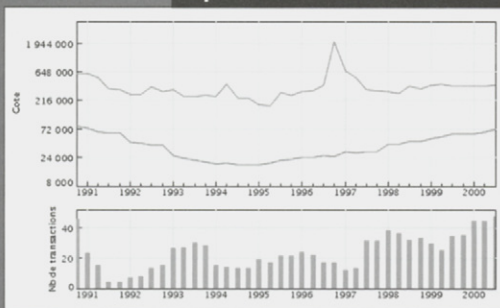
BIBLIOGRAPHY

- Agnes Etherington Art Centre – Permanent Collection*, by Frances Smith, published by the Agnes Etherington Art Centre, Queen's University, Kingston, 1968
- Art and Architecture in Canada: A Bibliography*, by Loren Lerner and Mary Williamson, published by the University of Toronto Press, Toronto, 1981
- The A.S.A. Index 1948-1980*, by Jan Roseneder, published by the University of Calgary Libraries, Calgary, 1982
- A Measure of Success – Graduates of the Alberta College of Art 1963-1984*, by Valerie Greenfield, published by the Alberta College of Art, Calgary, 1985
- Aquarelle – A History of the Canadian Society of Painters in Water Colour 1925-1985*, by Rebecca Sisler, published by the Canadian Society of Painters in Water Colour, Toronto, 1986
- Art Gallery of Hamilton Handbook*, by TR.MacDonald, published by the Art Gallery of Hamilton, Hamilton, 1964
- Art Gallery of Ontario – the Canadian Collection*, published by the Art Gallery of Ontario, Toronto, 1967
- ARTBANK: A Database of the Visual Arts in Canada*, compiled by Doug Levis, published by Artbank Incorporated, Calgary, 1993
- Artists, Builders and Dreamers – 50 Years at the Banff School*, by David and Peggy Leighton, published by McClelland and Stewart, Toronto, 1982
- Art Price Annual – ADEC 90, ADEC 91, ADEC 92, ADEC 93*, by Eric Michel, published by ADEC Production, Paris, 1990, 1991, 1992
- Artists in Canada – a Union List of Artists' Files*, by Susan Hasbury, published by the National Gallery of Canada Library, Ottawa, 1988
- Benezit – Dictionnaire des Peintres, Sculpteurs et Graveurs*, by E.Benezit, Vol. 1 thru 11, pub. Librairie Gründ, France, 1966
- Biographical Dictionary of Saskatchewan Artists – Women Artists*, by Marketa Newman, published by Fifth House Publishers, Saskatoon, 1990
- British Columbia Women Artists, 1885-1985*, by Nicholas Tuele, published by the Art Gallery of Greater Victoria, Victoria, 1985
- British Etchers 1850-1940*, by Kenneth M. Guichard, published by Robin Garton, London, 1981
- British Prints, Dictionary and Price Guide* by Ian Mackenzie, published by the Antique Collectors' Club, London, 1987
- Canadian Art Sales Index – Vol. 1 thru 14*, by Anthony Westbridge, published by Westbridge Publications Ltd., Vancouver, 1977 thru 1993
- Catalogue of the National Gallery of Canada, Ottawa – Canadian Art – Volume One / A-F*, by Charles Hill and Pierre Landry, published by the National Gallery of Canada, Ottawa, 1988
- Colgate – Canadian Art: Its Origin and Development*, by William Colgate, McGraw-Hill Ryerson, Toronto, 1943, 1967
- A Concise History of Canadian Painting*, by Dennis Reid, published by Oxford University Press, Toronto, 1973
- Contemporary Canadian Art*, by David Burnett and Marilyn Shiff, published by Hurtig Publishers, Edmonton, 1983
- WH Coverdale Collection of Canadiana: Paintings, Watercolours and Drawings*, by Martha Cooke, published by Public Archives Canada, Ottawa, 1983
- Dictionary of British Art, Volume V, British Artists, 1880-1990*, by Jane Johnson and A.Greutner, published by the Antique Collectors' Club, Ltd., London, 1980
- A Dictionary of Canadian Artists – Vol. 1 thru 7*, by Colin MacDonald, published by Canadian Paperbacks Publishing Ltd., Ottawa, 1967 thru 1990
- E.P.C. – Early Painters and Engravers in Canada*, by J. Russell Harper, published by the University of Toronto Press, Toronto, 1970
- The Flat Side of Landscape – the Emma Lake Artists' Workshops*, by John O'Brian, Ann Morrison, David Howard, Matthew Teitelbaum and Terry Atkinson, published by the Mendel Art Gallery, Saskatoon, 1989
- Founders of the Alberta College of Art*, by Valerie Greenfield, published by the Alberta College of Art, Calgary, 1986
- Gordon's Print Price Annual, 1990*, by Albert Wehner, published by Martin Gordon Inc., Naples, Florida, 1990
- Guide Vallee, III Edition*, by F. Vallee, pub. Le Guide Vallee, Quebec, 1992
- History of the Royal Academy 1768 – 1986*, by Sidney Hutchison, published by Robert Royce Limited, London, 1986
- History of Wood Engraving*, by Albert Garrett, published by Bloomsbury Books, London, 1978
- Inuit – see
- *Biographies of Inuit Artists*, published by Canadian Arctic Producers – a Division of Arctic Co-operatives Limited, Ottawa, 1984.
- *Inuit Artist Index Arranged by Last Name*, published by Indian and Northern Affairs Canada, Ottawa, January 1990
- Images of the Land: Canadian Block Prints 1919-1945*, by Patricia Ainslie, published by the Glenbow Museum, Calgary, 1984
- Landmarks of Canadian Art*, by Peter Mellen, published by McClelland and Stewart, Toronto, 1978
- The Mendel Art Gallery – Twenty-Five Years of Collecting*, by Matthew Teitelbaum, published by the Mendel Art Gallery, Saskatoon, 1989
- M.M.F.A. – Montreal Museum of Fine Arts – Spring Exhibitions 1980 – 1970*, by E.McMann, published by the University of Toronto Press, Toronto, 1988
- The Mountains and the Sky*, by Lorne Render, published by the Glenbow-Alberta Institute, Calgary, 1974
- The National Gallery of Canada Catalogue of Paintings and Sculpture – Volume II: Modern European Schools*, by R.H. Hubbard, published by the University of Toronto Press, Toronto, 1959
- The National Gallery of Canada Catalogue of Paintings and Sculpture – Volume III: Canadian School*, by R.H. Hubbard, published by the University of Toronto Press, Toronto, 1960
- Painting in Alberta – An Historical Survey*, by Karen Wilkin, published by the Edmonton Art Gallery, Edmonton, 1980
- Painting in Canada: a History*, by J. Russell Harper, published by the University of Toronto Press, Toronto, 1966
- Printmaking in Alberta 1945-1985*, by Bente Roed Cochran, published by the University of Alberta Press, Edmonton, 1989
- 1991/92 Printworld Directory – Contemporary Prints and Prices*, fifth edition, by Selma Smith, published by Printworld Inc., Bala Cynwyd, Pennsylvania, 1991
- Robinson – Canadian Landscape Painters*, by Albert Robinson, The Studio Limited, London, 1932
- Royal Canada Academy of Arts – R.C.A. – see
- *Passionate Spirits – A History of the Royal Canadian Academy of Arts, 1880-1980*, by Rebecca Sisler, published by Clarke, Irwin and Company, Toronto, 1980
- R.C.A.A. – Royal Canadian Academy of Arts, Exhibitions and Members 1880-1979*, by Evelyn de R.McMann, published by the University of Toronto Press, Toronto, 1981
- Selected View – The Longstaffe Collection 1959-1984*, by Lorna Farrell-Ward, published by the Vancouver Art Gallery, 1984
- Society of Canadian Painter-Etchers and Engravers in Retrospect*, by Andrew Oko, published by the Art Gallery of Hamilton, Hamilton, 1981
- Spaces and Places – Eight Decades of Landscape Painting in Alberta*, by Jetske Ironside, published by the Alberta Art Foundation, Edmonton, 1986
- University of Saskatchewan, Permanent Art Collection, 1980*, by Lynne Bell, published by the University of Saskatchewan, Saskatoon, 1980
- Vancouver – Art and Artists 1931-1983*, published by the Vancouver Art Gallery, Vancouver, 1983
- Visions – Contemporary Art in Canada*, by Robert Bringham, Geoffrey James, Russell Keziere and Doris Shadbolt, published by Douglas and McIntyre, Vancouver, 1983
- Western Untitled*, by Terrence Heath, published by the Glenbow-Alberta Institute, Calgary, 1976
- Winnipeg Art Gallery 1912-1962*, published by the Winnipeg Art Gallery, Winnipeg, 1962
- Winnipeg West – Painting in Western Canada 1945-1970*, by Christopher Varley, published by the Edmonton Art Gallery, Edmonton, 1983

artprice.com



2.5 million auction results
Detailed forthcoming auction calendar
179,000 artists from the 4th C. until now
Reports & Charts for each artist



the official sponsor




16th - 19th November
Carrousel du Louvre

**free tickets and
useful information
www.artprice.com**

www.artprice.com
the world leader in art market information

listed on the French Stock Exchange (NM 7478)

 **groupe-serveur** Sarl au capital de 598 539 000 Francs - RCS Lyon 408 309 270

take home the perfect dinner companion



Pasta served with Italian Wine, Magnifico

Merlo
VINOTECA

The Speciality Italian Wine Store in Calgary

www.merlogourmet.com

ABSENTEE BID FORM

I wish to place the following confidential bid(s) with LEVIS Fine Art Auctions & Appraisals for their sale. I agree that LEVIS Fine Art Auctions & Appraisals will, to the best of their ability, attempt to purchase for me the following lots up to the maximum amount specified below, or where indicated plus one incremental bid.

NOTE TO ABSENTEE BIDDERS: All bids are accepted subject to the 'Standard Conditions of Sale' printed in the catalogue. The Amount listed is for hammer price – the Buyer's Premium of 15% up to & including \$25,000, 10% thereafter and G.S.T. of 7% are in addition to the amounts listed below

LEVIS Fine Art Auctions & Appraisals
A Division of Artbank Incorporated
#128, 1711 – 10 Avenue S.W.
Calgary, Alberta T3C 0K1

Tel: (403) 541-9099

Fax: (403) 541-9097

Fax available until 12 noon DAY OF SALE
IN PERSON UNTIL 2 p.m. DAY OF SALE

AUCTION:
WEDNESDAY, JANUARY 17, 2001
until NOON

LOT NUMBER	ARTIST/ITEM	TOP HAMMER PRICE	PLUS ONE BID
------------	-------------	------------------	--------------

Payment may be made by cash, certified cheque, MasterCard, Visa or bank draft. Payment must be made in full the day of the auction.

DATE

NAME

ADDRESS

CITY

POSTAL CODE

RES

BUS

FAX

E-MAIL

Bank Reference:

MasterCard

ACCOUNT NO.

EXPIRY DATE

Visa

ACCOUNT NO.

EXPIRY DATE

I have read your Conditions of Sale printed in the catalogue and I am bidding in accordance with them.

SIGNATURE



11 SUMMER, 1979
watercolour 29.5x21.75 in./75x55 cm.
DAVID BOLDUCC \$1,000/1,200



12 PURPLE THRUST, 1974
silkscreen 29.25x21.5 in./74x55 cm.
JACK BUSH \$1,000/1,500



15 EIGHT SECONDS UP
bronze 27x18x17.5 in./69x46x44 cm.
C.R. CHEEK \$2,500/3,500



37 FALL ON THE LITTLE BOW
watercolour 28x20.75 in./72x53 cm.
TED GODWIN \$800/1,200



7 CAPTAIN LLEW KEAN, PASSING, 1979
colour etching on paper 21.75x27.5 in./55x70 cm.
DAVID BLACKWOOD \$2,000/2,500



18 FOOTHILLS BROWN, 1981
etching 16.75 x 18.5 in. / 43 x 47 cm.
JACK COWIN \$500/600



19 STEPHENS AVENUE MALL #1, 1983
oil on canvas 33.5 x 59 in. / 85 x 150 cm.
LYNNE CROUCH \$1,500/2,000



26 DE HAVILLAND 'TIGERMOTH'
oil on canvas 28 x 36 in. / 71 x 91 cm.
WALTER DROHAN \$2,000/2,500



39 BEGINNING WITH WINE, 1981
watercolour on paper 11 x 29.5 in. / 28 x 75 cm.
KATHLEEN GRAHAM \$700/900



20 APPIN AUG 30/78
watercolour on paper 6 x 9 in. / 15 x 23 cm.
GREG CURNOE \$900/1,200




33 BOUQUET
etching on paper 13.5 x 17.5 in. / 34 x 44 cm.
SUSAN FORD \$100/150



10 NIGHT JULY, 1982
acrylic on canvas 36 x 48 in. / 91 x 122 cm.
DAVID BOLDUCC \$1,500/2,000



36 BLUE WATER
oil on plywood 18 x 24 in. / 46 x 61 cm.
TED GODWIN \$1,500/2,000



Invest in an
Original.

The Calgary Children's Initiative is committed to ensuring that our city's children and youth have the means and resources to succeed in all aspects of life. We would like to express our sincere gratitude to Petro-Canada and you, our patrons, for your support. Please, bid generously.



Art has always had
a higher purpose.



Used with permission from the estate of Janet Mitchell.

Auction Lot #94

Petro-Canada is pleased to donate these selected works from our corporate collection to The Art of Caring auction. The proceeds will be used to support The Calgary Children's Initiative to benefit "every kid in Calgary" – a higher purpose that all of us can be truly proud of.





86
oil on canvas
DORIS MCCARTHY

BOATS ON THE BEACH
24 x 27 in. / 61 x 69 cm.
\$3,000/4,000



87
oil on canvas
ROBERT F.M. MCINNIS
ROAD NORTH, 1979
30 x 36 in. / 76 x 91 cm.
\$700/900



90
oil on canvas
ANNE MEGGIT
PHEASANT CREEK, 1984
37.5 x 48 in. / 95 x 122 cm.
\$900/1,200



91
mixed media on paper
JOHN MEREDITH
UNTITLED, 1980
13.75x16.75 in. / 35x43 cm.
\$700/900



92
oil on canvas
BARBARA MILNE
SHORELINE, 1984
16 x 21.75 in. / 41 x 55 cm.
\$900/1,200



96
oil on particle board
DAVID JOHN MORE
THE HERB GARDEN, 1983
24 x 24 in. / 61 x 61 cm.
\$800/1,200



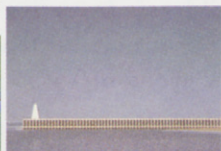
100
enamel on plywood
JOE NORRIS
THE COVE, 1981
14x18 in./36x46 cm.
\$900/1,200



105
silk screen
ROBERT DAVIDSON
THE SALMON COME BACK
29.5x41.5 in. / 75x105 cm.
\$700/900



117
acrylic
LESLIE POOLE
HYDRANGEA FLIGHT, 1980
24 x 24 in. / 61 x 61 cm.
\$1,000/1,200



118
silk screen
CHRISTOPHER PRATT
BREAKWATER, 1976
19.75x27.75 in. / 50x70 cm.
\$1,500/2,000



109
oil on plywood
TONI ONLEY
SPIRIT LAND, 1969
20x25.75 in./51x65 cm.
\$1,500/2,000



121
acrylic
DAVID PUGH
WINCHELL SWAMP #2, 1981
36 x 48 in. / 91 x 122 cm.
\$1,000/1,500



112
mixed media
BRUCE PASHAK
WOMAN IN YELLOW SHIRT
30.5x19.25 in./7x49 cm.
\$300/500



123 SUMMER REFLECTION, 1984
acrylic on canvas 56 x 60 in. / 142 x 152 cm.
WILLIAM ROBERTS \$3,000/4,000



128 MOVEMENT ABOVE LAND, 1974
acrylic on canvas 48 x 48 in. / 122 x 122 cm.
OTTO ROGERS \$2,500/3,500



134 HOUSE NEEDS FIXING, 1980
acrylic on canvas 18 x 23.75 in. / 46 x 60 cm.
ALLEN SAPP \$2,500/3,500



135 RECLINING PARASOL, 1981
mixed media on paper 13 x 23.5 in. / 33 x 60 cm.
TONY SCHERMAN \$1,500/2,000



140 HOUSE AND TREES, 1938-39
graphite on paper 12.5 x 16.5 in. / 32 x 42 cm.
JACK SHADBOLT \$2,000/3,000



138 HOMAGE TO MABALCOS, 1982
collage on paper 60 x 40 in. / 152 x 102 cm.
JACK SHADBOLT \$9,000/12,000



145 EVORA
colour lithograph on paper 14x18 in./36x46 cm.
JOHN SNOW \$300/500



153 THE LAND, 1977
acrylic on canvas 26 x 32 in. / 66 x 81 cm.
TAKAO TANABE \$1,200/1,500

WHAT THE HECK IS GOING ON
Never been to an auction before?
Please join us for a brief talk by
Doug Levis at the Preview on bidding
and buying at auctions.
Tuesday, January 16 at 7:30 p.m.



156 RAINBOW BRIDGE, 1981
acrylic on canvas 45 x 68 in. / 114 x 173 cm.
DAVID THAUBERGER \$3,000/5,000

PETRO-CANADA COLLECTION - INDEX



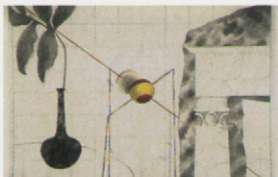
158
flocked silkscreen on paper 21 x 34 in. / 53 x 86 cm.
DAVID THAUBERGER
ICON, 1981
\$300/400



165
mixed media on paper board 22x28 in./56x71 cm.
ANGUS TRUDEAU
SULKY RACING
\$1,500/2,000



166
oil on canvas 26 x 30 in. / 66 x 76 cm.
FRANK VERVOORT
UNTITLED C
\$1,000/1,500



171
etching on paper 17.5 x 23.75 in. / 44 x 60 cm.
KENNETH WEBB
UNTITLED
\$300/400



178
oil on canvas 24 x 30 in. / 61 x 76 cm.
JANE ZEDNIK
BELLY FLOP
\$400/500

- 52 **A**leekuk; Agnes
1-2 Arts; Alexis
53 Ashevak; Kenojuk
- 3-4 **B**arry; Anne Meredith
5 Baxter; Joseph Iain Wilson
6 Besant; Derek Michael
7-9 Blackwood; David Lloyd
10-11 Bolduc; David
12 Bush; John [Jack] Hamilton
- 13 **C**ardinal-Schubert; Joane
14 Caron; Quentin
15-16 Cheek; Clifton Roy [C.R.]
17-18 Cowin; Jack Lee
19 Crouch; Lynne
20 Curnoe; Greg
- 21 **D**allin; Norman Hugh
104 Davidson; Robert Charles
105 Davidson; Robert Charles
22 Davis; Richard Thomas
23 Davison; Gertrude Elizabeth [Betty] Mary
24-25 Denyse; David
26-27 Drohan; Walter
28 Durie; Pat
- 29-30 **E**ckart; Christian
31 Esler; John Kenneth
54 Etidlui; Kingmeata
- 32 **F**oo Fat; Dulcie
33 Ford; Susan
34 Forrestall; Thomas [Tom] DeVany
- 35-38 **G**odwin; Edward William [Ted]
39-40 Graham; Kathleen Margaret Howitt
41 Griffith; Julius Edward Lindsay
- 42-44 **H**aeseker; Alexandra [Sandra]
45 Haigh; David
46-47 Harbuz; Ann
106 Harris; Walter
48 Hartman; John
49 Heywood; John Carl
50-51 Hopkins; Tom
- 52-59 **I**nuit; various
60 Irwin; Brock
61 Iskowit; Gershon
- 62-64 **J**anvier; Alex
- 65 **K**akegamic; Goyce
66 Kakegamic; Joshim
67 Kakegamic; Robert
68 Kelley; Brian
69 Kerr; Illingworth Holey
55 Kigusiuq; Janet
70 Kipping; Brian Mark
71 Klunder; Harold
72 Klunder; Harold
73-74 Knowles; Dorothy
75 Knudsen; Niels Christian
56 Kuanana; Timothy
- 76-77 **L**aing; William [Bill] John Houston
78-79 Laycock; Brent R.
80 Lochhead; Kenneth Campbell
- 81 **M**acPhee; Medrie
82 Masson; Henri Leopold
83 Matthews; Michael
57 Mamnguqsualuk; Victoria
84-85 McCargar; William C.
86 McCarthy; Doris Jean
88-87 McInnis; Robert F.M.
89 McVeigh; Don
90 Meggit; Anne
91 Meredith; John
92-93 Milne; Barbara
94 Mitchell; Janet
95 Molinari; Guido
96-97 More; David John
98 Morin; Madeleine
99 Morrisseau; Norval
107-108 Mowatt; Ken
- 58 **N**anogak; Agnes
100-103 Norris; Joe
104-108 North West Coast; various
- 109-111 **O**nley; Toni
59 Donark; Jessie
- 112 **P**ashak; Bruce
113 Pehuhodoff; William
114-115 Plaskett; Joseph
116-117 Poole; Leslie Donald
118 Pratt; John Christopher
119-120 Pratt; Mary Frances West
121 Pugh; David
- 122 **R**itchie; William [Bill] Brent
123 Roberts; William Griffith
124 Robinson; Clifford Foard
125 Rockett; Adeline
126-127 Rodriguez; Lupe
128-129 Rogers; Otto Donald
130-133 Ryley; Bryan
- 134 **S**app; Allen
135-136 Scherman; Tony
137 Serr; Janice [Jan] Joy
138-140 Shadbolt; Jack Leonard
141 Shives; Arnold
142 Shostak; Peter
143-144 Smith; Gordon Appellby
145-150 Snow; John Harold Thomas
151 Stone; Thomas Albert
- 152 **T**amasauskas; Otis
153-154 Tanabe; Takao
155 Tatossian; Armand
156-160 Thauberger; David
161 Thomson; Keith
162 Tice; Nancy
163-164 Tousignant; Serge
165 Trudeau; Angus
- 166 **V**ervoort; Frank
- 167 **W**atanabe; Jane
168-170 Weaver; John Barney
171-173 Webb; Kenneth
174 Willer; James Sidney Harold
175 Wright; Don
- 176 **Y**in; Tan
- 177 **Z**ach; Villem
178-180 Zednik; Jane