

# LEVIS

FINE ART & APPRAISALS

A DIVISION OF ARTBANK INC.

in conjunction with  
**CHERRY HILL AUCTIONS OF CANADA**  
**FINE ART AUCTION**

Monday and Tuesday, January 20 & 21, 1992 at 7:00 p.m.

at



Historic Park

750 9 Avenue S.E., Calgary, Alberta



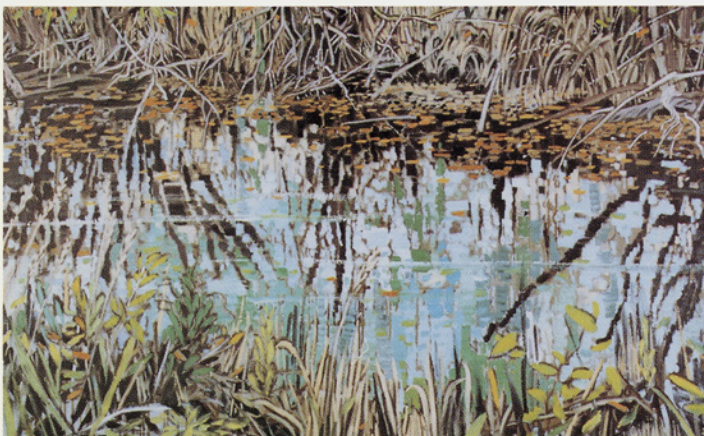
A.Y. Jackson

Lot 101



Barleigh

Lot 54



Ted Godwin

Lot 112



Clarence Gagnon

Lot 336



# LEVIS

FINE ART & APPRAISALS

A DIVISION OF ARTBANK INC.

#128 1711 10 Avenue S.W.  
Calgary, Alberta T3C 0K1  
Tel: (403) 541-9099 Fax: (403) 541-9097

## STANDARD CONDITIONS OF SALE

1. LEVIS Fine Art & Appraisal and 'we' refer, for all purposes relating to this auction, to the corporation LEVIS Fine Art & Appraisal, a Division of Artbank Incorporated.
2. A premium of 10% of the Hammer Price shall be added thereto and is payable by the Purchaser as part of the total Purchase Price.
3. Goods and Services Tax of 7% will be charged on the total of the Hammer Price and Buyer's Premium on all lots.
4. Although LEVIS Fine Art take care and diligence in their catalogue of the lots offered for auction, all Property is sold "as is" and neither we nor our agents, auctioneers or other personnel nor the Consignor makes any warranties or representations as to the correctness of the catalogue or other descriptions contained therein, of the physical condition, size, authenticity, or quality. Prospective bidders should inspect the property before bidding to determine its condition, size and whether the purchaser acquires any reproduction rights in the property.
5. Notwithstanding the preceding condition, if within twenty-one days of the sale of any lot, the Purchaser can provide us the written opinion of two acknowledged experts that the art, as outlined in the glossary, is in effect mis-described in substantial particular in the catalogue and within fourteen days after such notice the Purchaser returns the lot to us in the same condition as when sold, we as agent for the Consignor will rescind the sale and refund the Purchase Price received by them.
6. We reserve the right to withdraw any Property before the moment of sale.
7. Unless otherwise announced by the auctioneer, all bids are per lot as numbered in the catalogue.
8. We reserve the right to reject any bid. The highest bidder acknowledged by the auctioneer will be the purchaser. In the event of a dispute between bidders, or in the event of doubt on the part of us as to the validity of any bid, the auctioneer will have the final discretion either to determine the successful bidder or to reoffer and resell the article in dispute. If any dispute arises after the sale, our sale record is conclusive.
9. If the auctioneer decides without regard to the printed estimated price that any opening bid is below the value of the lot offered, he may reject the lot and withdraw the lot from the sale, and if, having acknowledged an opening bid, he decides that any advance thereafter is insufficient, he may reject the advance.
10. On the fall of the auctioneer's hammer, title to the offered lot will pass to the highest bidder acknowledged by the auctioneer, subject to conditions set forth herein, and such bidder thereupon
  - (a) assumes full risk and responsibility therefor,
  - (b) will sign a confirmation of the purchase thereof, and
  - (c) will thereupon pay the full Purchase Price therefor or such part as we may require. All Property must be removed from our premises by the purchasers at their expense not later than one business day following its sale and if is not so removed, a handling charge of 5% of the purchase price per month until removal of the property will be payable by the purchaser.
11. Payment in full must be made on the day of the sale by cash, certified cheque, travellers cheque, Visa, MasterCard or bank draft, unless other arrangements have been made with the auction house prior to the sale.

Catalogue: \$11.00 (G.S.T. included)  
\$13.00 by mail (G.S.T. included)



in conjunction with  
**CHERRY HILL AUCTIONS OF CANADA**  
**FINE ART AUCTION**

**PREVIEW:**

**Saturday, January 18th 10 A.M. to 5 P.M.**

**Sunday, January 19th 10 A.M. to 5 P.M.**

**Monday, January 20th 10 A.M. to 2 P.M.**

**AUCTION:**

**Monday, January 20th at 7:00 P.M.**

**Tuesday, January 21st at 7:00 P.M.**

**Preview and auction at:**



**HISTORIC PARK**

**750 9 Avenue S.E.**

**Calgary, Alberta**

For more information contact:



#128 1711 10 Avenue S.W.

Calgary, Alberta T3C 0K1

Tel: (403) 541-9099 Fax: (403) 541-9097

G.S.T. R121 033 252



# GLOSSARY

The following terms are used in the catalogue and description of the artists and lots:

**Walter Joseph Phillips** – artist

A.S.A., C.S.P.W.C., R.C.A. – associations (see below)  
[1884-1963] – date of birth and death of artist or [b.1952]  
Canadian – nationality

see – references for particular artist – extended bibliography may be found at the end of the catalogue.

While this is the highest category of authenticity and is in our opinion, a work by the artist, it is made without warranty as to authorship.

*ca.*  
circa

*fl*  
flourished in and around this time period

*signed*  
in our opinion, the work has been signed/titled/dated by the artist unless otherwise noted

*signed in plate/block*  
in our opinion the art work signed/titled/dated the artwork in the plate before printing

*bears signature/title/date*  
in our opinion the signature/title/date is by a hand other than the artist

*verso*  
on the reverse side

*archival mat*  
front mat is of archival material

*archival material throughout*  
work has been examined out of the frame and in our opinion all framing is of archival material

*Denglas*  
glazed with Denglas material

*unframed*  
all work is framed unless noted as unframed

*size*  
size is always height by width (by depth for sculpture) in inches rounded down to the nearest quarter of an inch and to the nearest whole centimetre

*Provenance*  
indicates previous owners either by way of labels and/or other information. This is not necessarily an indication of present ownership.

*LOT OF !!*  
more than one item in lot

*Estimate*  
an estimate of what the artwork may sell for but it is only intended as an estimate

The following abbreviations are used for professional associations and societies

*A.R.C.A.*  
Associate Royal Canadian Academy of Arts (1880)

*A.R.E.*  
Associate Royal Society of Painter-Etchers and Engravers

*A.S.A.*  
Alberta Society of Artists (1931)

*C.G.P.*  
Canadian Group of Painters (1933-1969)

*C.P.E.*  
Society of Canadian Painter-Etchers and Engravers (1916-1976)

*C.S.G.A.*  
Canadian Society of Graphic Art (1923-1976)

*C.S.P.W.C.*  
Canadian Society of Painters in Water Colours (1925)

*F.C.A.*  
Federation of Canadian Painters (1941)

*O.S.A.*  
Ontario Society of Artists (1872)

*R.A.*  
Royal Academy

*R.B.A.*  
Royal Society of British Artists

*R.C.A.*  
Royal Canadian Academy of Arts (1880)

*R.E.*  
Royal Society of Painter-Etchers and Engravers

*R.S.A.*  
Royal Scottish Academy

*R.M.S.*  
Royal Miniature Society

*S.W.E.*  
Society of Wood Engravers (1919)



# FIRST SESSION – Monday, January 20th at 7:00 p.m.

## Lot #1 through #150

### WILLIAM WINTER

C.G.P., C.S.P.W.C., O.S.A., R.C.A.

[b.1909]

Canadian

see *Art Gallery of Ontario, the Canadian Collection*, pg.518 for biography and another example in the Art Gallery of Ontario collection

#### 1 UNTITLED – MOTHER AND CHILD

pencil and wash on paper

11. x 8.5 in. | 28. x 22. cm.

signed lower left; archival mat front and back

Estimate: 200/300

#### 2 THERE WILL BE ICE SOON

conte on paper

16.5 x 13.5 in. | 42. x 34. cm.

signed lower right

Provenance: Kensington Fine Art Gallery,

Calgary, label verso; private collection, Calgary

Estimate: 300/500

#### 3 UNTITLED – MOTHER AND CHILDREN

pencil and wash on paper

11. x 8.5 in. | 28. x 22. cm.

signed lower right; inscribed 'Page 6, 66%' upper right; archival mat front and back

Reference: used as illustration in book *So You*

*Are Adopted*, by Jan Thompson, pg.5,

Children's Aid Society of Metropolitan

Toronto Foundation, 1984

Estimate: 300/400

#### 4 WAITING

oil on canvas board

10. x 8. in. | 25. x 20. cm.

signed lower right; titled verso

*illustrated*

Estimate: 600/800

### FREDERICK B. TAYLOR

C.P.E., C.S.G.A., R.C.A.

[1906-1987]

Canadian

#### 5 THE RACER #10/50

etching on paper

6.5 x 9. in. | 17. x 23. cm.

1933

initialed and dated in plate; signed, numbered, titled and inscribed along bottom; unframed

Reference: These two prints are of a series of etchings Frederick Taylor did on skiing

Estimate: 300/400

#### 6 DOWNHILL RACER #11/50

etching on paper

6.5 x 8.75 in. | 17. x 22. cm.

1933

initialed and dated in plate; signed, numbered, titled and inscribed along bottom; unframed

Estimate: 300/400

### PLEASE NOTE:

#### BUYER'S PREMIUM

A Premium of 10% will be added to the Hammer Price of all property sold. This Premium is payable by all purchasers.

#### GOODS AND SERVICES TAX

G.S.T. of 7% will be charged on the total of the Hammer Price and on the Buyer's Premium.

Additional notes may be found on the inside back cover for prospective buyers.



W. Winter



**BOOK**

**7 MODERN ETCHINGS, MEZZOTINTS AND DRY-POINTS - SPECIAL NUMBER OF THE STUDIO-1912/13**  
11.25 x 8. in. | 29. x 20. cm. 1913  
comments by M.C. Salaman, E.A. Taylor, P. Zilcken, A.S. Levetus, L. Deubner and T. Laurin; 194 illustrations; paper covers  
Estimate: 150/200

**BOOK**

**8 MODERN WOODCUTS AND LITHOGRAPHS - SPECIAL NUMBER OF THE STUDIO - 1919**  
11.5 x 8.5 in. | 29. x 22. cm. 1919  
comments by Malcolm C. Salaman with 12 colour reproductions and 161 monotone illustrations; hard cover  
Reference: see *Images of the Land, Canadian Block Prints 1919-1945*, by P.Ainslie, pg.20 regarding influence of this issue on Canadian block printers  
Estimate: 150/200

**9 LOT OF THREE BOOKS**

**GOING FISHING**  
10. x 7.5 in. | 25. x 19. cm. 1942  
angling views by Negley Farson; 16 wood engravings by C.F. Tunnicliffe; hard cover  
Published by Country Life London, London

**TOGETHER WITH**

**ETCHINGS, DRYPPOINTS AND LITHOGRAPHS OF ALPHONSE LEGROS 1837-1911**  
10. x 7.5 in. | 25. x 19. cm. 1931  
lecture delivered by Harold J.L. Wright; 18 illustrations; edition limited to 350 copies (number 326); hard cover  
Published by The Baynard Press, London for the Print Collectors' Club, London

**TOGETHER WITH**

**PAX OBBLIGATO**  
9.5 x 5.75 in. | 24. x 15. cm. 1937  
poem by Herbert Marks; 7 wood engravings by John Farleigh; hard cover with slip cover; inscribed by author  
Reference: John Farleigh listed in *Dictionary of British Artists 1880-1940*, by J.Johnson, pg.171  
Published by The Cresset Press, London  
**LOT OF 3** Estimate: 200/300



C. Robinson

Lot 19

**10 LOT OF TWO BOOKS**

**ENGLISH WOOD ENGRAVING 1900 - 1950**  
10. x 7.5 in. | 25. x 19. cm. 1951  
survey by Thomas Balston, over 100 engravings by E.Gill, E.Ravilious, G.Craig, R.Gibbings, B.Hughes-Stanton, J.Hassall and others; hardcover with dust cover  
Published by Art and Technics, London

**TOGETHER WITH**

**THE VENTURE - ANNUAL OF ART AND LITERATURE**  
10.5 x 8. in. | 27. x 20. cm. 1903  
edited by L.Housman and W.S.Maugham; woodblocks by C.Shannon, R.Savage, C.Ricketts, S.Moore, L.Pissarro, B.Sleigh, G.Craig, L.Glazier, E.Monsell, P.Woodroffe, S.Lee and L.Housman; hard cover  
Published by John Baille, London  
**LOT OF 2** Estimate: 150/200

**11 LOT OF TWO BOOKS**

**IMAGE: A QUARTERLY OF THE VISUAL ARTS: NO.6**  
9.75 x 7.25 in. | 25. x 18. cm. 1951  
articles by W.J.Strachan, C.Hennessy, J.Lewis (on Blair Hughes-Stanton), H.Wakefield and L.Housman; paper covers  
Published by Art & Technics, London

**TOGETHER WITH**

**IMAGE: A QUARTERLY OF THE VISUAL ARTS: NO.4**  
10. x 7.25 in. | 25. x 18. cm. 1950  
articles by W.J.Strachan, W.Walker, J.Mayne, R.Gainsborough (on John Buckland-Wright) and D.Sutton; paper covers  
Published by Art & Technics, London  
**LOT OF 2** Estimate: 250/350

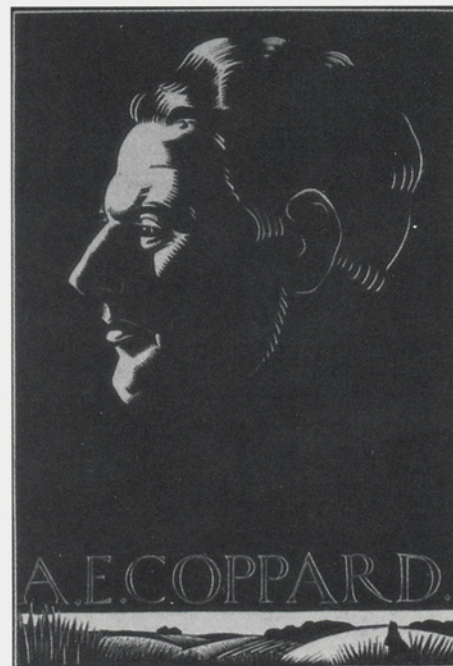
**ROBERT GIBBINGS**

founder S.W.E.  
[1889-1958] British  
see *Dictionary of British Artists 1880-1940*, by J.Johnson, pg.197 for biography and *A History of Wood Engraving*, by A.Garrett, pg.380, Director of the Golden Cockerel Press

**12 A.E. COPPARD #43/50**  
wood engraving on paper  
5.25 x 3.5 in. | 13. x 9. cm. 1928  
signed with initials in block lower right; signed and numbered below image; edition: 50 signed proofs; unframed  
Reference: frontispiece for *Count Stefan*, by A.E.Coppard, Golden Cockerel Press, 1928  
*illustrated* Estimate: 250/350

**13 PLOUGHING**

wood engraving on paper  
0.75 x 2.75 in. | 2. x 7. cm. circa 1914  
signed and inscribed 'To C.G.H.'; unframed  
Reference: used as illustration in *Modern Woodcuts and Lithographs, The Studio* magazine, 1919, pg.33  
Estimate: 200/300



R. Gibbings

Lot 12

**14 UNTITLED - BAY SEEN FROM HILLTOP**  
wood engraving on paper  
1.75 x 6.5 in. | 4. x 17. cm.  
initialed in block; signed below image; unframed  
Estimate: 200/300

**15 UNTITLED - TWO DOVES**  
wood engraving on paper  
2. x 4. in. | 5. x 10. cm.  
signed with initials in block lower left; signed with initials below image; unframed  
Estimate: 150/250

**16 UNTITLED - KNIGHTS IN A BOAT WITH THE LETTER N #7-10**  
wood engraving on paper  
5.75 x 4.5 in. | 15. x 11. cm.  
signed and numbered; unframed

**TOGETHER WITH**

**UNTITLED - KNIGHTS IN COMBAT #9-10**  
wood engraving on paper  
4.5 x 6. in. | 11. x 15. cm.  
signed and numbered; unframed  
**LOT OF 2** Estimate: 200/300

**17 UNTITLED - KNIGHTS WITH THE LETTER I #7-8**  
wood engraving on paper  
8.25 x 5.5 in. | 21. x 14. cm.  
signed and numbered; unframed

**TOGETHER WITH**

**UNTITLED - KNIGHTS IN A FOREST WITH THE LETTER I #8-8**  
wood engraving on paper  
6.75 x 5. in. | 17. x 13. cm.  
signed and numbered; unframed  
**LOT OF 2** Estimate: 200/300



**HARLEY WALTER BLAIT PARKER**

C.S.P.W.C.

[b.1915] Canadian  
exhibition list in *Royal Canadian Academy of  
Arts 1880-1979*, by E.McMann, pg.315;  
biography in *Dictionary of Canadian Artists*, by  
C.MacDonald, Vol.5 pg.1500

**18 CONTROVERSY**

woodblock on paper

13. x 9.75 in. | 33. x 25. cm.

signed and titled along bottom; several creases;  
stain in margin; archival material throughout;  
unframed

Reference: Parker was in the camouflage section  
during World War II at the same time as Cliff  
Robinson

Provenance: purchased from the artist Cliff  
Robinson; private collection

*illustrated* Estimate: 300/400

**CLIFFORD FEARD ROBINSON**

A.S.A., F.C.A.

[b.1917] Canadian  
see *Printmaking in Alberta 1945-1985*, by  
B.Cochran, pg.119; and *Images of the Land, Cana-  
dian Block Prints 1919-1945*, by P.Ainslie, for  
biography and other examples of the artist's work

**19 VANCOUVER, 1960 - PIGEONS ON A  
WALL**

oil on paper

20.25 x 27. in. | 51. x 69. cm. 1960

signed and dated lower right; titled and dated  
verso; unframed

Provenance: purchased from the artist; private  
collection

*illustrated* Estimate: 750/1,000

**20 FARM VENUS #15/15**

linoblock on paper

13. x 14.75 in. | 33. x 37. cm.

initialed in block lower right; signed, titled and  
numbered along bottom

Provenance: purchased from the artist; private  
collection

*illustrated in brochure* Estimate: 400/600

**21 EXSHAW, ALBERTA**

watercolour on paper

8.25 x 13. in. | 21. x 33. cm. circa 1939

signed lower right; titled verso; slight yellowing  
on very thin paper; archival material throughout

Provenance: Canadian Art Galleries, Calgary,  
label verso; private collection, Alberta

Estimate: 400/600

**22 SHIPYARD SHIFT**

coloured monotype on paper

17.5 x 13.25 in. | 44. x 34. cm.

signed along bottom; titled along top; archival  
material throughout; unframed

Provenance: purchased from the artist; private  
collection

Estimate: 300/500



H. Parker

Lot 18

**23 INCIDENT IN STANLEY PARK #6/15**

woodblock on tissue paper

16. x 12.25 in. | 41. x 31. cm.

signed, titled and numbered along bottom; some  
paper loss along margins; archival material  
throughout; unframed

Reference: 'Doukhobor Parade' was exhibited at  
the Jubilee Exhibition of Alberta Paintings,  
Coste House, 1955 from the collection of  
I.Kerr; in 1939 Doukhobor land was  
foreclosed in B.C. resulting in many  
demonstrations

Provenance: purchased from the artist; private  
collection

Estimate: 200/300

**24 FISHING VILLAGE, STEVESTON, B.C.  
#8/50**

woodblock on tissue paper

7.75 x 13.5 in. | 20. x 34. cm.

signed, titled and numbered along bottom;  
archival material throughout; unframed  
Provenance: purchased from the artist; private  
collection

Estimate: 200/300

**25 RAIN, LUMBER MILL #19/50**

woodblock on paper

4. x 5.75 in. | 10. x 15. cm.

signed, titled and numbered along bottom;  
archival material throughout; unframed  
Provenance: purchased from the artist; private  
collection

Estimate: 150/250

**NOBORU SAWAI**

[b.1931]

Canadian

see *Printmaking in Alberta 1945-1985*, by  
B.Cochran, pg.127 for biography and other  
examples of the artist's work

**26 SIGNS OF THE ZODIAC #84/100**

coloured etching on paper

24. x 19.75 in. | 61. x 50. cm.

titled bottom centre, signed and numbered  
centre; unframed

Reference: print exhibited at the 1976 Royal  
Canadian Academy of the Arts

Provenance: private collection, Regina

Estimate: 300/400

**JOHN KENNETH ESLER**

A.S.A., R.C.A.

[b.1933] Canadian  
see *Founders of the Alberta College of Art*, by  
V.Greenfield, pg.80 and *Printmaking in Alberta  
1945-1985*, by B.Cochran, pg.66 for biography  
and other examples of the artist's work

**27 ORANGE REVESTED #14/25**

relief print on paper

17. x 16. in. | 43. x 41. cm.

1969

signed, titled, dated and numbered along bottom  
Provenance: private collection, Calgary

**TOGETHER WITH**

MARILYN DYER

A.S.A.

[b.1933] Canadian

BIRD SPIRIT #3/7

lithograph on paper

20. x 13.5 in. | 51. x 34. cm. circa 1970

signed, titled and numbered along bottom  
Reference: art teacher with Calgary Board of  
Education in the early seventies

Provenance: private collection, Calgary

**LOT OF 2** Estimate: 200/300

**DEREK BESANT**

A.S.A., C.S.P.W.C., R.C.A.

[b.1950]

Canadian

see *Alberta Art, Works from the Alberta Art  
Foundation*, by L.Schmidt, for biography; and  
*Printmaking in Alberta 1945-1985*, by  
B.Cochran, pg.59 for biography and other  
examples of the artist's work

**28 DREAM OF THE WINDOWPANE OYSTER**

#4/10

collagraph on paper

16.5 x 16.5 in. | 42. x 42. cm.

signed, titled and numbered around bottom;  
circular shape

Provenance: private collection, Calgary

Estimate: 200/400

**BRUCE MURRAY**

[b.1957]

Canadian

**29 SPECTATOR #A.P.**

coloured etching on paper

17.75 x 11.75 in. | 45. x 30. cm. 1982

signed, titled, dated and numbered along  
bottom; edition of approximately 10; archival  
mat front and back

Provenance: Kensington Downtown Fine Art  
Gallery, Calgary, label verso; private  
collection, Calgary

Estimate: 300/400





J. Houston

Lot 38

**AGNES NANOGAK**

[b.1925] Canadian  
see *Biographies of Inuit Artists, Volume Two*,  
by Canadian Arctic Producers for biography and  
*Inuit Artist Index*, by Indian and Northern  
Affairs Canada, pg.124

**30 MOTHER, GIVE IT TO ME #40/50**

two-colour relief print on paper  
12. x 12.5 in. | 30. x 32. cm. 1972  
signed in block; titled, numbered and inscribed  
'Eskimo Western Arctic 1972' along bottom;  
Holman Island embossed chop lower right;  
paper size: 18 x 24  
Provenance: private collection, Calgary  
Estimate: 150/250

**JOBIE OHAITUK**

[b.1946] Canadian  
see *Inuit Artist Index*, by Indian and Northern  
Affairs Canada, pg.140

**31 AN OTTER, A FOX AND A PTARMIGAN #26/40**

stonecut on paper  
9.5 x 10. in. | 24. x 25. cm. 1974  
dated, numbered, and inscribed Inuit syllabics  
along bottom; chop lower right; paper size:  
19.5 x 20.5; unframed  
Provenance: private collection, Calgary  
Estimate: 100/200

**UNKNOWN - INUIT**

**32 UNTITLED - HUNTING #2/24**  
relief print on paper  
4.25 x 11. in. | 11. x 28. cm. 1972  
dated, numbered and inscribed in Inuit syllabics  
along bottom; embossed chop lower right  
below mat; paper size: 11.5 x 17.5; archival  
mat front and back  
Provenance: private collection, Calgary  
Estimate: 100/200

**KINGMEATA ETIDLUI**

[1915-1989] Canadian  
see *Biographies of Inuit Artists, Volume One*,  
by Canadian Arctic Producers for biography and  
*Inuit Artist Index*, by Indian and Northern  
Affairs Canada, pg.50

**33 BIRD ON KAYAK #35/50**

coloured stencil on paper  
16.25 x 22.5 in. | 41. x 57. cm.  
signed, titled, dated, numbered and inscribed  
'Dorset '79' along bottom; chop lower right  
below mat; paper size: 24 x 30.5  
Provenance: Kensington Fine Art Gallery,  
Calgary label verso; private collection, Calgary  
Estimate: 300/400

**LEAH QUMALUK**

[b.1934]  
see *Biographies of Inuit Artists, Volume Two*,  
by Canadian Arctic Producers for biography and  
*Inuit Artist Index*, by Indian and Northern  
Affairs Canada, pg.179

**34 MAN HUNTING IN SUMMER BY KAYAK #3/40**

two-colour stonecut on paper  
14.5 x 20.5 in. | 37. x 52. cm.  
signed, titled, dated, numbered and inscribed  
'Povungnituk'; two chops bottom corners;  
slight scuff; paper size: 19.5 x 28; unframed  
Provenance: private collection, Calgary  
Estimate: 150/250

**JOSIE (PAPERK) PAPIALUK**

[b.1918]  
see *Biographies of Inuit Artists, Volume Two*,  
by Canadian Arctic Producers for biography and  
*Inuit Artist Index*, by Indian and Northern  
Affairs Canada, pg.155

**35 BABY PTARMIGANS WITH THEIR MOTHER #11/40**

two-colour relief print on paper  
14.5 x 28. in. | 37. x 71. cm.  
dated, numbered and inscribed in Inuit syllabics  
along bottom; archival mat front and back;  
paper size: 24.75 x 35  
Provenance: private collection, Calgary  
Estimate: 200/300

**NOAH ECHALOOK**

[b.1946] Canadian  
see *Biographies of Inuit Artists, Volume One*,  
by Canadian Arctic Producers for biography and  
*Inuit Artist Index*, by Indian and Northern  
Affairs Canada, pg.44

**36 UNTITLED - MEN FISHING #1/40**

relief print on paper  
7.75 x 12. in. | 20. x 30. cm. circa 1976  
signed in syllabics and numbered along bottom;  
embossed chop lower right below mat; some  
yellowing of paper; paper size: 19.25 x 24.75;  
archival material throughout  
Provenance: private collection, Calgary  
Estimate: 100/200

**37 MAN MAKING KAYAK #1/40**

relief print on paper  
6. x 9. in. | 15. x 23. cm. circa 1976  
signed and titled in syllabics and numbered  
along bottom; embossed seal below mat; titled  
on label verso; slight yellowing of paper; paper  
size: 19.75 x 25; archival material throughout  
Provenance: private collection, Calgary  
Estimate: 100/200

**JAMES ARCHIBALD HOUSTON**

[b.1921] Canadian  
biography in *Dictionary of Canadian Artists*, by  
C.MacDonald, Vol.2 pg.474

**38 STONE CARVER - DORSET N.W.T.**

pencil on paper  
10.75 x 11. in. | 27. x 28. cm.  
signed and titled lower right; archival mat  
Provenance: Canadiana Galleries, Edmonton  
label verso  
illustrated Estimate: 400/500

**39 MOTHER AND CHILD - KINGNAIT BAFFIN ISLAND**

conte on paper  
8. x 8. in. | 20. x 20. cm. 1954  
signed, dated and titled lower right; archival  
mat  
Provenance: Canadiana Galleries, Edmonton  
label verso  
Estimate: 350/450

**LORENZO FRACCHETTI**

[b.1948] Canadian

**40 UNTITLED - HUNTER #26/78**

etching on paper  
7.5 x 9.5 in. | 19. x 24. cm. 1976  
signed, dated and numbered  
Provenance: Canadiana Galleries, Edmonton  
label verso  
Estimate: 100/200

**41 UNTITLED - HUSKY DOGS**

acrylic on canvas  
24. x 20. in. | 61. x 51. cm. 1980  
signed and dated lower right  
Provenance: private collection, Calgary  
illustrated Estimate: 1,000/1,500



L. Fracchetti

Lot 41



**MARY MARGUERITE PORTER  
ZWICKER**

[b.1904] Canadian  
exhibition list in *Royal Canadian Academy of  
Arts 1880-1979*, by E.McMann, pg.440

**42 UNTITLED – MARITIME SCENE**

watercolour on paper  
7.5 x 9.75 in. | 19. x 25. cm.  
signed lower right; archival mat  
Provenance: purchased from Zwicker's Gallery,  
Halifax; private collection, Calgary  
Estimate: 250/350

**ROBERT LEE CHADWICK**

[1905-1971] Canadian  
exhibition list in *Royal Canadian Academy of  
Arts 1880-1979*, by E.McMann, pg.67

**43 SURF ON BASS ROCKS, GLOUCESTER,  
MASS.**

oil on canvas board  
20. x 24. in. | 51. x 61. cm.  
signed lower right; signed and titled verso  
Provenance: private collection, Calgary  
Estimate: 400/600

**ARTHUR LIDSTONE**

[b.1903] Canadian

**44 BLUE ROCKS, NOVA SCOTIA**

oil on canvas board  
14. x 18. in. | 36. x 46. cm. 1956  
signed lower left; signed, titled and dated verso  
Provenance: Curry's Art Store stamp verso;  
private collection, Calgary  
Estimate: 200/400

**DON SCOTT**

[b.1933] Canadian

**45 UNTITLED – RURAL FARM**

acrylic on board  
18. x 24. in. | 46. x 61. cm. 1976  
signed and dated lower right  
Provenance: private collection, Calgary  
Estimate: 500/700

**46 UNTITLED LANDSCAPE**

oil on board  
9. x 12. in. | 23. x 30. cm. 1970  
signed and dated lower left  
Provenance: private collection, Calgary  
Estimate: 250/350

**NORMAN BROWN**

[20th century] Canadian

**47 BRAGG CREEK**

oil on board  
9. x 7. in. | 23. x 18. cm.  
signed lower left; titled on verso  
Provenance: LaFlamme Galleries, Calgary stamp  
verso; private collection, Calgary  
Estimate: 200/400



A. Law

Lot 48

**CHARLES ANTHONY FRANCIS LAW**

[b.1916] Canadian  
biography in *Dictionary of Canadian Artists*, by  
C.MacDonald, Vol.3 pg.753 and *Check List of  
The War Collection*, R.Wodehouse, pg.125 for  
biography and listing

**48 PHANTOM BERGS – BAFFIN BAY**

oil on canvas  
24. x 30. in. | 61. x 76. cm. 1981  
signed lower left; signed, titled and dated verso  
Provenance: Kensington Paperworks Galleries,  
Calgary, label verso  
illustrated Estimate: 1,000/1,500

**ROBERT F.M. MCINNIS**

[b.1942] Canadian  
biography in *Dictionary of Canadian Artists*, by  
C.MacDonald, Vol.4 addendum

**49 INDIAN RESERVE LAND**

oil on canvas  
12. x 16. in. | 30. x 41. cm. 1981  
signed and dated lower right; signed, titled and  
dated verso  
Estimate: 500/700

**50 BAPTIST CHURCH, WALMER ST.,  
TORONTO**

oil on canvas  
14. x 18. in. | 36. x 46. cm.  
signed lower left; titled on label verso  
Provenance: Pennell Gallery, Toronto, label  
verso; private collection, Montreal  
Estimate: 500/700

**ALAN CASWELL COLLIER**

O.S.A., R.C.A.  
[1911-1990] Canadian  
recently the R.C.A. presented an exhibition and  
catalogue of Alan's work *An Artist's Journey –  
Alan Collier, R.C.A.*

**51 NORTH COAST OF BYLOT ISLAND**

oil on panel  
12. x 16. in. | 30. x 41. cm. circa 1972  
signed; signed, titled, artist's number 'F111-76'  
and inscribed 'Aboard C.C.G.S. d'Tberville' on  
artist's label verso  
Reference: Alan Collier, as part of the Polar  
Continental Shelf Project, took three trips to the  
arctic, this being the first in 1972; see *Arctic  
Canada – Alan Collier*, Kensington Gallery  
Provenance: private collection, Calgary  
illustrated Estimate: 1,200/1,600

**52 LETNIKOF CANNERY**

oil on board  
19.75 x 29.75 in. | 50. x 76. cm.  
signed lower right; titled and artist's number 'F-82'  
on artist's label verso  
Provenance: Kensington Fine Art Gallery,  
Calgary, label verso; private collection, Calgary  
illustrated Estimate: 2,000/3,000

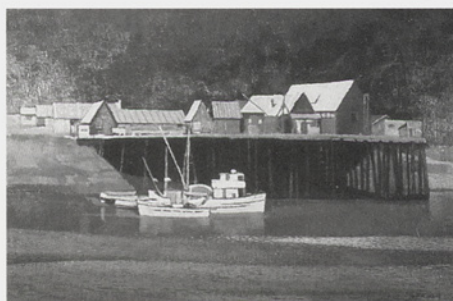
**53 JUST SOUTH OF SWIFT CURRENT, SASK.**

oil on board  
12. x 16. in. | 30. x 41. cm.  
signed lower right; titled and artist's number  
'E37-78' on artist's label verso  
Provenance: LaFlamme Fine Art Gallery,  
Calgary, label verso; private collection, Calgary  
Estimate: 1,000/1,500



A. Collier

Lot 51



A. Collier

Lot 52





Barleigh

Lot 54 & 55

**BARLEIGH**

**ALFRED CROCKER LEIGHTON**

A.R.C.A., A.S.A., C.S.P.W.C., R.B.A.

[1901-1965]

Canadian

**TOGETHER WITH**

**BARBARA LEIGHTON**

A.S.A., C.P.E.

[1911-1986]

Canadian

see *Printmaking in Alberta 1945-1985*, by B.Cochran, pg.100; and see *Images of the Land, Canadian Block Prints 1919-1945*, by P.Ainslie, for biography and other examples of the artist's work

**54 THE BARLEIGH PORTFOLIO – 21 PRINTS**

coloured woodblocks on paper  
various sizes; unframed in case with certificate  
of authenticity from the Leighton Foundation

**MT. ASSINIBOINE**

coloured woodblock on paper  
11.25 x 14.75 in. | 29. x 37. cm.  
unframed

**LUNETTE PEAK, MT. ASSINIBOINE**

coloured woodblock on paper  
12.75 x 15.75 in. | 32. x 40. cm.  
unframed

Reference: illustrated *Printmaking in Alberta 1945-1985*, by B.Cochran, pg.101

**SPRING ASSINIBOINE**

coloured woodblock on paper  
8. x 10.5 in. | 20. x 27. cm.  
unframed

**BOW LAKE**

coloured woodblock on paper  
11.75 x 14.5 in. | 30. x 37. cm.  
unframed

**EVENING, BOW LAKE**

coloured woodblock on paper  
11.75 x 14.75 in. | 30. x 37. cm.  
unframed

**CASTLE MOUNTAIN – MT. EISENHOWER**

coloured woodblock on paper  
12.75 x 16. in. | 32. x 41. cm.  
unframed

Reference: illustrated *Images of the Land, Canadian Block Prints 1919-1945*, by P.Ainslie, pg.115

**COOL WATER**

coloured woodblock on paper  
11.75 x 14.75 in. | 30. x 37. cm.  
unframed

**DEER, KANANASKIS**

coloured woodblock on paper  
10.75 x 10. in. | 27. x 25. cm.  
initialed 'ACL' below mat; unframed  
Reference: alternative title 'Deer, Winter'

**EMERALD LAKE**

coloured woodblock on paper  
11.5 x 14.75 in. | 29. x 37. cm.  
unframed

**FALL IN THE FOOTHILLS – 1ST STATE**

coloured woodblock on paper  
11.5 x 14.5 in. | 29. x 37. cm.  
unframed

**FALL IN THE FOOTHILLS – 2ND STATE**

coloured woodblock on paper  
11.5 x 14.5 in. | 29. x 37. cm.  
unframed

**MT. FAY**

coloured woodblock on paper  
12.5 x 15.75 in. | 32. x 40. cm.  
unframed



**HOMeward BOUND**

coloured woodblock on paper  
12.75 x 16. in. | 32. x 41. cm.  
unframed

**LAKE LOUISE (LARGE)**

coloured woodblock on paper  
12. x 14.75 in. | 30. x 37. cm.  
unframed

**LAKE LOUISE (SMALL)**

coloured woodblock on paper  
10.75 x 13.25 in. | 27. x 34. cm.  
unframed

**MORaine LAKE (LARGE)**

coloured woodblock on paper  
12. x 14.5 in. | 30. x 37. cm.  
unframed

**MORaine LAKE #18/100 (SMALL)**

coloured woodblock on paper  
9.75 x 12.75 in. | 25. x 32. cm.  
signed, titled and numbered along bottom;  
unframed

**RANGE GOSSIP**

coloured woodblock on paper  
11.25 x 15. in. | 29. x 38. cm.  
unframed

Reference: illustrated *Images of the Land, Canadian Block Prints 1919-1945*, by P.Ainslie, pg.94; exhibited Art Gallery of Toronto, 25th Annual Exhibition of the C.P.E., 1941

**THEY ALSO SERVE #10/100**

coloured woodblock on paper  
10.75 x 10. in. | 27. x 25. cm.  
signed, titled and numbered along bottom;  
unframed  
Reference: alternative title 'Western Family'

**THE TOWERS**

coloured woodblock on paper  
12. x 14.25 in. | 30. x 36. cm.  
unframed

**UNTITLED – SHIP AT DOCK**

coloured woodblock on paper  
13. x 16. in. | 33. x 41. cm.  
unframed

Reference: critical essay by the noted artist and Artistic Director of the Leighton Foundation, Terry Fenton  
Provenance: Leighton Foundation, Calgary, sold for the benefit of their Visiting Artist Program  
**LOT OF 21** Estimate: 7,000/9,000

**BARLEIGH – Continued**

**55 MT. ASSINIBOINE**

coloured woodblock on paper  
11.25 x 14.75 in. | 29. x 37. cm.  
unframed; with certificate of authenticity from the Leighton Foundation  
*Illustrated on cover* Estimate: 400/600

**56 FALL IN THE FOOTHILLS – 1ST STATE**

coloured woodblock on paper  
11.5 x 14.5 in. | 29. x 37. cm.  
unframed; with certificate of authenticity from the Leighton Foundation  
*Illustrated* Estimate: 400/600

**57 CASTLE MOUNTAIN – MT.**

**EISENHOWER**  
coloured woodblock on paper  
12.75 x 16. in. | 32. x 41. cm.  
unframed; with certificate of authenticity from the Leighton Foundation  
Reference: illustrated *Images of the Land, Canadian Block Prints 1919-1945*, by P.Ainslie, pg.115  
*Illustrated* Estimate: 400/600

**58 RANGE GOSSIP**

coloured woodblock on paper  
11.25 x 15. in. | 29. x 38. cm.  
unframed; with certificate of authenticity from the Leighton Foundation  
Reference: illustrated *Images of the Land, Canadian Block Prints 1919-1945*, by P.Ainslie, pg.94; exhibited Art Gallery of Toronto, 25th Annual Exhibition of the C.P.E., 1941  
*Illustrated* Estimate: 400/600

**59 DEER, KANANASKIS #50/100**

coloured woodblock on paper  
10.75 x 10. in. | 27. x 25. cm.  
signed, titled and numbered along bottom;  
unframed  
Reference: alternative title 'Deer, Winter'  
*Illustrated* Estimate: 400/600

**60 LAKE LOUISE (LARGE)**

coloured woodblock on paper  
12. x 14.75 in. | 30. x 37. cm.  
unframed; with certificate of authenticity from the Leighton Foundation  
*Illustrated* Estimate: 400/600

**61 MORaine LAKE #24/100**

coloured woodblock on paper  
12. x 14.75 in. | 30. x 37. cm.  
signed; titled and numbered along bottom;  
drymounted on mat board  
Provenance: Gainsborough Galleries, Calgary  
label verso; private collection, Calgary  
Estimate: 300/500



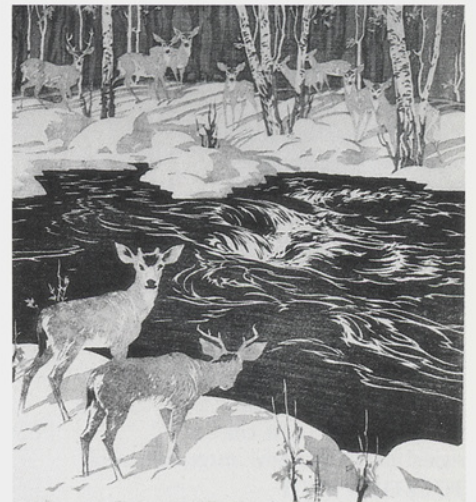
Barleigh

Lot 54 & 57



Barleigh

Lot 54 & 58



Barleigh

Lot 54 & 59



Barleigh

Lot 54 & 56



Barleigh

Lot 54 & 60



**CLARE VERONICA HOPE LEIGHTON**

R.E.  
[b.1900] British  
see *Dictionary of British Artists 1880-1940*, by  
J.Johnson, pg.307 for biography and *A History of  
Wood Engraving*, by A.Garrett, pg.386

**62 THE LONDON DOCKS**

wood engraving on paper  
6. x 4.25 in. | 15. x 11. cm. 1929  
signed, titled and dated below image; unframed

**TOGETHER WITH**

**THE RETURN OF THE NATIVE – THE  
WOMAN OF ANDROS #14/30**

wood engraving on paper  
5. x 4. in. | 13. x 10. cm. 1929  
signed and titled below image; unframed

**LOT OF 2** Estimate: 300/500

**63 SAINT PAUL'S CATHEDRAL #8/20**

wood engraving on paper  
6. x 4.25 in. | 15. x 11. cm. 1929  
signed and titled below image; unframed

**TOGETHER WITH**

**THE RETURN OF THE NATIVE – CLYM  
PREACHING #8/30**

wood engraving on paper  
5. x 3.75 in. | 13. x 10. cm. 1929  
signed and titled below image; unframed

**LOT OF 2** Estimate: 300/500

**64 THE RETURN OF THE NATIVE – TAMSIE  
#8/30**

wood engraving on paper  
5. x 3.75 in. | 13. x 10. cm. 1929  
signed and titled below image; unframed

**TOGETHER WITH**

**TAMSIE ON THE LADDER**

wood engraving on paper  
5. x 3.75 in. | 13. x 10. cm. 1929  
titled below image; inscribed 'Return of the  
Native' with artist's address verso; unframed

*illustrated*  
**LOT OF 2** Estimate: 300/500

**65 THE RETURN OF THE NATIVE –  
EUSTACIA AND CLYM #27/30**

wood engraving on paper  
5. x 3.75 in. | 13. x 10. cm. 1929  
signed and titled below image; unframed

**TOGETHER WITH**

**CALENDONIA MARKET #2/20**

wood engraving on paper  
6. x 4.25 in. | 15. x 11. cm. 1929  
signed and titled below image; unframed

**LOT OF 2** Estimate: 300/500

**66 THE RETURN OF THE NATIVE – TAMIN  
ROCKING THE CRADDLER #22/30**

wood engraving on paper  
5. x 3.75 in. | 13. x 10. cm. 1929  
signed and titled below image; unframed

**TOGETHER WITH**

**THE RETURN OF THE NATIVE – GAMBLING  
SCENE #8/30**

wood engraving on paper  
5. x 3.75 in. | 13. x 10. cm. 1929  
signed and titled below image; unframed

**LOT OF 2** Estimate: 300/500



M. Royds

Lot 67

**MABEL A. ROYDS**

[fl.1899-40] British  
see *Dictionary of British Artists 1880-1940*, by  
J.Johnson, pg.440 for biography; see another  
example of the artist's work in *Modern  
Woodcuts and Lithographs – Studio*, 1919, pg.43  
& 45; wife of Ernest Lumsden

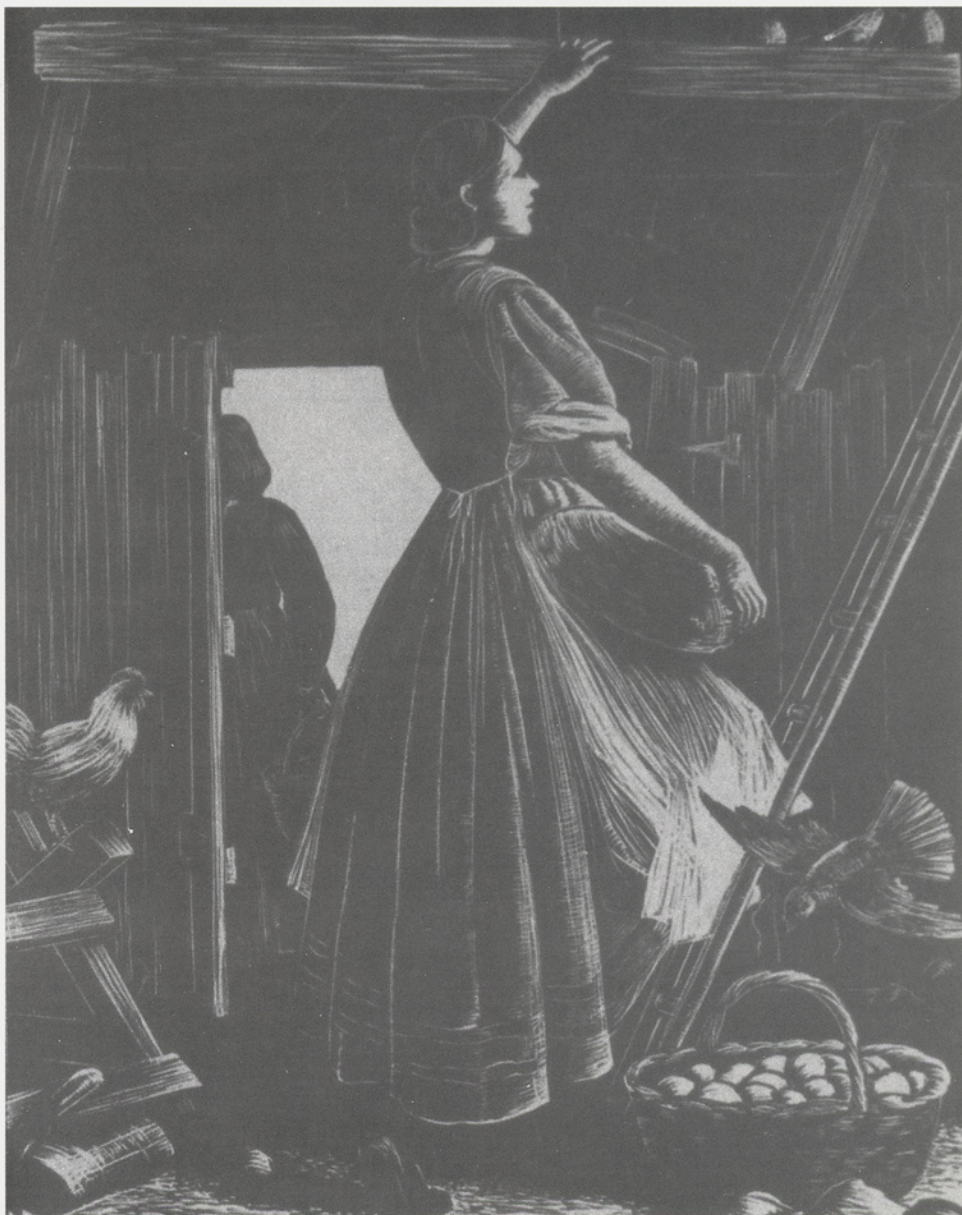
**67 THE GOAT HERD**

coloured woodblock on paper  
6. x 4.5 in. | 15. x 11. cm.  
signed and titled below mat; archival mat front  
and back  
*illustrated* Estimate: 500/700

**68 CHORTAUS**

coloured woodblock on paper  
10.75 x 8. in. | 27. x 20. cm. circa 1931  
signed and titled below mat; bears inscription  
below mat 'bought 1931 by E.J.C.Pearson';  
unframed

Estimate: 500/700



C. Leighton

Lot 64





E. Whydale

Lot 69

**ERNEST HERBERT WHYDALE**

A.R.E.  
[1886-1952] British  
see *Dictionary of British Artists 1880-1940*, by  
J.Johnson, pg.544 and *British Etchers 1850-1940*,  
by K.Guichard, pg.68 for biography

**69 THE CLUNCH PIT**

etching on paper  
10. x 12. in. | 25. x 30. cm.  
signed and titled along bottom; stamp 'K&G'  
verso; unframed  
Reference: print mentioned in *British Etchers*  
1850-1940, by K.Guichard, pg.68  
illustrated Estimate: 400/600

**70 PASSING SHOWERS**

etching on paper  
8. x 9.75 in. | 20. x 25. cm.  
signed and titled along bottom; stamp 'K&G'  
verso; unframed  
Reference: illustrated in *British Etchers 1850-*  
1940, by K.Guichard, plate 78  
Estimate: 400/600

**71 THE CHALK PIT**

etching on paper  
8. x 10. in. | 20. x 25. cm.  
signed and titled along bottom; stamp 'K&G'  
verso; unframed

**TOGETHER WITH**

**WOMAN HOEING**

etching on paper  
4.5 x 5. in. | 11. x 13. cm.  
signed and titled along bottom; stamp 'K&G'  
verso; unframed

LOT OF 2

Estimate: 300/500

**72 THE POTATO PIT**

etching on paper  
8. x 9.75 in. | 20. x 25. cm.  
signed and titled along bottom; stamp 'K&G'  
verso; unframed

**TOGETHER WITH**

**FARMERS BOY**

etching on paper  
7.5 x 6.25 in. | 19. x 16. cm.  
signed and titled along bottom; stamp 'K&G'  
verso; unframed

LOT OF 2

Estimate: 300/500

**73 HORSE DRAG**

etching on paper  
7.75 x 9.75 in. | 20. x 25. cm.  
signed and titled along bottom; stamp 'K&G'  
verso; unframed  
Reference: print mentioned in *British Etchers*  
1850-1940, by K.Guichard, pg.68

**TOGETHER WITH**

**THE PLOUGH**

etching on paper  
7.5 x 6.25 in. | 19. x 16. cm.  
signed and titled along bottom; stamp 'K&G'  
verso; unframed

LOT OF 2

Estimate: 300/500

**ERIC SLATER**

[fl.1928-37] British  
see *Dictionary of British Artists 1880-1940*, by  
J.Johnson, pg.463 for biography

**74 SEAFORD HEAD, SUSSEX**

coloured woodblock on paper  
10.25 x 13.75 in. | 26. x 35. cm.  
signed and titled below image; unframed

**TOGETHER WITH**

**TULIPS**

coloured woodblock on paper  
13. x 9.5 in. | 33. x 24. cm.  
signed and titled below image; unframed

illustrated

LOT OF 2

Estimate: 300/500

**ERIC HESKRETH HUBBARD**

[1892-1957] British  
see *Dictionary of British Artists 1880-1940*, by  
J.Johnson, pg.261 for biography

**75 PEDDLERS #35/50**

etching on paper  
9. x 11.75 in. | 23. x 30. cm.  
signed with initials in plate; signed, titled and  
numbered along bottom; unframed  
Reference: label verso states print included in  
institutions and collections such as the Art  
Institute, Chicago; Fitzwilliam Museum,  
Cambridge, etc.

**TOGETHER WITH**

**UNTITLED - HARVEST SCENE**

two colour woodblock on paper  
9. x 10.5 in. | 23. x 27. cm.  
signed with initials in block; signed below  
image; unframed

**TOGETHER WITH**

**THE CARAVANER'S YARN #TRIAL PROOF**

etching on paper  
6.25 x 8.25 in. | 16. x 21. cm.  
signed with initials in plate; signed, titled and  
numbered along bottom; unframed

LOT OF 3

Estimate: 300/500



E. Slater

Lot 74





School Lot 76



School Lot 77



School Lot 78



School Lot 79



School Lot 80



School Lot 81

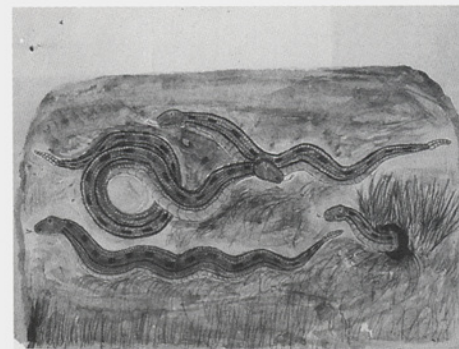
### 19TH CENTURY CANADIAN SCHOOL

Reference: see *Indian Days on the Western Prairies*, by Marius Barbeau, National Museum, 1965 for similar pieces and *When the West was Young*, by J.D. Higinbotham, Toronto, 1933 & 1978

Provenance: Estate of J.D. Higinbotham, who purchased these from a young Blood Indian boy, declaration attached

**76 CROWFOOT, CHIEF OF BLACKFEET**  
pencil, coloured pencil and wash on paper  
5.75 x 6. in. | 15. x 15. cm. circa 1890  
unsigned; titled verso; two holes upper left margin; archival material throughout; unframed  
Reference: see *Crowfoot, Chief of the Blackfeet*, by H. Dempsey, Hurtig, 1972  
*illustrated* Estimate: 500/700

**77 RED CROW, CHIEF OF BLOODS**  
pencil, coloured pencil and wash on paper  
6.25 x 7. in. | 16. x 18. cm. circa 1890  
unsigned; titled verso; two holes upper left margin; archival material throughout; unframed  
Reference: see *Red Crow, Warrior Chief*, by H. Dempsey, Western Producer Books, 1980  
*illustrated* Estimate: 500/700



School Lot 82

**78 INDIAN BUFFALO HUNT**  
pencil, coloured pencil and wash on paper  
6. x 8. in. | 15. x 20. cm. circa 1890  
unsigned; titled verso; two holes upper left margin; small tear in margin; archival material throughout; unframed  
*illustrated* Estimate: 500/700

**79 OWL SHOOTING BY BLACKFOOT INDIAN**  
pencil, coloured pencil and wash on paper  
6.25 x 8. in. | 16. x 20. cm. circa 1890  
unsigned; titled verso; two holes upper left margin; archival material throughout; unframed  
*illustrated* Estimate: 500/700

**80 BLACKFOOT TEPEE**  
pencil, coloured pencil and wash on paper  
6.25 x 8. in. | 16. x 20. cm. circa 1890  
unsigned; titled verso; two holes upper left margin; tear along left margin; stamp of E.N. Higinbotham, Lethbridge, Alberta verso; archival material throughout; unframed  
*illustrated* Estimate: 500/700

**81 U.S. SOLDIERS IN MONTANA**  
pencil, coloured pencil and wash on paper  
6. x 8. in. | 15. x 20. cm. circa 1890  
unsigned; titled verso; two holes upper left margin; tear into image upper left and upper right; archival material throughout; unframed  
*illustrated* Estimate: 500/700

**82 RATTLESNAKES**  
pencil, coloured pencil and wash on paper  
6.25 x 8. in. | 16. x 20. cm. circa 1890  
unsigned; titled verso; two holes upper left margin; tear along left margin; archival material throughout; unframed  
*illustrated* Estimate: 500/700



**JOHN WENTWORTH RUSSELL**

[1879-1959] Canadian  
see *The Canadian Art Club 1907-1915*, by R.Lamb, Edmonton Art Gallery, 1988 for biography and contribution; exhibition list in *Royal Canadian Academy of Arts 1880-1979*, by E.McMann, pg.360

**83 CHIEF HIND BULL AT TREATY**  
PAYMENT FAY, FORT MACLEOD, ALTA.  
OCT. 1909  
etching on paper  
10.75 x 7. in. | 27. x 18. cm. 1909  
signed; titled and dated on old label attached to back; archival material throughout  
*illustrated* Estimate: 400/600

**MILDRED VALLEY THORNTON**

[1890-1967] Canadian  
see *Mildred Valley Thornton, 1890-1967*, by Butler Galleries and Westbridge Fine Arts; artist's contribution to B.C. art in *B.C. Women Artists 1885-1985*, by N.Tuele, pg.15 and included in *100 Years of B.C. Art*, by C.Scott, Vancouver Art Gallery, 1958

**84 UNTITLED - INDIAN BABY**  
oil on panel  
10.5 x 8.25 in. | 27. x 21. cm.  
unsigned; letter of authenticity by Stephen Lunsford  
Reference: see *Mildred Valley Thornton, FRSA 1890-1967*, pg.56 for a similar painting, dated 1929 of a Cree baby in Qu'Appelle Valley  
Provenance: private collection, Victoria  
*illustrated* Estimate: 900/1,200

**ALLEN SAPP**

R.C.A.  
[b.1929] Canadian  
see *A Cree Life*, by A.Sapp. J.J.Douglas, 1977 and *Two Spirits Soar*, by W.Kinsella & A.Sapp, Stoddart, 1990

**85 UNTITLED PORTRAIT**  
coloured pencil on paper  
11.5 x 8.75 in. | 29. x 22. cm.  
signed; drymounted on mat board; several creases and small rip  
Provenance: Gainsborough Galleries, Calgary label verso; private collection, Calgary  
Estimate: 200/400

**E. DEWOLFE**

[fl.1929] American  
**86 NAVAJO LEADER**  
etching on paper  
8.75 x 7.75 in. | 22. x 20. cm. 1929  
dated in plate; signed and titled along bottom; unframed  
Estimate: 200/300



J. Russell

Lot 83



M.V. Thornton

Lot 84



E. Borein

Lot 91

**TONY HUNT**

[b.1942] Canadian

**87 TLINGIT RAVEN DANCE SCREEN #84/200**  
silk screen on paper  
15.75 x 16.25 in. | 40. x 41. cm. 1977  
signed, titled, dated and numbered along bottom; small scuff on bottom margin; unframed  
Estimate: 200/300

**88 BAPTISM MURAL #13/400**  
silk screen on paper  
22. x 12.75 in. | 56. x 32. cm. 1976  
signed, titled, dated and numbered along bottom; small stain on bottom margin; unframed  
Reference: original painting done for the Canadian Catholic Conference Art Collection  
Estimate: 200/300

**GEORGES LORANGER**

[b.1931] Canadian  
biography in *Dictionary of Canadian Artists*, by C.MacDonald, Vol.4 pg.898

**89 UNTITLED - INDIAN PORTRAIT**  
oil on canvas  
20. x 16. in. | 51. x 41. cm.  
signed lower left  
Provenance: Studio des Artistes Canadiens, Sillery, Quebec, stamp verso  
Estimate: 300/500

**DON FRACHE**

[b.1919] Canadian  
biography in *Dictionary of Canadian Artists*, by C.MacDonald, Vol.1 pg.233; honoured 1987  
Calgary Stampede Western Art Auction Patron

**90 UNTITLED - INDIAN PORTRAIT**  
oil on board  
19. x 16.5 in. | 48. x 42. cm. 1957  
signed and dated lower right  
Provenance: Clay's Picture Framing, Regina, label verso; private collection, Southern Alberta  
Estimate: 800/1,200

**EDWARD BOREIN**

[1872-1942] American  
see *Edward Borein, Cowboy Artist*, by H.Davidson, Doubleday, 1974; Borein designed the first Calgary and Exhibition Stampede poster in 1912, he attended the Stampede with Charlie Russell

**91 UNTITLED - MEXICAN STYLE**  
HORSERIDER  
etching on paper  
6. x 6.5 in. | 15. x 17. cm.  
bears signature in ink; laid down on mat board; some foxing; unframed; paper size: 6.25 x 6.75  
Provenance: private collection, Vancouver  
*illustrated* Estimate: 500/700

**92 UNTITLED - THREE COWBOYS**  
etching on paper  
5. x 8. in. | 13. x 20. cm.  
signed in plate lower right; faint impression; unframed; paper size: 6 x 9.25  
Provenance: private collection, Vancouver  
Estimate: 500/700



**WERNER PLANGG**

[b.1934] Canadian

**93 ELK ALBERTA #9/20**

etching on paper  
8.75 x 13.75 in. | 22. x 35. cm.  
signed, titled and numbered below image;  
unframed  
Provenance: private collection, Southern Alberta  
Estimate: 200/400

**HENRY J. CHARLES**

[fl.1950-53] Canadian

**94 HOME OIL #11, LEDUC**

oil on board  
29.5 x 19.5 in. | 75. x 50. cm. 1949  
signed with initials and dated lower right;  
signed, titled and dated verso  
Reference: exhibited *Alberta Society of Artists*  
1950 & 1953 show, titled Home Oil #19  
Provenance: private collection, Calgary  
Estimate: 100/200

**ROBERT GENN**

[b.1936] Canadian

biography in *Dictionary of Canadian Artists*, by  
C.MacDonald, Vol.2 addendum; *In Praise of*  
*Painting*, by R.Genn, Merritt Publishers, 1981

**95 THE CHURCH AT PAVILLION IN SNOW**

oil on canvas board  
12. x 11.75 in. | 30. x 30. cm. 1973  
signed lower left; signed, titled and dated verso  
Provenance: Gainsborough Galleries, Calgary,  
label verso; private collection, Edmonton  
Estimate: 800/1,000

**96 STUMP LAKE**

oil on canvas  
10. x 12. in. | 25. x 30. cm. 1973  
signed lower right; signed, titled and dated verso  
Provenance: Gainsborough Galleries, Calgary  
label verso; private collection Calgary  
Estimate: 500/700

**DUNCAN MACKINNON**

**CROCKFORD**

[1920-1991] Canadian

**97 WESTERN SKIES – NEAR COCHRANE**

ALBERTA  
oil on canvas  
12. x 14. in. | 30. x 36. cm. 1963  
signed lower left; titled and dated on label verso  
Reference: Purchased from Duncan's first show  
at Gainsborough Galleries  
Provenance: Gainsborough Galleries, Calgary  
label verso; private collection, Calgary  
*illustrated*  
Estimate: 1,000/1,200



D. Crockford

Lot 97

**RICHARD FREEMAN**

F.C.A.  
[1932-1991] Canadian  
see *Visual Arts Newsletter*, Vol.13, No.4, Dec.  
1991, pg.14 for biography

**99 NO LOT**

**GEORGIA JARVIS**

[1944-1990] Canadian

**98 UNTITLED – LAST LOOK, HORSE AND RIDER**

oil on board  
16. x 20. in. | 41. x 51. cm.  
signed lower right  
Provenance: private collection, Calgary  
Estimate: 1,000/1,200

**100 A TWILIGHT SCENE**

oil on board  
24. x 38. in. | 61. x 97. cm. 1981  
signed lower left; signed and titled verso  
Provenance: Johnson Gallery, Edmonton, label  
verso; private collection, Edmonton  
*illustrated*  
Estimate: 4,000/6,000



G. Jarvis

Lot 100





A.Y. Jackson

Lot 101

**ALEXANDER YOUNG JACKSON**

C.G.P., O.S.A., R.C.A.

[1882-1974]

Canadian

see *A Painter's Country - the Autobiography of A.Y. Jackson*, Clarke, Irwin & Company, 1958; *Alberta Rhythm*, by D.Reid, Art Gallery of Ontario, 1982; and *A.Y.'s Canada*, by N.J. Groves, pg.128 on for sketches of Alberta

**101 BECHTEL'S PLACE - TWIN BUTTES, ALTA.**

oil on panel

10.5 x 13.5 in. | 27. x 34. cm.

1949

signed lower right; dated June 20/49 on verso;

Naomi Jackson Groves inventory number

1473; painting on reverse

Provenance: Gift from artist; by descent to present owner; private collection, Southern Alberta

*illustrated on cover* Estimate: 8,000/10,000

**102 PEMBINA RIVER / UNTITLED**

MANITOBA LANDSCAPE

pencil on paper

9. x 11.5 in. | 23. x 29. cm.

titled lower left; Naomi Jackson Groves inventory

number 1491 lower left; drawing both sides;

several creases, small tears and paper loss on

corners; framed in two sided frame

Provenance: gift from artist to elevator operator

in Manitoba; gift to present owner, Calgary

Estimate: 1,000/1,500

**103 EPISY**

oil on board

7.25 x 9.25 in. | 18. x 23. cm.

1910

signed lower right; signed, titled and dated verso

Reference: in *A Painter's Country - the Autobiography of A.Y. Jackson*, pg.12-15, the artist talks of this time period in Episy, France

Provenance: Galerie Bernard Desriches, Montreal, label verso

Estimate: 7,000/9,000

**WILLIAM GOODRIDGE ROBERTS**

C.S.P.W.C., O.S.A., R.C.A.

[1904-1974]

Canadian

see *Goodridge Roberts, A Retrospective Exhibition*, by J.Borocoman, National Gallery of Canada, 1969; biography in *Dictionary of Canadian Artists*, by C.MacDonald, Vol.7 pg.2168

**104 UNTITLED - LAKESHORE VIEW**

watercolour on paper

9.75 x 11.5 in. | 25. x 29. cm.

1962

signed and dated lower right; drymounted

Reference: possibly included in show at the

Penthouse Gallery, Montreal in November of

that year; spent summer painting at Wakefield, Calumet, Georgian Bay and North Hartley

Provenance: Loch Art Gallery, Winnipeg, label verso

Estimate: 1,500/2,000

**HILDA STEWART**

R.M.S.

[1892-1978]

Canadian

see *Hilda Stewart, An Essay in Retrieving History*, by L.Bell, Mendell Art Gallery, 1990

**105 UNTITLED - PRAIRIE LANDSCAPE**

watercolour and graphite on paper

14.5 x 21.5 in. | 37. x 55. cm.

signed lower left

Provenance: James Art Studio, Saskatoon, with

date of 1965, and Art Placement, Saskatoon,

labels verso

Estimate: 300/400

**106 LOLUCA LAKE, SAN FERNANDO VALLEY, HOLLYWOOD**

watercolour on paper

13.5 x 17. in. | 34. x 43. cm.

signed lower right; titled verso

Provenance: The Tyrie Fine Art, Saskatoon, and

Art Placement, Saskatoon, label verso

Estimate: 200/300



**MAX MAYNARD**

[1903-1982] Canadian  
the Art Gallery of Greater Victoria published a catalogue *Max Maynard Landscape as Metaphor* in conjunction with a show in 1983

**107 TWISTED TRUNKS – SUSSEX SERIES**

coloured pencil and graphite on paper  
7. x 10. in. | 18. x 25. cm. 1973  
signed and dated lower right; titled verso; Max  
Maynard Estate inventory No.188 on label;  
archival mat front and back  
Provenance: Max Maynard Estate label verso;  
private collection, Victoria  
Estimate: 300/500

**MAUREEN ENNS**

A.S.A.  
[b.1943] Canadian  
see *Alberta Art, Works from the Alberta Art  
Foundation*, by L.Schmidt, for biography and  
*Beauty Pageant* by Peter Whyte Gallery, 1984

**108 CRISALIDA**

mixed media on heavy paper  
32.5 x 45.25 in. | 83. x 115. cm. 1985  
signed, titled and dated verso; archival mat  
front and back  
Provenance: private collection, Calgary  
*illustrated in brochure* Estimate: 2,000/3,000

**109 UNTITLED**

mixed media on paper  
29.5 x 21. in. | 75. x 53. cm. 1986  
signed and dated lower right  
Provenance: private collection, Calgary  
Estimate: 800/1,200

**110 UNTITLED**

mixed media on paper  
29.5 x 21. in. | 75. x 53. cm. 1986  
signed and dated lower right  
Provenance: private collection, Calgary  
Estimate: 800/1,200

**WILLIAM PEREHUDOFF**

R.C.A.  
[b.1919] Canadian  
see *William Pehudoff*, by R.Christie, Glenbow-  
Alberta Institute, 1977; biography in *Dictionary of  
Canadian Artists*, by C.MacDonald, Vol.5 pg.1596

**111 FLOWER FORMS**

oil on linen  
14. x 20.5 in. | 36. x 52. cm. 1959  
signed along bottom; titled on stretcher verso  
Reference: in 1957 the artist attended his first  
Emma Lake workshop with Will Barnet as  
workshop leader as well as in 1959 with  
workshop leader Herman Cherry  
Estimate: 750/1,000

**TED GODWIN**

R.C.A.  
[b.1933] Canadian  
see *Founders of the Alberta College of Art*, by  
V.Greenfield, pg.83 for biography and another  
example of the artist's work pg.52; see *Lower  
Bow, A Celebration of Wilderness, Art and  
Fishing*, by T.Godwin, published in conjunction  
with MacKenzie Art Gallery exhibition, 1991

**T. Godwin**

Lot 112

and major shows opening March 10, 1992 in  
Toronto, Regina, Calgary and Vancouver

**112 SUNNY DAY, BONE CREEK**

oil on canvas  
38. x 61. in. | 97. x 155. cm.  
artist's number, 'TG2443' and titled on stretcher  
verso  
Reference: see *Spaces and Places*, by J.Ironside,  
pg.82 for another painting of Bone Creek in  
the collection of the Alberta Art Foundation  
Provenance: private collection, Calgary  
*illustrated on cover* Estimate: 3,500/4,500

**JOSEPH FAFARD**

[b.1942] Canadian  
see *Joe Fafard - Cows and Other Luminaries  
1977-1987*, by M.Teitelbaum, Mendel Art  
Gallery, 1987; and *Saskatchewan: Art and  
Artists*, by Norman MacKenzie Art Gallery, pg.29  
for biography and *Visions, Contemporary Art in  
Canada*, ed. R.Keziere, pg.128

**J. Fafard**

Lot 113

**113 GWEN**

ceramic sculpture  
9.5 x 19.5 x 12.5 in. | 24. x 50. x 32 cm. 1972  
signed, titled and dated underneath; some  
defects noted  
*illustrated* Estimate: 4,000/6,000

**114 MOON'S EYE #17/50**

etching on paper  
17.5 x 23.75 in. | 44. x 60. cm. 1985  
signed, titled, dated and numbered around edges;  
archival mat front and back  
Estimate: 300/500

**115 ALBERT #71/100**

lithograph on paper  
20. x 16. in. | 51. x 41. cm. 1988  
signed, titled, dated and numbered along  
bottom; archival mat front and back  
Reference: edition for Canadian Cancer Society  
Estimate: 300/500



**JOHN PIPER**

[b.1903] British  
see *Dictionary of British Artists 1880-1940*, by J. Johnson, pg.403 for biography; *Avant-Garde British Printmaking 1914-1960*, by F. Carey, pg.140, British Museum Publications, 1990; and other examples in *Modern Prints and Drawings*, by P. Sachs, pg.183 and pl.169

**116 UNTITLED - CITY ABSTRACT #66/70**

lithograph on paper  
18. x 22.25 in. | 46. x 57. cm.  
signed and numbered along bottom; embossed chop lower right  
Provenance: private collection, Vancouver  
Estimate: 400/600

**OSCAR DOMINGUEZ**

[1906-1958] Spanish

**117 THE WINDOW #79/200**

lithograph on paper  
18.75 x 12.5 in. | 48. x 32. cm. circa 1940  
signed and numbered along bottom; bears title; embossed chop 'Guilde de la Graveur' lower left; slight scuffs; unframed  
Estimate: 400/600

**ULRIKE VOLL**

[fl.1984] German

**118 LIVING THE OTHER ...**

watercolour graphite and pastel on paper  
29.25 x 21.75 in. | 74. x 55. cm. 1984  
signed, titled and dated along bottom; archival mat front and back  
Estimate: 600/800

**PAUL WUNDERLICH**

[b.1927] German

see *1988/89 Printworld Directory*, pg.707, Printworld Inc. for biography; and *Selected View, The Longstaffe Collection 1959-1984*, by L. Ward, pg.122 for biography and another example of the artist's work

**119 ADAM AND EVE #E.A.**

lithograph on paper  
29.25 x 22.25 in. | 74. x 57. cm.  
signed and titled; unframed  
*illustrated in brochure* Estimate: 700/900

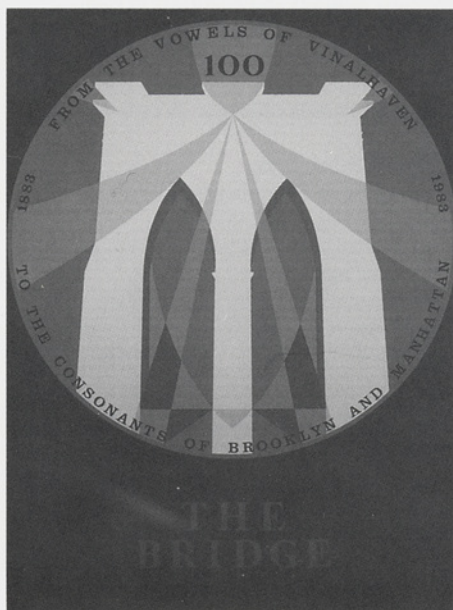
**LOUISE NEVELSON**

[1900-1987] American

see *1988/89 Printworld Directory*, pg.476, Printworld Inc. for biography

**120 NIGHT GARDEN #13/20**

etching on paper  
14.5 x 17.75 in. | 37. x 45. cm.  
signed, titled and numbered along bottom; 'ES' embossed chop lower right below mat; paper size: 22 x 29.75; number 7 inscribed verso  
Provenance: Pollock Gallery, Toronto label verso; private collection, Calgary  
*illustrated* Estimate: 1,500/2,500

**L. Nevelson****Lot 120****R. Indiana****Lot 121****H. Moore****Lot 124****ROBERT INDIANA**

[b.1928] American  
see *1988/89 Printworld Directory*, pg.303, Printworld Inc. for biography

**121 THE BRIDGE #37/250**

silkscreen on paper  
32. x 23. in. | 81. x 58. cm. 1983  
signed, dated and numbered along bottom; unframed  
*illustrated* Estimate: 1,500/2,000

**KARL APPEL**

[b.1921] Dutch

see *1988/89 Printworld Directory*, pg.24, Printworld Inc. for biography; and *Selected View, The Longstaffe Collection 1959-1984*, by L. Ward, pg.33 for biography and another example of the artist's work

**122 UNTITLED - COMPOSITION #E.A.**

silkscreen on paper  
20.25 x 26.25 in. | 51. x 67. cm.  
signed and numbered along bottom; unframed  
Estimate: 1,500/2,000

**MARK TOBEY**

[1890-1976] American

see *1988/89 Printworld Directory*, pg.654, Printworld Inc. for biography; *Emily Carr, A Biography*, by M. Tippett, pg.159 regarding Tobey's 'immense effect on Emily'

**123 CONFUSION #35/150**

lithograph on paper  
17.75 x 11.75 in. | 45. x 30. cm. 1975  
signed and numbered along bottom; 7 colour; unframed  
Estimate: 800/1,000

**HENRY MOORE**

R.S.A.

[1898-1986] British

see *1988/89 Printworld Directory*, pg.448, Printworld Inc. for biography and the definitive *Henry Moore, Catalogue of Graphic Works, in four volumes*, by H. Cramer, A. Grant, and D. Mitchinson, Geneva, 1973

**124 THREE RECLINING FIGURES #4/90**

lithograph on paper  
10.75 x 9. in. | 27. x 23. cm. 1971  
signed, dated and numbered along bottom  
Reference: catalogue #181 in *Henry Moore, Catalogue of Graphic Works 1931-1972*, by G. Cramer, A. Grant, D. Mitchinson, Geneva, 1973; edition of 90 plus 20 artist's proofs, in four colours  
*illustrated* Estimate: 2,500/3,500

**RUFINO TAMAYO**

[1899-1991] Mexican

see *1988/89 Printworld Directory*, pg.643, Printworld Inc. for biography

**125 FEMME AU COLLANT ROSE #80/150**

lithograph on paper  
27.25 x 21. in. | 69. x 53. cm. 1969  
signed and numbered along bottom; unframed  
Estimate: 3,000/5,000





W. Walcot

Lot 127

**PERCY FRANCIS GETHIN**

[1874-1916] British  
see *Dictionary of British Artists 1880-1940*, by J. Johnson, pg.197 and *British Etchers 1850-1940*, by K. Guichard, pg.39 for biography

**126 GERONA, SPAIN**

etching on paper  
6.75 x 11.75 in. | 17. x 30. cm.  
signed below image; titled and stamp 'K&G' verso; unframed

**TOGETHER WITH**

**SIR CHARLES HOLROYD**

R.E.  
[1861-1917] British  
see *Dictionary of British Artists 1880-1940*, by J. Johnson, pg.255 for biography, Keeper of the Tate and Director of the National Gallery 1906-19; and *British Etchers 1850-1940*, by K. Guichard, pg.43 for biography

**UNTITLED – SHADOW OF THE YEWE**

etching on paper  
8.75 x 13.25 in. | 22. x 34. cm.  
signed below image; bears inscription verso; unframed

Reference: *British Etchers 1850-1940*, by K. Guichard, mentions 'Yew Tree on Glaramara', pg.43

**LOT OF 2**

Estimate: 300/500



O. Staples

Lot 128

**WILLIAM WALCOT**

R.E.  
[1874-1943] British  
see *Dictionary of British Artists 1880-1940*, by J. Johnson, pg.522 for biography, born in Russia, trained as an architect; and *British Etchers 1850-1940*, by K. Guichard, pg.65

**127 UNTITLED – ENGLISH STREET SCENE**

etching on paper  
7. x 9.75 in. | 18. x 25. cm.  
signed lower right; small stain in margin; unframed  
*illustrated*

Estimate: 400/600

**OWEN P. STAPLES**

O.S.A., C.P.E., C.S.P.W.C.  
[1866-1949] Canadian  
see *Early Painters and Engravers in Canada*, by R. Harper, pg.297 for biography; exhibition list in *Royal Canadian Academy of Arts 1880-1979*, by E. McMann, pg.386; included in the National Gallery of Canada collection as early as 1928

**128 LONDON, 1908**

watercolour on Whatman board  
14.5 x 21.25 in. | 37. x 54. cm. 1909  
signed, titled and dated lower left; archival mat front and back  
Provenance: Petley Jones Gallery, Vancouver, and Masters Gallery, Calgary, labels verso  
*illustrated*

Estimate: 600/800

**THOMAS MOWER MARTIN**

O.S.A., R.C.A.  
[1838-1934] Canadian  
see *Early Painters and Engravers in Canada*, by R. Harper, pg.217 for biography; founding member of the O.S.A. and charter member of the R.C.A.; illustrated *Canada*, by W. Campbell, 1907

**129 BEACON HILL PARK, VICTORIA, B.C.**

watercolour on paper  
13.5 x 10. in. | 34. x 25. cm.  
signed lower right; bears inscription verso; laid down on paper board; archival mat front and back  
Reference: the *Royal Canadian Academy of Arts, Exhibitions and Members 1880-1979*, by E. McMann, pg.274 lists a watercolour by a similar name exhibited in 1903  
Provenance: Masters Gallery, Calgary, label verso

Estimate: 700/900



Rembrandt

Lot 130

**REMBRANDT HARMENSZ VAN RYN**

[1606-1669] Dutch

**130 ABRAHAM FRANSZ OR FRANZEN**

etching on paper  
6.125 x 8.25 in. | 16. x 21. cm. 1656  
unsigned; inscribed 'No.259' lower right; tape stains upper right and left corners into image, small tear upper edge; paper size: 6.5 x 8.375; verso stamped WK – Wilhelm Koller, respected collector of Rembrandt's prints  
Reference: Bartsch/White & Boon cat. #273; tenth of ten states; probably mid-18th century impression; *Rembrandt Etchings*, by H. Wright, Abbey Art Series, pg.135 & 15 – book included with lot  
Provenance: purchased circa 1962 from Vincent Price Collection show in Calgary; private collection, Calgary  
*illustrated*

Estimate: 1,000/1,500

**JAMES HERBERT SNELL**

[1861-1935] British  
see *Dictionary of British Artists 1880-1940*, by J. Johnson, pg.471 for biography

**131 UNTITLED – ENGLISH PASTORAL**

oil on canvas  
20. x 30. in. | 51. x 76. cm.  
signed lower right; canvas relined  
*illustrated*

Estimate: 2,000/2,500



J. Snell

Lot 131





W. Kurelek

Lot 132

**WILLIAM KURELEK**

O.S.A., R.C.A.

[1927-1977]

Canadian

see *Kurelek's Canada*, by W.Kurelek, Pagurian Press, 1978; *A Prairie Boy's Summer* and *A Prairie Boy's Winter*, by W.Kurelek; and *A Memoir of William Kurelek*, by B.Dedora; and *Enjoying Canadian Painting*, by P.Godsell, pg.179 for biography and other examples

**132 BARNDANCE #216/300**

photolithographic reproduction on paper

12. x 7.5 in. | 30. x 19. cm.

signed and number along bottom

Reference: illustrated *Kurelek's Canada*, by

W.Kurelek, pg.95 in Saskatchewan section

Provenance: LaFlamme Galleries, Calgary,

stamp verso; private collection, Calgary

*illustrated*

Estimate: 500/700



J.D. Turner

Lot 133

**JOHN DAVENALL TURNER**

A.S.A.

[1900-1980]

Canadian

see *Sunfield Painter, The Reminiscences of John Davenall Turner*, by J.Turner, University of Alberta Press, 1982 and *The Artful Codger*, by J.Turner, Whyte Foundation, Banff, 1978

**133 WESTERN LANDSCAPE**

oil on canvas

18. x 24. in. | 46. x 61. cm.

signed lower right

Provenance: private collection, Calgary

*illustrated in brochure*

Estimate: 600/800

**JANET MITCHELL**

A.S.A., C.S.P.W.C., R.C.A.

[b.1912]

Canadian

see *Janet Mitchell, Life and Art*, by P.Armstrong, Hyperion Press, 1990 and *National Gallery of Canada, Painting and Sculpture, Volume III, Canadian School*, by R.Hubbard, pg.219, for biography and another example of artist's work in the National Gallery of Canada's collection

**134 FARMERS FIELD II**

watercolour on paper

12.25 x 20. in. | 31. x 51. cm.

1959

signed and dated lower right; titled verso

Reference: see *Janet Mitchell - Life and Art*, by

Peggy Armstrong, chapter 4 for other examples of her work at this time

Provenance: estate, private collection, Winnipeg

*illustrated in brochure*

Estimate: 600/800

**135 UNTITLED - LANDSCAPE**

watercolour on paper

10. x 13. in. | 25. x 33. cm.

signed with initials lower right

Provenance: Kensington Fine Art Gallery,

Calgary, label verso; private collection, Calgary

Estimate: 400/600

**136 MANY HAPPY RETURNS**

watercolour on paper

11.25 x 7.75 in. | 29. x 20. cm.

1981

signed and dated lower left; inscription attached

verso; tipped on card with tape

Provenance: Gainsborough Galleries, Calgary,

label verso; private collection, Calgary

Estimate: 400/600

**SHIRLEY WATSON**

[fl.1987]

Canadian

**137 HILLTOP ESCAPE**

oil on canvas

30. x 70. in. | 76. x 178. cm.

1987

signed lower right; signed, titled and dated verso

Provenance: Kensington Downtown Fine Art

Gallery, Calgary, label verso; private

collection, Calgary

Estimate: 500/800



J. Mitchell

Lot 134

**DEBORAH LOUGHEED SINCLAIR**

A.S.A.

[b.1953]

Canadian

**138 SUNDOWN - MORLEY FLATS**

acrylic on canvas

20. x 25. in. | 51. x 64. cm.

1982

signed lower right; signed, titled and dated verso

Provenance: Kensington Downtown Fine Art

Gallery, Calgary, label verso; private

collection, Calgary

Estimate: 700/900

**KARL WOOD**

[1944-1990]

Canadian

feature artist, 1988 Calgary Stampede Art Show

**139 HIGHWOOD PASS**

oil on canvas

12. x 16. in. | 30. x 41. cm.

signed lower left; titled on stretcher verso

Provenance: private collection, Calgary

*illustrated*

Estimate: 1,000/1,500



K. Wood

Lot 139





J. Plaskett

Lot 147

**MARJORIE PIGOTT**

C.S.P.W.C., O.S.A., R.C.A.  
[1904-1990]

Canadian

biography in *Dictionary of Canadian Artists*, by C.MacDonald, Vol.6 pg.1696

**140 UNTITLED – FLORAL LANDSCAPE**

watercolour on paper  
21.75 x 19.5 in. | 55. x 50. cm. circa 1970  
signed lower right; tipped on upper edge  
Provenance: private collection, Calgary

Estimate: 1,200/1,500

**141 UNTITLED – PASTORAL BEAUTY**

watercolour on paper  
21.5 x 18. in. | 55. x 46. cm.  
signed lower right; archival mat front and back  
Provenance: private collection, Calgary

Estimate: 1,000/1,500

**HORACE CHAMPAGNE**

[b.1937]

Canadian

**142 APPROACHING WARM FRONT – FROM ROCKY MOUNTAIN RANCH, TURNER VALLEY, ALBERTA**

pastel on paper  
12. x 15. in. | 30. x 38. cm. 1982  
signed lower left; signed, titled and dated verso  
Reference: used as invitation piece for David Edwards Gallery, Bragg Creek, show March 25, 1984; invitation attached to back  
Provenance: private collection, Calgary

Estimate: 500/700

**143 SUNRISE, CHARLEVOIX COUNTRY**

pastel on paper  
5. x 7. in. | 13. x 18. cm. 1981  
signed lower right; signed, titled and dated verso  
Provenance: private collection, Calgary

Estimate: 350/550

**SIDNEY CHARLES JOSEPH GOLDSMITH**

[b.1922]

Canadian

exhibition list in *Royal Canadian Academy of*

*Arts 1880-1979*, by E.McMann, pg.151; biography in *Dictionary of Canadian Artists*, by C.MacDonald, Vol.2 pg.290; and *National Gallery of Canada, Painting and Sculpture, Volume III, Canadian School*, by R.Hubbard, pg.103, for biography and similar example of artist's work in the National Gallery of Canada's collection

**144 UNTITLED – PORTRAIT**

ink and wash on paper  
14. x 9.75 in. | 36. x 25. cm. 1949  
signed and dated upper right; archival mat front and back

Provenance: private collection, Montreal  
Estimate: 300/400

**GASTON REBRY**

[b.1933]

Canadian

biography in *Dictionary of Canadian Artists*, by C.MacDonald, Vol.7 pg.1959

**145 BORD D'UN FOREST**

oil on canvas  
18. x 24. in. | 46. x 61. cm. 1990  
signed lower right; signed, titled, dated and artist's stamp verso

Estimate: 900/1,200

**LITTORIO DEL SIGNORE**

[b.1938]

Canadian

**146 RUE ONTARIO ET ST. CHRISTOPHE, MONTREAL, 1984**

oil on canvas  
20. x 24. in. | 51. x 61. cm. 1984  
signed lower right; signed, titled and dated verso  
Provenance: Masters Gallery, Calgary, label verso

Estimate: 900/1,200

**JOSEPH PLASKETT**

R.C.A.

[b.1918]

Canadian

see *Joe Plaskett and His Paris, In Search of Time Past*, by Fine Arts Gallery, University of

B.C., 1971; biography in *Dictionary of Canadian Artists*, by C.MacDonald, Vol.6 pg.1732

**147 BRUSSEL'S SPROUTS**

oil on canvas  
8.75 x 23.5 in. | 22. x 60. cm. 1965  
signed and dated lower right; titled on stretcher verso  
*illustrated*

Estimate: 500/700

**NARCISSE POIRIER**

[1883-1983]

Canadian

exhibition list in *Royal Canadian Academy of Arts 1880-1979*, by E.McMann, pg.331; biography in *Dictionary of Canadian Artists*, by C.MacDonald, Vol.6 pg.1749

**148 RUELLE AU CLAIR DE LUNE – TROIS RIVIERE**

oil on canvas board  
8. x 10. in. | 20. x 25. cm.  
signed lower left; titled verso  
Provenance: Art & Style Gallery, Montreal label verso

Estimate: 300/500

**149 VIELLE MAISON CANADIENNE**

oil on canvas board  
8. x 10. in. | 20. x 25. cm.  
signed lower right; titled verso  
Provenance: Art & Style Gallery, Montreal, label verso

Estimate: 300/500

**GERALD SEVIER**

O.S.A., R.C.A.

[b.1934]

Canadian

see *The A.S.A. and the O.S.A. – A Collaborative Exhibition 1984-1985*, pg.43 for another example of the artist's work

**150 VISTA #88**

oil on canvas  
24. x 32. in. | 61. x 81. cm.  
signed lower right; titled verso  
Provenance: private collection, Calgary

Estimate: 400/600

**END OF FIRST NIGHT**



# SECOND SESSION – Tuesday, January 21st at 7:00 p.m.

## Lot #201 through #350

### BARTLEY ROBILLIARD PRAGNELL

A.S.A.

[1907-1966]

Canadian

see *Bart Pragnell: A Retrospective*, by G.Moppett, Mendel Art Gallery, Saskatoon, 1990; biography in *Dictionary of Canadian Artists*, by C.MacDonald, Vol.6 pg.1811

#### 201 UNTITLED – ABSTRACT

oil on canvas board

16. x 11.75 in. | 41. x 30. cm.

circa 1955

unsigned

Provenance: Art Placement, Saskatoon, label verso

Estimate: 600/800

#### 202 SUBWAY, CALGARY, ALTA. ABOUT

1941

watercolour on paper

11.5 x 9. in. | 29. x 23. cm.

circa 1941

signed with estate stamp and titled by brother verso; archival mat; unframed

Provenance: purchased from Kensington Fine Art Gallery, Calgary; private collection, Southern Alberta

illustrated on cover

Estimate: 700/900

#### 203 KITCHEN MODELS

oil on illustration board

20. x 29.75 in. | 51. x 76. cm.

circa 1948

signed and titled verso

Provenance: Art Placement, Saskatoon, stamp verso

illustrated

Estimate: 1,500/2,000

### HENRY ERIC BERGMAN

C.P.E., C.S.P.W.C., R.C.A.

[1893-1958]

Canadian

see *Transformation of Visions, The Works of H.Eric Bergman*, by N.Dillow, Winnipeg Art Gallery, 1983; and *Images of the Land, Canadian Block Prints 1919-1945*, by P.Ainslie, for biography and other examples of the artist's work

#### 204 UNTITLED – FROSTY MORN

coloured woodblock on card

2.75 x 3. in. | 7. x 8. cm.

signed; inscribed inside card

Provenance: Private collection, Vancouver

Estimate: 400/600

#### 205 FIR TREES IN SNOW

wood engraving on paper

4.25 x 4. in. | 11. x 10. cm.

1926

signed and dated in block upper right; paper trimmed and repaired below mat; some heightening with black in trees; archival mat front and back

Reference: see *The Mountains and the Sky* by L.Render, pg.123 for illustration and review of artists work in the collection of the Glenbow  
Provenance: private collection, Montreal

Estimate: 300/500



B. Pragnell

Lot 202



B. Pragnell

Lot 203



**MARGARET SHELTON**

A.S.A.  
[1915-1984] Canadian  
see *Margaret Shelton: Block Prints 1936-1984*, (MSBP #), by P.Ainslie, Glenbow Museum; and *Printmaking in Alberta 1945-1985*, by B.Cochran, pg.132; and *Images of the Land, Canadian Block Prints 1919-1945*, by P.Ainslie, for biography and other examples of the artist's work

**206 BARN AT TABER #10/25**  
coloured linoblock on paper  
4.5 x 6.25 in. | 11. x 16. cm. 1941  
signed, titled, dated and numbered along bottom;  
archival material throughout; unframed  
Reference: *MSBP #55*, four colours, edition: 25;  
print tipped in to *Highlights*, ASA magazine,  
December, 1950  
Provenance: purchased from artist; private  
collection, Southern Alberta  
*illustrated* Estimate: 400/600

**207 RURAL MAIL ROUTE #44/75**  
woodblock on paper  
7.5 x 10.25 in. | 19. x 26. cm. 1942  
signed in block lower right; signed, titled and  
numbered along bottom; archival material  
throughout; unframed  
Reference: *MSBP #57*, one colour, edition: 100;  
*illustrated The New Trail*, University of  
Alberta, 1944  
Provenance: private collection, Calgary  
Estimate: 300/400

**208 ALBERTA DUSTBOWL #23/50**  
linoblock on paper  
5.5 x 10. in. | 14. x 25. cm. 1949  
signed and dated in block lower right; signed,  
titled, dated and numbered along bottom;  
archival material throughout  
Reference: *MSBP #121*, one colour, edition: 100;  
print tipped in to *Highlights*, ASA magazine,  
September 1949  
Provenance: private collection, Calgary  
Estimate: 300/400

**209 BARN AT LOMOND #31/50**  
woodblock on paper  
5. x 7.5 in. | 13. x 19. cm. 1974  
signed in block lower right; signed, titled, dated  
and numbered along bottom; archival mat  
front and back  
Reference: *MSBP #52*, one colour, block  
originally cut 1941, edition: 100; *illustrated in*  
*The New Trail*, University of Alberta, 1944  
Provenance: private collection, Calgary  
Estimate: 300/400



M. Shelton

Lot 206

**CAROLE BONDAROFF**

A.S.A.  
[b.1952] Canadian  
see *Printmaking in Alberta 1945-1985*, by  
B.Cochran, pg.62 for biography and other  
examples of the artist's work

**210 MONUMENT URUGSON #6/35**  
coloured etching on paper  
6. x 9. in. | 15. x 23. cm. 1988  
signed, titled, dated and numbered along  
bottom; unframed

**TOGETHER WITH**  
**SUNSHINE NEIGHBOURS #6/35**  
coloured etching on paper  
6. x 9. in. | 15. x 23. cm. 1988  
signed, titled, dated and numbered along  
bottom; unframed

**TOGETHER WITH**  
**STAN PHELPS**  
[b.1949] Canadian  
see *Spaces and Places*, by J.Ironside, pg.64 for  
biography and another example of the artist's work  
in the collection of the Alberta Art Foundation

**MOONLIGHT VISITOR TO RAUL'S GARDEN**  
#6/35  
coloured etching on paper  
6. x 9. in. | 15. x 23. cm. 1988  
signed, titled, dated and numbered along  
bottom; unframed

**TOGETHER WITH**  
**TWELVE STANDING IN JUDGEMENT #6/35**  
coloured etching on paper  
6. x 9. in. | 15. x 23. cm. 1988  
signed, titled, dated and numbered along  
bottom; unframed

Provenance: private collection, Calgary  
Reference: portfolio of 4 etchings by Carole  
Bondaroff and Stan Phelps from their trip to  
Mexico in 1988

**LOT OF 4** Estimate: 300/500

**JOHN SNOW**

A.S.A., C.S.G.A., R.C.A.  
[b.1911] Canadian  
see *John Snow: Four Decades*, by M.Joslin,  
Edmonton Art Gallery, 1990 and *Founders of*  
*the Alberta College of Art*, by V.Greenfield,  
pg.101 and pg.65; and *Printmaking in Alberta*  
1945-1985, by B.Cochran, pg.137 for biography  
and other examples of the artist's work

**211 RACHEL #3/21**  
lithograph on paper  
18. x 14. in. | 46. x 36. cm.  
signed, titled and number along bottom  
Provenance: Winnipeg Art Gallery, Art Rental  
label verso; estate, private collection, Winnipeg  
Estimate: 150/250

**212 STILL LIFE WITH PEAR #4/20**  
lithograph on paper  
15.75 x 19.75 in. | 40. x 50. cm.  
signed, titled and number along bottom  
Provenance: Canadian Art Galleries, Calgary  
label verso; private collection, Vancouver  
Estimate: 150/250

**OROVIDA PISSARRO**

[1893-1968] British  
see *Dictionary of British Artists 1880-1940*, by  
J.Johnson, pg.404 for biography; father was  
Lucien, grandfather was Camille Pissarro; see  
*British Etchers 1850-1940*, by K.Guichard, pg.55  
for biography

**213 MAN & BEAST #STATE 2 2/8**  
etching on paper  
10.5 x 8.5 in. | 27. x 22. cm. 1924  
signed, titled, dated and numbered below image;  
unframed  
Estimate: 200/400

**214 FEAR - STATE 1 NO.1/4 AND TRIAL**  
**PROOF NO.7**  
etching on paper  
7. x 4.75 in. | 18. x 12. cm. 1917  
signed, titled, dated and numbered below image;  
one copy inscribed 'To C.A.'; unframed  
**LOT OF 2** Estimate: 200/400

**ELYSE LORD**

[fl.1915-39] British  
see *Dictionary of British Artists 1880-1940*, by  
J.Johnson, pg.318 and *British Etchers 1850-1940*,  
by K.Guichard, pg.48 for biography

**215 PETITION #31/75**  
hand coloured etching on paper  
18.5 x 14.25 in. | 47. x 36. cm.  
signed, titled and numbered along bottom; tape  
stains in margin; unframed  
Estimate: 400/600

**JOSEPHINE HARRISON**

[fl.1931] British  
see *Dictionary of British Artists 1880-1940*, by  
J.Johnson, pg.232, exhibited Redfern Gallery, 1931

**216 CORCORADO - RIO #7/25**  
wood engraving on paper  
4. x 5.5 in. | 10. x 14. cm. 1934  
signed, titled, dated and numbered below image;  
unframed

**TOGETHER WITH**  
**UNTITLED - COASTAL LANDSCAPE #13/25**  
wood engraving on paper  
3. x 5.25 in. | 8. x 13. cm.  
signed and numbered below image; unframed

**TOGETHER WITH**  
**UNTITLED - HILLY LANDSCAPE #17/30**  
wood engraving on paper  
1.75 x 2.75 in. | 4. x 7. cm.  
signed and numbered below image; slight stain,  
tipped on around edges; unframed

**LOT OF 3** Estimate: 400/500

**217 UNTITLED - FIGURE WITH DEER**  
linoblock on paper  
7.5 x 6. in. | 19. x 15. cm.  
signed; unframed  
**TOGETHER WITH**  
**UNTITLED - SHIP**  
linoblock on paper  
7.5 x 6.5 in. | 19. x 17. cm.  
signed; unframed  
**LOT OF 2** Estimate: 300/400





E. Daghli

Lot 218

**ERIC FITCH DAGHLI**

[b.1894]

British

see *Dictionary of British Artists 1880-1940*, by J.Johnson, pg.133 for biography

**218 PHEASANTS**

wood engraving on paper

7. x 4.25 in. | 18. x 11. cm.

1928

signed below image; unframed

Reference: proof impression for the book *Game Birds* by Douglas Dewar, London, 1928 – from a group of only 15 to 20 proofs illustrated

Estimate: 250/350

**219 GREAT SNIPE**

wood engraving on paper

4.25 x 6.75 in. | 11. x 17. cm.

1928

signed below image; unframed

Reference: proof impression for the book *Game Birds* by Douglas Dewar, London, 1928 – from a group of only 15 to 20 proofs

Estimate: 250/350

**220 REED BUNTING**

wood engraving on paper

5.75 x 3.75 in. | 15. x 10. cm.

signed and titled below image; unframed

**TOGETHER WITH THE LOCUST**

wood engraving on paper

4.25 x 3.5 in. | 11. x 9. cm.

signed and titled below image; unframed

**LOT OF 2**

Estimate: 200/400

**221 MOONLIGHT ON THE CASSLEY**

wood engraving on paper

5. x 3.75 in. | 13. x 10. cm.

signed and titled below image; unframed

**TOGETHER WITH DESIGN**

wood engraving on paper

5.25 x 4. in. | 13. x 10. cm.

signed and titled below image; unframed

**LOT OF 2**

Estimate: 200/400

**CYRIL EDWARD POWER**

[1874-1951]

British

see *Dictionary of British Artists 1880-1940*, by J.Johnson, pg.409 for biography; and *Sybil Andrews, Colour Linocuts*, by P.White, pg.83, Glenbow Museum as well as S.Andrews quote 'Those to whom I am most indebted would be first of all Cyril E. Power . . .', pg.73

**222 THE HOG AND PARTRIDGE, DURY, ST. EDMUNDS #31/166**

etching on paper

6. x 9. in. | 15. x 23. cm.

signed, titled and numbered along bottom;

tipped on around edges; unframed

Reference: Cyril Power along with Claude Flight, Sybil Andrews, whom he shared a studio, and Iain McNab started up the Grosvenor School of Modern Art in 1925 – this print probably pre-dates this time period

Provenance: private collection, Vancouver

Estimate: 600/800

**FRANK BRANGWYNN**

R.A., R.E.

[1867-1956]

British

see *Dictionary of British Artists 1880-1940*, by J.Johnson, pg.73 and *British Etchers 1850-1940*, by K.Guichard, pg.28 for biography

**223 UNTITLED – NOCTURN NO.17**

coloured woodblock on paper

13.25 x 20. in. | 34. x 51. cm.

signed by Frank Brangwynn and Yoshijiro

Urushibara and numbered along bottom; oriental chop lower left; tipped on around edge to mat

Reference: Michael Gribbon in *Walter J. Phillips – A Selection of His Works and Thoughts*, pg.37-44, mentions Yoshijiro Urushibara's important influence on the colour woodblock revival

Provenance: Broadway Art Shop, Vancouver, label verso; private collection, Victoria

illustrated

Estimate: 2,000/2,500

**SYBIL ANDREWS**

C.P.E.

[b.1898]

Canadian

see *Sybil Andrews, Colour Linocuts*, by P.White, Glenbow Museum, 1982 as well as *Dictionary of British Artists 1880-1940*, by J.Johnson, pg.27 for biography



F. Brangwynn

Lot 223



S. Andrews

Lot 224

**224 PETER #1/25**

coloured linoblock on paper

11.5 x 5.5 in. | 29. x 14. cm.

1966

signed, titled and numbered in image lower right; archival material throughout

Reference: catalogue #60 in *Sybil Andrews – Colour Linocuts*, by P.White

Provenance: Artefact Picture Framers, London, England label verso; private collection, London

illustrated

Estimate: 1,000/1,500

**225 JOSEPH AND NICODEMUS #7/60**

coloured linoblock on paper

10.75 x 7.25 in. | 27. x 18. cm.

1932

signed and numbered lower right; titled above mat; archival material throughout

Reference: catalogue #20 in *Sybil Andrews – Colour Linocuts*, by P.White

Provenance: Artefact Picture Framers, London, England label verso; private collection, London

Estimate: 1,000/1,500

**226 PIETA #18/60**

coloured linoblock on paper

10.75 x 7.25 in. | 27. x 18. cm.

1932

signed, titled and numbered upper right; archival material throughout

Reference: catalogue #23 in *Sybil Andrews – Colour Linocuts*, by P.White

Provenance: private collection, London

Estimate: 1,000/1,500



SYBIL ANDREWS - Continued

**227 MOTHER AND SON #26/60**  
coloured linoblock on paper  
11. x 5.5 in. | 28. x 14. cm. 1932  
signed and numbered upper right; inscribed  
below mat 'Stond wel Moder unter Rode';  
archival material throughout  
Reference: catalogue #22 in *Sybil Andrews -  
Colour Linocuts*, by P.White  
Provenance: private collection, London  
*illustrated* Estimate: 1,000/1,500

**228 VIA DOLOROSA #3/60**  
coloured linoblock on paper  
8.25 x 9.75 in. | 21. x 25. cm. 1935  
signed, titled and numbered upper right  
Reference: catalogue #35 in *Sybil Andrews -  
Colour Linocuts*, by P.White in edition of 60  
as well as #68 titled 'Jesus Meets His Mother -  
Station IV', edition of 60, 1965  
Provenance: private collection, London  
Estimate: 1,000/1,500

**WALTER JOSEPH PHILLIPS**

A.S.A., C.S.P.W.C., R.C.A.  
[1884-1963] Canadian  
see *Walter J. Phillips*, by D.Scott, (*Scott #'s*)  
Ryerson Press, 1947; *Walter J. Phillips, A  
Selection of His Works and Thoughts*, by  
M.Gribbon, National Gallery of Canada, 1978;  
*The Tranquility and the Turbulence: The Life  
and Works of Walter J. Phillips*, by R.Boulet,  
(*MBL #'s*) Loates Publishing, 1981

**229 BEAVERLODGE**  
coloured woodblock on paper  
7.25 x 14.5 in. | 18. x 37. cm. 1944  
initialed in block lower right; signed and titled  
along bottom;  
archival material throughout  
Reference: *HBC CW#136; MBL #237* edition: 200  
Provenance: purchased from the estate;  
Kensington Fine Art Gallery, Calgary, label  
verso; private collection, Calgary  
*Illustrated on cover* Estimate: 2,200/2,800

**230 WEST ROAD (MOUNTAIN ROAD)**  
coloured woodblock on paper  
9. x 13. in. | 23. x 33. cm. 1942  
signed and titled along bottom; small cut into  
image left edge and small rip in margin above mat  
Reference: *Scott CW#130; MBL #230* edition:  
100; his notebooks record that in 21 days he  
was able to produce 50 prints  
Provenance: private collection, Calgary  
Estimate: 1,800/2,200

**231 THE DIVING BOARD #144**  
coloured woodblock on paper  
8.75 x 5.5 in. | 22. x 14. cm. 1930  
initialed in block; signed and numbered along  
bottom; some yellowing; archival material  
throughout  
Reference: *Scott CW#106*, edition: 250;  
*MBL#131*, edition: unknown; included in *Ten  
Woodcut\_folio* of 1931  
Provenance: private collection, Calgary  
*Illustrated in brochure* Estimate: 1,000/1,200



W.J. Phillips

Lot 233

**232 LAKE MACARTHUR, CANADIAN  
ROCKIES #144**  
coloured woodblock on paper  
7.5 x 9.25 in. | 19. x 23. cm. 1931  
initialed in block; signed and numbered along  
bottom; some yellowing; archival material  
throughout  
Reference: *Scott CW#102*, edition: 250;  
*MBL#151*, edition: 200; included in *Ten  
Woodcut folio* of 1931; *illustrated  
Printmaking in Alberta 1945-1985*, by  
B.Cochran, pg.21  
Provenance: private collection, Calgary  
Estimate: 800/1,200

**233 WATER LILIES**  
coloured woodblock on paper  
4.25 x 6.25 in. | 11. x 16. cm. 1927  
monogram in block upper left; signed and  
inscribed along bottom; archival mat front and  
back  
Reference: *Scott CW#70* edition: 200; *MBL#105*  
edition: 250; included in *Ten Canadian Colour  
Prints folio* of 1927 - 'Wood-grain prints are  
often useful ... Water-lilies gives pertinent  
variety to the water ...' W.J.Phillips, pg.10  
*Illustrated in brochure* Estimate: 800/1,000

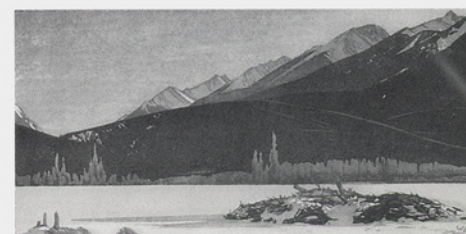
**234 SMOKE HAZE, LAKE OF THE WOODS**  
coloured woodblock on paper  
5.75 x 8.75 in. | 15. x 22. cm. 1935  
signed lower right; small crease upper right;  
some yellowing; archival material throughout  
Reference: *Scott CW#118; MBL#212*, edition:  
200; included in *Winter Woodcuts folio* of  
1936 in edition of 100  
Provenance: private collection, Calgary  
Estimate: 700/900

**235 FALL, ASSINIBOINE RIVER #144**  
coloured woodblock on paper  
7. x 10. in. | 18. x 25. cm. 1931

signed in block; signed and numbered along  
bottom; some yellowing; archival material  
throughout  
Reference: *Scott CW#107*, edition: 250; *MBL#150*,  
edition: 200; included in *Ten Woodcuts folio* of  
1931  
Provenance: private collection, Calgary  
Estimate: 700/900

**236 CINERARIA #12**  
woodblock on paper  
6.75 x 8.25 in. | 17. x 21. cm. 1928  
signed and numbered below image  
Reference: *Scott CW#81*, edition: 250;  
*MBL#117*, edition: 300; included in *The  
Canadian Scene folio* of 1928 in edition of  
100; three blocks  
Estimate: 700/900

**237 CATHCART'S ISLAND, MUSKOKA #60**  
coloured woodblock on paper  
6.5 x 7.25 in. | 17. x 18. cm. 1927  
initialed in block lower left; signed and  
numbered along bottom; titled on label verso;  
archival mats front and back  
Reference: *Scott CW#65*, edition: 200; *MBL#100*  
edition: 250; included in *Ten Canadian  
Colour Prints folio* of 1927  
Provenance: Emmetts Framing, Toronto, label  
verso  
Estimate: 700/900



W.J. Phillips

Lot 229



**238 WINTER SUNSHINE**  
coloured woodblock on paper  
4.25 x 4 in. | 11. x 10. cm. 1919  
monogram in block lower right; signed along  
bottom; archival material throughout  
Reference: *Scott CW#18.5; MBL#50B* edition:  
unknown; Christmas card for 1919; two  
blocks; included in *Winter Woodcuts* folio of  
1936 in edition of 100  
Provenance: Kensington Downtown Fine Art  
Gallery, Calgary, label verso  
Estimate: 500/700

**239 LITTLE LOG HOUSE**  
coloured woodblock on paper  
3.25 x 3.5 in. | 8. x 9. cm. 1926  
monogram and date in block upper right; signed  
along bottom; titled attached verso  
Reference: *Scott CW#58; MBL#92* edition:  
unknown; Christmas card for 1926; included in  
*Winter Woodcuts* folio of 1936 in edition of 100  
Provenance: Canadiana House, Calgary, label  
verso  
Estimate: 300/500

**240 SNOW BANK**  
coloured woodblock on paper  
4.25 x 3.75 in. | 11. x 10. cm. 1923  
monogram in block lower right; signed along  
bottom; titled on label verso  
Reference: *Scott CW#41; MBL#74* edition:  
unknown; Christmas card for 1923; included in  
*Winter Woodcuts* folio of 1936 in edition of 100  
Provenance: Canadiana House, Calgary label  
verso  
Estimate: 300/500

**241 DEER ON HILLSIDE**  
coloured woodblock on paper  
3.5 x 4.75 in. | 9. x 12. cm. 1948  
signed along bottom; archival material  
throughout  
Reference: *HBC CW#141; MBL#243*  
edition:200/300; Christmas card for 1948  
Estimate: 300/500

**242 THE STREAM IN WINTER (OPEN WATER)**  
coloured woodblock on paper  
4.25 x 4.5 in. | 11. x 11. cm. 1935  
monogram in block lower right; signed along  
bottom  
Reference: *Scott CW#119; MBL#213* edition:  
unknown; Christmas card for 1935; included in  
*Winter Woodcuts* folio of 1936 in edition of 100  
Provenance: Canadiana House, Calgary, label  
verso  
Estimate: 300/500

**243 LAC LU**  
wood engraving on paper  
4.5 x 4.75 in. | 11. x 12. cm. 1933  
labeled below image  
Reference: *Scott WE#49; MBL #192* edition:  
unknown; *Royal Canadian Academy of the  
Arts, Exhibitions and Members 1880-1979*, by  
R.McMann lists the watercolour of this  
exhibited in 1932  
Provenance: private collection, Calgary  
Estimate: 200/300

**HAROLD NELSON SEMMENS**  
[b.1914] Canadian  
**244 UNTITLED -YORK BOATS**  
watercolour on paper  
16.5 x 20.5 in. | 42. x 52. cm. 1938  
signed and dated lower right; unframed  
Provenance: private collection, Vancouver  
Estimate: 500/700

**DAVID LLOYD BLACKWOOD**  
O.S.A., R.C.A.  
[b.1941] Canadian  
see *David Blackwood Prints 1962-1984*, by  
P.Grattan, Art Gallery, Memorial University of  
Newfoundland; and *The Art of David  
Blackwood*, by W.Gough, McGraw Hill  
Ryerson, 1988

**245 FORTRESS OF LOUISBOURG, CAPE  
BRETON #32/35**  
coloured etching on paper  
19.75 x 31.5 in. | 50. x 80. cm. 1973  
signed, titled, dated and numbered along  
bottom; archival mat  
Estimate: 1,500/1,800

**246 MOLLY GLOVER LEAVING BRAGG'S  
ISLAND**  
coloured etching on paper  
12. x 16. in. | 30. x 41. cm. 1985  
signed, titled, dated and numbered along  
bottom; archival mat  
Reference: illustrated *The Art of David  
Blackwood*, by W.Gough, plate 20  
Estimate: 1,500/1,800

**VELMA FOSTER**  
A.S.A.  
[b.1938] Canadian  
see *Alberta Art, Works from the Alberta Art  
Foundation*, by L.Schmidt; and *Printmaking in  
Alberta 1945-1985*, by B.Cochran, pg.72 for  
biography and other examples of the artist's  
work

**247 DECEMBER FROSTY MORNING /  
WINTER'S FIRST SNOW / CARAGANAS IN  
THE SNOW #15/25**  
etching on paper  
11. x 14. in. | 28. x 36. cm.  
all signed, titled and numbered along bottom;  
unframed  
Provenance: private collection, Calgary  
**LOT OF 3** Estimate: 300/400

**JACK L. COWIN**  
[b.1947] Canadian  
see *Country Pleasures, The Angling Art of Jack  
Cowin*, by A.Oko, Fifth House, 1984

**248 BIG HORN BOW (WESTERN TROUT  
SERIES) #3/25 (UNIQUE)**  
hand coloured etching on paper  
10.5 x 23.75 in. | 27. x 60. cm. 1983  
signed, titled, dated and numbered along  
bottom; fly attached to print lower right;  
paper size: 22.25 x 28.25

Reference: pencil study for Big Horn Bow  
illustrated in *Country Pleasures - The Angling  
Art of Jack Cowin*, by A.Oko, pg. 16; image  
included in *Catch and Release*, Dunlop Art  
Gallery show, Regina, 1986  
Estimate: 600/800

**249 RISING BROWN #118/300**  
lithograph on paper  
18.5 x 24.5 in. | 47. x 62. cm. 1983  
signed, titled, dated and numbered along  
bottom; unframed  
Estimate: 200/400

**WYNONA CROFT MULCASTER**  
[b.1915] Canadian  
see *Wynona Mulcaster: A Survey*, by  
G.Moppett, Mendel Art Gallery, 1984;  
biography in *Dictionary of Canadian Artists*, by  
C.MacDonald, Vol.4 pg.1332; and *Mountains  
and the Sky*, L.Render, for other examples in the  
collection of the Glenbow

**250 UNTITLED - STUDIO PORTRAIT**  
oil on board  
16. x 12. in. | 41. x 30. cm. 1955  
signed lower left; bears date on label verso  
Reference: see *The Mountains and the Sky* by  
L.Render, pg.209 for other examples of artists  
work in the collection of the Glenbow  
Provenance: James Studio, Saskatoon, label  
verso; private collection, Montreal  
Estimate: 500/700

**ROBERT NEWTON HURLEY**  
[1894-1980] Canadian  
see *Robert Newton Hurley, A Notebook*, by  
G.Moppett, Mendel Art Gallery, 1986 and *Sky  
Painter; the Story of Robert Newton Hurley* by  
J.Swanson, Western Producer Book Service,  
1973

**251 UNTITLED - B.C. LIGHTHOUSE**  
watercolour on illustration board  
13. x 16.5 in. | 33. x 42. cm. 1971  
signed and dated lower left; archival mat  
Reference: possibly the Fisgard Lighthouse at  
Esquimalt Harbour, a favourite landscape  
subject as noted in *Robert Newton Hurley - A  
Notebook*, by George Moppett  
Provenance: Art Placement, Saskatoon, label  
verso  
Estimate: 500/700

**252 UNTITLED - NOCTURNE**  
mixed media on paper  
13.25 x 14.25 in. | 34. x 36. cm. 1974  
signed and dated lower right  
Provenance: private collection, Victoria  
Estimate: 400/600





D. Knowles Lot 253

**DOROTHY KNOWLES**

[b.1927] Canadian  
see *Dorothy Knowles Paintings, 1964-1982*, by T.Fenton, Edmonton Art Gallery, 1983

**253 SUMMERFALLOW**

oil on linen  
12. x 18. in. | 30. x 46. cm. 1985  
signed, titled and dated verso  
*illustrated* Estimate: 1,800/2,200

**254 DENSE BLUE SHADOW**

watercolour on paper  
22.5 x 30.25 in. | 57. x 77. cm. 1977  
signed lower right; signed, titled and dated verso; archival mat  
Provenance: Canadian Art Galleries, Calgary, label verso  
Estimate: 1,500/2,000

**CATHERINE PEREHUDOFF**

[b.1958] Canadian  
see *Watercolour Painting in Saskatchewan 1905-1980*, by R.Christie pg.41 for biography

**255 UNTITLED**

watercolour on paper  
22. x 29.25 in. | 56. x 74. cm. 1980  
signed and dated lower right  
Provenance: The Art Gallery, Calgary, stamp verso; private collection, Calgary  
Estimate: 400/600



N. Morrisseau Lot 259

**KEITH HOLMES**

[b.1946] Canadian

**256 STILL LIFE WITH GREEN APPLE**

acrylic on canvas  
20. x 16. in. | 51. x 41. cm. 1984  
signed lower right; titled and dated verso  
Provenance: Kensington Downtown Fine Art Gallery, Calgary, label verso; private collection, Calgary  
Estimate: 300/500

**TONY ALLISON**

[b.1946] Canadian

**257 ALBERTA BLUE HILLS**

oil and acrylic on canvas  
30. x 29.75 in. | 76. x 76. cm. 1981  
signed and dated lower left; signed, titled and dated verso; repair noted  
Provenance: private collection, Calgary  
Estimate: 700/900

**JOANE CARDINAL-SCHUBERT**

A.S.A., R.C.A.  
[b.1942] Canadian

see *A Measure of Success: Graduates of the A.C.A 1963-1984*, by L.Greenwood, pg.110 for biography and another example of the artist's work

**258 EAST GATE SWEAT LODGE**

pastel and graphite on paper  
22.25 x 29.5 in. | 57. x 75. cm. 1979  
signed and dated lower right; archival mat front and back  
Provenance: Masters Gallery, Calgary label verso; private collection, Calgary  
Estimate: 800/1,000

**NORVAL MORRISSEAU**

R.C.A.  
[b.1931] Canadian  
biography in *Dictionary of Canadian Artists*, by C.MacDonald, Vol.4 pg.1302

**259 THE SHAMAN APPRENTICE**

acrylic on canvas  
24. x 18. in. | 61. x 46. cm.  
signed in syllabics lower right; titled verso  
Provenance: private collection, Victoria  
*illustrated* Estimate: 1,500/2,000

**HAROLD BARLING TOWN**

R.C.A.  
[1924-1991] Canadian  
see *Town*, by D.Burnett, Art Gallery of Ontario, 1986

**260 VALE VARIATION - PYRAMID OF ROSES**

rubber resist, poster paint, ink on paper  
19.5 x 25.75 in. | 50. x 65. cm. 1975  
signed and dated lower left; signed, titled, dated and inscribed verso; archival material throughout  
Reference: see *Town*, by D.Burnett, pg.167-175, for discussion of this time period in the artist's career  
Provenance: Masters Gallery, Calgary, label verso  
*illustrated* Estimate: 2,000/2,500



H. Town Lot 260

**FRANK LEONARD BROOKS**

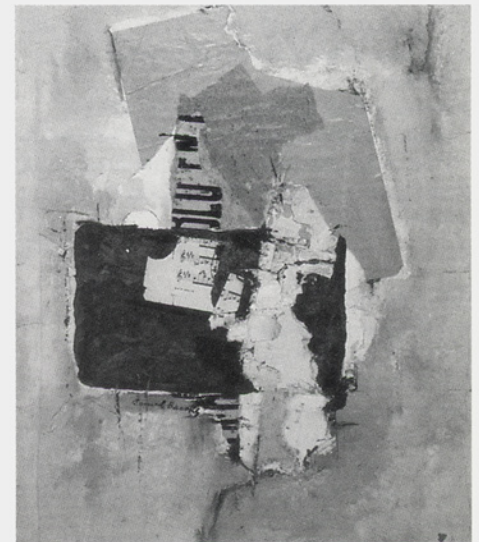
C.P.E., O.S.A., R.C.A.  
[b.1911] Canadian  
see *Leonard Brooks, 1950-1984*, by the Canadian Embassy for Mexico, 1984; Leonard has lived at the San Miguel de Allende's Art School since 1947; biography in *Dictionary of Canadian Artists*, by C.MacDonald, Vol.1 pg.91

**261 MOOD MUSICAL**

mixed media on board  
22.5 x 18.75 in. | 57. x 48. cm.  
signed lower left; titled verso  
Provenance: private collection, Calgary  
*illustrated* Estimate: 800/1,200

**262 ISLE OF THE GODS, DELOS, GREECE '67**

ink on paper  
19. x 24.5 in. | 48. x 62. cm. 1967  
titled and dated lower right, signed along bottom; archival material throughout  
Estimate: 200/400



L. Brooks Lot 261



## ILLINGWORTH HOLEY KERR

A.S.A., R.C.A.

[1905-1988]

Canadian

see *Harvest of the Spirit*, by M.Callahan, Edmonton Art Gallery, 1985 and *Paint and Circumstance*, by I.Kerr, Calgary, 1987 and *Founders of the Alberta College of Art*, by V.Greenfield, pg.87 for biography and other examples

### 263 WILLOW CREEK, SPRING

oil on canvas

33.75 x 50. in. | 86. x 127. cm.

signed with monogram lower right; signed titled and dated on stretcher

*illustrated on cover* Estimate: 6,000/8,000

### 264 HAYLAND SOUTHWEST OF CALGARY

oil on canvas board

18. x 24. in. | 46. x 61. cm.

1976

signed with monogram lower right; signed, titled and dated verso

Provenance: purchased from artist; private collection, Calgary

*illustrated* Estimate: 2,500/3,500

### 265 ECHO LAKE, EVENING, QU'APPELLE, SASK.

oil on board

16. x 19.75 in. | 41. x 50. cm.

1975

signed with monogram lower left; signed, titled and dated verso

Provenance: private collection, Calgary/Edmonton  
*illustrated in brochure* Estimate: 2,500/3,000

### 266 ECHO LAKE, QU'APPELLE VALLEY

oil on canvas board

16. x 20. in. | 41. x 51. cm.

circa 1975

signed with monogram lower centre; signed and titled verso

Provenance: private collection, Calgary/Edmonton  
*illustrated* Estimate: 2,500/3,000

### 267 RAIN, DOGTOOTH LAKE, ONTARIO

oil on board

12. x 15.75 in. | 30. x 40. cm.

circa 1975

signed with monogram lower left; signed and titled verso

Provenance: private collection, Edmonton  
*illustrated* Estimate: 2,000/2,500

### 268 FROM MY WINDOW #A.P.

linoblock on paper

9. x 6.5 in. | 23. x 17. cm.

initialed in block lower right; signed, titled and numbered along bottom

Provenance: Artnest Gallery, Calgary, label verso

Estimate: 150/250

### 269 SPIKER #43/100

woodblock on paper

9. x 5. in. | 23. x 13. cm.

signed, titled and numbered along bottom; archival mat front and back

Provenance: private collection, Calgary

Estimate: 150/250



I. Kerr

Lot 263



I. Kerr

Lot 264



I. Kerr

Lot 265

## BRIAN CHUBB

[b.1947]

Canadian

see *Spaces and Places*, by J.Ironside, pg.74 for biography and another example of the artist's work in the collection of the Alberta Art Foundation

### 270 PINK, BLUE AND YELLOW

oil on canvas

22. x 26. in. | 56. x 66. cm.

signed lower left; titled on stretcher verso

Estimate: 600/800

### 271 UNTITLED LANDSCAPE

oil on board

16. x 20. in. | 41. x 51. cm.

signed lower right

Estimate: 400/600

## JOHN KAUFMAN

[b.1947]

Canadian

### 272 TREES BY RIVER

oil on board

12. x 17. in. | 30. x 43. cm.

1989

signed, titled and dated verso

Estimate: 300/400

### 273 UNTITLED LANDSCAPE

oil on board

7.75 x 16. in. | 20. x 41. cm.

1989

signed and dated verso

Estimate: 200/300



I. Kerr

Lot 266



I. Kerr

Lot 267





L. Underwood

Lot 275

**WILLIAM NICHOLSON**

[1872-1949] British  
see *Dictionary of British Artists 1880-1940*, by J.Johnson, pg.376 for biography; father of Ben Nicholson; and *A History of Wood Engraving*, by A.Garrett, pg.391

**274 THE ARCHBISHOP OF CANTERBURY**

coloured woodblock on paper  
10. x 9. in. | 25. x 23. cm.  
signed and titled in block; unframed  
Reference: see two other examples in *Modern Woodcuts and Lithographs - Studio 1919*, pg.41,42

Estimate: 100/150

**LEON UNDERWOOD**

[1890-1975] British  
see *Dictionary of British Artists 1880-1940*, by J.Johnson, pg.513 for biography, wrote and illustrated *The Siamese Cat*, 1927; see *A History of Wood Engraving*, by A.Garrett, pg.398

**275 IF I HAD A SHILLIN' #3/50**

woodblock on paper  
5.25 x 3. in. | 13. x 8. cm. 1928  
signed, titled, dated and numbered below image;  
unframed  
*illustrated*

**TOGETHER WITH**

**UNTITLED - MEN FIGHTING #2/50**

woodblock on paper  
5.5 x 3.25 in. | 14. x 8. cm. 1928  
signed, dated and numbered below image;  
unframed

LOT OF 2 Estimate: 300/500

**276 UNTITLED - CAT ON FLOOR #4/50**

woodblock on paper  
5.5 x 3.25 in. | 14. x 8. cm. 1928  
signed, dated and numbered below image;  
unframed

**TOGETHER WITH**

**UNTITLED - MAN WITH KNIFE #3/50**

woodblock on paper  
5.25 x 3. in. | 13. x 8. cm. 1928  
signed, dated and numbered below image;  
unframed

LOT OF 2 Estimate: 300/500

**277 UNTITLED - WOMAN WITH CAT #4/50**

woodblock on paper  
5.5 x 3.25 in. | 14. x 8. cm. 1928  
signed, dated and numbered below image;  
unframed

**TOGETHER WITH**

**THE INVENTOR #3/50**

woodblock on paper  
3. x 5.25 in. | 8. x 13. cm. 1928  
signed, titled, dated and numbered below image;  
unframed

LOT OF 2 Estimate: 300/500

**278 UNTITLED - DRUNKEN SAILORS #3/50**

woodblock on paper  
3.25 x 5.5 in. | 8. x 14. cm. 1928  
signed, dated and numbered below image;  
unframed

**TOGETHER WITH**

**UNTITLED - MEN AND CAT ON BOAT #3/50**

woodblock on paper  
5.25 x 3. in. | 13. x 8. cm. 1928  
signed, dated and numbered below image;  
unframed

LOT OF 2 Estimate: 300/500

**279 UNTITLED - MAN WITH CRAB #3/50**

woodblock on paper  
5.25 x 3. in. | 13. x 8. cm. 1928  
signed, dated and numbered below image;  
unframed

**TOGETHER WITH**

**UNTITLED - CATS IN SEMI-CIRCLE #5/50**

woodblock on paper  
3.25 x 5.25 in. | 8. x 13. cm. 1928  
signed, dated and numbered below image;  
unframed

LOT OF 2 Estimate: 300/500

**GUY SEYMOUR WARRE MALET**

R.B.A. British  
[1900-1973]  
see *Dictionary of British Artists 1880-1940*, by J.Johnson, pg.337 for biography; and *A History of Wood Engraving*, by A.Garrett, pg.387; studied under Macnab at the Grosvenor School

**280 DEUTSCHES MUSEUM, MUNICH #6/30**

wood engraving on paper  
6. x 5.75 in. | 15. x 15. cm.  
titled in block; signed, titled and numbered  
along bottom; unframed

Estimate: 200/300

**ARCHIBALD STANDISH HARTRICK**

[1864-1950] British  
see *Dictionary of British Artists 1880-1940*, by J.Johnson, pg.233 and *British Etchers 1850-1940*, by K.Guichard, pg.42 for biography

**281 UNTITLED - PORTRAIT OF A WOMAN**

lithograph on paper  
17.5 x 10.5 in. | 44. x 27. cm. circa 1910  
signed below image and numbered 49 from an  
edition of about 50; also bears inscription in  
another hand; unframed

Reference: see another example of the artist's  
work in *Modern Woodcuts and Lithography -  
Studio, 1919*, pg.139

Estimate: 200/300

**GEORGE PERCIVAL GASKELL**

R.E. British  
[1868-1934]  
see *Dictionary of British Artists 1880-1940*, by J.Johnson, pg.194 and *British Etchers 1850-1940*, by K.Guichard, pg.39 for biography

**282 THE APPROACHING STORM**

etching on paper  
7.5 x 10.75 in. | 19. x 27. cm.  
signed below image; stamp 'K&G' verso;  
unframed

Reference: illustrated in *British Etchers 1850-  
1940*, by K.Guichard, plate 25

Estimate: 200/400

**283 UNTITLED - LANDSCAPE WITH BRIDGE**

etching on paper  
4.75 x 6.75 in. | 12. x 17. cm.  
signed below image; unframed

**TOGETHER WITH**

**UNTITLED - LADIES SEWING**

etching on paper  
9.5 x 6.75 in. | 24. x 17. cm.  
signed in plate; signed below image; unframed

LOT OF 2 Estimate: 300/500

**FRANCIS DODD**

R.A. British  
[1874-1949]  
see *Dictionary of British Artists 1880-1940*, by J.Johnson, pg.150 and *British Etchers 1850-1940*, by K.Guichard, pg.36 for biography

**284 UNTITLED - LADIES PLAYING CARDS**

etching on paper  
10.5 x 12. in. | 27. x 30. cm.  
signed below image; stamp 'K&G' verso;  
unframed

**TOGETHER WITH**

**UNTITLED - ALPINE VILLAGE**

etching on paper  
6.25 x 8. in. | 16. x 20. cm.  
signed below image; stamp 'K&G' verso; slight  
foxing; unframed

LOT OF 2 Estimate: 400/500



**MALCOLM OSBORNE**

R.A., R.E.

[b.1880]

British

see *Dictionary of British Artists 1880-1940*, by J. Johnson, pg.385 and *British Etchers 1850-1940*, by K. Guichard, pg.53 for biography

**285 THE PROBLEM – A.MASON**

etching on paper

11.25 x 10.5 in. | 29. x 27. cm.

circa 1909

signed below image; bears title on mat; unframed

Estimate: 350/450

**286 STRATHTAY**

etching on paper

6.5 x 14.5 in. | 17. x 37. cm.

signed below image; bears title; stamp 'K&G' verso; unframed

**TOGETHER WITH****ENGLISH SQUARE**

etching on paper

6.5 x 12.5 in. | 17. x 32. cm.

signed below image; bears title; stamp 'K&G' verso; unframed

**LOT OF 2**

Estimate: 300/500

**TOM MAXWELL**

[? -1937]

British

see *Dictionary of British Artists 1880-1940*, by J. Johnson, pg.347 and *British Etchers 1850-1940*, by K. Guichard, pg.50 for biography

**287 GILMOREHILL IN SNOW**

etching on paper

10. x 14. in. | 25. x 36. cm.

signed in plate; signed and titled along bottom; laid down around edges; unframed

**TOGETHER WITH****WILLIAM RENISON**

[fl.1893-38]

British

see *Dictionary of British Artists 1880-1940*, by J. Johnson, pg.423 and *British Etchers 1850-1940*, by K. Guichard, pg.55 for biography

**UNTITLED – LANDSCAPE #27/75**

etching on paper

9. x 13.75 in. | 23. x 35. cm.

signed and numbered along bottom; laid down around edges; small scuff in image; unframed

**LOT OF 2**

Estimate: 400/500

**[UNKNOWN] SIMPSON**

[20th century]

possibly British

**288 UNTITLED – PORTRAIT #3-75**

etching on paper

12. x 8.25 in. | 30. x 21. cm.

signed and numbered below image; unframed

Reference: possibly Joseph Simpson, see additional sheet

Estimate: 100/150

**GERALD LESLIE BROCKHURST**

R.A., R.E.

[1890-1978]

British

see *Dictionary of British Artists 1880-1940*, by J. Johnson, pg.77 and *British Etchers 1850-1940*, by K. Guichard, pg.29 for biography

**289 UNTITLED – PORTRAIT OF A LADY**

etching on paper

6.25 x 4.75 in. | 16. x 12. cm.

signed and inscribed 'To John' along bottom; tipped in along edges; unframed

Estimate: 400/600

**EDWARD FRANK GILLET**

[1874-1927]

British

see *Dictionary of British Artists 1880-1940*, by J. Johnson, pg.200 and *British Etchers 1850-1940*, by K. Guichard, pg.39 for biography

**290 THE TYCOON OR EXTRA TURN #39/75**

etching on paper

6.75 x 9.75 in. | 17. x 25. cm.

signed and numbered below image; bears title on mat; unframed

Reference: illustrated in *British Etchers 1850-1940*, by K. Guichard, plate 25, titled 'Extra Turn'

**TOGETHER WITH****THE MOLE CATCHER #16/75**

etching on paper

6.75 x 9.75 in. | 17. x 25. cm.

signed and numbered below image; bears title on mat; unframed

**LOT OF 2**

Estimate: 300/500

**WILLIAM PALMER ROBINS**

R.E.

[1892-1959]

British

see *Dictionary of British Artists 1880-1940*, by J. Johnson, pg.431 and *British Etchers 1850-1940*, by K. Guichard, pg.56 for biography

**291 NEAR WALBERSWICK, ENGLAND**

etching on paper

6.5 x 9.5 in. | 17. x 24. cm.

1925

signed and dated below image; bears title; stamp 'K&G' verso; unframed

Reference: illustrated in *British Etchers 1850-1940*, by K. Guichard, plate 56

Estimate: 200/400

**292 THE BROOK**

etching on paper

7. x 9. in. | 18. x 23. cm.

1914

signed and dated below image; bears title; stamp 'K&G' verso; unframed

**TOGETHER WITH****THE WALNUT TREE**

etching on paper

7.75 x 12. in. | 20. x 30. cm.

1920

signed in plate; signed and dated below image; bears title; stamp 'K&G' verso; unframed

**LOT OF 2**

Estimate: 300/500

**CHARLES HAZELWOOD SHANNON**

R.A., R.E.

[1863-1937]

British

see *Dictionary of British Artists 1880-1940*, by J. Johnson, pg.454 for biography and *A Dictionary of Wood Engraving*, by A. Garrett, pg.397

**293 AUTUMN**

lithograph on paper

18.75 x 12.75 in. | 48. x 32. cm.

1917

initialed and dated in plate lower left; signed and inscribed 'No.84' lower left; bears title along bottom; unframed

Reference: see other examples of the artist's work in *Modern Woodcuts and Lithographs – Studio, 1919*, pg.127 & 128

Provenance: private collection, Vancouver

Estimate: 400/600

**HENRY RUSHBURY**

R.A., R.E.

[1889-1968]

British

see *Dictionary of British Artists 1880-1940*, by J. Johnson, pg.440 and *British Etchers 1850-1940*, by K. Guichard, pg.57 for biography

**294 CANAL DE LA DOUANE, MARSEILLE**

etching on paper

8.5 x 9.25 in. | 22. x 23. cm.

1923

signed along bottom; titled and inscribed 'Publishers State 50 proofs' along bottom

*illustrated*

Estimate: 400/600

**295 PARIS**

etching on paper

9.25 x 12.5 in. | 23. x 32. cm.

signed and titled in plate; signed lower right; slight mark centre of sky; unframed

**TOGETHER WITH****UNTITLED – WHITEHALL**

etching on paper

8.5 x 10.75 in. | 22. x 27. cm.

signed; signed lower right; laid down on mat board; unframed

**LOT OF 2**

Estimate: 300/500



H. Rushbury

Lot 294



**WILFRED R.E. FAIRCLOUGH**

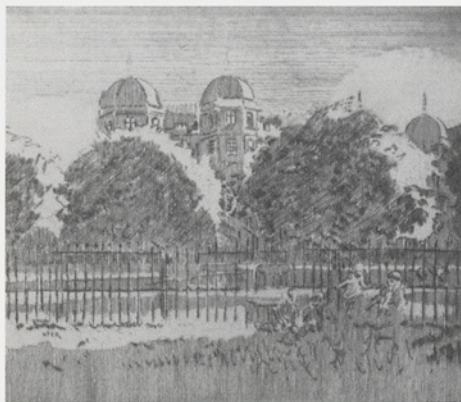
A.R.E.  
[b.1907] British  
see *Dictionary of British Artists 1880-1940*, by J.Johnson, pg.170 and *British Etchers 1850-1940*, by K.Guichard, pg.37 for biography

**296 UNTITLED – BEGGAR WITH SHOES**  
etching on paper  
6. x 4.75 in. | 15. x 12. cm. 1938  
initialed in block; signed and dated below image; unframed  
Reference: illustrated *British Prints – Dictionary and Price Guide* pg.117

**TOGETHER WITH**

**HENRY PERCY HUGGILL**

A.R.E.  
[1886-1957] British  
see *Dictionary of British Artists 1880-1940*, by J.Johnson, pg.262 for biography  
**UNTITLED – LIVERPOOL STREET SCENE**  
etching on paper  
10. x 7.75 in. | 25. x 20. cm. 1920  
inscribed in plate 'Published by The Gainsborough Galleries, Liverpool' signed lower right; unframed  
**LOT OF 2** Estimate: 300/500



W. Sickert Lot 297

**WALTER SICKERT**

R.A., R.E.  
[1860-1942] British  
see *Walter Sickert as Printmaker*, A.Troyen, Yale Center for British Art, 1979 for extensive biography and other examples, and *Dictionary of British Artists 1880-1940*, by J.Johnson, pg.459 and *British Etchers 1850-1940*, by K.Guichard, pg.58 for biography

**297 SUSSEX PLACE, REGENT'S PARK**  
etching on paper  
7. x 8.5 in. | 18. x 22. cm. 1920  
signed and dated in plate  
Reference: catalogue #108 in *Walter Sickert as Printmaker*, by A.Troyen, New Haven – final state with inscription along bottom of plate 'Published by Ernest Brown & Phillips at Leicester Galleries'  
*illustrated* Estimate: 400/600



E. Lumsden Lot 298

**ERNEST STEPHEN LUMSDEN**

R.E.  
[1883-1946] British  
see *Dictionary of British Artists 1880-1940*, by J.Johnson, pg.321 for biography and *Printmaking in British Columbia, 1889-1983*, by N.Tuel, for biography and another example; *British Etchers 1850-1940*, by K.Guichard, pg.48; husband of Mabel Royds

**298 JODHPUR, EVENING**  
etching on paper  
7. x 10.75 in. | 18. x 27. cm. 1914  
signed, dated and titled in plate; signed and titled along bottom; edition: 50 signed proofs; unframed  
Reference: this print is from his second trip to Jodhpur, in *The Etching Revival 1826-1936*, from *The Collections of the Art Gallery of Victoria / No.8*, there was another print dated 1927  
*illustrated* Estimate: 400/600

**299 A SPANISH ROAD #10/50**  
etching on paper  
10. x 11.75 in. | 25. x 30. cm. 1923  
signed and dated in plate lower right; signed and numbered along bottom; unframed  
Estimate: 400/600



E. Lumsden Lot 304

**300 AWNINGS AND UMBRELLAS – BENARES**  
etching on paper  
6. x 9.75 in. | 15. x 25. cm. 1914  
signed and dated in plate left edge; signed along bottom; edition: 50 signed proofs; unframed  
Reference: Benares, now called Varanasi, is in central India between Delhi and Calcutta on the Ganges River  
Estimate: 400/600

**301 A MODERN BETHESDA #44/50**  
etching on paper  
8.5 x 13.25 in. | 22. x 34. cm. 1923  
signed and dated in plate lower right; signed and numbered along bottom; unframed  
Estimate: 400/600

**302 THE ALCANTARA BRIDGE, TOLEDO**  
etching on paper  
8.5 x 13.25 in. | 22. x 34. cm. 1923  
signed and dated in plate; signed and inscribed '3.50' along bottom; bears title below mat; unframed  
Estimate: 400/600

**303 A TOLEDO INN #9.50**  
etching on paper  
11.75 x 6.25 in. | 30. x 16. cm. 1923  
signed and dated in plate; signed and numbered below image; titled on label verso; unframed  
Estimate: 400/600

**304 THE ENTHUSIAST**  
etching on paper  
6. x 12. in. | 15. x 30. cm. 1932  
signed and dated in plate; signed and inscribed '1.50' along bottom; bears title below mat; unframed  
*illustrated* Estimate: 400/600

**BARBARA LEIGHTON**

A.S.A., C.P.E.  
[1911-1986] Canadian  
see lot #54 as well as *Printmaking in Alberta 1945-1985*, by B.Cochran, pg.100; and see *Images of the Land, Canadian Block Prints 1919-1945*, by P.Ainslie, for biography and other examples of the artist's work

**305 LOBBY 1 #1/2**  
etching on paper  
10.75 x 9.5 in. | 27. x 24. cm.  
signed, titled and numbered below image; unframed  
Provenance: private collection, Southern Alberta

**TOGETHER WITH**

**LOBBY 4 #2/7**  
etching on paper  
11.75 x 8.75 in. | 30. x 22. cm.  
signed, titled and numbered below image; unframed  
Provenance: private collection, Southern Alberta  
**LOT OF 2** Estimate: 150/250



**WILFRED R.E. FAIRCLOUGH**

A.R.E.  
[b.1907] British  
see *Dictionary of British Artists 1880-1940*, by J.Johnson, pg.170 and *British Etchers 1850-1940*, by K.Guichard, pg.37 for biography

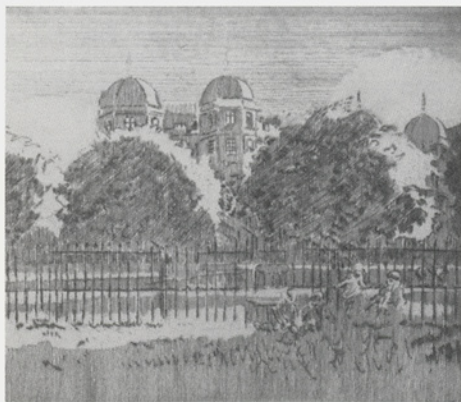
**296 UNTITLED – BEGGAR WITH SHOES**

etching on paper  
6. x 4.75 in. | 15. x 12. cm. 1938  
initialed in block; signed and dated below image; unframed  
Reference: illustrated *British Prints – Dictionary and Price Guide* pg.117

**TOGETHER WITH****HENRY PERCY HUGGILL**

A.R.E.  
[1886-1957] British  
see *Dictionary of British Artists 1880-1940*, by J.Johnson, pg.262 for biography  
UNTITLED – LIVERPOOL STREET SCENE  
etching on paper  
10. x 7.75 in. | 25. x 20. cm. 1920  
inscribed in plate 'Published by The Gainsborough Galleries, Liverpool' signed lower right; unframed

**LOT OF 2** Estimate: 300/500



W. Sickert

Lot 297

**WALTER SICKERT**

R.A., R.E.  
[1860-1942] British  
see *Walter Sickert as Printmaker*, A.Troyen, Yale Center for British Art, 1979 for extensive biography and other examples, and *Dictionary of British Artists 1880-1940*, by J.Johnson, pg.459 and *British Etchers 1850-1940*, by K.Guichard, pg.58 for biography

**297 SUSSEX PLACE, REGENT'S PARK**

etching on paper  
7. x 8.5 in. | 18. x 22. cm. 1920  
signed and dated in plate  
Reference: catalogue #108 in *Walter Sickert as Printmaker*, by A.Troyen, New Haven – final state with inscription along bottom of plate 'Published by Ernest Brown & Phillips at Leicester Galleries'  
*illustrated* Estimate: 400/600



E. Lumsden

Lot 298

**ERNEST STEPHEN LUMSDEN**

R.E.  
[1883-1946] British  
see *Dictionary of British Artists 1880-1940*, by J.Johnson, pg.321 for biography and *Printmaking in British Columbia, 1889-1983*, by N.Tuele, for biography and another example; *British Etchers 1850-1940*, by K.Guichard, pg.48; husband of Mabel Royds

**298 JODHPUR, EVENING**

etching on paper  
7. x 10.75 in. | 18. x 27. cm. 1914  
signed, dated and titled in plate; signed and titled along bottom; edition: 50 signed proofs; unframed  
Reference: this print is from his second trip to Jodhpur, in *The Etching Revival 1826-1936*, from *The Collections of the Art Gallery of Victoria / No.8*, there was another print dated 1927  
*illustrated* Estimate: 400/600

**299 A SPANISH ROAD #10/50**

etching on paper  
10. x 11.75 in. | 25. x 30. cm. 1923  
signed and dated in plate lower right; signed and numbered along bottom; unframed  
Estimate: 400/600



E. Lumsden

Lot 304

**300 AWNINGS AND UMBRELLAS –**

**BENARES**  
etching on paper  
6. x 9.75 in. | 15. x 25. cm. 1914  
signed and dated in plate left edge; signed along bottom; edition: 50 signed proofs; unframed  
Reference: Benares, now called Varanasi, is in central India between Delhi and Calcutta on the Ganges River

Estimate: 400/600

**301 A MODERN BETHESDA #44/50**

etching on paper  
8.5 x 13.25 in. | 22. x 34. cm. 1923  
signed and dated in plate lower right; signed and numbered along bottom; unframed  
Estimate: 400/600

**302 THE ALCANTARA BRIDGE, TOLEDO**

etching on paper  
8.5 x 13.25 in. | 22. x 34. cm. 1923  
signed and dated in plate; signed and inscribed '3.50' along bottom; bears title below mat; unframed  
Estimate: 400/600

**303 A TOLEDO INN #9.50**

etching on paper  
11.75 x 6.25 in. | 30. x 16. cm. 1923  
signed and dated in plate; signed and numbered below image; titled on label verso; unframed  
Estimate: 400/600

**304 THE ENTHUSIAST**

etching on paper  
6. x 12. in. | 15. x 30. cm. 1932  
signed and dated in plate; signed and inscribed '1.50' along bottom; bears title below mat; unframed  
*illustrated* Estimate: 400/600

**BARBARA LEIGHTON**

A.S.A., C.P.E.  
[1911-1986] Canadian  
see lot #54 as well as *Printmaking in Alberta 1945-1985*, by B.Cochran, pg.100; and see *Images of the Land, Canadian Block Prints 1919-1945*, by P.Ainslie, for biography and other examples of the artist's work

**305 LOBBY 1 #1/2**

etching on paper  
10.75 x 9.5 in. | 27. x 24. cm.  
signed, titled and numbered below image; unframed  
Provenance: private collection, Southern Alberta

**TOGETHER WITH**

**LOBBY 4 #2/7**  
etching on paper  
11.75 x 8.75 in. | 30. x 22. cm.  
signed, titled and numbered below image; unframed  
Provenance: private collection, Southern Alberta  
**LOT OF 2** Estimate: 150/250



**AUGUST FREDERICK L. KENDERDINE**

[1870-1947] Canadian  
see *Augustus Kenderdine*, by M.Spain, Glenbow Museum, 1986 and *Gus Kenderdine 1870-1947, Pioneer*, by J.Climmer, Mendel Art Gallery; the Emma Lake workshop is held on land given by Kenderdine

**313 UNTITLED – EARLY SETTLERS**

oil on canvas  
16. x 28.25 in. | 41. x 72. cm.  
signed lower right  
*illustrated on cover* Estimate: 4,000/6,000

**ERNEST LINDNER**

C.P.E., F.C.A., R.C.A.  
[1897-1988] Canadian  
see *Lindner 1897 - , A Retrospective Exhibition*, by J.Climmer, Mendel Art Gallery, 1970

**314 UNTITLED – SASKATCHEWAN RIVER**

watercolour on paper  
15. x 22. in. | 38. x 56. cm. 1962  
signed and dated lower right; archival mat front and back

Reference: see *The Flat Side of the Landscape – The Emma Lake Artist's Workshops*, by J.O'Brian, pg.105 for another watercolour of the same date

Provenance: private collection, Saskatchewan  
*illustrated on cover* Estimate: 6,000/7,000

**315 FUNGI #72/100**

lithograph on paper  
16.5 x 22.75 in. | 42. x 58. cm. 1975  
signed, titled, dated and number along bottom; unframed

Provenance: private collection, Regina  
Estimate: 400/600

**316 BIRCHES #57/60**

lithograph on paper  
20.75 x 18.5 in. | 53. x 47. cm. 1975  
signed, titled, dated and number along bottom; unframed

Provenance: private collection, Regina  
Estimate: 400/600

**CHARLES JOHN COLLINGS**

[1848-1931] Canadian  
exhibition list in *Royal Canadian Academy of Arts 1880-1979*, by E.McMann, pg.78; biography in *Dictionary of Canadian Artists*, by C.MacDonald, Vol.1 pg.136; *Charles John Collings*, by I.Thom, Vancouver Art Gallery and Whyte Museum, 1990

**317 TORBAY – DEVON**

graphite on illustration board  
10. x 15. in. | 25. x 38. cm.  
signed with monogram lower left; titled upper left; inscribed 'Black Thorn in Flower, Strong Against Sea' verso; some scuffs

Provenance: private collection, Victoria  
Estimate: 250/350



A. Kenderdine

Lot 313

**(UNKNOWN) WESSELOW**

German

**318 SEEBE, FEB. '46**

oil on canvas board  
14.5 x 17.5 in. | 37. x 44. cm. 1946  
monogram and dated lower right; signed, titled and dated verso; some buckling in canvas; monogram was symbol for Canadian Military property

Reference: see *Behind Canadian Barbed Wire: Alien, Refugee and Prisoner of War Camps in Canada 1914-1946*, by D.Carter – Camp 103 was the first to open in Alberta Sept. 29, 1939 to Jan. 28, 1946-page 113 photo

Provenance: Gainsborough Art Studio, Calgary, label verso  
Estimate: 400/600

**ANDRE BIELER**

C.S.P.W.C., O.S.A., R.C.A.

[b.1896]

Canadian

see *Andre Bieler, An Artist's Life and Times*, by F.Smith, Merritt Publishing, 1980; and *Images of the Land, Canadian Block Prints 1919-1945*, by P.Ainslie, for biography and other examples of the artist's graphic work

**319 SKEENA FISHERMAN #42/50**

coloured woodblock on paper  
36.5 x 23.5 in. | 93. x 60. cm. 1982  
signed, titled, dated and numbered along bottom; unframed

Reference: smaller 1956 version illustrated in *Andre Bieler – An Artist's Life and Times*, by F.Smith, pg.124

Provenance: private collection, Vancouver  
Estimate: 400/600



E. Lindner

Lot 314



## JAMES (JIM) MCLAREN NICOLL

A.S.A.  
[1892-1986] Canadian  
biography in *Dictionary of Canadian Artists*, by  
C. MacDonald, Vol.5 pg.1382

### 320 BOW CRESCENT

watercolour on paper  
13.5 x 17.75 in. | 34. x 45. cm.  
signed lower right; signed and titled verso  
Reference: Bow Crescent is where Jim and  
Marion lived from 1945-1981  
*illustrated* Estimate: 700/900

### 321 CHURCH OF SAN LORENZO, CHAPPELLE MEDICI, FIRENZE, JUNE 27, 1959

ink on paper  
9.75 x 8. in. | 25. x 20. cm. 1959  
signed; titled, dated and inscribed verso;  
unframed  
Reference: The sketch comes from the Nicoll's  
1959 trip to Europe after Marion's studies with  
Will Barnet in New York; see *Marion Nicoll -  
Art and Influence*, by C. Jackson, pg.23,  
Glenbow Museum

Provenance: private collection, Calgary  
Estimate: 150/250

## MARION NICOLL

A.S.A., R.C.A.  
[1909-1985] Canadian  
see *Marion Nicoll, A Retrospective 1959-1979*, by  
The Edmonton Art Gallery, 1975; *Marion Nicoll -  
R.C.A.*, by B.Joyner, Masters Gallery, 1979;  
*Marion Nicoll, Art and Influences*, by C.Jackson,  
Glenbow Museum, 1986; and *Founders of the  
Alberta College of Art*, by V.Greenfield, pg.94 for  
biography

### 322 MODEL 'B'

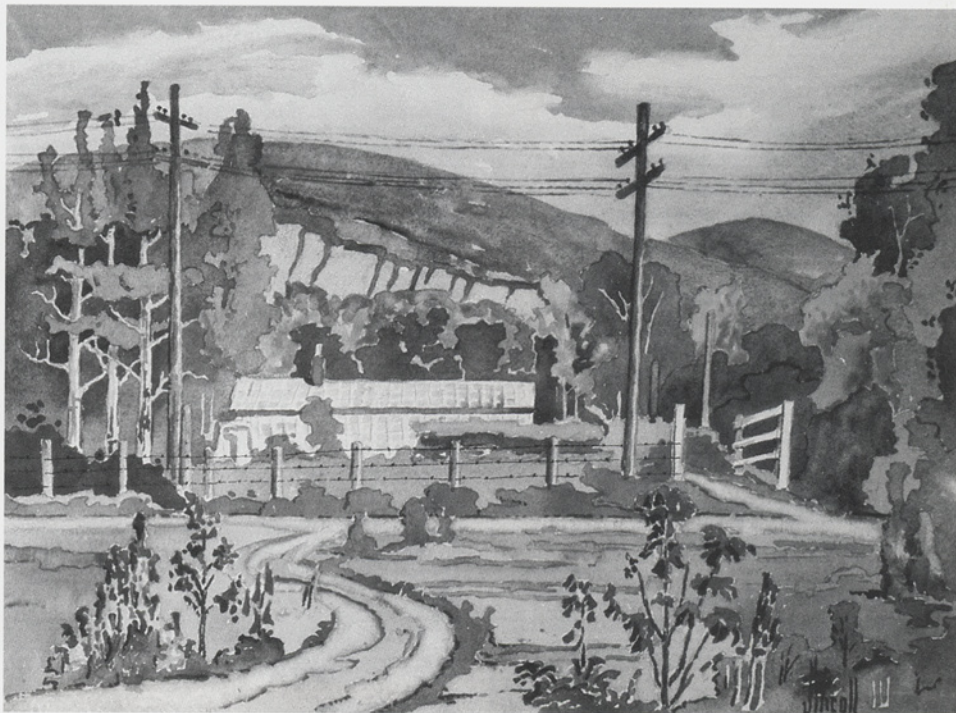
watercolour on paper  
13. x 10.5 in. | 33. x 27. cm. 1959  
signed and dated lower right; titled on label  
Provenance: purchased directly from the artist;  
private collection, Vancouver  
*illustrated in brochure* Estimate: 750/1,000

### 323 WAITING PROOF

cardboard relief print on paper  
17.25 x 20. in | 44. x 51. cm 1965  
signed, titled, dated, and numbered along  
bottom  
Reference: exhibited National Gallery of Canada  
Biennial, 1965, Edmonton Art Gallery  
Retrospective, 1975, and Glenbow Museum.,  
1986, catalogue #40 illustrated  
Estimate: 350/450

## HENDRIK BRES

A.S.A.  
[b.1932] Canadian  
see *Hendrik Bres*, by the Edmonton Art Gallery,  
1977 and *Spaces and Places*, by J.Ironside, pg.72  
for biography and another example of the artist's  
work in the collection of the Alberta Art  
Foundation



J. Nicoll

Lot 320

### 324 AUTUMN, NORTHWEST OF WARBURG

oil on board  
10. x 12. in. | 25. x 30. cm. 1980  
signed and dated lower right; signed, titled and  
dated verso  
Provenance: private collection, Edmonton  
Estimate: 350/450

### 325 SPRING AT THE EDGE OF THE CITY

oil on board  
10. x 12. in. | 25. x 30. cm. 1980  
signed and dated lower left; signed, titled and  
dated verso  
Provenance: private collection, Edmonton  
Estimate: 350/450

## GARRY NEWTON

[b.1939] Canadian  
biography in *Dictionary of Canadian Artists*, by  
C. MacDonald, Vol.5 pg.1370

### 326 HYMENOCALLIS LITTORALIS # 6/20

etching on paper  
17. x 17.75 in. | 43. x 45. cm.  
signed, titled and numbered along bottom;  
unframed  
Estimate: 250/350

## ALEX JANVIER

[b.1935] Canadian  
see *Founders of the Alberta College of Art*, by  
V.Greenfield, pg.86 for biography and another  
example of the artist's work pg.24

### 327 THE TWO NEVER MEET

watercolour on paper  
11. x 14.75 in. | 28. x 37. cm. 1971

signed and dated lower right; titled verso  
Reference: see *Visions - Contemporary Art in  
Canada*, ed. R.Keziere, pg.150 for an other  
example of the artist's work from this period  
in the collection of the Department of Indian  
and Northern Affairs, Ottawa  
Estimate: 500/700

## 328 LOT OF TWO BOOKS AND PRINT

### MAX BECKMANN

10. x 6.5 in. | 25. x 17. cm. 1931  
exhibition catalogue of show held at Galerie J.B.  
Neumann, New York and Gunther Francke,  
Munich  
Published by Artlovers Library, Vol.5, edited by  
J.B.Neumann and G.Franke, New  
York/Munich

## TOGETHER WITH

PAUL KLEE - HANDZEICHNUNGEN 1921 -  
1930  
11. x 9. in. | 28. x 23. cm.  
catalogue in German; 72 plates (plate 49 missing);  
folio format  
Published by Muller & Kiepenheuer

## TOGETHER WITH

(AFTER) ALEXEJ VON JAWLENSKY  
[1864-1941] German

### 324 UNTITLED - PORTRAIT #34/125

lithograph on paper  
21. x 19.5 in. | 53. x 50. cm.  
signed with stamped signature; numbered below  
image; unframed  
LOT OF 3 Estimate: 300/400



**WILLIAM LEWY LEROY STEVENSON**

A.S.A.  
[1905-1966] Canadian  
*W.L. Stevenson, 1926-1966*, exhibition curated by M. Joslin at the Edmonton Art Gallery opens Aug. 8, 1992; see *Founders of the Alberta College of Art*, by V. Greenfield, pg. 103 for biography and another example of the artist's work pg. 10

**329 UNTITLED – STILL LIFE WITH TOBY JUG**

oil on board  
20. x 25.5 in. | 51. x 65. cm.  
signed lower right; crack extreme right  
Provenance: private collection, Calgary  
*illustrated in brochure* Estimate: 2,000/2,500

**MAXWELL BENNETT BATES**

A.S.A., C.G.P., C.S.P.W.C., R.C.A.  
[1906-1980] Canadian  
see *Maxwell Bates, A Retrospective*, by I. Thom, Art Gallery of Greater Victoria; *Maxwell Bates: Landscapes 1948-1978*, by N. Townshend, Medicine Hat Art Gallery

**330 CARD PLAYERS**

oil on canvas  
20. x 16. in. | 51. x 41. cm. 1976  
signed and dated lower left; titled on stretcher  
Provenance: Arbutus Crafts, Victoria stamp on stretcher; private collection, Red Deer  
*illustrated on cover* Estimate: 3,500/4,500

**331 BEGGAR KING #2/30**

lithograph on paper  
15.75 x 11.75 in. | 40. x 30. cm. 1971  
signed, titled, dated and numbered along bottom; archival material throughout  
Reference: *illustrated in Maxwell Bates in Retrospect 1921-1971*, by Vancouver Art Gallery, pg. 29  
Provenance: Galerie Royale, Vancouver and Hett Gallery, Edmonton, labels verso; private collection, Red Deer  
Estimate: 600/800

**332 BEGGAR 3 #3/10 ARTIST'S PROOF**

lithograph on paper  
18. x 13.75 in. | 46. x 35. cm. 1962  
signed, titled, dated and numbered along bottom  
Reference: see *Printmaking in Alberta 1945-1985*, by B. Cochran, pg. 54 for biography and other examples of the artist's graphic work  
Provenance: Canadian Art Galleries, Calgary, label verso; private collection, Alberta  
Estimate: 600/800

**333 DANCERS #6/19**

lithograph on paper  
14.25 x 10.25 in. | 36. x 26. cm. 1955  
signed, titled, dated and numbered along bottom; slight stain lower right margin  
Reference: see *Images of the Land, Canadian Block Prints 1919-1945*, by P. Ainslie, for discussion of Bates' graphic work  
Provenance: Hett Gallery, Edmonton, label verso; private collection, Red Deer  
Estimate: 500/600



W.L. Stevenson

Lot 329



M. Bates

Lot 330





C. Gagnon

Lot 336

**ZOE MARY H. DUNNING**

A.S.A.  
[1877-1962]

Canadian

**334 BANFF GOLF COURSE**

watercolour on paper  
11.25 x 15.5 in. | 29. x 39. cm.  
signed lower left; titled verso; archival material  
throughout

Estimate: 350/450

**WILLIAM BRYMNER**

O.S.A., R.C.A.  
[1855-1925]

Canadian

see *William Brymer 1855-1925, A Retrospective*,  
by J.Braide, Agnes Etherington Art Centre, 1979;  
biography in *Dictionary of Canadian Artists*, by  
C.MacDonald, Vol.1 pg.100

**335 NEAR FIELD, B.C.**

watercolour on watercolour board  
10.5 x 7.5 in. | 27. x 19. cm.  
signed lower right; stamped verso 'Whatman's  
Board'; bears date c.1892-3 and inscription  
verso; bears title on old label verso; archival  
material throughout, with Denglas  
Reference: commissioned by the C.P.R.,  
William Brymner came to the west in 1892  
Provenance: Masters Gallery, Calgary, label  
verso

Estimate: 750/1,000

**CLARENCE A. GAGNON**

R.C.A.  
[1881-1942]

Canadian

biography in *Dictionary of Canadian Artists*, by  
C.MacDonald, Vol.2 pg.244

**336 L'EMBOU CHURE DU RHIN -  
HOLLANDE, 1929**

oil on panel  
6.25 x 9. in. | 16. x 23. cm. 1929

signed with thumb print verso; certificate by  
Lucile Rodier Gagnon #2 verso  
Provenance: included in the estate of the artist's  
studio; private collection, Calgary  
*illustrated on cover* Estimate: 7,000/9,000

**337 UNTITLED - ICEBERG**

monotype highlighted with gouache on paper  
5.75 x 4.75 in. | 15. x 12. cm.

Atelier Gagnon stamp lower right; archival  
material throughout with Denglas

Reference: see *The Prints of Clarence Gagnon*,  
by Ian Thom, Art Gallery of Greater Victoria,  
for Gagnon's etchings and drypoints but does  
not include monotypes in the catalogue  
Provenance: deVooght Galleries, Vancouver,  
label verso

Estimate: 600/800

**JOANNE SIMPSON WILSON**

[b.1896] Canadian  
listed in *British Columbia Women Artists 1885-  
1985*, by N.Tuele, Art Gallery of Greater  
Victoria, 1985

**338 ALERT BAY**

watercolour on paper  
10.75 x 9.25 in. | 27. x 23. cm circa 1920  
signed with initials lower right; archival  
material front and back, with Denglas  
Provenance: Petley Jones Gallery, Vancouver,  
label verso

Estimate: 800/1,000

**FREDERICK ARTHUR VERNER**

O.S.A., A.R.C.A.  
[1836-1928] Canadian  
see *Early Painters and Engravers in Canada*, by  
R.Harper, pg.316 for biography and *The Last  
Buffalo*, by J.Murray, Pagurian Press, 1984

**339 UNTITLED - FOREST VIEW**

watercolour on paper  
14. x 10. in. | 36. x 25. cm. 1912  
signed and dated lower right  
Provenance: Matthews Picture Frame Moulding  
label verso  
*illustrated in brochure* Estimate: 2,500/3,500



**GRACE WILSON MELVIN**

[1892-1977] Canadian  
artist included in *British Columbia Women Artists 1885-1985*, by N.Tuele, Art Gallery of Greater Victoria, 1985; biography in *Dictionary of Canadian Artists*, by C.MacDonald, Vol.4 pg.1181; and *Vancouver: Art and Artists 1931-1983*, by the Vancouver Art Gallery, pg.417, sister-in-law of Charles H. Scott

**340 UNTITLED – WEST COAST INDIAN PORTRAIT**

oil on board  
30. x 24. in. | 76. x 61. cm.  
signed lower right  
*illustrated* Estimate: 500/700

**ALLEN BENNETT**

fl.1980 American

**341 UNTITLED**

silkscreen on paper  
16.25 x 22.5 in. | 41. x 57. cm.  
signed in block lower right; signed and titled along bottom  
Provenance: private collection, Calgary  
Estimate: 200/300

**TRISTAN WALCOT**

[b.1935] British  
The artist's real name is Terrance Walton, but has painted under this name most of his life. Well known for his bird paintings, his work has been used for postage-stamps by Papua/New Guinea.

**342 PHEASANTS IN SNOW**

watercolour and gouache on illustration board  
20. x 28.5 in. | 51. x 72. cm. circa 1967  
signed lower right  
Provenance: Mid-West Picture Frame, Calgary stamp and Kensington Fine Art Gallery, Calgary, label verso; private collection, Calgary  
*illustrated* Estimate: 400/600

**343 UNTITLED – PHEASANT**

watercolour and gouache on illustration board  
17.75 x 21.25 in. | 45. x 54. cm.  
signed lower right  
Provenance: private collection, Calgary  
Estimate: 300/500

**ROLAND ROLLINMUD**

[fl.1985] Canadian

**344 FAMILY GEESE #61/100**

photolithographic reproduction on paper  
12. x 17.75 in. | 30. x 45. cm. 1985  
signed and dated in plate; signed, titled and numbered along bottom  
Provenance: private collection, Calgary  
Estimate: 150/250



G. Melvin Lot 340

**VICTOR SANTOS**

[b.1939] Canadian

**345 UNTITLED – STILL LIFE**

oil on canvas  
9. x 12. in. | 23. x 30. cm. 1970  
signed lower right;  
Provenance: private collection, Calgary  
Estimate: 400/600

**WAYNE OLSON**

[fl.1978] Canadian

**346 TRISTRAM**

oil on canvas  
40. x 40. in. | 102. x 102. cm. 1978  
signed lower right; signed, titled and dated on stretcher verso; unframed  
Provenance: private collection, Calgary  
Estimate: 600/800



T. Walcot Lot 342

**WILLIAM PARSONS**

[1909-1982] Canadian  
biography in *Dictionary of Canadian Artists*, by C.MacDonald, Vol.5 pg.1511

**347 OLD LOG CABIN**

oil on board  
16. x 20. in. | 41. x 51. cm.  
signed lower right; signed and titled verso  
Provenance: private collection, Calgary  
Estimate: 350/450

**348 BIG HAWK LAKE**

oil on board  
12. x 8. in. | 30. x 20. cm.  
signed lower right; signed and titled verso  
Provenance: private collection, Calgary  
Estimate: 150/250

**JIM W. WISPINSKI**

[b.1942] Canadian

**349 MEMORIES #3/7**

lithograph on paper  
7.5 x 11. in. | 19. x 28. cm. 1974  
signed, titled, dated and numbered along bottom  
Provenance: Gainsborough Galleries, Calgary, label verso; private collection, Calgary  
Estimate: 100/150

**CARL M. SCHULTHEISS**

[20th century] American

**350 REST ON THE FLIGHT INTO EGYPT**

etching on paper  
6.25 x 8.25 in. | 16. x 21. cm.  
signed with initials in plate; signed below image; unframed  
Provenance: stamped inside mat Kelleher Galleries, New York

**TOGETHER WITH**

**HELEN WEST HELLER**

[1872-1955] American

**JUNGLE #15**

linoblock on paper  
5. x 3.75 in. | 13. x 10. cm. 1930  
signed, titled, dated and numbered below image; under mat inscribed 'Left panel of trptych'  
unframed

**LOT OF 2** Estimate: 200/300

**THANK YOU FOR ATTENDING.**



# NOTES



# ABSENTEE BID FORM

LEVIS Fine Art & Appraisals  
A Division of Artbank Incorporated  
#128 1711 10 Avenue S.W.  
Calgary, Alberta, T3C 0K1  
Tel: (403) 541-9099  
Fax: (403) 541-9097  
Fax available until 12 noon DAY OF SALE

**SALE DATE:** Monday, January 20th and Tuesday, January 21st, 1992

I wish to place the following bid[s] with LEVIS Fine Art for their sale. I agree the LEVIS Fine Art will, to the best of their ability, attempt to purchase for me the following lots up to the maximum amount specified below or where indicated plus one bid.

**NOTE TO ABSENTEE BIDDERS:** All bids are accepted subject to the 'Standard Conditions of Sale' printed on the inside cover of the catalogue. The amount listed is for hammer price (buyer's premium of 10% and G.S.T. of 7% are in addition to the amounts listed below).

Lot Number	Artist/Item	Top Hammer Price	Plus one bid
_____	_____	_____	_____
_____	_____	_____	_____
_____	_____	_____	_____
_____	_____	_____	_____
_____	_____	_____	_____
_____	_____	_____	_____
_____	_____	_____	_____
_____	_____	_____	_____
_____	_____	_____	_____
_____	_____	_____	_____
_____	_____	_____	_____
_____	_____	_____	_____
_____	_____	_____	_____
_____	_____	_____	_____
_____	_____	_____	_____
_____	_____	_____	_____
_____	_____	_____	_____
_____	_____	_____	_____
_____	_____	_____	_____
_____	_____	_____	_____
_____	_____	_____	_____
_____	_____	_____	_____
_____	_____	_____	_____

Payment may be made by cash, certified cheque, MasterCard, Visa, or bank draft. Payment must be made in full the day of the auction

Name: \_\_\_\_\_ Date: \_\_\_\_\_

Address: \_\_\_\_\_ Telephone Res: \_\_\_\_\_

City: \_\_\_\_\_ Bus: \_\_\_\_\_

Postal Code: \_\_\_\_\_ Fax: \_\_\_\_\_

Bank Reference:  
 MasterCard Account No. \_\_\_\_\_ Expiry Date: \_\_\_\_\_

Visa Account No. \_\_\_\_\_ Expiry Date: \_\_\_\_\_

I have read your conditions of sale and I am bidding in accordance with them

Signature: \_\_\_\_\_



# BIBLIOGRAPHY

- Agnes Etherington Art Centre – Permanent Collection*, by Frances Smith, published by the Agnes Etherington Art Centre, Queen's University, Kingston, 1968
- The A.S.A. Index 1948-1980*, by Jan Roseneder, published by the University of Calgary Libraries, Calgary, 1982
- A Measure of Success – Graduates of the Alberta College of Art 1963-1984*, by Valerie Greenfield, published by the Alberta College of Art, Calgary, 1985
- Aquarelle – A History of the Canadian Society of Painters in Water Colour 1925-1985*, by Rebecca Sisler, published by the Canadian Society of Painters in Water Colour, Toronto, 1986
- Art Gallery of Hamilton Handbook*, by T.R. MacDonald, published by the Art Gallery of Hamilton, Hamilton, 1964
- Art Gallery of Ontario – the Canadian Collection*, published by the Art Gallery of Ontario, Toronto, 1967
- ARTBANK: A Database of the Visual Arts in Canada*, compiled by Doug Levis, published by Artbank Incorporated, Calgary, 1991
- Artists, Builders and Dreamers – 50 Years at the Banff School*, by David and Peggy Leighton, published by McClelland and Stewart, Toronto, 1982
- Art Price Annual – ADEC 90 and ADEC 91*, by Eric Michel, published by ADEC Production, Paris, 1990, 1991
- Artists in Canada – a Union List of Artists' Files*, by Susan Hasbury, published by the National Gallery of Canada Library, Ottawa, 1988
- British Columbia Women Artists, 1885-1985*, by Nicholas Tuele, published by the Art Gallery of Greater Victoria, Victoria, 1985
- British Etchers 1850-1940*, by Kenneth M. Guichard, published by Robin Garton, London, 1981
- British Prints, Dictionary and Price Guide* by Ian Mackenzie, published by the Antique Collectors' Club, London, 1987
- Canadian Art Sales Index – Vol. 1 thru 11*, by Anthony Westbridge, published by Westbridge Publications Ltd., Vancouver, 1977 thru 1991
- Catalogue of the National Gallery of Canada, Ottawa – Canadian Art – Volume One / A-F*, by Charles Hill and Pierre Landry, published by the National Gallery of Canada, Ottawa, 1988
- A Concise History of Canadian Painting*, by Dennis Reid, published by Oxford University Press, Toronto, 1973
- Contemporary Canadian Art*, by David Burnett and Marilyn Shiff, published by Hurtig Publishers, Edmonton, 1983
- Dictionary of British Art, Volume V, British Artists, 1880-1990*, by Jane Johnson and A. Greutner, published by the Antique Collectors' Club, Ltd., London, 1980
- A Dictionary of Canadian Artists – Vol. 1 thru 7*, by Colin MacDonald, published by Canadian Paperbacks Publishing Ltd., Ottawa, 1967 thru 1990
- Early Painters and Engravers in Canada*, by J. Russell Harper, published by the University of Toronto Press, Toronto, 1970
- The Flat Side of Landscape – the Emma Lake Artists' Workshops*, by John O'Brian, Ann Morrison, David Howard, Matthew Teitelbaum and Terry Atkinson, published by the Mendel Art Gallery, Saskatoon, 1989
- Founders of the Alberta College of Art*, by Valerie Greenfield, published by the Alberta College of Art, Calgary, 1986
- Gordon's Print Price Annual, 1990*, by Albert Wehner, published by Martin Gordon Inc., Naples, Florida, 1990
- History of Wood Engraving*, by Albert Garrett, published by Bloomsbury Books, London, 1978
- Inuit – see
- Biographies of Inuit Artists*, published by Canadian Arctic Producers – a Division of Arctic Co-operatives Limited, Ottawa, 1984
- Inuit Artist Index Arranged by Last Name*, published by Indian and Northern Affairs Canada, Ottawa, January 1990
- Images of the Land: Canadian Block Prints 1919-1945*, by Patricia Ainslie, published by the Glenbow Museum, Calgary, 1984
- Landmarks of Canadian Art*, by Peter Mellen, published by McClelland and Stewart, Toronto, 1978
- The Mendel Art Gallery – Twenty-Five Years of Collecting*, by Matthew Teitelbaum, published by the Mendel Art Gallery, Saskatoon, 1989
- The Mountains and the Sky*, by Lorne Render, published by the Glenbow-Alberta Institute, Calgary, 1974
- The National Gallery of Canada Catalogue of Paintings and Sculpture – Volume II: Modern European Schools*, by R.H. Hubbard, published by the University of Toronto Press, Toronto, 1959
- The National Gallery of Canada Catalogue of Paintings and Sculpture – Volume III: Canadian School*, by R.H. Hubbard, published by the University of Toronto Press, Toronto, 1960
- Painting in Alberta – An Historical Survey*, by Karen Wilkin, published by the Edmonton Art Gallery, Edmonton, 1980
- Painting in Canada: a History*, by J. Russell Harper, published by the University of Toronto Press, Toronto, 1966
- Printmaking in Alberta 1945-1985*, by Bente Roed Cochran, published by the University of Alberta Press, Edmonton, 1989
- The Printworld Directory – Contemporary Prints and Prices*, fourth edition, by Selma Smith, published by Printworld Inc., Bala Cynwyd, Pennsylvania, 1988
- Royal Canada Academy of Arts – R.C.A. – see
- Passionate Spirits – A History of the Royal Canadian Academy of Arts, 1880-1980*, by Rebecca Sisler, published by Clarke, Irwin and Company, Toronto, 1980
- Royal Canadian Academy of Arts, Exhibitions and Members 1880-1979*, by Evelyn de R. McMann, published by the University of Toronto Press, Toronto, 1981
- Selected View – The Longstaffe Collection 1959-1984*, by Lorna Farrell-Ward, published by the Vancouver Art Gallery, 1984
- Spaces and Places – Eight Decades of Landscape Painting in Alberta*, by Jetske Ironside, published by the Alberta Art Foundation, Edmonton, 1986
- University of Saskatchewan, Permanent Art Collection, 1980*, by Lynne Bell, published by the University of Saskatchewan, Saskatoon, 1980
- Vancouver – Art and Artists 1931-1983*, published by the Vancouver Art Gallery, Vancouver, 1983
- Visions – Contemporary Art in Canada*, by Robert Bringham, Geoffrey James, Russell Keziere and Doris Shadbolt, published by Douglas and McIntyre, Vancouver, 1983
- Western Untitled*, by Terrence Heath, published by the Glenbow-Alberta Institute, Calgary, 1976
- Winnipeg Art Gallery 1912-1962*, published by the Winnipeg Art Gallery, Winnipeg, 1962
- Winnipeg West – Painting in Western Canada 1945-1970*, by Christopher Varley, published by the Edmonton Art Gallery, Edmonton, 1983



# INDEX

Allison; Tony	257	Houston; James Archibald	38-39	Plaskett; Joseph	147
Andrews; Sybil	224-228	Hubbard; Eric Heskreth	75	Poirier; Narcisse	148-149
Appel; Karl	122	Huggill; Henry Percy	296	Power; Cyril Edward	222
Barleigh; Alfred C. & Barbara Leighton	54-61	Hunt; Tony	87-88	Pragnell; Bartley Robilliard	201-203
Bates; Maxwell Bennett	330-333	Hurley; Robert Newton	251-252		
Bennett; Allen	341			Qumaluk; Leah	34
Bergman; Henry Eric	204-205	Indiana; Robert	121	Rebry; Gaston	145
Besant; Derek	28	Inuit; Various	30-37	Rembrandt; - Harmensz Van Ryn	130
Bieler; Andre	319	Jackson; Alexander Young	101-103	Renison; William	287
Blackwood; David Lloyd	245-246	Janvier; Alex	327	Roberts; William Goodridge	104
Bondaroff; Carole	210	Jarvis; Georgia	100	Robins; William Palmer	291-292
Book; various	7-11, 328	Jawlensky; (AFTER) Alexej von	328	Robinson; Clifford Fearnd	19-25
Borein; Edward	91-92			Rollinmud; Roland	344
Brangwynn; Frank	223	Kaufman; John	272-273	Royds; Mabel A.	67-68
Bres; Hendrik	324-325	Kenderdine; August Frederick L.	313	Rushbury; Henry	294-295
Brockhurst; Gerald Leslie	289	Kerr; Illingworth Holey	263-269	Russell; John Wentworth	83
Brooks; Frank Leonard	261-262	Knowles; Dorothy	253-254		
Brown; Norman	47	Kurelek; William	132	Santos; Victor	345
Brymner; William	335			Sapp; Allen	85
		Law; Charles Anthony Francis	48	Sawai; Noboru	26
Cardinal-Schubert; Joane	258	Leighton; Clare Veronica Hope	62-66	School; 19th century Canadian	76-82
Chadwick; Robert Lee	43	Leighton; Barbara	305	Schultheiss; Carl M.	350
Champagne; Horace	142-143	Leighton; Alfred Crocker	306-309	Scott; Don	45-46
Charles; Henry J.	94	Lidstone; Arthur	44	Semmens; Harold Nelson	244
Chubb; Brian	270-271	Lindner; Ernest	314-316	Sevier; Gerald	150
Collier; Alan Caswell	51-53	Loranger; Georges	89	Shannon; Charles Hazelwood	293
Collings; Charles John	317	Lord; Elyse	215	Shelton; Margaret	206-209
Cowin; Jack L.	248-249	Lumsden; Ernest Stephen	298-304	Sickert; Walter	297
Crockford; Duncan MacKinnon	97			Signore; Littorio Del	146
		MacDonald; Murray William	312	Simpson; Unknown	288
Daglish; Eric Fitch	218-221	Malet; Guy Seymour Warre	280	Sinclair; Deborah Lougheed	138
DeWolfe; E.	86	Martin; Thomas Mower	129	Slater; Eric	74
Dodd; Francis	284	Maxwell; Tom	287	Snell; James Herbert	131
Dominguez; Oscar	117	Maynard; Max	107	Snow; John	211-212
Dunning; Zoe Mary H.	334	McInnis; Robert F.M.	49-50	Staples; Owen P.	128
Dyer; Marilyn	27	Melvin; Grace Wilson	340	Stevenson; William Lewy Leroy	329
		Mitchell; Janet	134-136	Stewart; Hilda	105-106
Echalook; Noah	36-37	Moore; Henry	124		
Enns; Maureen	108-110	Morrisseau; Norval	259	Tamayo; Rufino	125
Esler; John Kenneth	27	Mulcaster; Wynona Croft	250	Taylor; Frederick B.	5-6
Etidlui; Kingmeata	33	Murray; Bruce	29	Thornton; Mildred Valley	84
				Tobey; Mark	123
Fafard; Joseph	113-115	Nanogak; Agnes	30	Town; Harold Barling	260
Fairclough; Wilfred R.E.	296	Nevelson; Louise	120	Turner; John Davenall	133
Foster; Velma	247	Newton; Garry	326		
Fracchetti; Lorenzo	40-41	Nicholson; William	274	Underwood; Leon	275-279
Frache; Don	90	Nicoll; James (Jim) McLaren	320-321		
Freeman; Richard	98	Nicoll; Marion	322-323	Verner; Frederick	339
				Voll; Ulrike	118
Gagnon; Clarence A.	336-337	Ohaituk; Jobie	31	Walcot; William	127
Gaskell; George Percival	282-283	Olson; Wayne	346	Walcot; Tristan	342-343
Genn; Robert	95-96	Osborne; Malcolm	285-286	Watson; Shirley	137
Gethin; Percy Francis	126			Wessellow; (Unknown)	318
Gibbings; Robert	12-17	Papialuk; Josie (Paperk)	35	Whydale; Ernest Herbert	69-73
Gillett; Edward Frank	290	Parker; Harley Walter Blait	18	Wilson; Joanne Simpson	338
Glyde; Henry George	310-311	Parsons; William	347-349	Winter; William	1-4
Godwin; Ted	112	Perehudoff; William	111	Wispinski; Jim W.	349
Goldsmith; Sidney Charles Joseph	144	Perehudoff; Catherine	255	Wood; Karl	139
		Phelps; Stan	210	Wunderlich; Paul	119
Harrison; Josephine	216-217	Phillips; Walter Joseph	229-243		
Hartrick; Archibald Standish	281	Pigott; Marjorie	140-141	Zwicker; Mary Marguerite Porter	42
Heller; Helen West	350	Piper; John	116		
Holmes; Keith	256	Pissarro; Orovida	213-214		
Holroyd; Sir Charles	126	Plangg; Werner	93		



# GUIDE FOR CLIENTS

## BUYER'S PREMIUM

A premium of 10% will be added to the Hammer Price of all Property sold. This premium is payable by all purchasers.

## GOODS AND SERVICES TAX

G.S.T. of 7% will be charged on the total of the Hammer Price and on the Buyer's Premium.

## RESERVES

A reserve is the confidential minimum selling price agreed upon between the seller and the auction house. We will not accept a reserve price that would exceed the printed estimate. As agents for the consignor, we may place bids during the auction if the current bid is below the reserve on the lot being offered.

## ESTIMATES

As a service to our clients, we provide an estimate which, in our opinion, the lot offered may sell for based upon previous auctions results by the artist or something similar. These are only estimates and are not appraised values. In addition, estimates are worked on well in advance of the publication of the catalogue. Please contact the office on any particular lot. In the case of a lot with a reserve price, we do not allow the reserve to exceed the printed estimate.

## REGISTRATION

You should arrive before the auction to register for the auction. You will receive a card to fill out with a number printed on it, your bidder number. Please ensure that you have established credit references before the auction.

## BIDDING

If you are successful on a particular lot, you will be requested to show your bidder number.

## ABSENTEE BIDS

If you are unable to attend the auction, you may use the enclosed Absentee Bid form at the end of the auction catalogue. We will act on your behalf in trying to purchase the lot(s) of your choice for the lowest possible price, up to the top amount you indicate.

## PAYMENT

Payment may be made by cash, certified cheque, MasterCard, Visa, or bank draft. Payment must be made in full the day of the auction.

## REMOVAL OF PROPERTY

Once payment has been made in full, you may pick up your art work. Art work left with the auction company are left at the purchasers risk and peril.

## INFORMATION FOR CONSIGNORS

We are always looking for good art work to sell at auctions. If you have something you think may interest us, please give us a call at our office for a free confidential appointment.

Standard commission rates for lots sold are as follows:  
10% for lots selling for \$1,000 or more  
15% for lots selling under \$1,000

If there is a reserve price and the lot fails to sell, there is a reserve bid fee of 5% of the reserve price (with a minimum charge of \$50).

While the consignor is responsible for the reserve fee and shipping to and from the auction, the auction company is responsible for the following:

- advertising
- cataloguing and/or photography expenses
- insurance

## INFORMATION ON APPRAISALS

Written appraisals can be prepared for insurance, probate, family division or other purposes. Appraisal fees vary according to circumstance so please contact the office regarding particulars. A partial rebate of our fee will be made on appraised property subsequently accepted by us for sale.

## CATALOGUE SUBSCRIPTIONS

Catalogue subscribers receive the highest priority and automatically receive auction results after the auction. Subscriptions are available for one or two year periods. Please contact the office for more information.

Photography by COLOURWORKS

Printing by PAPERWORKS

Auction services by:

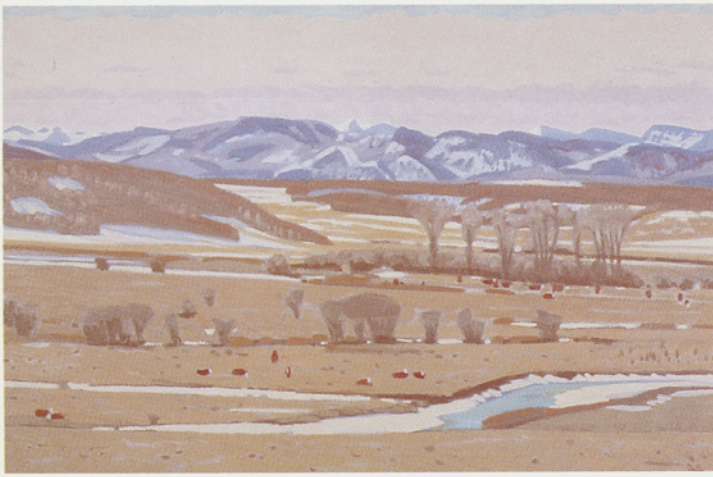
Cherry Hill Auctions of Canada

#7 7667 Gaetz Avenue

Red Deer, Alberta T4P 1M6

Tel: 342-2514





Illingworth Kerr

Lot 263



Ernest Lindner

Lot 314



Maxwell Bates

Lot 330



Bart Pragnell

Lot 202



August Kenderdine

Lot 313



Walter J. Phillips

Lot 229